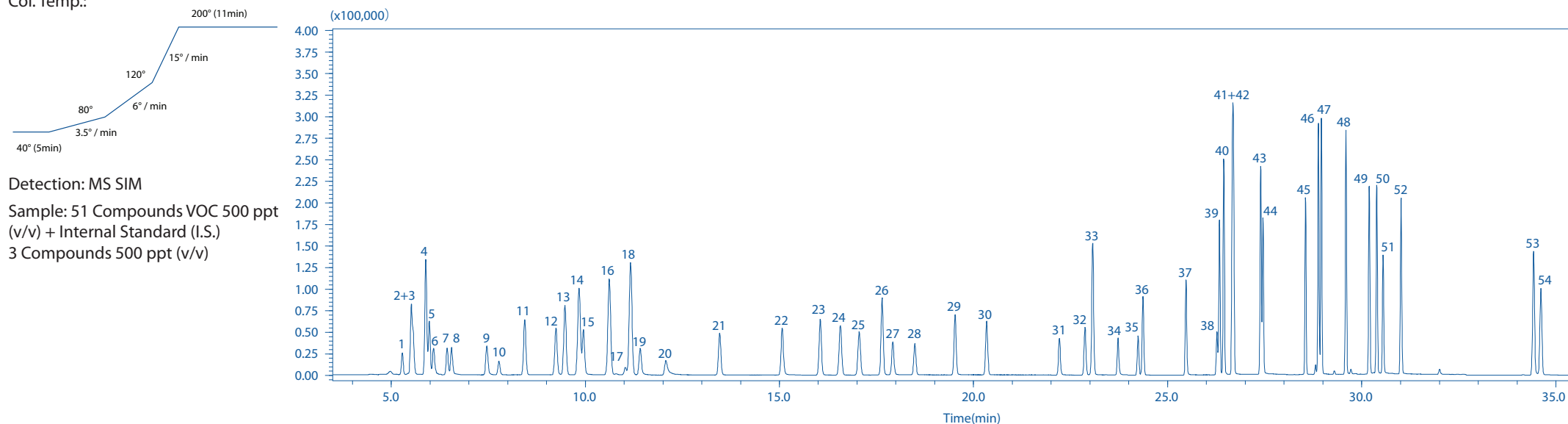


Detection of VOC

Column: UptiBond 624 Premium (60m x 0.25mm x 1.4µm)

Col. Temp.:



No.		No.		No.		No.	
1.	HFC-134a	14.	CFC-113	27.	1,2-Dichloroethane	40.	Ethylbenzene
2.	CFC-12	15.	1,1-Dichloroethylene	28.	Fluorobenzene(I.S.)	41+42.	m, p-Xylene
3.	HCFC-22	16.	HCFC-225ca	29.	Trichloroethylene	43.	o-Xylene
4.	CFC-114	17.	3-Chloro-1-propene	30.	1,2-Dichloropropane	44.	Styrene
5.	HCFC-142b	18.	HCFC-225cb	31.	cis-1,3-Dichloropropene	45.	1,1,2,2-Tetrachloroethane
6.	Chloromethane	19.	Dichloromethane	32.	Toluene-d8(I.S.)	46.	4-Ethyltoluene
7.	Vinyl chloride	20.	Acrylonitrile	33.	Toluene	47.	1,3,5-Trimethylbenzene
8.	1,3-Butadiene	21.	1,1-Dichloroethane	34.	trans-1,3-Dichloropropene	48.	1,2,4-Trimethylbenzene
9.	Bromomethane	22.	cis-1,2-Dichloroethylene	35.	1,1,2-Trichloroethane	49.	1,3-Dichlorobenzene
10.	Ethyl chloride	23.	Chloroform	36.	Tetrachloroethylene	50.	1,4-Dichlorobenzene
11.	CFC-11	24.	1,1,1-Trichloroethane	37.	1,2-Dibromoethane	51.	Benzylchloride
12.	Dichlorofluoroethane	25.	Tetrachloromethane	38.	Chlorobenzene-d5(I.S.)	52.	1,2-Dichlorobenzene
13.	HCFC-123	26.	Benzene	39.	Monochlorobenzene	53.	1,2,4-Trichlorobenzene
						54.	Hexachloro-1,3-butadiene