

Primary Antibodies & Ags

Alphabetical Listing

Name	Host - Isotype	Clone	Species Reactivity				Application						Size	Cat.#	Research Area
			Hu	Ms	Rt	Other	WB	IHC	EL	FC	IP	Other			
EV11, see PRDM3															
Exchange inhibitory peptide	Rb	Pab	(+)	(+)	+	(Rb,Fr)	+	+					100 µg	E71310	19
Exchange repair cross compementing	Ms IgG2b	Mab	+				+	+					100 µg	C75830	10
Excitatory Amino Acid Transporter 2	Ms IgG2a	1H8	+					+					500 µl	V03120	20
Exo1	Ms IgG1	266	+	+			+						500 µl	S39570	10
Exodus-2	Rb	Pab	+				+	+			Neut		50 µg	AR4620	9
Exodus-2	Rb	Pab		+			+	+			Neut		50 µg	AR5790	9
Exodus-2	Rb	Pab	+				+	+			Neut		100 µg	O12280	9
Exodus-2	Rb	Pab		+			+	+			Neut		100 µg	O12290	9
Exodus-2 -Biotin	Rb	Pab	+				+	+					25 µg	AR2710	9
Exodus-2 -Biotin	Rb	Pab		+			+	+					25 µg	AR2720	9
EZH1, middle region	Rb	Pab	+					+	+				100 µg	GK9360	10-21
EZH1, N-term	Rb	Pab	+					+	+				100 µg	GK9370	10-21
EZH2, middle region	Rb	Pab	+					+	+	+			100 µg	GK9390	10-21
EZH2, N-term	Rb	Pab	+					+	+	+			100 µg	GK9380	10-21
Ezrin / p81 / 80K / Cytovillin	Ms IgG1	3C12	+	+	+	Bv,Ko+	+	+			+		500 µl	968251	20-22
F															
FACL3, middle region	Rb	Pab	+					+	+				100 µg	GK9680	21
FACL3, N-term	Rb	Pab	+					+	+				100 µg	GK9670	21
FACL4, middle region	Rb	Pab	+					+	+				100 µg	GK9700	21
FACL5, N-term	Rb	Pab	+					+	+				100 µg	GK9690	21
FACL6, middle region	Rb	Pab	+	+				+	+	+			100 µg	GK9720	21
FACL6, N-term	Rb	Pab	+					+	+	+			100 µg	GK9710	21
Factor H, beta 1H	Sh	Pab	+									RID,DD+ 1 ml	N89850	4	
Factor D, see AdipsinS															
Factor IX	Ms IgG1	M5020722	+										100 µg	P44260	4
Factor IX	Gt	Pab	+					+					1 mg	O25160	4
Factor IX	Ms IgG1	9D	+					+	+				500 µg	N90970	4
Factor V	Ms IgG1	M5020721	+										100 µg	P44270	4
Factor V	Hrs	Pab	+					+	+				1 mg	O24790	4
Factor V, Activation Peptide	Ms IgG1	702	+					+	+				250 µg	O20250	4
Factor V, Light Chain	Ms IgG1	701	+					+	+				250 µg	O20260	4
Factor VII	Sh	Pab	+					+	+				1 mg	O26190	4
Factor VIII	Sh	Pab	+					+	+				1 ml	898640	4
Factor VIII	Ms IgG2a	104	+					+	+				1 ml	O11180	4
Factor VIII	Ms IgG2a	104	+						+				1 mg	GG1570	4
Factor VIII	Ms IgG1	8A	+						+				500 µg	N92190	4
Factor VIII C	Sh	Pab	+						+				1 mg	O26200	4
Factor VIII Related Antigen	Sh	Pab										DD+	1 ml	N89220	2-4
Factor VIII Related Antigen	Gt	Pab	+					+	+			IEP	1 mg	N88100	2-4
Factor VIII Related Antigen	Ms IgG1	4F9	+					+		+			200 µg	O18590	2-4
Factor VIII Related Antigen	Ms IgG1	102	+										1 ml	O11190	2-4
Factor VIII Related Antigen	Ms IgG1	101	+							+			1 mg	GG1590	2-4
Factor VIII Related Antigen	Ms IgG1	101	+							+			1 ml	O11200	2-4
Factor VIII Related Antigen	Ms IgG1	102	+							+			1 mg	GG1600	2-4
Factor VIII Related Antigen	Gt	Pab	+									IEP,DD	0.5 ml	AL1190	2-4
Factor VIII Related Antigen	Ms IgG1	F8/86	+					+				IF	500 µl	V10310	2-4
Factor VIII Related Antigen	Rb	Pab	+					+					500 µl	N71250	2-4
Factor VIII Related Antigen	Rb	Pab	+					+					500 µl	N71273	2-4
Factor VIII Related Antigen -FITC	Sh	Pab										IF	1 ml	N89230	2-4
Factor VIII, A2 domain	Ms IgG	012	+					+	+				500 µg	GG1580	4
Factor VIII	Ms IgG1	M2110133	+										1 mg	P44280	4
Factor VIII C	Ms IgG2a	M28259	+										1 mg	P44290	4
Factor X	Gt	Pab	+							+			1 mg	O26540	4

Species legend : Bd : Bird, Bv : Bovine, Ck : Chicken or Hen, Ct : Feline, Dg : Canine, Dr : Drosophila, Eq : Equine, F : Fish, Fr : Frog, Ft : Ferret, GP : Guinea Pig, Gt : Goat, Hm : Hamster, Hrs : Horse, Hu : Human, Ko : Kangaroo, M : Mammalian, Mi : Mink, Mk : Monkey, Ms : Mouse, Ne : Nematode, Op : Opossum, Pl : plant, Ql : Quail, Rb : Rabbit, Rt : Rat, Sh : Sheep, Sw : Porcine, Sy Hm : Syrian Hamster, Xe : Xenopus, Ye : Yeast

Size : Size indicated in bold means several sizes and formats are available (sample size or bigger size, unpurified neat serum, without azide or BSA, positive control...) : contact us for more detail

Application legend : Bk : Blocking, CD : Cell detection, Ch : ChIP, COA : ELISA capture, Db : Dot Blot, DD : Double diffusion, EL : ELISA detection, EM : Electron Microscopy, FCM : Flow Cytometry, FIA : FluoroImmunoAssay, GS : Gel (super)shift, HA : Hemagglutination/Latex agglutination, ICC : ImmunoCytoChemistry, IEP : Immunoelectrophoresis, IF : Immunofluorescence, IHC : ImmunoHistoChemistry, IP : Immunoprecipitation/Immunopurification, ISH : In Situ Hybridization, KA : Kinase assay, LF : Lateral flow, Neph : Nephelometry, Neut : Neutralizing, RIA : RadiolImmunoassay, RID : Radial Immunodiffusion, SB : Southern Blot, TIA : Turbidimetry

Name : Prefixes as 'alpha', 'D1-', 'Pro-',... are not considered for the alphanumerical sorting, and often included after the main name.

(+) : Expected species cross-reactivities based on immunogen sequence homology _ Expected application suitability.

Primary Antibodies & Ags

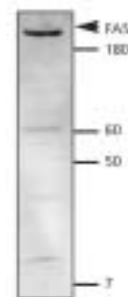
Alphabetical Listing

Name	Host - Isotype	Clone	Species Reactivity				Application						Size	Cat.#	Research Area
			Hu	Ms	Rt	Other	WB	IHC	EL	FC	IP	Other			
Factor X	Sh	Pab		+				+	+				1 mg	AL8190	4
Factor X	Sh	Pab		+				+					1 mg	AL8220	4
Factor XI	Sh	Pab	+								DD,I	IEP	1 ml	N89870	4
Factor XI	Gt	Pab	+					+	+				1 mg	O24800	4
Factor XI	Ms IgG	hFXI-2	+					+	+		RIA		100 µg	L54180	4
Factor XII	Sh	Pab	+								DD,I	IEP+	1 ml	N89880	4
Factor XII	Gt	Pab	+					+					1 mg	O24810	4
Factor XII, Heavy Chain	Ms IgG1	801	+					+	+			+	250 µg	O20270	4
Factor XII, Light Chain	Ms IgG1	802	+					+	+				250 µg	O20280	4
Factor XIII	Sh	Pab	+									+	1 mg	P49760	4
Factor XIII	Sh	Pab	+								IEP,DD		1 ml	N89890	4
Factor XIII	Sh	Pab	+										2 mg	O26550	4
Factor XIIIa	Ms IgG1	AC-1A1	+					+	+				500 µl	Q23610	2
Factor XIIIa	Rb	Pab	+					+	+				500 µl	S43070	2
FADD	Rb	Pab	+	+				+					500 µl	V12750	3
FADD	Rb	Pab	+	+	+			+					500 µl	S45850	3
FAK	Rb	Pab	+	+	+	Dg,Fr		+				IF	500 µl	857891	2-22
FAK1, N-term	Rb	Pab	+					+	+				100 µg	GL4960	22-21
FAK2, N-term	Rb	Pab	+	+				+	+	+			100 µg	GL4970	22-21
Fanconi anemia D2	Rb	Pab	+	+				+			+	IF	50 µl	AW8860	10
Fanconi anemia D2	Ms	Mab	+					+			+		100 µl	AW5000	10
Fanconi anemia D2	Ms IgG	Mab	+					+	+				100 µl	GP7740	10
FAP-1	Ms IgG1	2C8	+					+					500 µl	V08110	3
FAS, see CD95															
FAS	Ms IgG1	5F-7	+					+	+	+	+		100 µg	N98280	3-22
FAS	Ms IgG1	5F-9	+					+	+		+		100 µg	N98290	3-22
FAS Ligand	Hm IgG	4A5	+					+	+			Neut	100 µg	S33860	3-22
FAS Ligand	Rb	Pab		(+)	+			+	+				100 µg	AA7870	3-22
FAS Ligand	Rb	Pab	+	(+)		Mk,(Sw)		+	+				100 µg	AA7910	3-22
FAS Ligand	Rb	Pab			+			+	+				100 µg	GS9930	3-22
FAS Ligand	Ms IgM	FSL01	+					+					500 µl	N71360	3
FAS Ligand	Rb	Pab	+	+	+			+	+				500 µl	GH6253	3
FAS Ligand /Apo-I	Gt	Pab	+					+	+			Neut	50 µg	AR4630	9
FAS Ligand /Apo-I -Biotin	Gt	Pab	+					+	+				25 µg	AR2730	9
FAS Ligand -Biotin	Hm IgG	4H9	+					-	+	+	+	Neut	50 tests	S33880	3-22
FAS, intracellular fragment	Ms IgG1	GH-9	+					+	+		+		100 µg	N98300	3-22
Fascin	Ms IgG1	FCN01	+	+				+					500 µl	N71400	13
Fatty Acid Amide Synthase	Rb	Pab	+	(+)	+	(Sw)		+	+				100 µg	R17050	12-16
Fatty Acid Binding Protein	Rb	Pab	+					+	+				100 µl	T89231	12-16-17
Fatty Acid Binding Protein	Rb	Pab			+			+	+				100 µl	T89230	12-16-17
Fatty Acid binding protein	Rb	Pab	+					+	+				100 µg	GS9940	12-16-17
Fatty Acid binding protein	Ms	Mab	+					+	+				100 µg	A19050	12-16
Fatty Acid Binding Protein	Ms IgG1	M79189	+					+					1 mg	P44300	6
Fatty Acid Binding Protein	Gt	Pab	+										1 ml	U71900	6
Fatty Acid Binding Protein	Gt	Pab	+										1 mg	U72810	6
Fatty Acid Binding Protein	Ms IgG1	10E1	+						+				1 mg	O11210	6
Fatty Acid Binding Protein	Ms IgG2b	6B6	+						+				1 mg	O11230	6
Fatty Acid Binding Protein	Ms IgG1	9F3	+						+				1 mg	O11240	6
Fatty Acid Binding Protein	Ms IgG1	5B5	+						+				1 mg	O11220	6
Fatty Acid Synthase	Rb	Pab	+	+		Sw		+			+		100 µl	AW6660	16-17
FCG Receptor, see CD32															
FDFT1, middle region	Rb	Pab	+					+	+				100 µg	GK9050	21
FDFT1, N-term	Rb	Pab	+	+				+	+	+			100 µg	GK9040	21
FDPS, middle region	Rb	Pab	+					+	+	+			100 µg	GK9070	21
FDPS, N-term	Rb	Pab	+					+	+				100 µg	GK9060	21
Feline Calicivirus	Ms IgG	1470							+			IF	100 µg	N95030	15
Feline Immunodeficiency Virus	Ms IgG1k	M5052221			+								250 µg	P44320	15
Feline Immunodeficiency Virus	Ms IgG1	237							+				100 µg	N95990	15
Feline Immunodeficiency Virus, p24	Ms IgG1	1A6				Ct			+				100 µg	N95040	15
Feline Immunodeficiency Virus, p24	Ms IgG2a	737											100 µg	N95050	15
Feline Infectious Peritonitis	Ms IgG1	M510623				Ct			+				250 µg	P44340	15
Feline Infectious Peritonitis Virus	Ms IgG	127							+				100 µg	N96000	15
Feline Leukemia Virus	Ms IgG2	M510601				Ct		+	+				250 µg	P44360	15
Feline Leukemia Virus, gp70	Ms IgG2b	M650721				Ct		+	+				250 µg	P44390	15

Name	Host - Isotype	Clone	Species Reactivity				Application						Size	Cat.#	Research Area	
			Hu	Ms	Rt	Other	WB	IHC	ICC	EL	FC	IP				Other
Feline Leukemia Virus, p15e	Ms IgG1	2B5												100 µg	142480	15
Feline Leukemia Virus, p27	Gt	Pab				Ct								1 mg	P49770	15
Feline Leukemia Virus, p27	Gt	Pab												1 ml	N88850	15
Feline Leukemia Virus, p27	Ms IgG1	A10-J												100 µg	900240	15
Feline Leukemia Virus, p27 -Biotin	Gt	Pab												1 ml	N91170	15
Feline Leukemia Virus, p27 -FITC	Gt	Pab												1 ml	N91180	15
Feline Leukemia Virus, p27 -HRP	Gt	Pab												1 ml	N95730	15
Feline Rhinotracheitis Virus	Ms IgG	371												100 µg	N96010	15
Fen-1	Rb	Pab	+											100 µl	996250	3
FEN-1	Rb	Pab	+	(+)		(Xe)								100 µl	AW9950	10
FEN-1	Rb	Pab	+	(+)										100 µl	AW9951	10
FEN-1	Ms IgG1	14A1	+											500 µl	V03220	10
FEN-1	Rb	Pab	+											100 µg	GR5380	10
FEN-1	Rb	Pab	+											100 µg	GR5600	10
Fenitrothion	Rb	Pab												1 ml	B18730	11
Fenitrothion	Ck	Pab												1 ml	B18740	11
FER, C-term	Rb	Pab	+											100 µg	GL4980	22-21
Ferritin	Ms IgG1	M94156	+											1 mg	P44420	17-4
Ferritin	Gt	Pab	+											1 mg	P61630	17-4
Ferritin	Rb	Pab	+											1 ml	P49800	17-4
Ferritin	Ms IgG1	ME.110	+											1 mg	GG1610	17-4
Ferritin	Ms IgG1	ME.118	+											1 mg	GG1620	17-4
Ferritin	Ms IgG1	502	+											1 mg	N92780	17-4
Ferritin	Ms IgG1	505	+											1 mg	N92800	17-4
Ferritin	Ms IgG2a	501	+											1 mg	N92810	17-4
Ferritin	Ms IgG1	503	+											1 mg	N92820	17-4
Ferritin	Ms IgG2a	090-10175	+											1 mg	S35010	17-4
Ferritin	Ms IgG1	090-12710	+											1 mg	S35000	17-4
Ferritin	Gt	Pab	+											1 mg	GG0330	17-4
Ferritin -HRP	Ms IgG	M94157	+											500 µg	P42060	17-4
Ferritin, H-chain	Rb	Pab	+	+	+	Bv,Mk+								100 µg	D37260	17-4
Ferritin, Heart	Sh	Pab	+	(+)	(+)									200 µl	GS9950	17-4
Ferritin, human liver	Rb	Pab	+											2 ml	S35730	17-4
Ferritin, L-chain	Rb	Pab	+		(+)	Sw,Rb								100 µg	F93580	17-4
Ferritin, Liver	Ms IgG1	Mab												100 µg	C78920	17-4
Ferritin, Spleen	Rb	Pab	+											100 µl	H74880	17-4
FES, N-term	Rb	Pab	+											100 µg	GL4990	22-21
Fetoprotein alpha	Ms IgG1	M94115	+											1 mg	954840	5
Fetoprotein alpha	Gt	Pab	+											1 mg	954850	5
Fetoprotein alpha	Gt	Pab	+											1 ml	P48380	5
Fetoprotein alpha	Rb	Pab	+											1 ml	P48370	5
Fetoprotein alpha	Ms IgG1	1301	+											1 mg	N92310	5
Fetoprotein alpha	Ms IgG1	1302	+											1 mg	N92320	5
Fetoprotein alpha	Ms IgG1	1303	+											1 mg	N92330	5
Fetoprotein alpha	Ms IgG1	1306	+											1 mg	N92340	5
Fetoprotein alpha	Ms IgG1	1309	+											1 mg	N92360	5
Fetoprotein alpha	Ms IgG1	1305	+											1 mg	N92370	5
Fetoprotein alpha	Gt	Pab	+											10 ml	GG0270	5

Fatty Acid Synthase (FAS)

- ◆ Specificity : Fatty Acid Synthase (FAS)
- ◆ Catalog number : **AW6660**
- ◆ Host and isotype : Rabbit IgG
- ◆ Species reactivity : Human, Mouse, Pig
- ◆ Applications and suggested dilution :
 - Western blot 1:1000 (Chemilum.)
 - Immunoprecipitation 1:100 (mouse tissue)



50µg of total mouse liver lysate was separated on a 4-15% SDS polyacrylamide gel, and transferred to nitrocellulose for Western blot analysis using the polyclonal anti-FAS antibody AW6660 at a 1:1000 dilution. The signal was developed by standard chemiluminescence and exposed to film for approximately 1 second. FAS is seen as an approximately 272 kDa band.

Primary Antibodies & Ags

Alphabetical Listing

Name	Host - Isotype	Clone	Species Reactivity				Application						Size	Cat.#	Research Area
			Hu	Ms	Rt	Other	WB	IHC	EL	FC	IP	Other			
Fetoprotein alpha	Rb	Pab	+										1 mg	N87520	5
Fetoprotein alpha	Ms IgG2a	4A3	+							+			1 mg	N72720	5
Fetoprotein alpha	Ms IgG1	5H7	+							+			1 mg	N73260	5
Fetoprotein alpha	Ms IgG2a	C3	+			Sw,Dg				+			500 µl	N59180	5
Fetoprotein alpha	Rb	Pab	+			Sw,Sh				+	+		500 µl	N59200	5
Fetoprotein alpha	Rb	Pab	+							+	+		500 µl	AO1051	5
Fetoprotein alpha -HRP	Ms	M511605	+										500 µg	P42010	5
Fetoprotein alpha Receptor	Ms IgG2a	2B8	+							+			1 mg	O13460	22-5
Fetoprotein alpha Receptor	Ms IgG2a	5E1	+							+	+		1 mg	O13490	22-5
Fetoprotein Transcription Factor alpha1	Rb	Pab	+	+	+					+			50 µl	FT2680	10
FGF 4, C-term	Rb	Pab	+							+	+	+	100 µg	GL8310	9
FGF 4, N-term	Rb	Pab	+							+	+		100 µg	GL8300	9
FGF 5	Ms	Mab	+							+	+	Neut	500 µg	AR6370	9
FGF 9	Rb	Pab		+						+	+	Neut	50 µg	AR5800	9
FGF 9	Rb	Pab		+						+	+	Neut	100 µg	O12300	9
FGF 9 -Biotin	Rb	Pab		+						+	+		25 µg	AR3840	9
FGF 10	Gt	Pab	+							+	+	Neut	50 µg	AR4670	9
FGF 10 -Biotin	Gt	Pab	+							+	+		25 µg	AR2770	9
FGF 16	Gt	Pab	+							+	+	Neut	50 µg	AR4680	9
FGF 16 -Biotin	Gt	Pab	+							+	+		25 µg	AR2780	9
FGF 17	Rb	Pab	+							+	+	Neut	50 µg	AR4690	9
FGF 17	Gt	Pab	+							+	+	Neut	50 µg	AR4700	9
FGF 17 -Biotin	Rb	Pab	+							+	+		25 µg	AR2790	9
FGF basic	Rb	Pab	+							+	+	RIA	500 µg	N73280	9
FGF basic	Ms IgG1	BD1306	+							+			500 µg	GG1070	9
FGF basic -Biotin	Rb	Pab	+							+	+		25 µg	AR2740	9
FGF Receptor 1	Ms IgG1	M5G10	+							+	+	+	250 µg	S34170	22-21-9
FGF Receptor 1	Ms IgG1	M19B2	+							+	+	+	250 µg	S34180	22-21-9
FGF Receptor 1	Ms IgG1	M17D10	+							+	+	+	250 µg	S34190	22-21-9
FGF Receptor 1 alpha	Ms IgG1	M1C4	+							+	+	+	250 µg	S34210	22-21-9
FGF Receptor 1 alpha	Ms IgG2a	M2F12	+							+	+	+	250 µg	S34200	22-21-9
FGF Receptor 1 beta	Ms IgG2b	M17A3	+							+	+	+	250 µg	S34220	22-21-9
FGF Receptor 1, C-term	Rb	Pab	+							+	+	+	100 µg	GL4280	22-21-9
FGF Receptor 1, N-term	Rb	Pab	+	+						+	+	+	100 µg	BB6920	22-21-9
FGF Receptor 2, C-term	Rb	Pab	+							+	+	+	100 µg	GL4290	22-21-9
FGF Receptor 2, N-term	Rb	Pab	+	+	+	Mk				+	+	+	100 µg	AN5640	22-21-9
FGF Receptor 3, C-term	Rb	Pab	+							+	+	+	100 µg	GL4300	22-21-9
FGF Receptor 4, N-term	Rb	Pab	+							+	+	+	100 µg	GL4310	22-21-9
FGR, N-term	Rb	Pab	+							+	+	+	100 µg	GL5000	22-21-9
FHIT	Rb	Pab	+							+			500 µl	GH5873	5
FHL2	Rb	Pab	+							+			100 µg	GR5080	10
FHL2	Rb	Pab	+							+			100 µg	GR4950	10
Fibrillin-1	Ms IgG1	11C1.3	+			Bv				+	+	EM,IF	500 µl	279750	19
Fibrillin-1	Ms IgG1	12A5.18	+			Bv				+	+	EM,IF	500 µl	071772	19
Fibrin / Fibrinogen	Ms IgM	MFB-HB	+							+	+		1 ml	O01330	4
Fibrinogen	Gt	Pab	+							+	+		50 mg	AM0360	4
Fibrinogen	Rb	Pab		+						+	+		1 mg	BM0270	4
Fibrinogen	Sh	Pab										RID,DD+	1 ml	759110	4
Fibrinogen	Ms IgG1	FgA	+							+	+		1 mg	819050	4
Fibrinogen	Ms IgG2a	27C8	+							+	+		1 mg	GG1640	4
Fibrinogen	Ms IgG1	40F11	+							+	+		1 mg	GG1650	4
Fibrinogen	Ms IgG1	1F3	+							+	+		1 mg	GG1630	4
Fibrinogen	Gt	Pab				+						IEP,DD	2 ml	P97890	4
Fibrinogen -FITC	Sh	Pab	+									IF	1 ml	221270	4
Fibrinopeptide A	Ms IgG2a	49D2	+							+			1 mg	GG1660	4

Immunologicals

A.100

interchim

Research Area Code

- | | | | | |
|---|--|---|---|--|
| 1 Allergens | 6 Cardiac Markers and related molecules | 11 Drugs and resistance | 16 Lipides/Apolipo/Lipoproteins | 20 Neuroscience |
| 2 Anglo/Histogenesis | 7 CD Markers | 12 Enzymes & enzymes inhibitors | 17 Membrane channels and transport proteins | 21 Post translational modifications |
| 3 Apoptosis/cell cycle | 8 Cell adhesion | 13 Hematopoietic markers | 18 Metabolism/Energy pathways | 22 Signal transduction/Stress response |
| 4 Blood and serum proteins | 9 Cytokine/Chemokine/Growth factors | 14 Hormones/Steroids | 19 Miscellaneous | 23 Structural proteins |
| 5 Cancer, Hypoxia and related molecules | 10 DNA Replication/Transcription/Repairs | 15 Infectious agents related molecules & resistance | | 24 Tags and Markers |

Primary Antibodies & Ags

Alphabetical Listing

Name	Host - Isotype	Clone	Species Reactivity				Application						Size	Cat.#	Research Area	
			Hu	Ms	Rt	Other	WB	IHC	EL	FC	IP	Other				
Fibrinopeptide A	Ms IgG2a	1F7	+									+	1 mg	GG1670	4	
Fibrinopeptide A	Ms IgG2b	26E7	+									+	1 mg	GG1680	4	
Fibronectin	Sh	Pab											1 ml	P49850	4	
Fibronectin	Ms IgG1	EP-5	+									+	200 µg	O08360	4	
Fibronectin	Rb	Pab										+	500 µg	O20030	4	
Fibronectin	Sh	Pab	+		+		GP,Ct						RID,DD+	1 ml	N87870	4
Fibronectin	Ms IgG1	1601	+										1 mg	N92830	4	
Fibronectin	Ms IgG1	Fn-4	+										200 µg	O08340	4	
Fibronectin	Ms IgG1	FBN11	+	+	+							+	IF	500 µg	Q23990	23
Fibronectin	Ms IgG1	HFN 7.1	+									+	Bk,IF	500 µl	N71470	23
Fibronectin	Ms IgG1	HFN 36.3	+				Bv,Dg					+	IF	500 µl	289772	23
Fibronectin	Ms IgG1	TV-1	+	+	+		Sw					+	IF	500 µl	N71550	23
Fibronectin	Ms IgG1	568	+									+	IF	500 µl	N71590	23
Fibronectin	Ms IgG1	617	+									+	IF	500 µl	N71670	23
Fibronectin	Ms IgG1	618	+									+	IF	500 µl	N71700	23
Fibronectin	Rb	Pab	+	+								+		500 µl	N71510	23
Fibronectin, cellular	Ms IgG1	Fn-3	+									+	IF	200 µg	O08350	23
Filaggrin	Ms IgG1	FLG01	+									+		500 µl	Q24060	23-5
Filamentous Phages M13/fd/F1 -Biotin	Ms IgG2b	B62-FE2										+	+	0.25 ml	BC9980	15
Filamin	Ms IgG1	PM6/317	+		+		GP,Ck					+	+	200 µg	O08370	23
Filamin	Ms IgG1	FLMN01	+	+	+		GP,Rb+					+	+	500 µl	Q24120	23
Filamin A , <i>Advanced</i> panel	Rb	Pab	+									+		3x100µl	GR5920	22
Filamin, 90kDa	Ms IgG1	T110	+									+	IF	200 µg	O08380	23
FITC	Gt	Pab										+		2 ml	P98940	24
FITC	Gt	Pab										+	+	1 mg	P98950	24
FITC	Ms IgG2a	M25285												1 mg	P44450	24
FITC	Rb	Pab												1 ml	P49880	24
FITC	Gt	Pab												10 mg	P49890	24
FITC	Ms IgG2a	903												1 mg	N92840	24
FITC	Ms IgG1	901												1 mg	742870	24
FITC	Ms IgG2a	902												1 mg	N92850	24
FITC	Gt	Pab										+	IEP	1 mg	S35540	24
FITC	Rb	Pab										+	+	1 mg	N87880	24
FITC	Ms IgG2a	19F/2A3										+	+	1 mg	N94640	24
FITC	Ms IgG1	F4/1										+	+	500 µl	N71770	19
FITC -Alk. Phos.	Rb	Pab										+	+	1 ml	876710	24
FITC -HRP	Rb	Pab										+	+	1 ml	N94650	24
FIZZ3, see Resistin																
FKBP	Rb	Pab	+		(+)							+		100 µl	GP8050	22
FKBP-135	Rb	Pab	+									+		100 µl	GP7800	22
FKBP-135	Rb	Pab	+									-		100 µl	GP7980	22
FKBP-135	Rb	Pab	+									+		100 µg	GR3990	22
FKBP-135	Rb	Pab	+									+		100 µg	GR3680	22
FKBP-135	Rb	Pab	+									+		100 µg	GR4790	22
FKLF	Rb	Pab	+									+		100 µg	AW6670	10
Flag epitope	Rb	Pab										+	+	100 µg	GS9960	24
Flag epitope	Rb	Pab										+	+	250 µg	AM0280	24
FLASH	Rb	Pab			+							+	+	100 µg	AW6692	22
FLASH	Rb	Pab	+		(+)							+	+	100 µg	GS9970	22
FLASH	Rb	Pab	+									+		100 µg	AW6680	22
FLASH	Rb	Pab	+									+		100 µg	AW6690	22
Fli-1	Rb	Pab	+	+	+							+	+	500 µl	GH5990	5
FLIP, see I-FLICE																
FLJ10719, see KIAA1794																
FLJ20530 / KAONASHI1	Rb	Pab	+									+		100 µg	GR5540	19

Species legend : Bd : Bird, Bv : Bovine, Ck : Chicken or Hen, Ct : Feline, Dg : Canine, Dr : Drosophila, Eq : Equine, F : Fish, Fr : Frog, Ft : Ferret, GP : Guinea Pig, Gt : Goat, Hm : Hamster, Hrs : Horse, Hu : Human, Ko : Kangaroo, M : Mammalian, Mi : Mink, Mk : Monkey, Ms : Mouse, Ne : Nematode, Op : Opossum, Pl : plant, Ql : Quail, Rb : Rabbit, Rt : Rat, Sh : Sheep, Sw : Porcine, Sy Hm : Syrian Hamster, Xe : Xenopus, Ye : Yeast

Size : Size indicated in bold means several sizes and formats are available (sample size or bigger size, unpurified neat serum, without azide or BSA, positive control...) : contact us for more detail

Application legend : Bk : Blocking, CD : Cell detection, Ch : ChIP, COA : ELISA capture, Db : Dot Blot, DD : Double diffusion, EL : ELISA detection, EM : Electron Microscopy, FCM : Flow Cytometry, FIA : FluoroImmunoAssay, GS : Gel (super)shift, HA : Hemagglutination/Latex agglutination, ICC : ImmunoCytoChemistry, IEP : Immunoelectrophoresis, IF : Immunofluorescence, IHC : ImmunoHistoChemistry, IP : Immunoprecipitation/Immunopurification, ISH : In Situ Hybridization, KA : Kinase assay, LF : Lateral flow, Neph : Nephelometry, Neut : Neutralizing, RIA : RadioImmunoassay, RID : Radial Immunodiffusion, SB : Southern Blot, TIA : Turbidimetry

Name : Prefixes as 'alpha', 'D1-', 'Pro-',... are not considered for the alphanumerical sorting, and often included after the main name.

(+) : Expected species cross-reactivities based on immunogen sequence homology _ Expected application suitability.

Primary Antibodies & Ags

Alphabetical Listing

Name	Host - Isotype	Clone	Species Reactivity				Application							Size	Cat.#	Research Area
			Hu	Ms	Rt	Other	WB	IHC	ICC	EL	FC	IP	Other			
Flk-1 / VEGFR-2	Rb	Pab	+	+	+		+	+						500 µl	S44421	8-2
Flk-1 / VEGFR-2	Ms IgG1	Mab	+				+	+	+					100 µg	R40350	8-2
Flk-1 / VEGFR-2	Rt IgG1	Mab		+			+	+	+					100 µg	GS9980	8-2
Flk-1 / VEGFR-2	Rb	Pab	+	+	+		+	+						500 µl	S44430	8-2
Flk-1 / VEGFR-2	Rb	Pab	+	+	+		+	+						100 µg	R39970	8-2
Flk-1 / VEGFR-2 -Biotin	Ms	Mab	+				+	+						100 µg	GS9990	8-2
Flk-1 / VEGFR-2 -PE	Ms	Mab	+				+	+						250 µl	GT0000	8-2
FLK-2, see Flt-3																
FLRF / RNF41	Rb	Pab	+	+			+				+			100 µg	GR5740	10
FLRF / RNF41	Rb	Pab	+	+			+				+			100 µg	GR6070	10
Flt-1	Rb	Pab	+	+	+			+						500 µl	S44483	8-2
Flt-1 / VEGFR-1	Ms IgG1	Mab	+				+	+	+					100 µg	C80540	8-2
Flt-1 / VEGFR-1	Rt IgG2a	Mab		+			+	+						100 µg	GU7950	8-2
Flt-1 / VEGFR1	Rb	Pab	+	+	+		+	+						500 µl	S44490	8-2
Flt-1 / VEGFR-1	Rb	Pab	+	(+)	(+)		+	+						100 µl	I10070	8-2
Flt-1, C-term	Rb	Pab	+				+	+						100 µg	GL4330	8-2
Flt-1, N-term	Rb	Pab	+				+	+						100 µg	GL4320	8-2
Flt-2, C-term	Rb	Pab	+				+	+	+					100 µg	GL4340	8
Flt-3 / FLK2 (CD135)	Ms IgG1	SF1.340	+								+			200 µg	O10610	9
Flt-3, C-term	Rb	Pab	+				+	+	+					100 µg	GL4360	22-21
Flt-3, N-term	Rb	Pab	+				+	+	+					100 µg	GL4350	22-21
Flt3-Ligand	Rb	Pab	+				+	+				Neut		100 µg	O12320	9
Flt-3-Ligand	Rb	Pab	+				+	+				Neut		50 µg	AR4710	9
Flt-3-Ligand -Biotin	Rb	Pab	+				+	+	+					25 µg	AR2750	9
Flt-4 / VEGFR-3	Rb	Pab	+	+	+		+	+			+			500 µl	GH5641	8
Flt-4 / VEGFR-3	Rb	Pab	+				+	+						100 µg	I25761	8
Flt-4 / VEGFR-3	Ms IgG1	Mab	+				+	+	+					100 µg	GU7960	8
Flt-4 / VEGFR-3	Rb	Pab		+	(+)		+	+						100 µg	I25760	8
Flt-4 / VEGFR-3	Rt IgG1	Mab		+			+	+	+					100 µg	GU7970	8
Flt-4, C-term	Rb	Pab	+				+	+						100 µg	GL4380	22-21
Flt-4, N-term	Rb	Pab	+				+	+	+					100 µg	GL4370	22-21
FNTA, C-term	Rb	Pab	+				+	+						100 µg	GK9110	21
FNTA, middle region	Rb	Pab	+	+			+	+						100 µg	GK9100	21
FNTB, N-term	Rb	Pab	+				+	+						100 µg	GK8990	21
Fodrin-alpha (spectrin-alpha), N-term	Rb	Pab	+		(+)		+	+						100 µg	A54700	3
Folate	Ms IgG1	M741809	+											1 mg	P44480	4
Folate	Ms IgG1	M608297												1 mg	P44490	4
Folate	Rb	Pab								+				1 ml	P49910	4
Folate	Ms IgG1	8/33								+			RIA	1 mg	N97550	4
Folate	Ms IgG1	8/39								+			RIA	1 mg	S35020	4
Folate Binding Protein	Rb	Pab						Bv						1 ml	P49900	4
Folate Transporter	Rb	Pab	+				+	+						100 µg	BC9910	17
Folate Transporter	Rb	Pab			(+)	+	+	+						100 µg	GU7980	17
Follicle Stimulating Hormone	Ms IgG2a	M94166	+											1 mg	P44510	14
Follicle Stimulating Hormone	Rb	Pab	+											1 ml	P49920	14
Follicle Stimulating Hormone	Rb	Pab	+							+			RIA,COA	1 mg	P61640	14
Follicle Stimulating Hormone	Ms IgG1	FSH02	+					Bv	+					500 µl	O24320	14
Follicle Stimulating Hormone	Ms IgG1	SP107	+						+					500 µl	GH2845	14
Follicle Stimulating Hormone	Rb	Pab			+		+	+						50 µl	GG4210	14
Follicle Stimulating Hormone	Ms IgG1	057-10011	+											1 mg	N92870	14
Follicle Stimulating Hormone	Ms IgG2a	090-10264												1 mg	S34370	14
Follicle Stimulating Hormone	Ms IgG1	090-10243												1 mg	S34360	14
Follicle Stimulating Hormone	Ms IgG1	090-14155												1 mg	S34350	14
Follicle Stimulating Hormone alpha	Ms IgG1	M94136	+											1 mg	P44550	14
Follicle Stimulating Hormone alpha	Ms IgG1	M94167	+											1 mg	P44560	14

Research Area Code

- | | | | | |
|---|--|---|---|--|
| 1 Allergens | 6 Cardiac Markers and related molecules | 11 Drugs and resistance | 16 Lipides/Apolipo/Lipoproteins | 20 Neuroscience |
| 2 Anglo/Histogenesis | 7 CD Markers | 12 Enzymes & enzymes inhibitors | 17 Membrane channels and transport proteins | 21 Post translational modifications |
| 3 Apoptosis/cell cycle | 8 Cell adhesion | 13 Hematopoietic markers | 18 Metabolism/Energy pathways | 22 Signal transduction/Stress response |
| 4 Blood and serum proteins | 9 Cytokine/Chemokine/Growth factors | 14 Hormones/Steroids | 19 Miscellaneous | 23 Structural proteins |
| 5 Cancer, Hypoxia and related molecules | 10 DNA Replication/Transcription/Repairs | 15 Infectious agents related molecules & resistance | | 24 Tags and Markers |

Primary Antibodies & Ags

Alphabetical Listing

Name	Host - Isotype	Clone	Species Reactivity				Application						Size	Cat.#	Research Area	
			Hu	Ms	Rt	Other	WB	IHC	EL	FC	IP	Other				
Follicle Stimulating Hormone beta	Ms IgG1	FS01	+					+					FIA	500 µl	N71790	14
Follicle Stimulating Hormone beta	Ms IgG1	ME.112	+							+			RIP	1 mg	L83460	14
Follicle Stimulating Hormone beta	Ms IgG1	702	+											1 mg	N92880	14
Follicle Stimulating Hormone beta	Ms IgG1	709	+											1 mg	N92890	14
Follicle Stimulating Hormone beta 2	Ms IgG1	INN-hFSH-60	+						+	+				500 µg	GG2110	14
Follicle Stimulating Hormone beta(KLH)	Rb	Pab												1 ml	U71910	14
Follicle Stimulating Hormone -HRP	Ms IgG1	M607109	+							+				500 µg	P42070	14
Follicle Stimulating Hormone -HRP	Rb	Pab	+							+				500 µg	P42400	14
Follicle Stimulating Hormone, intact	Rb	Pab	+							+				1 mg	S35610	14
Follicle Stimulating Hormone, intact	Ms IgG1	Mab	+							+			RIA	500 µg	GG2100	14
Formyl Peptide Receptor 1	Rb	Pab	+							+				50 µl	FT2270	22
Formyl Peptide Receptor 1	Rb	Pab	+							+				50 µl	FT2280	22
Formyl Peptide Receptor-Like 1	Rb	Pab	+							+				50 µl	FT1870	22
Formyl Peptide Receptor-Like 2	Rb	Pab	+							+				50 µl	FT3620	22
Formyl Peptide Receptor-Like 2	Rb	Pab	+							+				50 µl	FT3630	22
Formyl Peptide Receptor-Like 2	Rb	Pab	+							+				50 µl	GG4800	22
FosB	Rb	Pab	+	+						+				100 µl	GS1130	3
FosB	Rb	Pab	+							+				100 µg	GS2510	3
FosB	Ms IgG1	83B1138	+							+				100 µg	GS1750	3
FosB, <i>Nushift</i>	Rb	Pab	+	+									GS	17 Rxns	GS1050	3
FOXO1a	Rb	Pab	+							+				100 µg	GR4680	3
FPG	Rb	Pab								+				100 µl	Q69040	3
Fra 2	Rb	Pab	+	+	+		Ck			+				500 µl	S46001	3
Fra 2	Rb	Pab	+	+						+				100 µl	GS1120	3
Fra 2	Rb	Pab	+							+				500 µl	S46010	3
Fractalkine	Rb	Pab	+							+	+		Neut	50 µg	AR4720	9
Fractalkine	Rb	Pab	+											100 µg	O12330	9
Fractalkine -Biotin	Rb	Pab	+							+	+			25 µg	AR2820	9
Franceisella tularensis	Ms IgG2a	M0232621								+	+			1 mg	U69940	15
Francisella tularensis (LPS)	Ms IgG3	T14									+		IF	1 mg	O03930	15
Francisella tularensis (LPS)	Ms IgG2a	FB11									+		IF	1 mg	994190	15
Frataxin, C-term	Rb	Pab	(+)	+						+	+			100 µg	IO9890	17
Frequenin	Ck	Pab		+						+				1 mg	S35860	20
Frizzled 1	Rb	Pab	+	+	+					+				50 µl	FT4180	22
Frizzled 2	Rb	Pab	+	+	+					+				50 µl	GG4740	22
Frizzled 3	Rb	Pab	+	+	+					+				50 µl	GG4830	22
Frizzled 3	Rb	Pab	+							+				50 µl	GG4831	22
Frizzled 4	Rb	Pab	+	+	+					+				50 µl	FT4840	22
Frizzled 4	Rb	Pab	+							+				50 µl	GG5250	22
Frizzled 5	Rb	Pab	+							+				50 µl	FT4350	22
Frizzled 5	Rb	Pab	+							+				50 µl	FT4370	22
Frizzled 6	Rb	Pab	+							+				50 µl	FT4570	22
Frizzled 6	Rb	Pab	+	+						+				50 µl	FT4580	22
Frizzled 7	Rb	Pab	+	+						+				50 µl	FT4820	22
Frizzled 7	Rb	Pab	+	+						+				50 µl	FT4810	22
Frizzled 8	Rb	Pab	+	+						+				50 µl	FT4730	22
Frizzled 8	Rb	Pab	+	+						+				50 µl	GG4850	22
Frizzled 9	Rb	Pab	+	+	+					+				50 µl	FT4950	22
Frizzled 9	Rb	Pab	+	+	+					+				50 µl	FT4980	22
Frizzled 10	Rb	Pab	+	+						+				50 µl	FT4500	22
FRK, N-term	Rb	Pab	+							+	+			100 µg	GL5010	21-22
Fructose 6-Phosphate Kinase	Gt	Pab					Rb			+			IEP	2 ml	O25170	12
Fructose 6-Phosphate Kinase	Gt	Pab					Rb			+			IEP	50 mg	O00530	12
Fructose 6-Phosphate Kinase -HRP	Gt	Pab					Rb			+			IEP	20 mg	O01150	12
FSHR	Rb	Pab	+	+	+					+				50 µl	FT2500	22-14

Species legend : Bd : Bird, Bv : Bovine, Ck : Chicken or Hen, Ct : Feline, Dg : Canine, Dr : Drosophila, Eq : Equine, F : Fish, Fr : Frog, Ft : Ferret, GP : Guinea Pig, Gt : Goat, Hm : Hamster, Hrs : Horse, Hu : Human, Ko : Kangaroo, M : Mammalian, Mi : Mink, Mk : Monkey, Ms : Mouse, Ne : Nematode, Op : Opossum, Pl : plant, Ql : Quail, Rb : Rabbit, Rt : Rat, Sh : Sheep, Sw : Porcine, Sy Hm : Syrian Hamster, Xe : Xenopus, Ye : Yeast

Size : Size indicated in bold means several sizes and formats are available (sample size or bigger size, unpurified neat serum, without azide or BSA, positive control...) : contact us for more detail

Application legend : Bk : Blocking, CD : Cell detection, Ch : ChIP, COA : ELISA capture, Db : Dot Blot, DD : Double diffusion, EL : ELISA detection, EM : Electron Microscopy, FCM : Flow Cytometry, FIA : FluoroImmunoAssay, GS : Gel (super)shift, HA : Hemagglutination/Latex agglutination, ICC : ImmunoCytoChemistry, IEP : Immunoelectrophoresis, IF : Immunofluorescence, IHC : ImmunoHistoChemistry, IP : Immunoprecipitation/Immunopurification, ISH : In Situ Hybridization, KA : Kinase assay, LF : Lateral flow, Neph : Nephelometry, Neut : Neutralizing, RIA : RadiolImmunoassay, RID : Radial Immunodiffusion, SB : Southern Blot, TIA : Turbidimetry

Name : Prefixes as 'alpha', 'D1-', 'Pro-',... are not considered for the alphanumerical sorting, and often included after the main name.

(+) : Expected species cross-reactivities based on immunogen sequence homology _ Expected application suitability.

Primary Antibodies & Ags

Alphabetical Listing

Name	Host - Isotype	Clone	Species Reactivity				Application						Size	Cat.#	Research Area
			Hu	Ms	Rt	Other	WB	IHC	ICC	EL	FC	IP			
FSHR	Rb	Pab	+	+	+		+						50 µl	FT3940	22-14
Furosemide	Rb	Pab				+			+				1 ml	P49940	11
FUS	Rb	Pab	+				+			+			100 µg	BH9960	10
FUS	Rb	Pab	+				+			+			100 µg	GR3670	10-5
FUS	Rb	Pab	+				+			+			100 µg	GR5420	10-5
FUS	Rb	Pab	+				+			+			100 µg	GR4520	10-5
Fusin, see CXCR4															
Fyn	Ms IgG1	1S	+	+	+		+	+				KA	500 µl	N71850	22
Fyn, N-term	Rb	Pab	+	+			+	+	+				100 µg	GL5020	21-22

G

G alpha 0 G-protein	Ms IgG1	1C.2	+	+		GP,Rb+	+						500 µl	N71880	22-20
G alpha 0 G-protein	Ms IgG1	2A.3	+	+	+	Bv,GP	+						500 µl	796081	22-20
G alpai 1 G-Protein	Ms IgG2b	R4.5	+	+	+	Bv,GP	+						500 µl	385641	22-20
G alpai 1 G-Protein	Ms IgG2b	L5.6	+	+	+	Bv,GP	+						500 µl	385651	22-20
G protein, beta common	Rb	Pab					+	+					1 ml	N86830	
G protein, G alpha H	Rb	Pab			+	Bv	+	+					1 ml	N86840	3-22
G protein, G alpha i-1	Rb	Pab					+						1 ml	N86850	3-22
G protein, G alpha i1-2, C-term	Rb	Pab					+						1 ml	O15190	3-22
G protein, G alpha i-3, C-term	Rb	Pab	+				+			+			50 µl	N87580	3-22
G protein, G alpha i-3, C-term	Rb	Pab					+						1 ml	N86860	3-22
G protein, G alpha i-3, C-term	Rb	Pab					+						50 µl	N87590	3-22
G protein, G alpha q-11, C-term	Rb	Pab					+			+			50 µl	N87600	3-22
G protein, G alpha s, C-term	Rb	Pab					+						50 µl	N87610	3-22
G protein, G alpha Transducin	Rb	Pab					+	+					1 ml	N86880	3-22
G protein, G alpha x/z, C-term	Rb	Pab					+	+					1 ml	N86890	3-22
G protein, G Protein, beta	Rb	Pab					+	+					50 µl	N87560	3-22
G6PDH	Rb	Pab	+	+			+			+			100 µg	AL0870	19
G6PDH	Rb	Pab	+	+			+			+			100 µl	AW6700	12
G6PDH	Rb	Pab	+	+						+			400 µl	GP8250	12
G6PDH	Gt	Pab							+		IEP		50 mg	N98680	12
G6PDH	Gt	Pab							+		IP		2 ml	O26920	12
G6PDH - Agarose	Rb	Pab								+			100 µg	AL2060	19
G6PDH - HRP	Gt	Pab							+		IEP		20 mg	N98460	12
G9a, middle region	Rb	Pab	+				+	+					100 µg	GK3470	21-10
G9a, N-term	Rb	Pab	+				+	+		+			100 µg	GK3460	21-10
Gab-1 (Grb2-associated binder-1)	Rb	Pab	+	+	+	Mk	+	+		+			500 µl	N71930	22
Gab-1 (Grb2-associated binder-1)	Rb	Pab	+					+					500 µl	GH5880	
GABA	Rb	Pab					+	+					100 µg	GU8010	17
GABA A Receptor alpha 1	Rb	Pab	+	+	+	Bv,Ck	+	+					100 µg	E60600	20-22
GABA A Receptor alpha 1	Rb	Pab	+	+	+	Bv,Ck	+	+					100 µg	I80770	20-22
GABA A Receptor alpha 1	Ms IgG1	Mab				Bv	+	+					100 µg	AL4060	20-22
GABA A Receptor alpha 1	Rb	Pab	+	+	+	Bv,Ck	+	+					100 µg	E60601	20-22
GABA A Receptor alpha 1	Rb	Pab	+	+	+		+						500 µl	GH5633	20-22
GABA A Receptor alpha 1	Rb	Pab	+	+	+		+						50 µl	AW6850	20-22
GABA A Receptor alpha 1	Rb	Pab		+	+		+			+			100 µl	AW6740	20-22
GABA A Receptor alpha 1	Rb	Pab		+	+		+			+			100 µl	AW6710	20-22
GABA A Receptor alpha 2	Rb	Pab	+	+	+		+	+					100 µg	AL4070	20-22
GABA A Receptor alpha 2	Rb	Pab	+	+	+	Bv	+						50 µl	AW6860	20-22
GABA A Receptor alpha 3	Rb	Pab	+	+	+		+	+					100 µg	AL4100	20-22
GABA A Receptor alpha 4	Rb	Pab	+	+	+		+			+			100 µl	AW6760	20-22
GABA A Receptor alpha 4	Rb	Pab	+	+	+		+			+			100 µl	AW6770	20-22
GABA A Receptor alpha 5	Rb	Pab		+	+		+						100 µl	AW6780	20-22
GABA A Receptor alpha 6	Rb	Pab	(+)	+	+		+	+					100 µg	I25240	20-22
GABA A Receptor alpha 6	Rb	Pab	+	+	+		+						50 µl	AW6870	20-22

Research Area Code

- | | | | | |
|---|--|---|---|--|
| 1 Allergens | 6 Cardiac Markers and related molecules | 11 Drugs and resistance | 16 Lipides/Apolipo/Lipoproteins | 20 Neuroscience |
| 2 Angio/Histogenesis | 7 CD Markers | 12 Enzymes & enzymes inhibitors | 17 Membrane channels and transport proteins | 21 Post translational modifications |
| 3 Apoptosis/cell cycle | 8 Cell adhesion | 13 Hematopoietic markers | 18 Metabolism/Energy pathways | 22 Signal transduction/Stress response |
| 4 Blood and serum proteins | 9 Cytokine/Chemokine/Growth factors | 14 Hormones/Steroids | 19 Miscellaneous | 23 Structural proteins |
| 5 Cancer, Hypoxia and related molecules | 10 DNA Replication/Transcription/Repairs | 15 Infectious agents related molecules & resistance | | 24 Tags and Markers |