

Primary Antibodies & Ags

Alphabetical Listing

Name	Host - Isotype	Clone	Species Reactivity				Application						Size	Cat.#	Research Area
			Hu	Ms	Rt	Other	WB	IHC	EL	FC	IP	Other			
W															
WAF1 p21	Ms IgG1	WA1	+					+	+	+			200 µg	O08670	5
WAPL	Rb	Pab	+					+					100 µg	GR4030	10
WASP, phospho (ser483/S484)	Rb	Pab	+					+					100 µg	BH9900	22
WEE1, C-term	Rb	Pab	+					+	+	+			100 µg	GL7630	21
WEE1, middle region	Rb	Pab	+	+				+	+	+			100 µg	GL7640	21
West Nile Virus	Ms IgG2b	WN-A								+			1 ml	R73510	15
West Nile Virus	Ms IgG2a	WN-B								+			1 ml	R73570	15
West Nile Virus	Ms IgG1	WN-C								+			1 ml	R73920	15
Wilm's Tumor	Rb	Pab	+	+	+			+	+		+		500 µl	GH5373	15
Wilm's Tumor	Ms IgG1	6F-H2	+					+					500 µl	V06630	5
Wilm's Tumor	Ms IgG1	WLM04	+					+				IF	500 µl	993921	5
Wilm's Tumor Protein	Ms IgG1	MWT6	+					+	-			IF	500 µl	N86070	5
Wilm's Tumor Protein	Ms IgG1	MWT12	+					+	+			IF	500 µl	N86090	5
WIPI, see PPM1D															
WISP1 Center	Rb	Pab	+							+			100 µg	GL1620	3-5-22
WISP2 Center	Rb	Pab	+					+		+			100 µg	GL1630	3-5-22
WISP2 Center	Rb	Pab	+							+			100 µg	GL1640	3-5-22
WNK1	Rb	Pab	+		+			+		+			100 µg	GW3050	21-12
WNK1, <i>Boot Camp</i>	Rb	Pab	(+)	(+)	(+)								100 µg	GP7360	21-12
WNK1, C-term	Rb	Pab	+					+		+			100 µg	GL7650	21-12
WNK1, middle region	Rb	Pab	+							+			100 µg	GL7660	21-12
WNK2	Rb	Pab	+					+		+			100 µg	GW3060	21-12
WNK3	Rb	Pab	+					+		+			100 µg	GW3070	21-12
WNK4	Rb	Pab	+	(+)	(+)			+		+			100 µg	GW3080	21-12
WNK4	Rb	Pab	+	+	+			+					250 µl	AW9460	21-12
Wnt-1	Rb	Pab	+	+	+			+	+				500 µl	BB6391	3-5
WRN	Rb	Pab	+					+			+		100 µg	GR3740	10
WRN	Rb	Pab	+					+			+		100 µg	GR4080	10
WT1	Rb	Pab	+					+					100 µl	GS1390	10-3-5
X															
XAGE-1	Rb	Pab	+					+			+		100 µl	AW9470	5
Xanthine Oxidase	Rb	Pab					Bv						1 ml	P61400	12
Xanthine Oxidase	Rb	Pab					Bv			+		IEP	50 mg	N92010	10
Xanthine Oxidase	Rb	Pab					Bv	+	+				2 ml	O25550	10
Xanthine Oxidase	Ms IgG1	145.4	+	+	+		Rb	+					500 µl	N86140	10-12
Xanthine Oxidase	Ms IgM	107-5	+	+	+		Rb	-	+				500 µl	N86180	10-12
Xanthine Oxidase -HRP	Rb	Pab					Bv			+			20 mg	N97860	10
Xeroderma pigmentosum type G	Ms	Mab	+					+		+			100 µg	C76860	10
XIAP	Rb	Pab	+	+	+			+					50 µg	FX6660	3
X-linked inhibitor of Apoptosis	Rb	Pab	+					+		+			100 µg	AA7950	12-18-3
XLKD1, C-term	Rb	Pab	+					+		+			100 µg	GK6260	5-17
XLKD1, N-term	Rb	Pab	+					+		+			100 µg	GK6250	5-17
XPA	Ms IgG2a	12F5	+					+	+				500 µl	N86210	10
XPA-binding protein 2	Rb	Pab						+					100 µg	AW8350	
XPF	Ms	6D12	+					+					100 µg	S53010	3
XPF	Ms	218	+					+					100 µg	S53020	3
XPF	Ms	219	+					+					100 µg	S53030	3
XPF	Ms IgG2	Inquire	+					+	+				500 µl	Q45260	10
XPF	Ms IgG2b	51	+					+	-				500 µl	S38050	10
XPG	Ms IgG2a	8H7	+					+				IF	500 µl	N86270	10
XPR1	Rb	Pab	+					+					50 µl	FT2830	22
XPR1	Rb	Pab	+					+					50 µl	FT2840	22
XRCC1	Ms	Mab IgG2b	+					+			+		100 µg	GW3090	10

Species legend : Bd : Bird, Bv : Bovine, Ck : Chicken or Hen, Ct : Feline, Dg : Canine, Dr : Drosophila, Eq : Equine, F : Fish, Fr : Frog, Ft : Ferret, GP : Guinea Pig, Gi : Goat, Hm : Hamster, Hrs : Horse, Hu : Human, Ko : Kangaroo, M : Mammalian, Mi : Mink, Mk : Monkey, Ms : Mouse, Ne : Nematode, Op : Opossum, Pl : plant, Ql : Quail, Rb : Rabbit, Rt : Rat, Sh : Sheep, Sw : Porcine, Sy Hm : Syrian Hamster, Xe : Xenopus, Ye : Yeast

Size : Size indicated in bold means several sizes and formats are available (sample size or bigger size, unpurified neat serum, without azide or BSA, positive control...) : contact us for more detail

Application legend : Bk : Blocking, CD : Cell detection, Ch : ChIP, COA : ELISA capture, Db : Dot Blot, DD : Double diffusion, EL : ELISA detection, EM : Electron Microscopy, FCM : Flow Cytometry, FIA : FluoroImmunoAssay, GS : Gel (super)shift, HA : Hemagglutination/Latex agglutination, ICC : ImmunoCytoChemistry, IEP : Immunoelectrophoresis, IF : Immunofluorescence, IHC : ImmunoHistoChemistry, IP : Immunoprecipitation/Immunopurification, ISH : In Situ Hybridization, KA : Kinase assay, LF : Lateral flow, Neph : Nephelometry, Neut : Neutralizing, RIA : RadioImmunoassay, RID : Radial Immunodiffusion, SB : Southern Blot, TIA : Turbidimetry

Name : Prefixes as 'alpha', 'D1-', 'Pro-',... are not considered for the alphanumerical sorting, and often included after the main name.

(+) : Expected species cross-reactivities based on immunogen sequence homology _ Expected application suitability.

Primary Antibodies & Ags

Alphabetical Listing

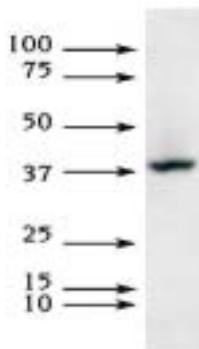
Name	Host - Isotype	Clone	Species Reactivity				Application							Size	Cat.#	Research Area	
			Hu	Ms	Rt	Other	WB	IHC	ICC	EL	FC	IP	Other				
XRCC1	Rb	Pab	+				+	+				+			100 µg	AL0370	10
XRCC1	Ms	144	+				+								100 µg	S53000	10
XRCC1	Ms IgG2a	144	+				+	+				+			500 µl	S38100	10
XRCC1	Ms IgG2b	33-2-5	+		+		+	+				+			500 µl	839111	10
XRCC1	Rb	Pab	+	(+)	(+)	(Hm)						+			400 µl	GP8190	10
XRCC1	Rb	Pab	+				+	+				+			100 µl	AW8370	10
XRCC1 -Agarose	Rb	Pab										+			100 µg	AL2000	10
XRCC1, phospho (ser461)	Rb	Pab	+					+							100 µg	GR5590	10-21
XRCC1, phospho (ser475)	Rb	Pab	+					+							100 µg	GR3500	10-21
XRCC1, phospho (ser485/Thr488)	Rb	Pab	+					+							100 µg	GR6060	10-21
XRCC1, pSer518/Thr519/Thr523	Rb	Pab	+					+							100 µg	GR4760	10-21
XRCC2	Rb	Pab	+					+	+						500 µl	S46686	10
XRCC2	Ms IgG1	7B7/3	+	+				+							100 µl	AW6080	10
XRCC2	Rb	Pab	+					+	+						500 µl	S46690	10
XRCC2	Rb	Pab	+					+	+						500 µl	S46744	10
XRCC3	Ms IgG1	10F1/6	+					+							100 µl	AW6090	10
XRCC3	Rb	Pab	+					+	+						500 µl	S46750	10
XRCC3	Rb	Pab	+					+							100 µl	AW8380	10
XRCC4	Ms	Pab	+					+							50 µl	AW6150	10

Y

YANK2, C-term	Rb	Pab	+					+	+						100 µg	GL2630	21
Yersinia pestis	Ms IgG1	M996145							+						1 mg	P48300	15
Yersinia pestis F1 Antigen	Ms IgG1	YPF19						+	+			IF			1 mg	994510	15
Yersinia pestis F1 Antigen -Biotin	Ms IgG1	YPF19													1 mg	GG3650	15
Yersinia pestis V Antigen	Ms IgG1	Va52						+	+						1 mg	BM0010	15
Yersinia pestis V Antigen	Ms IgG1	Va13						+	+						1 mg	GG3660	15
Yersinia pestis V Antigen	Ms IgG1	Va22						+	+						1 mg	GG3670	15
Yersinia pestis V Antigen	Ms IgG1	Va48						+	+						1 mg	BM0100	15
Yersinia pestis V Antigen	Ms IgG1	Va68						+	+						1 mg	BM0120	15
YES, N-term	Rb	Pab	+	+				+	+	+					100 µg	GL5190	21
YSK, C-term	Rb	Pab	+					+	+	+					100 µg	GL6100	21
YWHAB, C-term	Rb	Pab	+					+	+	+					100 µg	GL8400	21
YWHAB, N-term	Rb	Pab	+					+	+	+					100 µg	GL8390	21
YWHAZ, C-term	Rb	Pab	+					+	+	+					100 µg	GL8350	21
YY1	Rb	Pab	+	+	+	Mk		+							100 µl	GS1710	10
YY1, middle region	Rb	Pab	+					+	+	+					100 µg	GK9490	10
YY1, N-term	Rb	Pab	+					+	+	+					100 µg	GK9480	10
YY1, Nushift	Rb	Pab	+	+	+							GS			17 Rxns	GS0600	10

A.238

XRCC3 (x-ray cross complementing)



- ◆ Specificity : XRCC3 (x-ray cross complementing)
- ◆ Catalog number : **AW6090**
- ◆ Host and isotype : Mouse IgG1
- ◆ Species reactivity : Human(Mouse negative) does not cross-react with Rad51B, Rad51C, Rad51D, Rad51, or XRCC2 in WB
- ◆ Applications and suggested dilution :
 - Western blotting 1:1000 (detects a band of ~38kDa)
 - Immunofluorescence 1:500

Key References :

- General References :**
- Schild, D., et al. Evidence for simultaneous protein interactions between human Rad51 paralogs. *J. Biol. Chem.* 275(22):16443-9, 2000. (Human)
 - Brenneman, M.A., et al. XRCC3 is required for efficient repair of chromosome breaks by homologous recombination. *Mutation Res.* 459(2):89-97, 2000. (Hamster)
- Product Specific References :**
- Forget, AL. et al. XRCC3 is recruited to DNA double strand breaks early and independent of Rad51. *J. of Cell. Biochem.* 93: 429-436, 2004. [Immunofluorescence]
 - Fan, R., et al. Defective Strand Break Repair after DNA Damage in Prostate Cancer Cells: Implications for Genetic Instability and Prostate Cancer Progression. *Cancer Res.* 64: 8526-8533, 2004.

XRCC3 detected in HEK293 lysates using a 1:1,000 dilution of Ab AW6090. Photo courtesy of B.T. Bennett & K. Knight of University of Massachusetts Medical School.