

# Primary Antibodies & Ags

## Alphabetical Listing

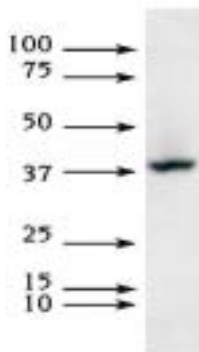
Name	Host - Isotype	Clone	Species Reactivity				Application							Size	Cat.#	Research Area	
			Hu	Ms	Rt	Other	WB	IHC	ICC	EL	FC	IP	Other				
XRCC1	Rb	Pab	+				+	+				+			100 µg	AL0370	10
XRCC1	Ms	144	+				+								100 µg	S53000	10
XRCC1	Ms IgG2a	144	+				+	+				+			500 µl	S38100	10
XRCC1	Ms IgG2b	33-2-5	+		+		+	+				+			500 µl	839111	10
XRCC1	Rb	Pab	+	(+)	(+)	(Hm)						+			400 µl	GP8190	10
XRCC1	Rb	Pab	+				+	+				+			100 µl	AW8370	10
XRCC1 -Agarose	Rb	Pab										+			100 µg	AL2000	10
XRCC1, phospho (ser461)	Rb	Pab	+					+							100 µg	GR5590	10-21
XRCC1, phospho (ser475)	Rb	Pab	+					+							100 µg	GR3500	10-21
XRCC1, phospho (ser485/Thr488)	Rb	Pab	+					+							100 µg	GR6060	10-21
XRCC1, pSer518/Thr519/Thr523	Rb	Pab	+					+							100 µg	GR4760	10-21
XRCC2	Rb	Pab	+					+	+						500 µl	S46686	10
XRCC2	Ms IgG1	7B7/3	+	+				+							100 µl	AW6080	10
XRCC2	Rb	Pab	+					+	+						500 µl	S46690	10
XRCC2	Rb	Pab	+					+	+						500 µl	S46744	10
XRCC3	Ms IgG1	10F1/6	+					+							100 µl	AW6090	10
XRCC3	Rb	Pab	+					+	+						500 µl	S46750	10
XRCC3	Rb	Pab	+					+							100 µl	AW8380	10
XRCC4	Ms	Pab	+					+							50 µl	AW6150	10

### Y

YANK2, C-term	Rb	Pab	+					+	+						100 µg	GL2630	21
Yersinia pestis	Ms IgG1	M996145							+						1 mg	P48300	15
Yersinia pestis F1 Antigen	Ms IgG1	YPF19						+	+			IF			1 mg	994510	15
Yersinia pestis F1 Antigen -Biotin	Ms IgG1	YPF19													1 mg	GG3650	15
Yersinia pestis V Antigen	Ms IgG1	Va52						+	+						1 mg	BM0010	15
Yersinia pestis V Antigen	Ms IgG1	Va13						+	+						1 mg	GG3660	15
Yersinia pestis V Antigen	Ms IgG1	Va22						+	+						1 mg	GG3670	15
Yersinia pestis V Antigen	Ms IgG1	Va48						+	+						1 mg	BM0100	15
Yersinia pestis V Antigen	Ms IgG1	Va68						+	+						1 mg	BM0120	15
YES, N-term	Rb	Pab	+	+				+	+	+					100 µg	GL5190	21
YSK, C-term	Rb	Pab	+					+	+	+					100 µg	GL6100	21
YWHAB, C-term	Rb	Pab	+					+	+	+					100 µg	GL8400	21
YWHAB, N-term	Rb	Pab	+					+	+	+					100 µg	GL8390	21
YWHAZ, C-term	Rb	Pab	+					+	+	+					100 µg	GL8350	21
YY1	Rb	Pab	+	+	+	Mk		+							100 µl	GS1710	10
YY1, middle region	Rb	Pab	+					+	+	+					100 µg	GK9490	10
YY1, N-term	Rb	Pab	+					+	+	+					100 µg	GK9480	10
YY1, Nushift	Rb	Pab	+	+	+							GS			17 Rxns	GS0600	10

A.238

## XRCC3 (x-ray cross complementing)



- ◆ Specificity : XRCC3 (x-ray cross complementing)
- ◆ Catalog number : **AW6090**
- ◆ Host and isotype : Mouse IgG1
- ◆ Species reactivity : Human(Mouse negative) does not cross-react with Rad51B, Rad51C, Rad51D, Rad51, or XRCC2 in WB
- ◆ Applications and suggested dilution :
  - Western blotting 1:1000 (detects a band of ~38kDa)
  - Immunofluorescence 1:500

#### Key References :

- General References :**
- Schild, D., et al. Evidence for simultaneous protein interactions between human Rad51 paralogs. *J. Biol. Chem.* 275(22):16443-9, 2000. (Human)
  - Brenneman, M.A., et al. XRCC3 is required for efficient repair of chromosome breaks by homologous recombination. *Mutation Res.* 459(2):89-97, 2000. (Hamster)
- Product Specific References :**
- Forget, AL. et al. XRCC3 is recruited to DNA double strand breaks early and independent of Rad51. *J. of Cell. Biochem.* 93: 429-436, 2004. [Immunofluorescence]
  - Fan, R., et al. Defective Strand Break Repair after DNA Damage in Prostate Cancer Cells: Implications for Genetic Instability and Prostate Cancer Progression. *Cancer Res.* 64: 8526-8533, 2004.

XRCC3 detected in HEK293 lysates using a 1:1,000 dilution of Ab AW6090. Photo courtesy of B.T. Bennett & K. Knight of University of Massachusetts Medical School.