

# Reactor-Ready Mini

## Jacketed Lab Reactor

Advion Interchim  
scientific®

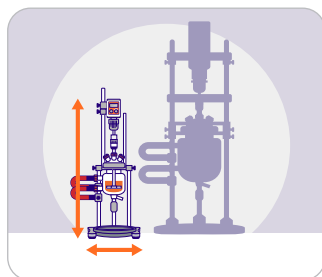
radleys  
accelerating chemistry



Small Footprint.  
Precise Control.  
Confident Scale-up.

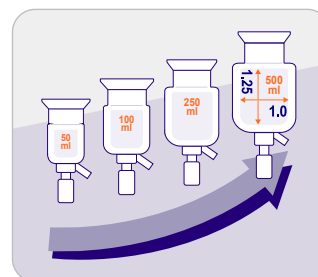
# What makes Reactor-Ready Mini different?

## Smart features For small-scale chemistry



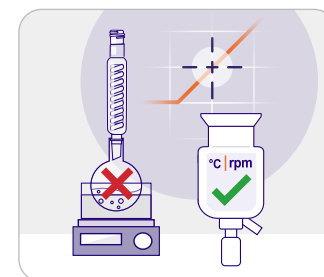
### Small footprint, big performance

Maximise your fumehood space while enjoying the performance of a full-size jacketed lab reactor.



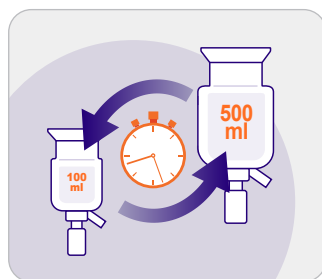
### Scalable volumes from 50 to 500 ml

Same vessel geometry across the range (and beyond) for confident scaling up or down.



### Precise control at a small scale

Swap round bottom flasks for a jacketed reactor with accurate temperature control & efficient stirring.



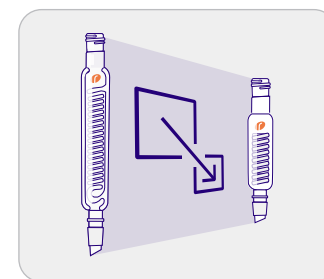
### Rapid vessel exchange

Switch effortlessly between vessel sizes for different scales or projects.



### Greener and more cost-effective

Reduce your solvent and material use and waste. Save money and work more sustainably.



### Miniaturisation throughout

Dedicated 'mini' glassware and accessories matched to the smaller scale of the reactor.

# Reactor-Ready Mini

## At a glance

### Compact footprint

- 270 mm wide
- 339 mm deep
- 824 mm high



### Patented stirrer coupling

- Drop-in and self-aligning
- Tool-free
- Minimises PTFE shedding



### Wide range of accessories

- Including condensers, stirrer shafts, funnels, adapters etc.

### Glass and PTFE lids

- Vacuum-tight sealing with FEP-encapsulated O-ring
- DN60 flange across all vessel sizes



### Compact stirrer support

- Simple, tool-free setup
- Accepts a range of compact overhead stirrers



### PTFE vessel clamp

- Rapid vessel exchange
- Quick release and tool-free
- No metal-on-glass contact



### PEEK hose couplings

- Quick release - connect in seconds without tools
- Chemically resistant PEEK
- Lightweight and metal-free
- Jacket temperature range -70 °C to +230 °C



### Wide range of vessels

- 50 ml to 500 ml
- Vacuum jacketed option
- Vessel shape mimics plant scale geometry
- DN60 flange across the range



### Zero dead space drain valve

- 15 mm bore - ideal for draining slurries
- Glass filled PTFE piston with replaceable FEP O-rings
- Design prevents over-tightening that can cause breakage



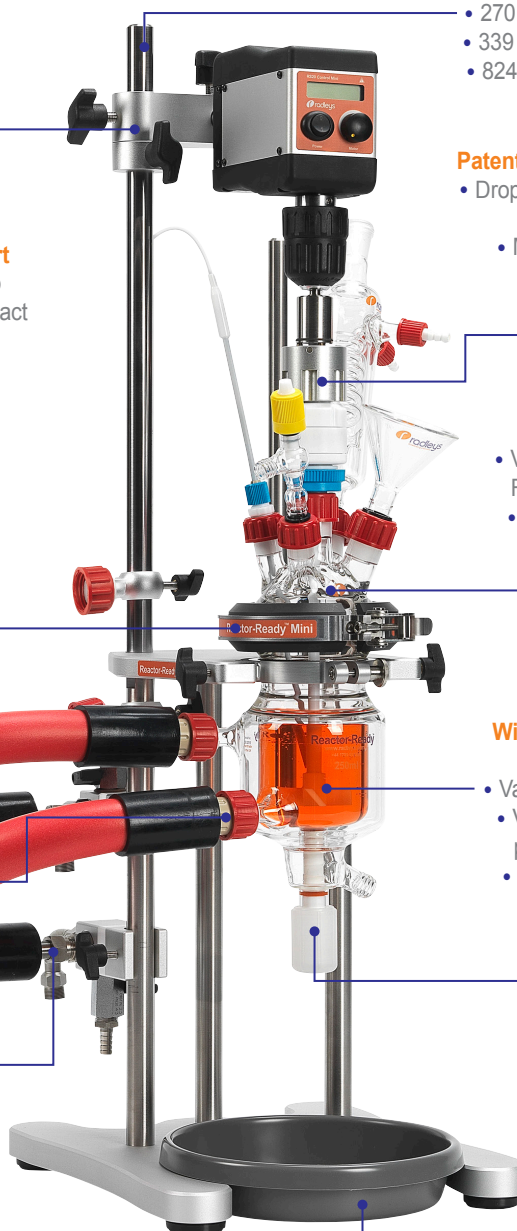
### Draindown manifolds

- Rapid thermal fluid draindown
- Mess-free vessel exchange
- Manifolds support hoses, eliminating stress on the vessel sidearms



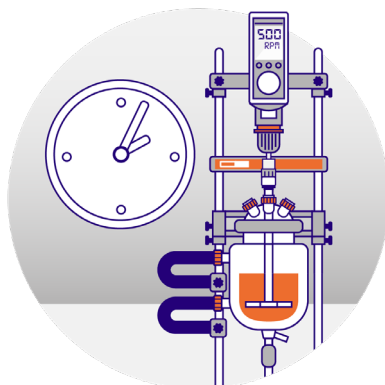
### U-shaped base plate

- Compact and sturdy
- Polypropylene drip tray





# Why choose Reactor-Ready Jacketed Lab Reactors?



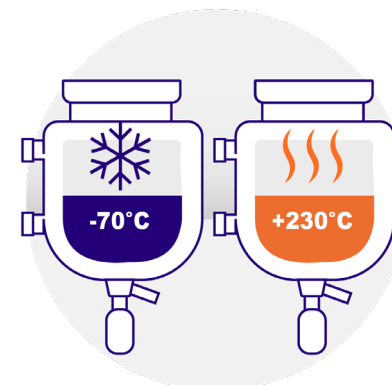
## Compact and flexible for busy labs

Save time, space and money with a single workstation. Swap vessels between projects in minutes and without tools.



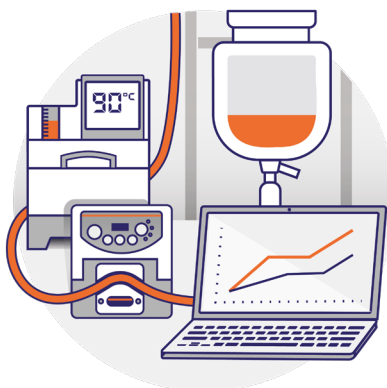
## Scale without compromise

From 50 ml to 35 litres, the Reactor-Ready range lets you scale your chemistry easily, with a system for every stage.



## Precise temperature control

Accurate and consistent temperature control thanks to optimised vessel geometry and jacket design.



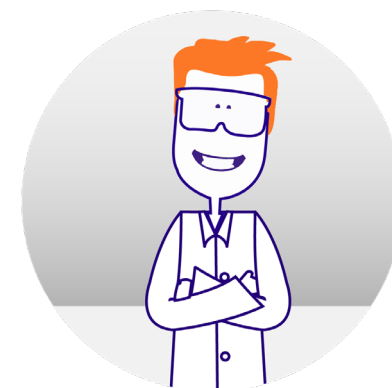
## Control multi-device reactions

Effortlessly integrates with AVA software for safe and precise automated reaction control and data logging.



## Proven success worldwide

Over 3,000 systems installed around the world. Trusted by top pharmaceutical companies.



## Expert support at every step

Our experienced team offers practical advice to help accelerate your chemistry.



# The Reactor-Ready range



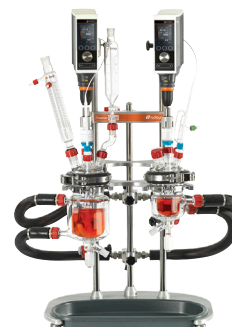
Reactor-Ready Mini



Reactor-Ready Flex



Reactor-Ready Filter



Reactor-Ready Duo



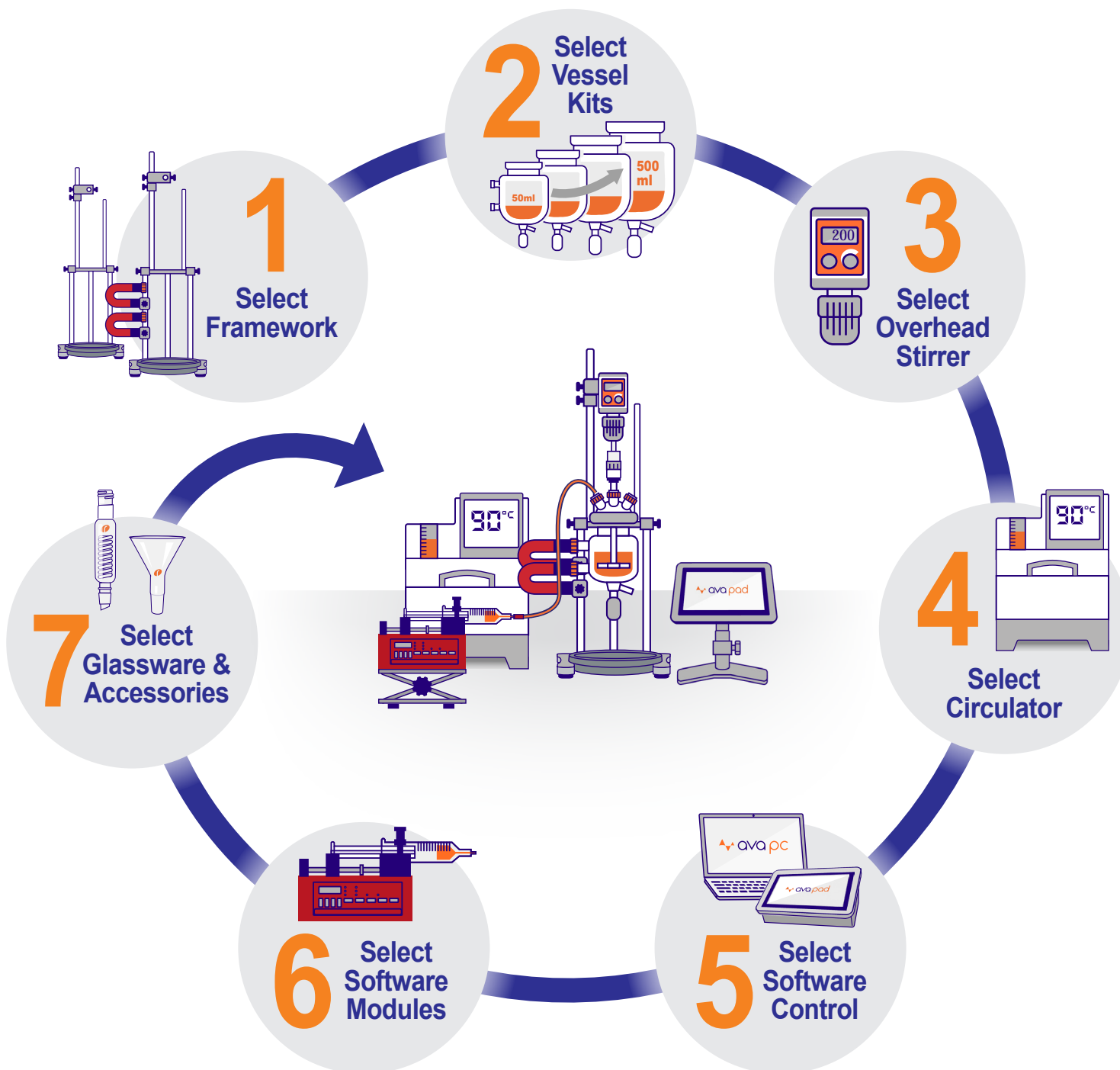
Reactor-Ready Pilot

Vessel volume range	50 ml to 500 ml	100 ml to 5 L	1 L to 2 L	100 ml to 5 L	5 L to 35 L
Vessels per framework	1	1	1	2	1
Temp Range	-70 °C to +230 °C	-70 °C to +230 °C	-30 °C to +180 °C	-70 °C to +230 °C	-70 °C to +230 °C
Rapid vessel exchange	✓	✓	✓	✓	✓
Dimensions (WxDxH)	270 x 339 x 824 mm	456 x 570 x 1103 mm	456 x 570 x 1208 mm	600 x 485 x 1103 mm	540 x 650 x 1884 mm
Lid Flange Size	DN60	DN100	DN100	DN100	DN200
Synthesis	✓	✓	✓	✓	✓
Filtration	✗	✗	✓	✗	✗
Reflux / Distillation	✓	✓	✓	✓	✓
Software Control	Optional	Optional	Optional	Optional	Optional

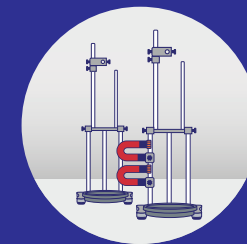
# It's easy to configure your Reactor-Ready Mini

## 7 simple steps

1. Select Framework
2. Select Vessel Kits
3. Select Overhead Stirrer
4. Select Circulator
5. Select Software Control
6. Select Software Modules
7. Select Glassware & Accessories



# 1. Select Framework



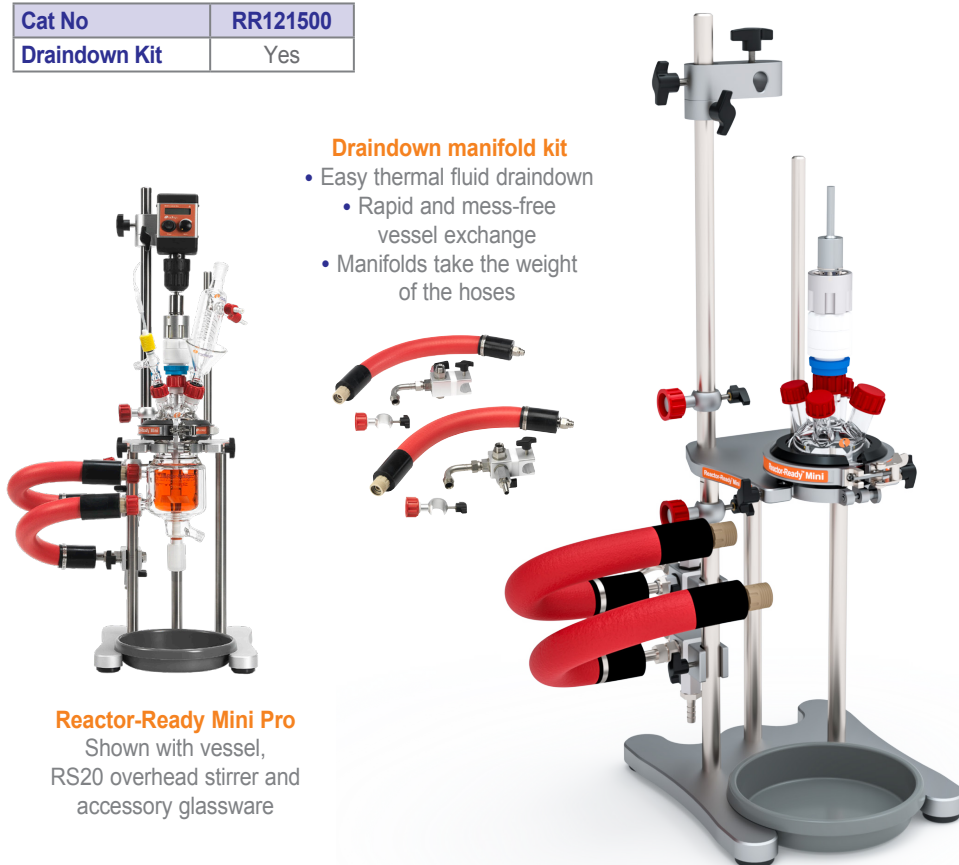
## Reactor-Ready Mini Pro

With draindown manifold for rapid, mess-free vessel exchange

Cat No	RR121500
Draindown Kit	Yes

### Draindown manifold kit

- Easy thermal fluid draindown
  - Rapid and mess-free vessel exchange
- Manifolds take the weight of the hoses



### Reactor-Ready Mini Pro

Shown with vessel, RS20 overhead stirrer and accessory glassware

## Reactor-Ready Mini Starter

For more limited budgets, connect your vessel directly to your circulator

Cat No	RR121501
Draindown Kit	No

### Tool-free hose connectors

- Connect your vessel directly to your circulator hoses
- Chemically resistant PEEK sidearm connectors with no glass-to-metal contact
- Choose between M16 & NW12
- Must be ordered separately



### Reactor-Ready Mini Starter

Shown with vessel, RS20 overhead stirrer and accessory glassware

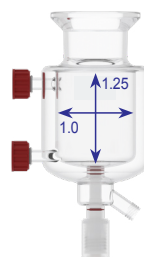


## 2. Select Vessel Kits



### Vessel highlights:

- Scale-up-friendly geometry with 1.25:1 height-to-diameter ratio and dish-shaped base
- Wide-bore tangential sidearms for enhanced heat transfer
- DN60 polished flat flange ensures a reliable, vacuum-tight seal
- 15 mm bore minimises sample hold-up and is ideal for slurries



### Vessel kits make ordering vessels and accessories simple

Reaction Vessel Kits include:

- Glass reaction vessel with sidearm couplings
- PTFE turbine stirrer shaft (other types available separately)
- Pt1000 PTFE temperature probe with LEMO connector
- PTFE temperature probe adapter



### Single Jacketed Vessel Kits



50 ml



100 ml



250 ml



500 ml

Cat No	RR120060	RR120063	RR120066	RR120069
--------	----------	----------	----------	----------

### Vacuum Jacketed Vessel Kits



50 ml



100 ml



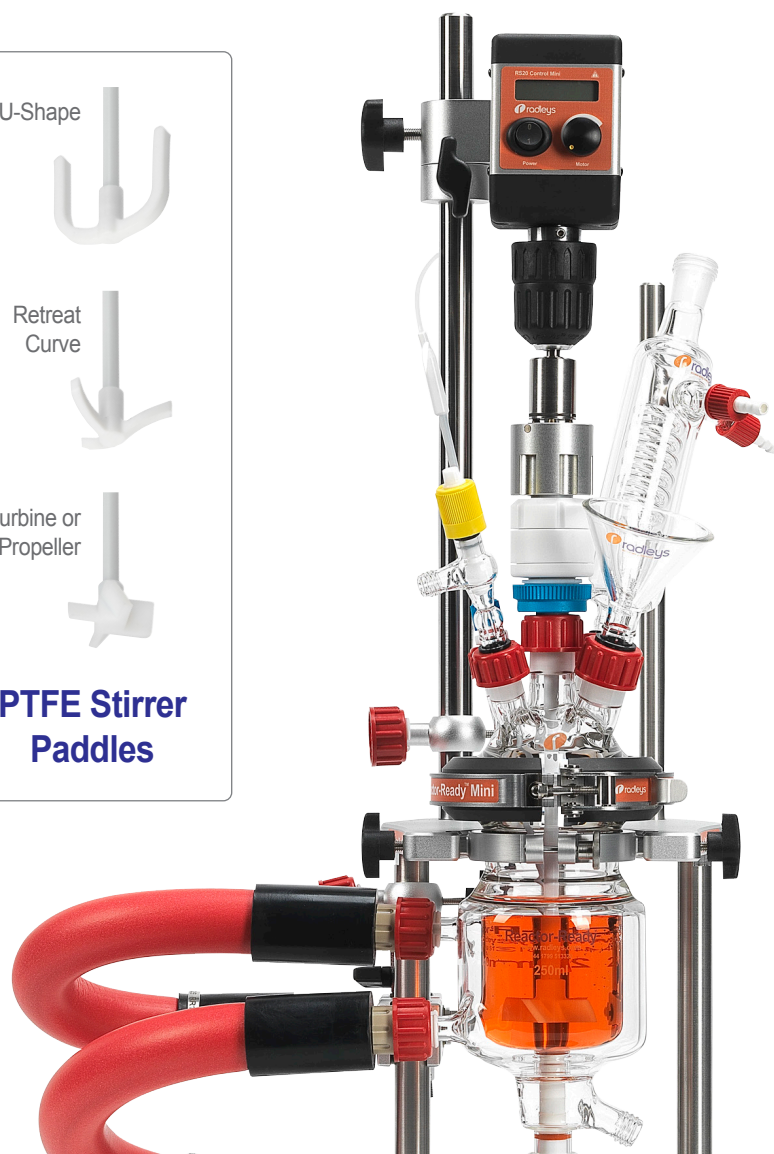
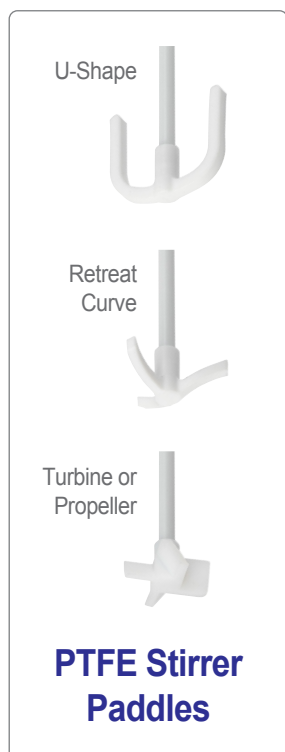
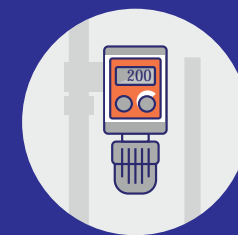
250 ml



500 ml

Cat No	RR120061	RR120064	RR120067	RR120070
--------	----------	----------	----------	----------

### 3. Select Overhead Stirrer



**Radleys  
RS20 Control  
Mini**



**Heidolph  
Hei-TORQUE  
Core**

Lightweight and most compact stirrer with RS232 connectivity.

Most powerful option. Ideal for larger volumes and mixing suspensions with its turbo function.

Cat No	RR150060	501-60410-00
Speed *	50 - 2,000 rpm	20 - 2,000 rpm
Digital Display	LCD	LCD
Torque	20 Ncm	40 Ncm
Torque Display	No	No
Chuck	Tool-free chuck	Tool-free chuck
Software Control	Yes (RS232)	No
Dimensions WxDxH	68 x 130 x 165 mm	70 x 195 x 282 mm
Weight	1.3 kg	2.3 kg

\* The maximum recommended speed for Reactor-Ready Mini is 500 rpm for continuous use, and 800 rpm for short periods.

## 4. Select Circulator



**Huber  
CC-K6**



**Huber  
Ministat 230**



**Huber  
Ministat 240**



**Huber  
Petite Fleur**



**Huber  
Unistat 705**

	Compact open bath unit suitable for less demanding applications	Open bath unit with good heating and cooling capability	The most popular Ministat, powerful and compact temperature control	The smallest Unistat, rapid temperature control for small and medium-sized vessels	Medium-sized Unistat for low temperatures
<b>Cat No</b>	<b>HB2008.0005.01</b>	<b>HB2015.0005.01</b>	<b>HB2016.0005.01</b>	<b>HB1030.0001.01</b>	<b>HB1068.0019.01</b>
<b>Temperature Range</b>	-25 °C to +200 °C	-40 °C to +200 °C	-45 °C to +200 °C	-40 °C to +200 °C	-75 °C to +250 °C
<b>Example Performance (Process Temperature)</b>	250 ml vessel: 20 °C to 120 °C in < 20 min 120 °C to 20 °C in <45 min 20 °C to 0 °C in ~20 min	250 ml vessel: 20 °C to 130 °C in ~30 min 130 °C to 20 °C in 45 min 20 °C to -20 °C in 32 min -20 °C to 20 °C in ~20 min	Awaiting data	250 ml vessel: 20 °C to 150 °C in 30 min 150 °C to 20 °C in 35 min 20 °C to -20 °C in 23 min -20 °C to 20 °C in <20 min	250 ml vessel: Min. temp. achieved: -68 °C 20 °C to -60 °C in <40 min -60 °C to 20 °C in 16 min
<b>Heating capacity</b>	1.6 - 2.1 kW	1.6 - 2.1 kW	1.8 - 2.1 kW	1.6 - 2 kW	1.5 kW (16 A power supply)
<b>Cooling capacity</b>	0.15 kW @ 0 °C	0.38 kW @ 0 °C	0.55 kW @ 0 °C	0.45 kW @ 0 °C	0.65 kW @ 0 °C
<b>Connections</b>	M16	M16	M16	M16	M24





## 4. Select Circulator Accessories

Pick a side arm connector size for  
Reactor-Ready Mini Starter ONLY (not included)



**PEEK Vessel Side Arm Connectors**



**Lightweight Insulated Hoses**



**Insulated Hoses**

Cat No	RR121230	RR121233	RR121540	RR121541	HB9608	HB9609
Description	M16	NW12 Barb	M16 / 1 m, 10mm ID	M16 / 1.5 m, 10mm ID	M16 / 1 m, 12mm ID	M16 / 1.5 m, 12mm ID
Temperature Range	-70 °C to +230 °C	-70 °C to +230 °C	-70 °C to +230 °C	-70 °C to +230 °C	-50 °C to +200 °C	-50 °C to +200 °C



Cat No	RR121547	RR121517	HB55018	HB6161	HB6163
Description	Mini Hose Support Kit	M16/1 90° Adapter	Control Cable (3m) RS232 / PC	SilOil 5 litres M40.165/220.10	SilOil 5 litres M20.195/235.20
Additional Information	Support the weight of the hose when connecting directly to the vessel	M16/1 Female to M16/1 Male	For software control with AVA	Temperature range -40 °C to 220 °C	Temperature range -20 °C to 235 °C

## 5. Select Software Control



### AVA Pad Reactor Controller

Compact all-in-one controller

Cat No	RR20230
Device Connectivity	Integrated
User Interface	10" Touchscreen
Multiple Reactor Control	No

#### Suitable for

- Single Reactor
- Dual Reactor

#### 10" Touchscreen

- Graphical display
- Pinch zoom
- Supports USB keyboard & mouse

#### User Management

- Multiple user profiles
- Password protection per user

#### Integrated connections

- RS232 x 4
- Temp sensor ports x 2
- USB x 2
- Ethernet x 1
- HDMI Output x 1



Subscription  
**FREE**  
Software

**ava pad**



#### Fumehood compatible with two mounting options

- Control Pad Benchtop Stand
- Control Pad Support Rod - mount to a suitable stand or framework. (Not Reactor-Ready Mini framework)



### AVA PC Reaction Control Software

PC based software

Cat No	RR20308
Device Connectivity	Via separate hub
User Interface	Laptop PC
Multiple Reactor Control	Yes - up to 4

#### Suitable for

- Single Reactor
- Dual Reactor
- Multiple reactors (up to 4)

#### Laptop PC Controller

- Full keyboard
- 16" LCD Display

#### User Management

- Single user software
- Single password protection



Subscription  
**FREE**  
Software

#### Separate Data Hub connections

- RS232 Ports x 4
- Temp sensor ports x 2
- Ethernet x 1



**ava pc**



#### External to fumehood

- Remote connection to Data Hub via ethernet cable

Download  
**FREE** Demo  
Software  
[www.radleys.com](http://www.radleys.com)

## 5. Select Software Control



**AVA Pad  
Reactor  
Controller**

RR20230	RR20235	RR20510	RR20512	RR20518
Compact 10" Touch Screen all-in-one Reactor Controller	Upgrade to the latest version of the AVA Pad Reactor Software	To raise the Pad and provide adjustable viewing angle	To mount the pad to a suitable stand or framework. (Not suitable for mounting on Reactor-Ready Mini)	Mounting boss for use with RR20512 Control Pad Support Rod

**'Anytime' Upgrade**

**AVA Pad  
'Anytime' Software  
Upgrade**



**Control Pad  
Benchtop  
Stand**



**Control Pad  
Support  
Rod**



**Boss head  
15-25mm,  
8-12mm**



**AVA PC Reaction  
Control Software Kit**



**Driver Configuration  
Existing Category**



**Driver Configuration  
NEW Category**



**Data Hub  
4-port**



**Ethernet  
Switch**



**Ethernet  
Cable**

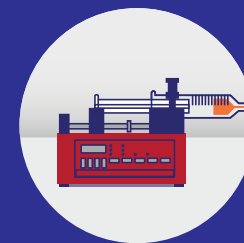


**4-port  
USB Hub**

RR20308	RR20217	RR20220	RR20200	RR20454	RR20212	RR20458
AVA PC Reaction Control Software, Laptop Controller, 4 Port Data Hub & 1 Year AVA Care Support	Driver Configuration Service - Existing Device Category	Driver Configuration Service - New Device Category	For the addition of more devices	To connect more than one Data Hub	Straight through 3 m	To connect more than one USB device



## 6. Select Software Modules



Reactor-Ready  
Mini Pro with  
AVA Pad



**pH  
Module**



**Syringe Pump  
Additions Module**



**Gravimetric  
Additions Module**

For the monitoring and logging of pH.  
Can be used for pH control when  
combined with an additions module.

For controlled, automated  
liquid dosing (by volume).  
Ideal for smaller volumes.

For controlled, automated liquid dosing  
(by mass). Ideal for larger volumes  
or continuous additions.

Cat No	RR20523	RR20505	RR20520
<b>Dosing</b>	pH control (acid or base dosing) possible with the addition of a syringe or peristaltic pump	0.1 µl - 60 ml	up to 500 ml
<b>Flow Rate</b>	n/a	up to 35 ml/min	up to 800 ml/min
<b>Continuous</b>	n/a	No	Yes
<b>Includes</b>	pH meter, cables, adapters and buffer solutions (pH probe not included)	Syringe pump, cable, and fixed additions tube kit	Peristaltic pump, balance, cables, tubing, adapters, bottle and stand
<b>Safety</b>	Safety feedback loops can be incorporated within the AVA Lab Control software to minimise exotherms.		

## 7. Select Glassware & Accessories



RR136050	RR121526	RR136060	RR136061	RR136331*	RR136333*
DN60 Glass 5 Neck Lid 3x B19, 2x B14 (supplied with Framework as standard)	FEP Encapsulated Silicone Vessel O-ring	DN60 PTFE 5 Neck Lid Assembly 3x B19, 1x B14, 1x 12mm	DN60 PTFE Lid with central B19 + 4 Threaded 1/2" NPT Ports	PTFE Lid Socket Adapters	PTFE Lid Compression Fittings

\*Other styles and/or sizes are available



RR140005	RR139158*	RR139157*	RR139163*	RR121544	RR139374
PTFE Temp Probe Adapter	Enlarging Adapters	Reducing Adapters	Glass Cone Stoppers	Boss Head	Universal Clamp

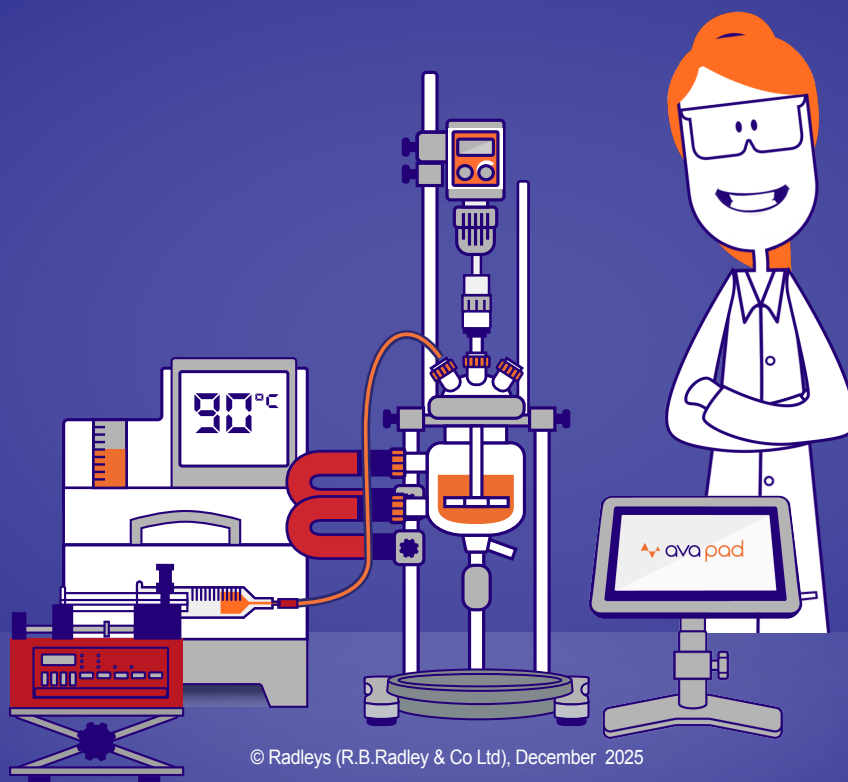


RR139191	RR139164	RR139166*	RR139162	RR139175*	RR139176	RR139161	RR139010	RR139170*
Reflux Divider Kit	Condenser	Dropping Funnels	Oil Bubbler	Valved Inlet Adapters	Swan Neck Adapter	Solid Additions Funnel	Right Angle Adapter	Run-Off Adapters

## Accelerating chemistry

Radleys provide innovative productivity tools helping chemists discover amazing things.  
Chemistry equipment for safer, cleaner, greener and more productive chemical research.

Visit [www.radleys.com](http://www.radleys.com) to see our full range of chemistry productivity tools.



© Radleys (R.B.Radley & Co Ltd), December 2025



Shire Hill, Saffron Walden,  
Essex, CB11 3AZ. United Kingdom.  
t: +44 1799 513320  
e: [sales@radleys.com](mailto:sales@radleys.com)

Interchim S.A.S - 211 bis avenue J.F. Kennedy - 03100 Montluçon - France - Tel. : +33 4 70 03 88 55 - email : [info@advion-interchim.com](mailto:info@advion-interchim.com)  
[www.advion-interchim.com](http://www.advion-interchim.com) - [www.interchim.com](http://www.interchim.com) - [www.flash-chromatography.com](http://www.flash-chromatography.com) - 1.548.000 € - RCS Montluçon 917 050 171 - APE 4669 B

Advion Interchim Scientific is the market-facing name of a partnership between Advion, Inc. and Interchim SAS, separate companies that have agreed to market and distribute their products together