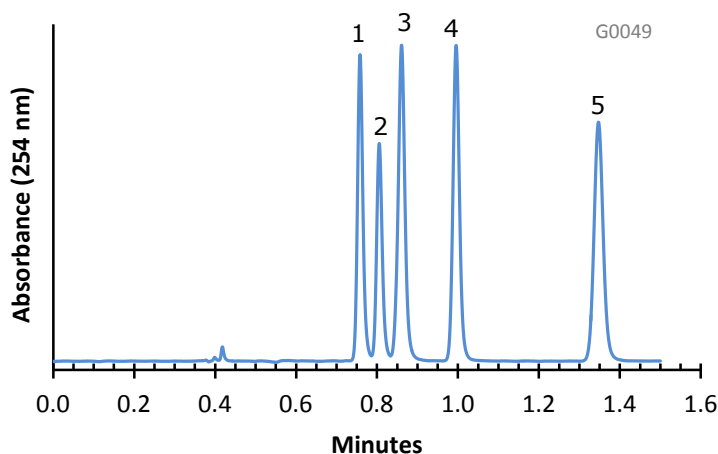


Separation of Antidepressants on HALO Penta-HILIC



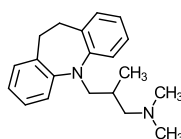
PEAK IDENTITIES:

1. Trimipramine
2. Amitriptyline
3. Doxepin
4. Nortriptyline
5. Amoxapine

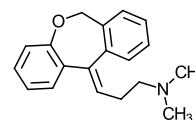
TEST CONDITIONS:

Column: 4.6 x 100 mm, HALO Penta-HILIC
 Part Number: 92814-605
 Mobile Phase: 7/93: A/B
 A= 0.1 M Ammonium formate, pH=3.5 (adj.)
 B= Acetonitrile
 Flow Rate: 2.5 mL/min.
 Pressure: 165 Bar
 Temperature: 30°C
 Detection: UV 254 nm, VWD
 Injection Volume: 0.5 µL
 Sample Solvent: 10/90: Water/Acetonitrile
 Response Time: 0.02 sec.
 Flow Cell: 2.5 µL semi-micro
 LC System: Shimadzu Prominence UFLC XR
 ECV: ~14 µL

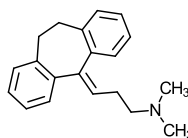
STRUCTURES:



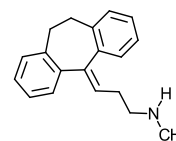
Trimipramine



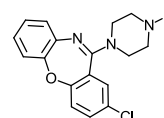
Doxepin



Amitriptyline



Nortriptyline



Amoxapine

Basic drugs such as antidepressants can be separated rapidly under HILIC conditions with good peak shape using HALO Penta-HILIC stationary phase.