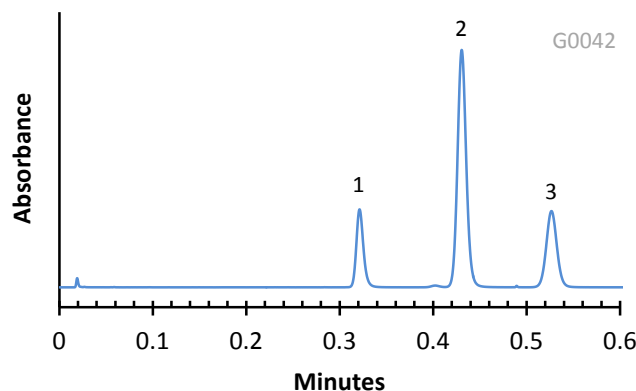


Application Note: 60-CB

Separation of Carbamate Pesticides on HALO ES-CN Phase



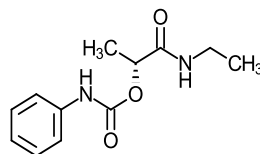
PEAK IDENTITIES:

1. Carbetamide
2. Propham
3. Chlorpropham

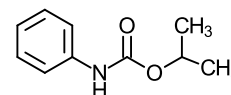
TEST CONDITIONS:

Column: 4.6 x 50 mm, HALO ES-CN
 Part Number: 92814-404
 Mobile Phase: 40/60-A/B
 A= Water
 B=Acetonitrile
 Flow Rate: 2.0 mL/min.
 Pressure: 165 Bar
 Temperature: 30 °C
 Detection: UV240 nm, VWD
 Injection Volume: 0.2 µL
 Sample Solvent: Acetonitrile
 Response Time: 0.02 sec.
 Flow Cell: 2.5 µL semi-micro
 LC System: Shimadzu Prominence UFLC XR
 Extra column volume: ~14 µL

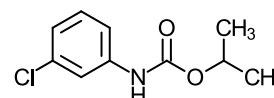
STRUCTURES:



Carbetamide



Propham



Chlorpropham

This separation illustrates a rapid HPLC determination of three carbamate pesticides on HALO ES-CN phase in just over half a minute. The unique Fused-Core technology allows the use of high flow rates at moderate pressures while retaining high efficiency.