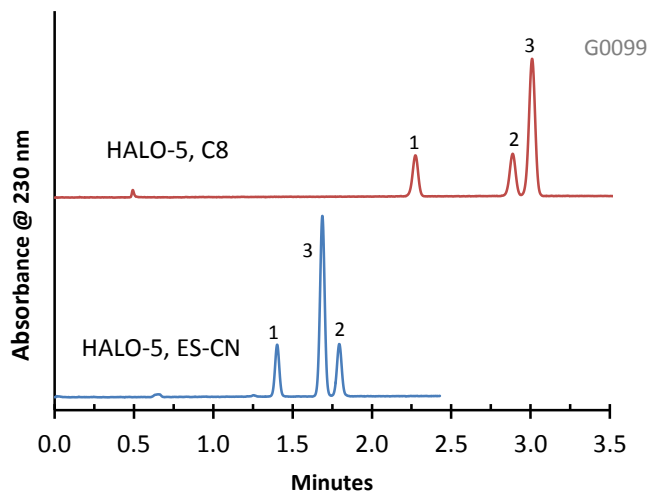


Separation of Stilbenes on HALO-5 C8 and ES-CN



PEAK IDENTITIES:

1. *trans*-Stilbene oxide
2. *trans*-Stilbene
3. *cis*-Stilbene

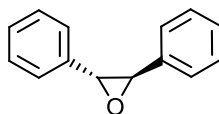
TEST CONDITIONS:

Column #1: 4.6 x 50 mm, HALO-5, C8
 Part Number: 95814-408
 Column #2: 4.6 x 50 mm, HALO-5, ES-CN
 Part Number: 95814-404
 Mobile Phase: A = Water, B = Acetonitrile
 Gradient:

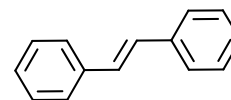
Time	%B
0.0	40
3.0	60
4.0	60

Flow Rate: 2.0 mL/min.
 Pressure: 120 Bar (starting)
 Temperature: 30°C
 Detection: UV 230 nm, VWD
 Injection Volume: 1.0 µL
 Sample Solvent: 50/50: water/acetonitrile
 Response Time: 0.02 sec.
 Flow Cell: 2.5 µL semi-micro
 LC System: Shimadzu Prominence UFLC XR
 ECV: ~14 µL

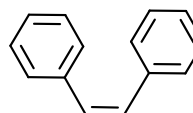
STRUCTURES:



trans-Stilbene Oxide



trans-Stilbene



cis-Stilbene

These two HALO-5 phases illustrate the difference in selectivity for the *cis*- and *trans*- isomers of these stilbene compounds and the utility of different bonded phases.