

Amplification Products for PCR and RT-PCR

PCR-Ready cDNA

PCR-Ready cDNA

The PCR-Ready cDNA is synthesized with an oligo(dT) anchor primer and subsequently converted into ds cDNA. All cDNAs have been tested using one of house-keeping genes and one of the low copy genes.

Each kit provides sufficient materials for 30 reactions, and contains PCR-Ready cDNA, 5' control primers, and 3' control primers.

Literature :

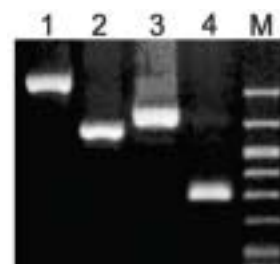
Frohman M.A., *PNAS*, **85**, 8998(1988)

Loh E.Y., *Science*, **243**, 217(1989)

Belyavski A., *Nucleic Acids Res*, **17**,2919(1989)

Description	Cat.#	Qty
Human adipose	T66670	30 x 50 µl
Human Adipose Fetal Tissue (FastClone™)	FM1260	30 x 30 µl
Human Brain (whole)	T66680	30 x 50 µl
Human Brain Fetal Tissue (FastClone™)	FM1200	30 x 30 µl
Human Breast	T66690	30 x 50 µl
Human Adult Colon Tissue (FastClone™)	FM1180	30 x 30 µl
Human Adult Gallbladder Tissue (FastClone™)	FM1010	30 x 30 µl
Human Gallbladder Fetal Tissue (FastClone™)	FM1210	30 x 30 µl
Human Heart	T66700	30 x 50 µl
Human Heart Fetal Tissue (FastClone™)	FM1270	30 x 30 µl
Human Small Intestine	T66710	30 x 50 µl
Human Intestine (small) Fetal Tissue (FastClone™)	FM1280	30 x 30 µl
Human Jurkat Cell Lines (FastClone™)	FM1330	30 x 30 µl
Human Kidney	T66720	30 x 50 µl
Human Kidney Fetal Tissue (FastClone™)	FM1240	30 x 30 µl
Human Leukemia (T-cell population) Cell Lines (FastClone™)	FM1380	30 x 30 µl
Human Liver	T66730	30 x 50 µl
Human Liver Fetal Tissue (FastClone™)	FM1220	30 x 30 µl
Human Lung	T66740	30 x 50 µl
Human Lung Fetal Tissue (FastClone™)	FM1230	30 x 30 µl
Human Lymph Node	T66750	30 x 50 µl
Human Adult Mammary gland Tissue (FastClone™)	FM1140	30 x 30 µl
Human Monocyte	T66760	30 x 50 µl
Human NK cells Cell Lines (FastClone™)	FM1370	30 x 30 µl
Human Ovary	T66770	30 x 50 µl
Human Ovary Fetal Tissue (FastClone™)	FM1300	30 x 30 µl
Human PBMC Cell Lines (FastClone™)	FM1340	30 x 30 µl
Human Pancrease	T66780	30 x 50 µl
Human Placenta	T66790	30 x 50 µl
Human Prostate	T66800	30 x 50 µl
Human Skeletal Muscle	T66810	30 x 50 µl
Human Spleen	T66820	30 x 50 µl
Human Spleen Fetal Tissue (FastClone™)	FM1250	30 x 30 µl
Human Splenocyte Cell Lines (FastClone™)	FM1350	30 x 30 µl
Human Stomach	T66830	30 x 50 µl
Human T-cell (Jurkat)	T66840	30 x 50 µl
Human T-cells Cell Lines (FastClone™)	FM1320	30 x 30 µl
Human Testis	T66850	30 x 50 µl
Human Testis Fetal Tissue (FastClone™)	FM1290	30 x 30 µl
Human Uterus	T66860	30 x 50 µl
Human Uterus Fetal Tissue (FastClone™)	FM1310	30 x 30 µl
Human Leukemia Chronic Myelogenous K562	T66870	30 x 50 µl
Human Leukemia Promyelocytic, HL-60	T66880	30 x 50 µl

Please contact us for Mouse and Rat.



RT-PCR performed using PCR-ready cDNA and following primer pairs :
 Lane 1 : BAC-1001/1007
 Lane 2 : BAC-1001/1004
 Lane 3 : BAC-1008/1007
 Lane 4 : BAC-1008/1004
 Lane M : GelMarker