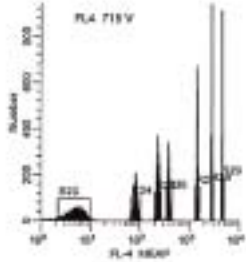
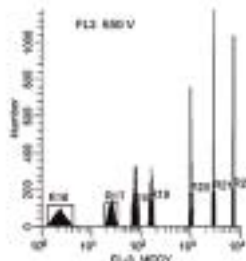
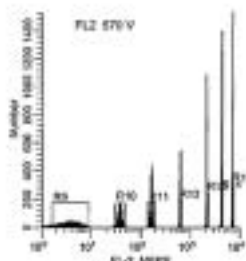
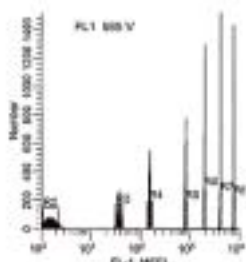


Immunologicals - Accessory reagents

Flow Cytometry Technique



VeriFCM FCM calibration micro spheres

VeriFCM™ 4 Channels Fluorescence Intensity Calibration Beads

- ◆ For flow cytometer and cell sorting
- ◆ Easy to use
- ◆ Single vial with three dyes
- ◆ Very stable

The VeriFCM 4 Channels Fluorescence Intensity Calibration beads provide a mixture of microspheres with multiple dyes in 7 fluorescent intensities. They are used to :

- Validate the instrument settings (calibration of the FL1/FITC, FL2/PE, FL3/PE-Cy5 and FL4/APC channels of the flow cytometer)
- Monitor flow cytometer stability
- Give relative fluorescence estimations of labeled cells.

Each intensity level is characterized by a MEFL value (approximate mean equivalent fluorochrome) for estimation of relative fluorescence intensities of labeled cells

Characteristics of VeriFCM 4 Channels :

~1.5 x 10⁷ particles/ml

Dyes : green (488/510 nm), orange (488/575 nm), Red (488,633,635/700 nm)

3 µm in diameter

Description	Cat.#	Qty
VeriFCM 4 Channels Fluorescence Intensity Calibration Beads	FP-BH3670	3 ml

VeriFCM Low Intensity Calibration Beads

The VeriFCM Cytometry Low Intensity Calibration Beads provide an equal mixture of 6µm diameter dimly labeled beads (green, orange and red dyes) and 6 µ diameter blank beads (no dye) and used to optimize the settings for dimly labeled cell analysis.

Characteristics of VeriFCM Cytometry Intensity Calibration Beads :

~4 x 10⁶ particles/ml

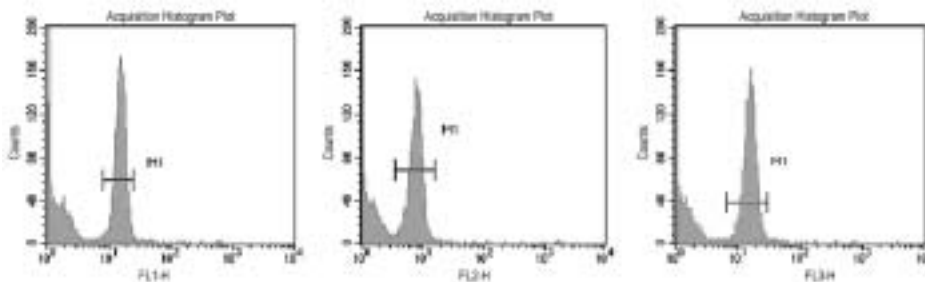
Dyes : green (488/510 nm), orange (488/575 nm), Red (488,633,635/700 nm)

6 µm in diameter

Description	Cat.#	Qty
VeriFCM Low Intensity Calibration Beads	FP-BN2730	3 ml

Data from FACSCalibur®, Becton Dickinson.
Results on different instruments may vary.

A.396



Typical data from a FACScan®, Becton Dickinson. Results on different instruments may vary.

VeriFCM Cytometry Alignment Beads

The VeriFCM Cytometry Alignment Beads contains uniform, 3 µm microspheres. They are used to perform or verify alignment of excitation and emission optics. Two products are available :

- ◆ VeriFCM 488 Cytometry Alignment Beads: excited by the 488 spectral line of the argon laser. They have broad emission, allowing them to be used to align the FL1(FITC), FL2(PE) and FL3(PE-Cy5) channels simultaneously
- ◆ VeriFCM 633 Cytometry Alignment Beads: excited with the 633 nm He-Ne laser, (can also be excited at 488 nm) they have maximum emission at 700 nm. They are used to align the FL4(APC).

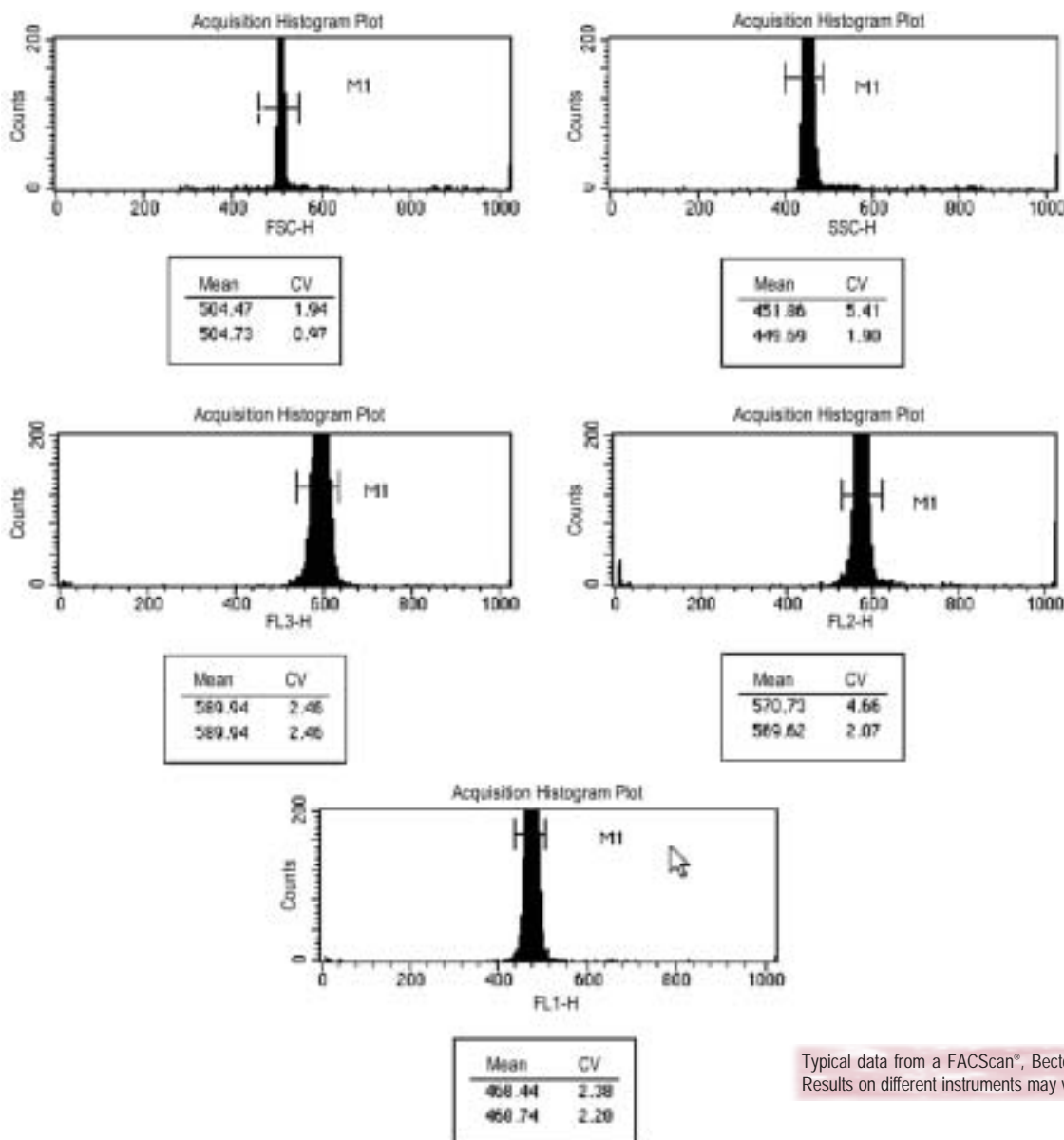
Characteristics of VeriFCM Cytometry Alignment Beads :

~5 x 10⁶ particles/ml

Dyes : green (488/510 nm), or Red (488,633,635/700 nm)

3 µm in diameter

Description	Cat.#	Qty
VeriFCM 488 Cytometry Alignment Beads	FP-BN2740	3 ml
VeriFCM 633 Cytometry Alignment Beads	FP-BN2750	3 ml



Typical data from a FACScan®, Becton Dickinson. Results on different instruments may vary.

Immunologicals - Accessory reagents

Flow Cytometry Technique

Primary Antibodies for FCM

We offer a complete line of monoclonal antibodies for human immune system research. These antibodies cover the range of the human CD Markers, and most of them are available in 4 different formats : Purified (with antibiotics), Biotinylated, FITC labeled, or R-PE labeled. All of the antibodies are suitable for use in Flow Cytometry, Frozen sections, and Immunoprecipitation, with many also suitable for use in Western Blot and Functional studies.

See page A401 for 2 and 3 Color FCM Cocktails.

	Purified Cat. #	Size	Biotin Cat. #	Size	FITC Cat. #	Size	R-PE Cat. #	Size	Other Type	Cat. #	Size
bcl-2 (bcl2/100)	AQ3200	100 µg	AR1660	100 µg	AR1810	120 t	AS2010	120 t			
CD1a (CB-T6)	AP8680	100 µg	AQ1150	100 µg	AQ1890	120 t	AR8140	120 t			
CD1b (SN13/K5-1B8)	AP8690	100 µg	AQ1160	100 µg	AQ1900	120 t	AR8150	120 t			
CD1c (M241)	AP8700	100 µg	AQ1170	100 µg	AQ1910	120 t	AR8160	120 t			
CD2 (T6.3)	AP9890	100 µg			AQ2760	100 t	AQ6340	100 t	APC	AR9370	100 t
CD2 (UMCD2/1E7E8)	AP8710	100 µg	AQ1180	100 µg	AQ1920	120 t	AR8170	120 t			
CD3 (M2AB)					AQ2770	100 t	AQ6350	100 t			
CD3 (M2AB)									APC	AR9380	100 t
CD3 (UCHT1)	AP4540	100 µg	AP8460	100 µg	AP8470	120 t	AQ9850	120 t	Cy5RPE	AR6920	100 t
CD3 (UCHT1)									APC	AQ9860	120 t
CD3 (UCHT1)									F(ab') ₂	AT3940	100 µg
CD4 (7E14)					AQ2780	100 t	AQ6360	100 t	APC	AR9390	100 t
CD4 (7E14)									Cy5RPE	AR6930	100 t
CD4 (Domain 1) (QS4120)	AP7600	100 µg	AP8720	100 µg	AP9620	120 t	AQ9870	120 t			
CD4 (Domain 2) (MT441)	AP7610	100 µg	AP8730	100 µg	AP9630	120 t	AQ9880	120 t			
CD5 (M28623)	AP9900	100 µg			AQ2790	100 t	AQ6370	100 t	APC	AR9400	100 t
CD5 (UCHT2)	AP7620	100 µg	AP8740	100 µg	AP9640	120 t	AQ9890	120 t			
CD6 (UMCD6/3F7B5)	AP8750	100 µg	AQ1190	100 µg	AQ1930	120 t	AR8180	120 t			
CD7 (3 Ale)	AP7630	100 µg	AP8760	100 µg	AP9650	120 t	AQ9900	120 t			
CD7 (MG34)	AP9910	100 µg			AQ2800	100 t	AQ6380	100 t			
CD8 (14)	AP7640	100 µg	AP8770	100 µg	AP9660	120 t	AQ9910	120 t			
CD8 (17D8)	AP9920	100 µg			AQ2810	100 t	AQ6390	100 t	APC	AR9410	100 t
CD8 (17D8)									Cy5RPE	AR6940	100 t
CD8 (17D8)	AP7650	100 µg	AP8780	100 µg	AP9670	120 t	AQ9920	120 t			
CD8a, mouse	AP4550	100 µg	AP7720	100 µg	AP7730	120 t	AQ6040	120 t			
CD9 (SN4/C3-3A2)	AP8790	100 µg	AQ1200	100 µg	AQ1940	120 t	AR8190	120 t			
CD10 (CALLA) (SN5c/L4-1A1)	AP8800	100 µg	AQ1210	100 µg	AQ1950	120 t	AR8200	120 t			
CD10 (RXB.14)					AQ2820	100 t					
CD11a (LFA-1) (38)	AP7660	100 µg	AP8810	100 µg	AP9680	120 t	AQ9930	120 t			
CD11a (OFYS)	AP9930	100 µg			AQ2830	100 t	AQ6400	100 t			
CD11b (F6.2)	AP9940	100 µg			AQ2840	100 t	AQ6410	100 t			
CD11b (MAC-1) (ICRF44)	AP7670	100 µg	AP8820	100 µg	AP9690	120 t	AQ9940	120 t			
CD11c (3.9)	AP7680	100 µg	AP8830	100 µg	AP9700	120 t	AQ9950	120 t			
CD13 (22A5)	AP8840	100 µg	AQ1220	100 µg	AQ1960	120 t	AR8210	120 t			
CD13 (E735.0)					AQ2850	100 t	AQ6420	100 t			
CD14 (FWKW.1)					AQ2860	100 t	AQ6430	100 t	APC	AR9420	100 t
CD14 (UCHM1)	AP7690	100 µg	AP8850	100 µg	AP9710	120 t	AQ9960	120 t			
CD15 (ARE.5)	AP9950	100 µg			AQ2870	100 t					
CD15 (Lewis x) (AHN1.1)	AP8860	100 µg	AQ5940	100 µg	AQ5990	120 t					
CD16 (3G8)	AP8870	100 µg	AQ1230	100 µg	AQ1970	120 t	AR8220	120 t	F(ab') ₂	AT3950	100 µg
CD16 (J5511)	AP9960	100 µg			AQ2880	100 t	AQ6440	100 t			
CD17 (Hu1y-m13)	AP8880	100 µg	AQ5950	100 µg	AQ6000	120 t					
CD18 (3EB)	AP9970	100 µg			AQ2890	100 t	AQ6450	100 t			
CD18 (IB4)	AP8890	100 µg	AQ1240	100 µg	AQ1980	120 t	AR8230	120 t	F(ab') ₂	AT3960	100 µg
CD19 (1G9)	AP9980	100 µg			AQ2900	100 t	AQ6460	100 t	APC	AR9430	100 t
CD19 (1G9)									Cy5RPE	AR6950	100 t
CD19 (BU12)	AP8900	100 µg	AQ1250	100 µg	AQ1990	120 t	AR8240	120 t			
CD20 (2H7)	AP8910	100 µg	AQ1260	100 µg	AQ2000	120 t	AR8250	120 t			
CD20 (DFA-7)							AQ6470	100 t			
CD21 (BU33)	AP8920	100 µg	AQ1270	100 µg	AQ2010	120 t	AR8260	120 t			
CD22 (5.8HK)					AQ2910	100 t	AQ6480	100 t			
CD22 (RFB4)	AP8930	100 µg	AQ1280	100 µg	AQ2020	120 t	AR8270	120 t			
CD23 (BU38)	AP8940	100 µg	AQ1290	100 µg	AQ2030	120 t	AR8280	120 t			
CD24 (BA-1)	AP8950	100 µg	AQ1300	100 µg	AQ2040	120 t					
CD25 (IL2-Ra, non-blocking) (7G7B6)	AP8960	100 µg	AQ1310	100 µg	AQ2050	120 t	AR8290	120 t			
CD25 (ITYV)	AP9990	100 µg			AQ2920	100 t	AQ6490	100 t	APC	AR9440	100 t
CD26 (202.36)	AP8970	100 µg	AQ1320	100 µg	AQ2060	120 t	AR8300	120 t			

Immunologicals - Accessory reagents

Flow Cytometry Technique

	Purified		Biotin		FITC		R-PE		Other	
	Cat. #	Size	Cat. #	Size	Cat. #	Size	Cat. #	Size	Type	Cat. # Size
CD26 (EUG-6)					AQ2930	100 t	AQ6500	100 t		
CD27 (DEN-3)					AQ2940	100 t	AQ6510	100 t		
CD27 (MT271)	AP8980	100 µg	AQ1330	100 µg	AQ2070	120 t	AR8310	120 t		
CD28 (B-23)					AQ2950	100 t	AQ6520	100 t	APC	AR9450 100 t
CD28 (stimulating) (ANC28.1/5D10)	AQ3210	100 µg	AR1670	100 µg	AR1820	120 t	AS2020	120 t	F(ab') ₂	AT3970 100 µg
CD29 (b1 Integrin) (4B7R)	AP8990	100 µg	AQ1340	100 µg	AQ2080	120 t	AR8320	120 t		
CD30 (Ki-1) (AC-10)	AP9000	100 µg	AQ1350	100 µg			AS2030	120 t	APC	AR8330 120 t
CD31 (158-2B3)	AP9010	100 µg	AQ1360	100 µg	AQ2090	120 t	AR8340	120 t		
CD32 (7.3)	AP9020	100 µg	AQ1370	100 µg	AQ2100	120 t	AR8350	120 t	F(ab') ₂	AT3980 100 µg
CD32 (7.3)									F(ab)	AT3990 100 µg
CD33 (FOS)							AQ6530	100 t		
CD33 (WM-53)	AP9030	100 ug	AQ1880	100 t	AQ2110	120 t	AR8360	120 t		
CD34 (43A1)	AQ3220		AR1680		AR1830		AS2040	120 t		
CD34 (CS37)					AQ2960	100 t	AQ6540	100 t	APC	AR9460 100 t
CD35 (AR2)	AQ0000	100 µg			AQ2970	100 t	AQ6550	100 t		
CD35 (E11)	AP9040	100 µg	AQ1380	100 µg	AQ2120	120 t	AR8370	120 t		
CD36 (SMO)	AP9050	100 µg	AQ1390	100 µg	AQ2130	120 t				
CD37 (IPO-24)	AP9060	100 µg	AQ1400	100ug	AQ2140	120 t	AR8380	120 t		
CD38 (AT1)	AP9070	100 µg	AQ1410	100 µg	AQ2150	120 t	AR8390	120 t		
CD38 (TME-2)	AQ0010	100 µg			AQ2980	100 t	AQ6560	100 t	APC	AR9470 100 t
CD39 (BU61)	AP9080	100 µg	AQ1420	100 µg	AQ2160	120 t	AR8400	120 t		
CD40 (BE-1)	AP9090	100 µg	AQ1430	100 µg	AQ2170	120 t	AR8410	120 t		
CD40 (EA-5)	AP9100	100 µg	AQ1440	100 µg	AQ2180	120 t	AR8420	120 t		
CD40L (CD154) (24-31)	AQ6230	100 µg	AR8050	100 µg	AR8430	120 t	AS7200	120 t		
CD41a (96.2C1)	AP9110	100 µg			AQ2190	120 t	AR8440	120 t		
CD42a (ESS)					AQ2990	100 t	AQ6570	100 t		
CD43 (leukosialin) (DFT1)	AP9120	100 µg	AQ1450	100 µg	AQ2200	120 t	AR8450	120 t		
CD44 (7F1)	AQ0020	100 µg			AQ3000	100 t	AQ6580	100 t		
CD44 (epitope 1) (BU52)	AP9130	100 µg	AQ1460	100 µg	AQ2210	120 t	AR8460	120 t		
CD44 (epitope 2) (BU75)	AP9140	100 µg	AQ1470	100 µg	AQ2220	120 t	AR8470	120 t		
CD45 (BHPT-1)					AQ3010	100 t	AQ6590	100 t	APC	AR9480 100 t
CD45 (BHPT-1)									Cy5RPE	AR6960 100 t
CD45 (C11)	AP7700	100 µg	AP9150	100 µg	AP9720	120 t	AR8480	120 t		
CD45 RA (158.4D3)	AP9160	100 µg	AQ1480	100 µg	AQ2230	120 t	AR8490	120 t		
CD45R (351C5)	AQ3230	100 µg	AR1690	100 µg	AR1840	120 t				
CD45RA (BHKG-2)P	AQ0030	100 µg			AQ3020	100 t	AQ6600	100 t		
CD45RO (UCHL1)	AP7710	100 µg	AP9170	100 µg	AP9730	120 t	AR8500	120 t		
CD46 (169-1-E4.3)	AP9180	100 µg			AQ2240	120 t	AR8510	120 t		
CD48 (5-4.8)	AP9190	100 µg	AQ5960	100 µg	AQ6010	120 t	AR8520	120 t		
CD49b (HAS6)	AP9200	100 µg	AQ1490	100 µg	AQ2250	120 t	AR8530	120 t		
CD49d (BU49)	AP9210	100 µg	AQ1500	100 µg	AQ2260	120 t	AR8540	120 t		
CD49f (BQ16)	AP9220	100 µg	AQ1510	100 µg	AQ2270	120 t	AR8550	120 t		
CD50 (186-2G9)	AP9230	100 µg	AQ1520	100 µg	AQ2280	120 t	AR8560	120 t		
CD51 (P2W7)	AP9240	100 µg	AQ1530	100 µg	AQ2290	120 t	AR8570	120 t		
CD53 (63.5A3)	AP9250	100 µg	AQ1540	100 µg	AQ2300	120 t	AR8580	120 t		
CD54 (D3.6)	AQ0040	100 µg			AQ3030	100 t	AQ6610	100 t		
CD54 (ICAM-1) Domain 1 (15.2)	AP9260	100 µg	AQ1550	100 µg	AQ2310	120 t	AR8590	120 t		
CD54 (ICAM-1) Domain 2 (8.4A6)	AP9270	100 µg	AQ1560	100 µg	AQ2320	120 t	AR8600	120 t		
CD55 (67)	AP9280	100 µg	AQ1570	100 µg	AQ2330	120 t	AR8610	120 t		
CD56 (C5a)					AQ3040	100 t	AQ6620	100 t		
CD56 (ERIC-1)	AQ3240	100 µg	AR1700	100 µg						
CD57 (NK-1)	AP9290	100 µg	AQ5970	100 µg	AQ6020	120 t				
CD58 (TS2/9)	AQ0690	100 µg	AQ5310	100 µg	AQ5400	120 t	AS2050	120 t		
CD59 (BRA-10G)	AP9300	100 µg	AQ1580	100 µg	AQ2340	120 t	AR8620	120 t		
CD61 (43.PL)	AQ0050	100 µg			AQ3050	100 t				
CD62E (HAE-1f)	AP9310	100 µg	AQ1590	100 µg	AQ2350	120 t	AR8630	120 t		
CD62L (1H3)	AQ0060	100 µg			AQ3060	100 t	AQ6630	100 t		
CD62L (LAM1-116)	AP9320	100 µg	AQ1600	100 µg	AQ2360	120 t	AR8640	120 t		
CD62P (P-selectin) (G1/G1-4)	AP9330	100 µg	AQ1610	100 µg	AQ2370	120 t	AR8650	120 t		
CD63 (AHN16.1/46-4-5)	AP9340	100 µg	AQ1620	100 µg	AQ2380	120 t	AR8660	120 t		
CD64 (10.1)	AP9350	100 µg	AQ1630	100 µg	AQ2390	120 t	AR8670	120 t	F(ab') ₂	AT4000 100 µg
CD66e (CB30)	AQ0700	100 µg	AQ5320	100 µg	AQ5410	120 t	AS2060	120 t		
CD69 (HP-4B3)	AP9360	100 µg	AQ1640	100 µg	AQ2400	120 t	AR8680	120 t		
CD69 (SMM)					AQ3070	100 t	AQ6640	100 t		
CD70 (BU69)	AP9370	100 µg	AQ1650	100 µg	AQ2410	120 t	AR8690	120 t		
CD71 (BGX.24)					AQ3080	100 t	AQ6650	100 t		
CD71 (DF1513)	AP9380	100 µg	AQ1660	100 µg	AQ2420	120 t	AR8700	120 t		

Immunologicals - Accessory reagents

Flow Cytometry Technique

	Purified		Biotin		FITC		R-PE		Other	
	Cat. #	Size	Cat. #	Size	Cat. #	Size	Cat. #	Size	Type	Cat. # Size
CD74 (M-B741)	AP9390	100 µg	AQ1670	100 µg	AQ2430	120 t	AR8710	120 t		
CD79a (ZL7-4)	AQ0710	100 µg	AQ5330	100 µg	AQ5420	120 t	AS2070	120 t		
CD79b (BCR-Ig) (SN8/3A2-2E7)	AQ6240	100 µg	AR8060	100 µg	AR8730	120 t	AS7210	120 t		
CD80 (BB1)	AQ3260	100 µg	AR1720	100 µg	AR1860	120 t				
CD80 (P1H5.A1.A1)	AQ3270	100 µg	AR1730	100 µg			AS2080	120 t	F(ab') ₂	AS4450 100 µg
CD81 (1.3.3.22)	AP9420	100 µg	AQ1690	100 µg	AQ2450	120 t	AR8740	120 t		
CD83 (HB15e)	AQ0720	100 µg	AQ5340	100 µg	AQ5430	120 t	AS2090	120 t		
CD84 (152.1D5)	AQ3280	100 µg	AR1740	100 µg	AR1870	120 t	AS2100	120 t		
CD86 (B7-2) (BU63)	AQ3290	100 µg	AR1750	100 µg	AR1880	120 t	AS2110	120 t		
CD94 (HP-3D9)	AQ6250	100 µg	AR8070	100 µg	AR8750	120 t	AS7220	120 t		
CD95 (3.22)					AQ3090	100 t	AQ6660	100 t		
CD95 (APO-1/FAS) (ANC95.1/5E2)	AP9430	100 µg	AQ1700	100 µg	AQ2460	120 t	AR8760	120 t		
CD95L (FAS Ligand) (Alf-2.1a)	AQ0730	100 µg	AQ5350	100 µg	AQ5440	120 t	AS2120	120 t		
CD95L, see CD178										
CD98 (UM7F8)	AQ3300	100 µg	AR1760	100 µg	AR1890	120 t	AS2130	120 t		
CD100 (133-1C6)	AQ3310	100 µg	AR1770	100 µg	AR1900	120 t				
CD103 (AX.14)					AQ3100	100 t	AQ6670	100 t		
CD104 (beta4 Integrin) (UMA9)	AQ3320	100 µg	AR1780	100 µg	AR1910	120 t	AS2140	120 t		
CD105 (SN6/N1-3A1)	AP9440	100 µg	AQ1710	100 µg	AQ2470	120 t	AR8770	120 t		
CD106 (1.G11B1)	AP9450	100 µg	AQ1720	100 µg	AQ2480	120 t	AR8780	120 t		
CD117 (c-kit) (57A5)	AP9460	100 µg	AQ1730	100 µg			AR8790	120 t	APC	AR8800 120 t
CD117 (Nuc-kit)	AQ0070	100 µg			AQ3110	100 t	AQ6680	100 t		
CD122 (9A2)	AP9470	100 µg	AQ1740	100 µg						
CD134 (Ber Act 35)	AQ6260	100 µg	AR8080	100 µg	AR8810	120 t	AS7230	120 t		
CD137 (4B4-1)	AQ6270	100 µg	AR8090	100 µg	AR8820	120 t	AS7240	120 t		
CD137 Ligand (ANC137L.1)	AQ6280	100 µg	AR8100	100 µg	AR8830	120 t	AS7250	120 t		
CD147 (UM-8D6)	AP9480	100 µg	AQ1750	100 µg	AQ2490	120 t	AR8840	120 t		
CD152 (ANC152.2)	AQ6290	100 µg	AR8110	100 µg			AS7260	120 t		
CD152 (CTLA-4) (ANC152.2)									F(ab') ₂	AT4010 100 µg
CD154 (CD40L) (24-31)	AQ6230	100 µg	AR8050	100 µg	AR8430	120 t	AS7200	120 t		
CD161 (B199.2)	AQ0740	100 µg	AQ5360	100 µg	AQ5450	120 t	AS2150	120 t		
CD162 (PL1/3E2-25-5)	AP9490	100 µg	AQ9840	100 µg			AS4460	120 t		
CD165 (AD2)	AQ0750	100 µg	AQ5370	100 µg	AQ5460	120 t	AS2160	120 t		
CD166 (ALCAM) (3A6)	AQ0760	100 µg	AQ5380	100 µg	AQ5470	120 t	AS2170	120 t		
CD178 (APO-1/FAS) (ANC95.1/5E2)	AP9430	100 µg	AQ1700	100 µg	AQ2460	120 t	AR8760	120 t		
CD178, see CD95L										
CD179a V-Pre-B (B-MADd688)	AS9420	100 t								
CDw60 (UM4D4)	AQ3250	100 µg	AR1710	100 µg	AR1850	120 t				
CDw75 (LN1)	AP9400	100 µg	AQ5980	100 µg	AQ6030	120 t				
CDw78 (DF1588)	AP9410	100 µg	AQ1680	100 µg	AQ2440	120 t	AR8720	120 t		
HLA-DR (423L)	AQ0080	100 µg			AQ3120	100 t	AQ6690	100 t		
GL50 (ICOS L, B7RP-1) (ANC4E3)	AQ9450	100 µg	AS0300	100 µg			AS8410	120 t	no azide	AQ9460 100 µg
Glycophorin (A63-B/C2)	AQ0770	100 µg	AQ5390	100 µg	AQ5480	120 t				
ICOS (ANC7C7)	AQ9470	100 µg	AS0310	100 µg			AS8420	120 t	no azide	AQ9480 100 µg
IFN-gamma (45.15)	AP9580	100 µg	AQ1840	100 µg	AQ2580	120 t	AR8940	120 t		
IL2 (N7-48A)	AP9590	100 µg	AQ1850	100 µg	AQ2590	120 t	AR8950	120 t		
IL4 (4D9)	AP9600	100 µg	AQ1860	100 µg	AQ2600	120 t	AR8960	120 t		
MHC Class I (HLA-A, B & C) (3F10)	AP9550	100 µg	AQ1810	100 µg	AQ2550	120 t	AR8900	120 t		
MHC Class II (HLA-DP, DQ & DR) (TDR31.1)	AP9560	100 µg	AQ1820	100 µg	AQ2560	120 t	AR8910	120 t		
p53 (mutant) (PAb240)	AP9570	100 µg	AQ1830	100 µg	AQ2570	120 t	AR8930	120 t		
perforin (deltaG9)	AQ6300	100 µg	AR8120	100 µg	AR8920	120 t	AS7270	120 t		
TCR C beta1 chain (JOVI-1)	AQ3330	100 µg	AR1790	100 µg	AR1920	120 t	AS2180	120 t		
TCR V beta3 Chain (JOVI-3)	AQ3340	100 µg	AR1800	100 µg	AR1930	120 t	AS2190	120 t		
TNF-alpha (J1D9)	AP9610	100 µg	AQ1870	100 µg	AQ2610	120 t	AR8970	120 t		

Immunologicals - Accessory reagents

Flow Cytometry Technique

Cocktail name	Cat. #	size 1	Cat. #	size 2
2 color systems				
CD2 FITC / CD7 PE	AQ6700	50 t	AQ6701	100 t
CD2 FITC / CD20 PE	AQ6710	50 t	AQ6711	100 t
CD2 FITC / HLA-DR PE	AQ6720	50 t	AQ6721	100 t
CD3 FITC / CD4 PE	AQ6730	50 t	AQ6731	100 t
CD3 FITC / CD8 PE	AQ6740	50 t	AQ6741	100 t
CD3 FITC / CD16 PE	AQ6750	50 t	AQ6751	100 t
CD3 FITC / CD16&56 RPE	AQ6760	50 t	AQ6761	100 t
CD3 FITC / CD19 PE	AQ6770	50 t	AQ6771	100 t
CD3 FITC / CD20 PE	AQ6780	50 t	AQ6781	100 t
CD3 FITC / CD25 PE	AQ6790	50 t	AQ6791	100 t
CD3 FITC / CD26 PE	AQ6800	50 t	AQ6801	100 t
CD3 FITC / CD27 PE	AQ6810	50 t	AQ6811	100 t
CD3 FITC / CD28 PE	AQ6820	50 t	AQ6821	100 t
CD3 FITC / CD38 PE	AQ6830	50 t	AQ6831	100 t
CD3 FITC / CD44 PE	AQ6840	50 t	AQ6841	100 t
CD3 FITC / CD45RA PE	AQ6850	50 t	AQ6851	100 t
CD3 FITC / CD54 PE	AQ6860	50 t	AQ6861	100 t
CD3 FITC / CD56 PE	AQ6870	50 t	AQ6871	100 t
CD3 FITC / CD62L PE	AQ6880	50 t	AQ6881	100 t
CD3 FITC / HLA DR PE	AQ6890	50 t	AQ6891	100 t
CD4 FITC / CD2 PE	AQ6900	50 t	AQ6901	100 t
CD4 FITC / CD7 PE	AQ6910	50 t	AQ6911	100 t
CD4 FITC / CD8 PE	AQ6920	50 t	AQ6921	100 t
CD4 FITC / CD25 PE	AQ6930	50 t	AQ6931	100 t
CD4 FITC / CD26 PE	AQ6940	50 t	AQ6941	100 t
CD4 FITC / CD27 PE	AQ6950	50 t	AQ6951	100 t
CD4 FITC / CD28 PE	AQ6960	50 t	AQ6961	100 t
CD4 FITC / CD38 PE	AQ6970	50 t	AQ6971	100 t
CD4 FITC / CD44 PE	AQ6980	50 t	AQ6981	100 t
CD4 FITC / CD45RA PE	AQ6990	50 t	AQ6991	100 t
CD4 FITC / CD54 PE	AQ7000	50 t	AQ7001	100 t
CD4 FITC / CD62L PE	AQ7010	50 t	AQ7011	100 t
CD4 FITC / HLA-DR PE	AQ7020	50 t	AQ7021	100 t
CD5 FITC / CD19 PE	AQ7031	100 t	AQ7030	50 t
CD5 FITC / CD20 PE	AQ7040	50 t	AQ7041	100 t
CD7 FITC / CD13 PE	AQ7050	50 t	AQ7051	100 t
CD7 FITC / CD13&33 PE	AQ7060	50 t	AQ7061	100 t
CD7 FITC / CD33 PE	AQ7070	50 t	AQ7071	100 t
CD8 FITC / CD2 PE	AQ7080	50 t	AQ7081	100 t
CD8 FITC / CD4 PE	AQ7090	50 t	AQ7091	100 t
CD8 FITC / CD11a PE	AQ7100	50 t	AQ7101	100 t
CD8 FITC / CD16 PE	AQ7110	50 t	AQ7111	100 t
CD8 FITC / CD26 PE	AQ7120	50 t	AQ7121	100 t
CD8 FITC / CD27 PE	AQ7130	50 t	AQ7131	100 t
CD8 FITC / CD28 PE	AQ7140	50 t	AQ7141	100 t
CD8 FITC / CD38 PE	AQ7150	50 t	AQ7151	100 t
CD8 FITC / CD44 PE	AQ7160	50 t	AQ7161	100 t
CD8 FITC / CD45RA PE	AQ7170	50 t	AQ7171	100 t
CD8 FITC / CD54 PE	AQ7180	50 t	AQ7181	100 t
CD8 FITC / CD56 PE	AQ7190	50 t	AQ7191	100 t
CD8 FITC / CD62L PE	AQ7200	50 t	AQ7201	100 t
CD8 FITC / HLA-DR PE	AQ7210	50 t	AQ7211	100 t
CD10 FITC / CD19 PE	AQ7220	50 t	AQ7221	100 t
CD14 FITC / CD13 PE	AQ7230	50 t	AQ7231	100 t
CD19 FITC / CD2 PE	AQ7240	50 t	AQ7241	100 t
CD45 FITC / CD14 PE	AQ7250	50 t	AQ7251	100 t
3 color systems				
HLA-DR FITC / CD4 PE	AQ7260	50 t	AQ7261	100 t
CD3 FITC / CD4 PE / CD8 Third Color	AR7000	50 t	AT6070	200 t
CD3 FITC / CD4 PE / CD45 Third Color	AR6970	50 t	AT6040	200 t
CD3 FITC / CD8 PE / CD45 Third Color	AR6980	50 t	AT6050	200 t
CD3 FITC / CD19 PE / CD45 Third Color	AR6990	50 t	AT6060	200 t
CD4 FITC / CD8 PE / CD3 Third Color	AR7010	50 t	AT6080	200 t

For researchers who are running a large number of Flow samples with multiple antibodies, we offer a selection of 2 and 3 color Flow Cocktails. (cocktails are also available for isotype controls – see Isotype controls section).

Immunologicals - Accessory reagents

Flow Cytometry Technique

Technical tip

Cytometer cleaning

Washing efficiently vessels or instruments tubulars and recipients is sometime a burden in sensitive fluorescent technologies. Adsorbed dyes are released during further incubations or analysis, generating undesired background.

The problem occurs notably in cytometry analysis, especially when there is running dead cells and adherent or clumped cells, (i.e. platelets analysis can be a tricky job!). Plenty of analysis is made or when there are many users. Several in-house procedures are used, but they are time consuming, use diverse oxidants (i.e. NaClO), detergents (SDS, TX100, Domestos, Extran100 or 300), and are not all purpose, and require extensive washings. Commercial washing buffers exist, as the "Facs Rinse" and "Clenz", but they are expensive, and also include detergents plus other substances that are, even in traces, more or less toxic to living cells.

FluoProbes® developed an innovative alternative solution for rinsing and cleaning cytometers tubulars, the FluoCD™ FCM washing buffer. FluoCD™ technology solubilizes adsorbed fluorescent dyes as detergent do, and avoids concerns of oxidant-based procedures. The efficiency has been shown notably for carbocyanines (i.e. DiOC6, lipophilic dyes that are known reluctant to proper washing), phenanthrenes, and acridines.

Ab isotype controls for Flow Cytometry

Interchim proposes a line of isotype controls with non-human specificities, which allows you to successfully discriminate between positive and negative populations in flow cytometric analysis.

The control antibody is used to discriminate non-specific binding of mouse or rabbit antibodies to human cells due to Fc receptor binding or other protein-protein interactions. The isotype of a monoclonal control antibody should match the isotype of the test antibody. It is important to use isotype controls that do not have specificities or cross-reactivities to human antigens.

Identical staining procedures should be used with control and test antibodies.

Mouse negative controls

	Purified	Purified no azide/no BSA	Biotin	FITC	R-PE	APC
Mouse IgG1	87758T	P27221	P27331	P27091	P27101	P27381
Mouse IgG2a	P27111	P27231	P27341	P27121	369661	P27391
Mouse IgG2b	P27131	P27241	P27351	P27141	P27151	P27401
Mouse IgG3	P27161	P27251	P27361	P27171	P27181	P27411
Mouse IgM	P27191	Q34510	P27371	P27201	P27211	P27421

Mouse isotype controls are 200 µg size (at least 150 tests).

Mouse negative controls cocktails

IgG1 FITC / IgG1 PE	AQ0100	100 t
IgG1 FITC / IgG2a PE	AQ0110	100 t
IgG2a FITC / IgG1 PE	AQ0120	100 t
IgG2a FITC / IgG2a PE	AQ0130	100 t
IgG2a FITC / IgG2b PE	AQ0140	100 t
IgG1 FITC / IgG1 PE / IgG1 Third Color	AR7020	50 t
IgG1 FITC / IgG1 PE / IgG1 Third Color	AT6090	200 t

Rabbit negative controls

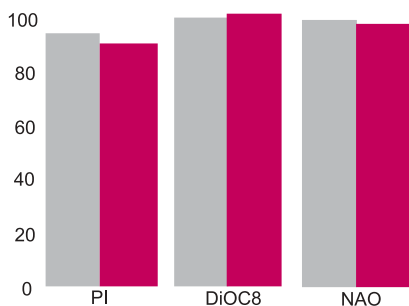
	Purified	Purified no azide/no BSA
IgG (pAb)	N79540 100 µg	
	N79541 500 µg	Q34571 500 µg
	N79542 1 mg	Q34572 1 mg

FluoCD wash buffer

Ideal for washing/rinsing cytometer systems between each analysis. FluoCD™ washing buffer contains no detergent, nor oxidants, but our proprietary FluoCD™ technology performs **at least equal washing efficiency** than your usual rinsing buffer, **with great benefits** :

- ◆ No bubbles
- ◆ Not toxic (safe to cells and users) reduced background + improved cell response
- ◆ Do not need extensive rinsing considerably reduces buffer use and rinsing time
- ◆ Cost-effective
- ◆ Convenient special packs : ready-to-go !

Description	Cat.#	Qty
FluoCD™ washing buffer	FP-BC0991	30 ml
30 ml is sufficient for performing ~ 200 inter-acquisition washes ~ 20 inter-analysis cleanings	FP-BC0992	10 x 3 ml



Washing efficiency with FACS Rinse (in grey) and FluoCD wash buffer (in orange) after an analysis with Propidium Iodide (PI: FP-31238), DiOC6 (FP, and Nonyl Acridine Orange (NAO: FP-58566). 100% efficiency means that residual fluorescence is decreased by 100% after the washing procedure.