

# Primary Antibodies & Ags

## Alphabetical Listing

Name	Host - Isotype	Clone	Species Reactivity				Application						Size	Cat.#	Research Area
			Hu	Ms	Rt	Other	WB	IHC	EL	FC	IP	Other			
Brucella abortus, intact cells	Ms IgG2a	BrG11					+	+					1 mg	GG1170	15
Brucella abortus, LPS	Ms IgG1	Bx85								+			1 mg	Q40450	15
Brucella abortus, LPS	Ms IgG1	Bx88								+			1 mg	GG1180	15
BTF / BCLAF1, <i>Advanced panel</i>	Rb	Pab	+							+			3x100µl	GR4410	3-10
BTK, middle region	Rb	Pab	+					+	+	+			100 µg	GL4930	21
BUB1A, C-term	Rb	Pab	+					+	+				100 µg	GL7000	21
BUB1B, N-term	Rb	Pab	+					+	+				100 µg	GL7010	21
BUBR1	Ms IgG1	8G1	+					+					100 µl	BA2400	5-22-21-12
BubR1, <i>Advanced panel</i>	Rb	Pab	+							+			3x100µl	GR3960	10-22-21

## C

C/EBP alpha, <i>Nushift</i>	Rb	Pab	+	+				+			GS	100 µg	GS1530	10	
C/EBP beta, <i>Nushift</i>	Rb	Pab	+	+							GS	100 µl	GS1160	10	
C/EBP delta	Rb	Pab	+					+				100 µl	GS1930	10	
C1 Inhibitor	Sh	Pab	+				Rb,Ct+				IEP,DD	1 ml	N89660	12	
C-10	Rb	Pab		+				+	+		Neut	50 µg	AR5730	9	
C-10	Rb	Pab		+				+	+			100 µg	O12220	9	
C-10 -Biotin	Rb	Pab		+				+	+			25 µg	AR3780	9	
C28R2 (Ca-pump inhibitory peptide)	Rb	Pab	+					+	+			100 µg	GS9010	17	
CA15-3, see EMA															
CA150	Rb	Pab	+					+				100 µg	GR4910	10	
CA150	Rb	Pab	+					+				100 µl	BA2500	10	
C-Abl	Ms IgG1	8E9	+	+				+	+		+	IF	500 µl	Q08100	22
C-Abl	Rb	Pab	+	+				+					500 µl	S46990	22
C-Abl	Rb	Pab	+	+				+	+		+		500 µl	AO1621	
CABP28K	Rb	Pab	(+) +	(+) (Rb,Bv)+				+	+			100 µg	H29320	22	
CABP28K	Ms IgG1	Mab	(+) +	(+) Bv,(+)				+	+			100 µl	C73140	22	
CABP9K	Rb	Pab		+	(+)			+	+			100 µg	I02950	22	
CABP9K	Rb	Pab	+					+	+			100 µg	D26430	22	
Cachectic Factor peptide	Rb	Pab	+					+	+			100 µl	GS9020	5	
Cachectic Factor protein	Rb	Pab	+					+	+			100 µl	GS9030	5	
Cadherin 5	Ms IgG1	TEA1/31	+								IF	200 µg	O18230	6	
Cadherin E	Ms IgG1	36B5	+					+	+			500 µl	S38770	23	
Cadherin E	Ms IgG1	6H9	+					+	-			1 ml	O19320	7	
Cadherin E	Ms IgG1	67A4	+					+	+			200 µg	O20150	6	
Cadherin E	Rb	Pab	+					+				500 µl	AO1681	8	
Cadherin E	Ms IgG1	NCH-38	+					+				500 µl	V08210	23	
Cadherin P	Ms IgG1	56C1	+					+				500 µl	V02770	8	
Cadherin, pan	Rb	Pab	+	+	+		Bv,Dg+	+				500 µl	S44370	23	
Cadherin, pan	Rb	Pab	+	+	+		Bv,Dg+	+	+			500 µl	AA6821	8-23	
CAF-1, p150	Ms IgG1	Mab	+					+		+		200 µl	AW5540	23-10	
CAF-1, p60	Ms IgG1	Mab	+							+		560 µl	AW5550	23-10	
CAF-1, p60	Ms IgG1	Mab	+					+		+		100 µl	AW5560	23-10	
Caffeine	Ms IgG	M94128								+		1 mg	P43290	11	
Caffeine	Ms IgG2b	9401								+		RIA	1 mg	N92570	11
Caffeine	Ms IgG1	9403								+		RIA	1 mg	N92580	11
CAK, see CDK7															
Calbindin	Ms IgG1	KR6	+							+		500 µl	V03570	20	
Calcineurin (A+B subunits) protein	Rb	Pab					Bv	+	+			100 µg	GS9040	22	
Calcineurin A subunit	Ms IgG1	Mab	+	+			Bv	+	+			100 µl	GS9050	22	
Calcineurin A subunit	Rb	Pab	+	+	+		Sw,Bv	+	+			100 µg	BB5360	22	
Calcineurin B subunit	Rb	Pab	+	+	+		Bv	+	+			100 µl	AT3221	22	
Calcineurin B subunit	Ms IgG2a	Mab	+	+	+			+	+			100 µg	GS9060	22	
Calcitonin, see Procalcitonin															
Calcitonin	Gt	Pab	+	(+)	(+)	(Rb)		+	+			100 µg	I75750	14	

### Research Area Code

- |   |  |   |   |  |
|---|--|---|---|--|
| 1 Allergens                             | 6 Cardiac Markers and related molecules  | 11 Drugs and resistance                             | 16 Lipides/Apolipo/Lipoproteins             | 20 Neuroscience                        |
| 2 Anglo/Histogenesis                    | 7 CD Markers                             | 12 Enzymes & enzymes inhibitors                     | 17 Membrane channels and transport proteins | 21 Post translational modifications    |
| 3 Apoptosis/cell cycle                  | 8 Cell adhesion                          | 13 Hematopoietic markers                            | 18 Metabolism/Energy pathways               | 22 Signal transduction/Stress response |
| 4 Blood and serum proteins              | 9 Cytokine/Chemokine/Growth factors      | 14 Hormones/Steroids                                | 19 Miscellaneous                            | 23 Structural proteins                 |
| 5 Cancer, Hypoxia and related molecules | 10 DNA Replication/Transcription/Repairs | 15 Infectious agents related molecules & resistance |   | 24 Tags and Markers                    |

# Primary Antibodies & Ags

## Alphabetical Listing

Name	Host - Isotype	Clone	Species Reactivity				Application						Size	Cat.#	Research Area		
			Hu	Ms	Rt	Other	WB	IHC	ICC	EL	FC	IP				Other	
Calcitonin	Ms IgG2a	Mab	+					+	+				COA	100 µg	GS9070	14	
Calcitonin	Gt	Pab	+										RIA	100 µl	P48890	14-20	
Calcitonin	Rb	Pab	+	+	+	Sw,hrs+		+						<b>500 µl</b>	AO1701	14	
Calcitonin	Rb IgG	SP17	+	+	+	Sw,hrs+		+						<b>500 µl</b>	V17590	14	
Calcitonin	Rb	Pab	+										RIA	20 µl	L53640	14	
Calcitonin	Rb	Pab	+					+						6 ml	N94170	14	
Calcitonin	Rb	Pab	+	+	+	Sw,hrs+		+						<b>500 µl</b>	S44090	14	
Calcitonin Gene Related Peptide	Rb	Pab	+		(+)	(+)		+	+					<b>100 µg</b>	E54510	14	
Calcitonin Gene Related Peptide	Rb	Pab	+		(+)	Dg,(+)		+	+					<b>100 µg</b>	I55500	14	
Calcitonin Gene Related Peptide	GP	Pab	+					+						50 µl	GG0480	14	
Calcitonin Receptor	Rb	Pab	+					+						50 µl	GG5280	22-14	
Calcitonin Receptor-like Receptor	Rb	Pab			(+)	+		+	+					<b>100 µg</b>	G45740	22-14	
Calcitonin Receptor-like Receptor	Rb	Pab	+	+	+			+						50 µl	FT5730	22-14	
Calcitonin Receptor-like Receptor	Rb	Pab	+	+	+			+						50 µl	FT5710	22-14	
Calcium Pump ATPase	Ms IgG1	JA3	+					+						<b>500 µl</b>	Q08210	20	
Calcium transporter 1	Rb	Pab		+	+			+	+					<b>100 µg</b>	E73020	22-17	
Calcium transporter 2	Rb	Pab		(+)	+	(Rb)		+	+					<b>100 µg</b>	I77600	22-17	
Calcium-Sensing Receptor	Rb	Pab	+	+	+			+						50 µl	GG4570	22	
Calcium-Sensing Receptor	Rb	Pab	+					+						50 µl	GG5070	22	
Calcium-Sensing Receptor	Rb	Pab	+					+						50 µl	GG5071	22	
Calcium-Sensing Receptor 1	Rb	Pab	+	(+)	(+)	(Bv)		+	+					<b>100 µg</b>	E63420	22	
Caldesmon	Ms IgG1	h-CALD	+					+						<b>500 µl</b>	Q08310	23	
Caldesmon	Ms IgG1	I-CALD	+					+	+				IF	<b>500 µl</b>	Q08350	23	
Caldesmon (duck)	Ms IgG1	12B5				Duck		+	+				+	1 mg	N96770	20	
Calmodulin	Sh	Pab						+	+					1 mg	P98790	20	
Calmodulin	Ms IgG1	1F11	+		+	Bv,Ck+		+						<b>500 µl</b>	Q08420	20	
Calmodulin	Ms IgG1	2D1	+		+	Bv,Ck+		+						<b>500 µl</b>	Q08460	20	
Calmodulin	Ms IgG1	6D4	+		+	Bv,Ck+		+						<b>500 µl</b>	Q08500	20	
Calmodulin	Ms IgG1	cocktail	+		+	Bv,Ck+		+						<b>500 µl</b>	Q08540	20	
Calmodulin, C-term	Rb	Pab	+					+	+					100 µg	GK5510	22-20	
Calmodulin, N-term	Rb	Pab	+					+	+					100 µg	GK5500	22	
Calpain 1, domain I	Rb	Pab	+					+						150 µg	AL9580	12	
Calpain 1, domain I, N-term.	Rb	Pab	+					+						150 µg	AL9590	12	
Calpain 1, domain IV	Rb	Pab	+					+						150 µg	AL9600	12	
Calpain 2, domain I, N-term.	Rb	Pab	+					+						150 µg	AL9610	12	
Calpain 2, domain III	Rb	Pab	+					+						150 µg	AL9630	12	
Calpain 2, domain III	Rb	Pab	+					+						150 µg	AL9620	12	
Calpain 3, domain I	Rb	Pab	+					+						150 µg	AL9640	12	
Calpain 3, domain II (Insert #1)	Rb	Pab	+					+						150 µg	AL9340	12	
Calpain 3, domain III	Rb	Pab	+					+						150 µg	AL9650	12	
Calponin	Ms IgG1	CALP	+		+			+						<b>500 µl</b>	Q08580	23	
Calreticulin	Rb	Pab	+	+	+	Bv,Hm		+	+				+	IF	100 µl	966371	22-10
Calretinin	Rb	Pab	+	+	+	GP		+	+	+				100 µl	I73310	22	
Calretinin	Ms IgG1	Mab	+	+	+			+	+	+				100 µl	C78880	5-22	
Calretinin	Rb	Pab	+	+	+			+						<b>500 µl</b>	V15910	5-22	
Calretinin	Rb IgG	SP13	+	+	+			+						<b>500 µl</b>	V17400	5-22	
Calretinin	Ms IgG1	CRT01	+	+	+			+						<b>500 µl</b>	N60880	5-22	
Calretinin	Ms IgG1	DAK Calret 1	+					+						<b>500 µl</b>	V08060	5-22	
Calsarcin-1 / Myozenin-2	Rb	Pab		(+)	+			+	+					<b>100 µg</b>	GS9080	23	
Calsarcin-2 / Myozenin-1	Rb	Pab	+	+				+	+					<b>100 µg</b>	GS9090	23	
CaM KII, phospho (thr 286)	Rb	Pab	+	+	+	Xe		+						100 µl	AW7660	22-21-12	
CaM KII, phospho (thr 305)	Rb	Pab	+	+	+	Bv,Ck+		+	+				+	100 µl	AW9850	22-21-12	
CAMK1, C-term	Rb	Pab	+	+	+	Mk		+	+	+				100 µg	GL2680	21	
CAMK1G, C-term	Rb	Pab	+					+	+	+				100 µg	GL3180	21	
CAMK1-like, C-term	Rb	Pab	+					+	+	+				100 µg	GL2670	21	

**Species legend** : Bd : Bird, Bv : Bovine, Ck : Chicken or Hen, Ct : Feline, Dg : Canine, Dr : Drosophila, Eq : Equine, F : Fish, Fr : Frog, Ft : Ferret, GP : Guinea Pig, Gt : Goat, Hm : Hamster, Hrs : Horse, Hu : Human, Ko : Kangaroo, M : Mammalian, Mi : Mink, Mk : Monkey, Ms : Mouse, Ne : Nematode, Op : Opossum, Pl : plant, Ql : Quail, Rb : Rabbit, Rt : Rat, Sh : Sheep, Sw : Porcine, Sy Hm : Syrian Hamster, Xe : Xenopus, Ye : Yeast

**Size** : Size indicated in bold means several sizes and formats are available (sample size or bigger size, unpurified neat serum, without azide or BSA, positive control...) : contact us for more detail

**Application legend** : Bk : Blocking, CD : Cell detection, Ch : ChIP, COA : ELISA capture, Db : Dot Blot, DD : Double diffusion, EL : ELISA detection, EM : Electron Microscopy, FCM : Flow Cytometry, FIA : FluoroImmunoAssay, GS : Gel (super)shift, HA : Hemagglutination/Latex agglutination, ICC : ImmunoCytoChemistry, IEP : Immunoelectrophoresis, IF : Immunofluorescence, IHC : ImmunoHistoChemistry, IP : Immunoprecipitation/Immunopurification, ISH : In Situ Hybridization, KA : Kinase assay, LF : Lateral flow, Neph : Nephelometry, Neut : Neutralizing, RIA : RadioImmunoassay, RID : Radial Immunodiffusion, SB : Southern Blot, TIA : Turbidimetry

**Name** : Prefixes as 'alpha', 'D1-', 'Pro-',... are not considered for the alphanumerical sorting, and often included after the main name.

(+) : Expected species cross-reactivities based on immunogen sequence homology \_ Expected application suitability.

# Primary Antibodies & Ags

## Alphabetical Listing

Name	Host - Isotype	Clone	Species Reactivity				Application						Size	Cat.#	Research Area	
			Hu	Ms	Rt	Other	WB	IHC	ICC	EL	FC	IP				Other
CAMK2 alpha, C-term	Rb	Pab	+					+	+	+				100 µg	GL2690	21
CAMK2 beta, C-term	Rb	Pab	+	+				+	+	+				100 µg	GL2700	21
CAMK2 delta, C-term	Rb	Pab	+			Mk		+	+	+				100 µg	GL2720	21
CAMK2 delta-like, C-term	Rb	Pab	+					+	+	+				100 µg	GL2710	21
CAMK2 gamma, C-term	Rb	Pab	+					+	+	+				100 µg	GL2730	21
CAMK4, C-term	Rb	Pab	+					+	+					100 µg	GL2740	21
Campylobacter	Rb	Pab								+				1 ml	N92590	15
Campylobacter jejuni	Ms IgM	M7120321						+	+	+				200 µg	P43330	15
Campylobacter jejuni	Rb	Pab								+				1 ml	P48910	15
Campylobacter jejuni	Rb	Pab									+	IF		1 ml	N88810	15
Campylobacter jejuni	Ms IgG3	57-24								+				1 ml	O04920	15
Campylobacter jejuni	Ms IgM	170								+		IF		100 µg	N95880	15
Campylobacter jejuni -Biotin	Rb	Pab								+		IF		1 ml	N91070	15
Campylobacter jejuni -FITC	Rb	Pab								+		IF		1 ml	N91080	15
Campylobacter jejuni -FITC	Rb	Pab								+				1 ml	U72500	15
Campylobacter jejuni -HRP	Rb	Pab							+	+	+			1 ml	P42290	15
Campylobacter jejuni -HRP	Rb	Pab									+		IF	1 ml	N95700	15
Cancer Antigen CA125	Ms IgG1	M8072322	+											1 mg	P43340	5
Cancer Antigen CA125	Ms IgG1	SP111	+							+				500 µl	AO1594	5
Cancer Antigen CA125	Ms IgG1	1F6	+						+	+	+			1 mg	GG1240	5
Cancer Antigen CA125	Ms IgG1	10G12	+						+	+	+			1 mg	GG1230	5
Cancer Antigen CA125	Ms IgG1	197	+						+	+				1 mg	N86500	5
Cancer Antigen CA125	Ms IgG1	185	+						+	+				1 mg	N86540	5
Cancer Antigen CA125	Ms IgG1	101	+						+	+				1 mg	N86510	5
Cancer Antigen CA125	Ms IgG1	93	+						+			COA		1 mg	N86520	5
Cancer Antigen CA125	Ms IgG1	95	+						+	+				1 mg	N86530	5
Cancer Antigen CA125	Ms IgG1	Ov185:1	+						+					500 µl	N60670	5
Cancer Antigen CA125	Ms IgG1	M11	+						+					500 µl	V05590	5
Cancer Antigen CA125	Ms IgG1	OC125	+						+					500 µl	V05640	5
Cancer Antigen CA125 -HRP	Ms IgG1	M77161	+							+				1 mg	U72780	5
Cancer Antigen CA125, Group A	Ms IgG1	X306	+							+				1 mg	S32310	5
Cancer Antigen CA125, Group B	Ms IgG1	X52	+							+				1 mg	S32540	5
Cancer Antigen CA125, Group B	Ms IgG1	X75	+						+	+				1 mg	S32380	5
Cancer Antigen CA125, Group B	Ms IgG1	X325	+						+	+	+			1 mg	S32470	5
Cancer Antigen CA15-3	Ms IgG1	M8071022	+											1 mg	P43350	5
Cancer Antigen CA15-3	Ms IgG1	552	+						+	+				1 mg	N86560	5
Cancer Antigen CA15-3	Ms IgG1	695	+						+					1 mg	N86550	5
Cancer Antigen CA15-3	Ms IgG1	DF3	+						+					500 µl	V06230	5
Cancer Antigen CA19-9	Ms	Mab	+						+	+				1 mg	GS9100	5
Cancer Antigen CA19-9	Ms IgG1	M8073021	+											1 mg	P43360	5
Cancer Antigen CA19-9	Ms IgG1	SP110	+						+					500 µl	AO1571	5
Cancer Antigen CA19-9	Ms IgG1	59	+						+	+				1 mg	N86580	5
Cancer Antigen CA19-9	Ms IgG1	192	+						+					1 mg	N86590	5
Cancer Antigen CA19-9	Ms IgG1	241	+						+					1 mg	N86650	5
Cancer Antigen CA19-9	Ms IgM	CA199.02	+						+					500 µl	Q08020	5
Cancer Antigen CA19-9	Ms IgG1	116-NS-19-9	+						+					500 µl	V05540	5
Cancer Antigen CA19-9	Ms IgM	121SLE	+						+					500 µl	N60700	5
Cancer Antigen CA27-29	Ms IgG1	M4021209	+						+	+				1 mg	FX1760	5
Cancer Antigen CA50	Ms IgM	M991149	+											1 mg	P43370	5
Cancer Antigen CA50	Ms IgGM	C50:8:2:4	+						+					500 µl	V08610	5
Candida albicans	Ms IgG2	M2103120					+			+				100 µg	P43380	15
Candida albicans	Rb	Pab					+					IEP		1 ml	P48930	15
Candida albicans	Rb	Pab										IEP,DD		1 ml	N88820	15
Candida albicans -Biotin	Rb	Pab							+	+		IEP,DD		1 ml	N91090	15
Candida albicans -FITC	Rb	Pab							+	+		IEP,DD		1 ml	N91100	15
Candida albicans -FITC	Rb	Pab					+	+	+	+				1 ml	U72440	15
Candida albicans -HRP	Rb	Pab					+	+	+	+				1 ml	P42300	15
Candida albicans -HRP	Rb	Pab							+	+		IEP,DD		1 ml	N95710	15
Canine Distemper Virus	Ms IgG2a	5-4								+		IF		1 mg	S34720	15
Canine Distemper Virus	Ms IgG2a	8-1					Dg			+		IF		1 mg	S34730	15
Canine Heartworm	Gt	Pab					Dg			+				1 ml	O26720	15
Canine Heartworm -Biotin	Gt	Pab					Dg			+				1 ml	N89920	15
Canine Heartworm -FITC	Gt	Pab					Dg			+				1 ml	N89930	15
Canine Heartworm -HRP	Gt	Pab					Dg			+				1 ml	N94370	15

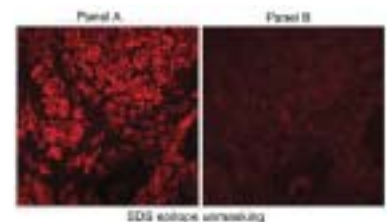
Name	Host - Isotype	Clone	Species Reactivity				Application						Size	Cat.#	Research Area
			Hu	Ms	Rt	Other	WB	IHC	EL	FC	IP	Other			
Canine Parvovirus	Ms IgG2a	8H7				Dg							1 mg	O05480	15
Canine Parvovirus	Ms IgG2a	5G7				Dg							1 mg	O05490	15
Cannabinoid Receptor	Rb	Pab	+	+	+	+	+	+	+				100 µg	S09110	22-20-11
Cannabinoid Receptor	Rb	Pab	+	+	+	(+)	+	+	+				100 µg	R17030	22-20-11
Cannabinoid Receptor	Rb	Pab	+				+	+					100 µg	I65730	22-20-11
Cannabinoid Receptor	Rb	Pab	(+)	(+)	+		+	+					100 µg	R17040	22-20-11
Cannabinoid Receptor 1	Rb	Pab	+					+					50 µl	FT3000	22-20-11
Cannabinoid Receptor 1	Rb	Pab	+					+					50 µl	FT3090	22-20-11
Caper	Rb	Pab	+					+					100 µg	GR4870	10
Caper	Rb	Pab	+					+					100 µg	GR4470	10
Carbamazepine	Sh	Pab				+							1 ml	P48940	11
Carbonic Anhydrase I	Gt	Pab							+			IEP	2 ml	O25110	5-12
Carbonic Anhydrase I	Gt	Pab							+	+	+	Db,IEP	50 mg	N91820	5-12
Carbonic Anhydrase I -HRP	Gt	Pab							+			IEP	20 mg	N94130	5-12
Carbonic Anhydrase II	Rb	Pab				Bv			+				1 ml	P48950	5-12
Carbonic Anhydrase II	Sh	Pab	+						+	+			1 ml	N96780	5-12
Carbonic Anhydrase II	Rb	Pab				Bv			+			IEP	2 ml	N90920	5-12
Carbonic Anhydrase II	Rb	Pab				Bv			+			IEP	50 mg	O10090	5-12
Carbonic Anhydrase II -HRP	Rb	Pab				Bv			+			IEP	20 mg	O13380	5-12
Carbonic Anhydrase IX	Rb	Pab	+						+				100 µl	BH6290	5-12
Carboxyl Terminal Modulator Protein	Rb	Pab	+	+				+	+				100 µg	U62240	22
Carboxypeptidase A	Rb	Pab				Bv			+			IEP	2 ml	O25120	12
Carboxypeptidase A	Rb	Pab				Bv			+		+		50 mg	N91830	12
Carboxypeptidase A -HRP	Rb	Pab				Bv			+			IEP	20 mg	N97340	12
Carcinoembryonic Antigen	Ms IgG1	M85151a	+										1 mg	P43390	5
Carcinoembryonic Antigen	Gt	Pab	+										1 ml	P48970	5
Carcinoembryonic Antigen	Rb	Pab	+										1 ml	P48960	5
Carcinoembryonic Antigen	Ms IgG1	9202	+										1 mg	N92610	5
Carcinoembryonic Antigen	Gt	Pab	+										1 ml	N87840	5
Carcinoembryonic Antigen	Rb	Pab	+								RIA		20 µl	AL9930	5
Carcinoembryonic Antigen	Ms IgG1	12-140-10	+								COA		1 mg	N86750	5
Carcinoembryonic Antigen	Ms IgG1	12-140-1	+							+			1 mg	N86740	5
Carcinoembryonic Antigen	Ms IgG1	1C11	+							+			1 mg	Q32760	5
Carcinoembryonic Antigen	Ms IgG1	1C10	+							+			1 mg	Q32770	5
Carcinoembryonic Antigen	Ms IgG1	1C3	+							+			1 mg	Q35450	5
Carcinoembryonic Antigen	Ms IgG1	1C7	+							+			1 mg	Q34870	5
Carcinoembryonic Antigen -HRP	Ms IgG	M001122	+							+			500 µg	P42050	5
Carcinoembryonic Antigen -HRP	Gt	Pab	+					+	+				100 µg	P42310	5
Cardiotrophin-1	Rb	Pab	+					+	+			Neut	50 µg	AR4480	9
Cardiotrophin-1	Rb	Pab	+					+	+			Neut	100 µg	N97980	9
Cardiotrophin-1 -Biotin	Rb	Pab	+					+	+				25 µg	AR2580	9
Carnitine palmitoyl transferase1: liver	Rb	Pab		+	(+)			+	+				100 µg	AA5950	12-18
Carnitine palmitoyl transferase1: muscle	Rb	Pab		+	(+)			+	+				100 µg	AA5920	12-18

### Carbonic Anhydrase IX

- ◆ Specificity : Carbonic Anhydrase IX
- ◆ Catalog number : **BH6290**
- ◆ Host and isotype : Rabbit IgG
- ◆ Species reactivity : Human
- ◆ Applications and suggested dilution :
  - Immunohistochemistry 1:1000
  - Immunofluorescence 1:1000
  - Western blotting 1:1000 (recombinant CA IX)

**Key References :**

1. Bui, MH et al. Clin. Can. Res. 9(2): 802-811 (2003).



Immunofluorescence of human RCC tumor cryosections using BH6290 (Panel A). Panel B shows staining with normal rabbit serum.



Renal carcinoma tissue stained with polyclonal carbonic anhydrase IX, BH6290

# Primary Antibodies & Ags

## Alphabetical Listing

Name	Host - Isotype	Clone	Species Reactivity				Application						Size	Cat.#	Research Area	
			Hu	Ms	Rt	Other	WB	IHC	ICC	EL	FC	IP				Other
Carnitine palmitoyl transferase-2	Rb	Pab	(+)	+	(+)									100 µg	AA5980	12-18
CAS	Ms IgG2a	30F12	+											500 µl	V02870	3
Casein	Sh	Pab								Bv				1 ml	AL8370	19
Casein	Ms IgG1	F20.14	+											500 µl	N60910	19
Casein alpha, allergenic protein	Rb	Pab												2 mg	B18460	1
Cashew nut, allergenic protein	Rb	Pab												2 mg	AY6030	1
Cask, C-term	Rb	Pab	+											100 µg	GL2750	21
Caspase 1 / ICE	Rb	Pab	+	+	+									500 µl	S47030	3
Caspase 1 / ICE	Rb	Pab	+	+	+									500 µl	S47021	3
Caspase 2	Rb	Pab	+	+										40 µg	S52820	3
Caspase 2	Rb	Pab	+	+	+		Ck							500 µl	V13510	3
Caspase 3	Rb	Pab		+										100 µl	GS9120	3
Caspase 3	Ms IgG1	31A1067	+				Rb							100 µg	GS1320	3
Caspase 3	Rb	Pab	+											100 µg	S35430	3
Caspase 3	Ms IgG2a	19	+											6 ml	S33780	3
Caspase 3	Ms IgG2a	3CSP01	+											500 µl	Q08640	3
Caspase 3	Ms IgG2a	3CSP02	+											500 µl	Q08700	3
Caspase 3	Ms IgG2a	3CSP03	+											500 µl	Q08740	3
Caspase 3	Ms IgG1	JHM62	+											500 µl	V04070	3
Caspase 3	Rb	Pab	+	+	+		Sw,Rb+							500 µl	Q08810	3
Caspase 3	Rb	Pab	+	+	+		Sw,Rb+							500 µl	S47220	3
Caspase 3	Ms IgG2a	Mab	+											200 µl	AW5570	3
Caspase 3	Rb	Pab	+											500 µl	V14960	3
Caspase 3	Rb	Pab	+											500 µl	V15480	3
Caspase 3, cleaved	Rb	Pab	+	+										100 µl	Q67850	3
Caspase 5	Rb	Pab	+	+	+		Mk,Rb+							500 µl	V10730	3
Caspase 6	Rb	Pab	+											100 µg	GS9130	3
Caspase 6	Rb	Pab	+	+	+		Sw,Rb+							500 µl	V14330	3
Caspase 6	Rb	Pab	+											500 µl	V15580	3
Caspase 6	Ms IgG1	6CSP01	+											500 µl	Q08870	3
Caspase 6	Ms IgG1	6CSP02	+											500 µl	Q08920	3
Caspase 6	Ms IgG1	6CSP03	+											500 µl	Q08990	3
Caspase 7	Ms IgG1	25B204.1	+											100 µg	GS2700	3
Caspase 7	Rb	Pab	+	+	+									500 µl	V11340	3
Caspase 7	Rb	Pab	+											100 µg	S35440	3
Caspase 7	Ms IgG2b	4G2	+											100 µg	S33800	3
Caspase 7	Ms	MCH3-5	+											50 µg	S52870	3
Caspase 7	Ms IgG1	7CSP01	+	+										500 µl	Q09060	3
Caspase 7	Ms IgG1	7CSP02	+	+										500 µl	Q09130	3
Caspase 7	Ms IgG1	7CSP03	+	+										500 µl	Q09180	3
Caspase 7	Rb	Pab	+											500 µl	Q09250	3
Caspase 7	Rb	Pab	+											500 µl	S47170	3
Caspase 7	Ms IgG1	Mab	+	+	+									100 µl	AW5580	3
Caspase 8	Rb	Pab	+											100 µg	GS9140	3
Caspase 8	Rb	Pab	+	+										100 µg	GS9150	3
Caspase 8	Ms IgG1	90A992	+											100 µg	GS1740	3
Caspase 8	Rb	Pab	+											500 µl	V13240	3
Caspase 8	Rb	Pab	+											500 µl	V13310	3
Caspase 8	Ms IgG2b	5F7	+											100 µg	S33810	3
Caspase 8	Ms IgG1	8CSP01	+											500 µl	Q09310	3
Caspase 8	Ms IgG1	8CSP02	+											500 µl	Q09360	3
Caspase 8	Ms IgG1	8CSP03	+											500 µl	Q09400	3
Caspase 8	Rb	Pab	+	+	+		Bv,Mk							500 µl	Q09470	3
Caspase 8	Ms IgG1	Mab	+											200 µl	AW5590	3
Caspase 9	Rb	Pab	+											100 µg	GS9180	3

Research Area Code

- |   |  |   |   |  |
|---|--|---|---|--|
| 1 Allergens                             | 6 Cardiac Markers and related molecules  | 11 Drugs and resistance                             | 16 Lipides/Apolipo/Lipoproteins             | 20 Neuroscience                        |
| 2 Anglo/Histogenesis                    | 7 CD Markers                             | 12 Enzymes & enzymes inhibitors                     | 17 Membrane channels and transport proteins | 21 Post translational modifications    |
| 3 Apoptosis/cell cycle                  | 8 Cell adhesion                          | 13 Hematopoietic markers                            | 18 Metabolism/Energy pathways               | 22 Signal transduction/Stress response |
| 4 Blood and serum proteins              | 9 Cytokine/Chemokine/Growth factors      | 14 Hormones/Steroids                                | 19 Miscellaneous                            | 23 Structural proteins                 |
| 5 Cancer, Hypoxia and related molecules | 10 DNA Replication/Transcription/Repairs | 15 Infectious agents related molecules & resistance |   | 24 Tags and Markers                    |

# Primary Antibodies & Ags

## Alphabetical Listing

Name	Host - Isotype	Clone	Species Reactivity				Application							Size	Cat.#	Research Area	
			Hu	Ms	Rt	Other	WB	IHC	ICC	EL	FC	IP	Other				
Caspase 9	Rb	Pab	+					+	+						100 µg	GS9160	3
Caspase 9	Rb	Pab	+					+	+						100 µl	GS9170	3
Caspase 9	Rb	Pab	+					+							100 µg	S35450	3
Caspase 9	Ms IgG1	5B4	+					+				IB			100 µg	S33820	3
Caspase 9	Ms	LAP6-96	+					+							50 µg	S52840	3
Caspase 9	Ms IgG1	9CSP01	+	+	+			+	-			-			500 µl	Q09530	3
Caspase 9	Ms IgG1	9CSP02	+	+				+				+			500 µl	Q09580	3
Caspase 9	Ms IgG1	9CSP03	+	+				+	+			+			500 µl	Q09650	3
Caspase 9	Ms IgG1	9CSP05	+	+				-	-			+			500 µl	Q09710	3
Caspase 9	Rb	Pab	+	+	+	Bv,Sh		+	+			+			500 µl	Q09750	3
Caspase 9	Rb	Pab	+					+	+						500 µl	S46060	3
Caspase 9	Ms IgG1	Mab	+					+							200 µl	AW5600	3
Caspase 9 (I16), intermed. domain 1	Rb	Pab	+					+							100 µg	AL8930	3
Caspase 9 (I20), intermed. domain 2	Rb	Pab	+					+							100 µg	AL8940	3
Caspase-9, pro-	Ms IgG1	Pab	+					+							100 µg	GS2290	3
Caspase 10	Rb	Pab	+					+							100 µg	AL8950	3
Caspase 10	Rb	Pab	+					+							100 µg	AW6420	3
Caspase 10	Rb	Pab	+					+							500 µl	GH5481	3
Caspase 10/a	Ms	63131.111	+	+				+							50 µg	S52850	3
Caspase 10/b	Rb	Pab	+	+				+							50 µg	S52860	3
Caspase 11	Rb	Pab		+				+	+						100 µg	GS9110	3
Caspase 12 (IN)	Rb	Pab	+					+	+						100 µg	AL8960	3
Caspase 12, N-term	Rb	Pab	+					+							100 µg	AL8970	3
Caspase 13	Rb	Pab	+					+							100 µg	AL8980	3
Caspase 14	Ms IgG1	70A1426	+	+				+							100 µg	GS2210	3
CASPER, see I-FLICE																	
Catalase	Rb	Pab				Bv		+	+			+			1 ml	P49020	12-18-22
Catalase	Sh	Pab	+					+	+						1 ml	295680	12-18-22
Catalase	Sh	Pab				Bv		+							1 ml	168650	12-18-22
Catalase protein	Rb	Pab	+	+				+	+						100 µl	GS9190	12-18-22
Catenin alpha	Rb	Pab	+	+		Xe		+							500 µl	GH5892	23
Catenin alpha	Ms IgG1	BDI950	+	+	+			+	+	+		+			100 µg	AL8740	23
Catenin alpha	Rb	Pab	+	+				+				IF			500 µl	Q09810	23
Catenin alpha	Rb	Pab	+	+		Xe		+	+						500 µl	S43600	23
Catenin beta	Rb	Pab	+	+				+	+			+			500 µl	AO1421	23
Catenin beta	Rb	Pab	+	+				+	+			+	IF		500 µl	Q09880	23
Catenin beta	Rb	Pab	+	+	+	Ck,Xe		+	+			+			500 µl	S43670	23
Catenin beta	Ms IgG2a	17C2	+					+							500 µl	V03770	23
Catenin beta	Ms IgG1	b-Catenin-1	+	+				+							500 µl	V08950	23
Catenin beta (aa. 769-781), C-term	Ms IgG2a	BDI080	+					+	+	+		+			100 µg	AL8650	3-22
Catenin beta, core	Ms IgG2b	BDI109	+	+	+			+	+	+		+			100 µg	AL8660	3-22
Catenin beta, dephosphorylated (27-37)	Ms IgG1	BDI480	+	+	+			+	+	+		+			100 µg	AL8690	3-22
Catenin beta, dephosphorylated (35-50)	Ms IgG1	BDI770	+	+	+			+	+	+		+			100 µg	AL8710	3-22
Catenin beta, exon 2, N-term	Ms IgG2a	BDI710	+	+	+			+		+		+			100 µg	AL8700	3-22
Catenin beta, exon 3	Ms IgG1	BDI920	+	+	+			+	+	+		+			100 µg	AL8730	3-22
Catenin beta, exon 14, C-term	Ms IgG1	BDI870	+	+	+			+	+	+		+			100 µg	AL8720	3-22
Catenin gamma	Rb	Pab	+	+	+			+	+	+		+			500 µl	GH5602	8
Cathepsin B	Rb	Pab	+					+	+						1 ml	994590	12
Cathepsin D	Rb	Pab	+					+	+						1 ml	P49030	5-12
Cathepsin D	Rb	Pab	+					+	+						1 ml	314350	5-12
Cathepsin D	Ms IgG2b	C5	+					+							500 µl	N60940	5-12
Cathepsin D	Rb	Pab	+					+							500 µl	GH5530	5-12
Cathepsin D	Ms IgG1	DB2000	+					+							500 µl	V08160	5-12
Cathepsin G	Rb	Pab	+					+	+						1 ml	P49040	12
Cathepsin G	Rb	Pab	+					+	+			IEP			1 ml	314360	12

**Species legend** : Bd : Bird, Bv : Bovine, Ck : Chicken or Hen, Ct : Feline, Dg : Canine, Dr : Drosophila, Eq : Equine, F : Fish, Fr : Frog, Ft : Ferret, GP : Guinea Pig, Gi : Goat, Hm : Hamster, Hrs : Horse, Hu : Human, Ko : Kangaroo, M : Mammalian, Mi : Mink, Mk : Monkey, Ms : Mouse, Ne : Nematode, Op : Opossum, Pl : plant, Ql : Quail, Rb : Rabbit, Rt : Rat, Sh : Sheep, Sw : Porcine, Sy Hm : Syrian Hamster, Xe : Xenopus, Ye : Yeast

**Size** : Size indicated in bold means several sizes and formats are available (sample size or bigger size, unpurified neat serum, without azide or BSA, positive control...) : contact us for more detail

**Application legend** : Bk : Blocking, CD : Cell detection, Ch : ChIP, COA : ELISA capture, Db : Dot Blot, DD : Double diffusion, EL : ELISA detection, EM : Electron Microscopy, FCM : Flow Cytometry, FIA : FluoroImmunoAssay, GS : Gel (super)shift, HA : Hemagglutination/Latex agglutination, ICC : ImmunoCytoChemistry, IEP : Immunoelectrophoresis, IF : Immunofluorescence, IHC : ImmunoHistoChemistry, IP : Immunoprecipitation/Immunopurification, ISH : In Situ Hybridization, KA : Kinase assay, LF : Lateral flow, Neph : Nephelometry, Neut : Neutralizing, RIA : RadioImmunoassay, RID : Radial Immunodiffusion, SB : Southern Blot, TIA : Turbidimetry

**Name** : Prefixes as 'alpha', 'D1-', 'Pro'-... are not considered for the alphanumerical sorting, and often included after the main name.

(+) : Expected species cross-reactivities based on immunogen sequence homology \_ Expected application suitability.

# Primary Antibodies & Ags

## Alphabetical Listing

Name	Host - Isotype	Clone	Species Reactivity				Application						Size	Cat.#	Research Area
			Hu	Ms	Rt	Other	WB	IHC	EL	FC	IP	Other			
Cathepsin G	Sh	Pab	+					+					1 ml	N97880	12
Cathepsin G	Ms IgG1	19C3	+					+					500 µl	V06530	12
Cathepsin H	Rb	Pab	+						+				1 ml	P49050	12
Cathepsin L	Rb	Pab	+					+	+				1 ml	994580	12
Caveolin	Rb	Pab			+			+	+				100 µg	GS9200	22
CBF beta	Ms IgG1	141,4,1	+	+				+					100 µl	GS1350	5
Cbl, C-term	Rb	Pab	+					+	+	+			100 µg	GK4160	21
Cbl, N-term	Rb	Pab	+					+	+	+			100 µg	GK4150	21
CBX, N-term	Rb	Pab	+					+	+	+			100 µg	GK9420	23-10
CBX4, C-term	Rb	Pab	+					+	+				100 µg	GK9430	10
CBX8, C-term	Rb	Pab	+					+	+	+			100 µg	GK9450	10
CBX8, N-term	Rb	Pab	+					+	+				100 µg	GK9440	10
CCBP2, C-term	Rb	Pab	+	+				+	+				100 µg	GK6200	22
CCBP2, N-term	Rb	Pab	+					+	+				100 µg	GK6190	22
CCK4, C-term	Rb	Pab	+					+	+	+			100 µg	BG0580	21
CCK4, N-term	Rb	Pab	+					+	+	+			100 µg	BB3040	21
CCL19, C-term	Rb	Pab	+						+				100 µg	GK6220	9
CCL19, N-term	Rb	Pab	+							+			100 µg	GK6210	9
CCR5, N-term	Rb	Pab	+					+					100 µg	AL9060	9
CCR5, N-term	Ms IgG2a	12D1	+					+		+			200 µg	O08690	9
CCR8, extracellular loop	Rb	Pab	+					+					100 µg	AL9010	9
CD1	Ms IgG2a	66II2C7	+						+	+		IF	500 µl	N60970	13-7
CD1a	Ms IgG1	CBT6	+							+	+		200 µg	N98870	7
CD1a	Ms	1CA03								+			500 µl	Q11240	13-7
CD1a	Ms IgG1	O10	+						+				500 µl	V07850	13-7
CD1a	Ms IgG1	MTB1	+						+				500 µl	N61890	13-7
CD1a (Langerhans Cells)	Ms IgG1	BL 6	+						+	+			200 µg	O18260	7
CD1b	Ms IgG1	SN13	+					+	+	+			500 µl	Q11280	13-7
CD1b	Ms IgM	100-1A5	+					+	+			IF	500 µl	N61920	13-7
CD1c	Ms IgG2a	PHM-3	+										100 µg	O06160	7
CD1c, 43kD	Ms IgG1	L161	+					+	+				200 µg	O18270	7
CD1d	Ms IgG1	NOR3.2	+					+	-				200 µg	O06170	7
CD2	Rb	Pab	+					+					500 µl	GH6263	7
CD2	Ms IgG2a	G11	+							+			200 µg	O00740	7
CD2	Ms IgG1	6F10.3	+					+	+				200 µg	O10340	7
CD2	Rt IgG2a	39C1.5	+					+	+				200 µg	O10350	7
CD2	Ms IgG2a	LT2	+										1 mg	O22160	7
CD2	Ms IgG1	2C02	+					+					500 µl	N61970	13-7
CD2	Ms IgG2b	Huly-m1	+			Ct		+	+			IF	500 µl	N61940	13-7
CD2 (Hu T & NK cells)	Ms IgG2b	M504501	+										200 µg	P43430	7
CD2 -Biotin	Ms IgG2a	G11	+							+			200 µg	O06180	7
CD2 -FITC	Ms IgG2a	G11	+							+			200 µg	O06190	7
CD2 -FITC	Rt IgG2a	39C1.5	+					+	+				100 tests	O19010	7
CD2 -PE	Ms IgG2a	G11	+							+			200 µg	O15980	7
CD2 -PE	Rt IgG2a	39C1.5	+					+	+				100 tests	O21980	7
CD3	Ms IgG2b	M42251	+					+	+				200 µg	P43450	7
CD3	Rb	Pab	+			Dg,Hrs+		+	+				500 µl	N62425	13-7
CD3	Ms IgG2a	X35	+					+	+				200 µg	O10430	7
CD3	Ms IgG1	UCHT1	+								+		100 tests	O04430	7
CD3	Ms IgG2a	Cris-7	+					+			+	IF	200 µg	O02610	7
CD3	Rt IgG2a	KT 3			+					+			500 µg	O08740	7
CD3	Ms IgG2a	WT32	+									IF	1 ml	N96790	7
CD3	Ms IgG2b	LT3	+										1 mg	O16440	7
CD3	Ms IgG1	6B10	+	+	+			+		+			500 µl	Q41270	13-7
CD3	Ms IgG2a	PS1	+					+					500 µl	N62480	13-7
CD3	Ms IgG3	RIV9	+					+		+		IF	500 µl	N62530	13-7
CD3	Ms IgG2a	CRIS7	+			Mk		+	+			IF	500 µl	N62550	13-7
CD3	Ms IgG1	UCHT-1	+					+	+			IF	500 µl	N62510	13-7
CD3	Rb	Pab	+					+					500 µl	S43020	13-7
CD3	Rb	Pab	+					+	+				500 µl	N62440	7
CD3 (T-Cell Marker)	Rb IgG	SP7	+			Dg,Hrs+		+					500 µl	V17150	13-7
CD3 -Biotin	Ms IgG1	UCHT-1	+							+			200 µg	O06240	7
CD3 -Biotin	Ms IgG1	UCHT1	+							+			200 µg	O18320	7
CD3 epsilon	Hm IgG	500-A2			+			+	+			IF	500 µg	O03860	7

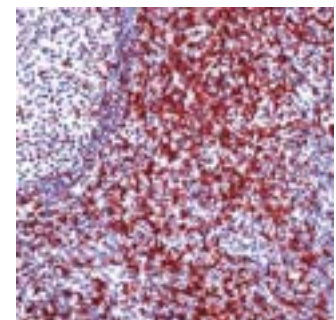
Name	Host - Isotype	Clone	Species Reactivity				Application						Size	Cat.#	Research Area	
			Hu	Ms	Rt	Other	WB	IHC	ICC	EL	FC	IP				Other
CD3 epsilon	Ms IgG1	F7.2.38	+				+						500 µl	V09000	13-7	
CD3 epsilon -Biotin	Hm IgG	500-A2		+				+				IF	500 µg	O14900	7	
CD3 -FITC	Ms IgG1	UCHT-1	+										200 µg	O06250	7	
CD3 -FITC	Ms IgG1	UCHT1	+										100 tests	O19070	7	
CD3 -FITC	Rt IgG2a	KT 3		+									100 tests	O14360	7	
CD3 -PE	Ms IgG1	UCHT-1	+					+					200 µg	O14740	7	
CD3 T lymphocyte	Ms IgG1	UCHT1	+									+	IF	200 µg	324772	7
CD4	Ms IgG1	PE2			+								500 µl	O12690	13-7	
CD4	Ms IgG1	RPA-T4	+										200 µg	O00760	7	
CD4	Ms IgG1	LT4	+										1 mg	O22170	7	
CD4	Ms IgG1	4B12	+						+				500 µl	S39550	13-7	
CD4	Ms IgG1	KT69-7	+						+			IF	500 µl	N62950	13-7	
CD4	Ms IgG1	1F6	+						+				500 µl	N62980	13-7	
CD4	Ms IgG2a	RIV6	+			Mk			+			IF	500 µl	N63010	13-7	
CD4	Ms IgG2a	RIV7	+			Mk			+			IF	500 µl	N63030	13-7	
CD4	Ms IgM	JOU4B7F4	+						+			IF	500 µl	N63050	13-7	
CD4	Ms IgG2a	EDU-2	+						+				500 µl	N63070	13-7	
CD4 (T helper/inducer subset)	Ms IgG1	M504505	+						+				200 µg	P43460	7	
CD4 / L3T4	Rt IgG2b	GK1.5		+				+				+	IF	500 µg	O03870	7
CD4 / L3T4 -Biotin	Rt IgG2b	GK1.5		+								+	IF	500 µg	O14100	7
CD4 / L3T4 -FITC	Rt IgG2b	GK1.5		+								+	Bk,IF	500 µg	O14910	7
CD4 / L3T4 -PE	Rt IgG2b	GK1.5		+								+	Bk,IF	100 µg	O26620	7
CD4 -Biotin	Ms IgG1	RPA-T4	+									+		200 µg	O06280	7
CD4 -Biotin	Ms IgG1	13B8.2	+					+	+	+		+	Bk	200 µg	O18340	7
CD4 -FITC	Ms IgG1	RPA-T4	+									+		200 µg	O06290	7
CD4 -FITC	Ms IgG1	13B8.2	+					+	+	+		+	Bk	100 tests	O19110	7
CD4 -PE	Ms IgG1	RPA-T4	+									+		200 µg	O15990	7
CD4 -Phycocerythrin	Ms IgG1	13B8.2	+					+	+	+		+	Bk	100 tests	O22010	7
CD4, gp 55kD	Ms IgG1	13B8.2	+					+	+	+		+	Bk	200 µg	O10490	7
CD4, gp 55kD	Ms IgG2a	BL4	+									+	Bk	200 µg	O10480	7
CD5	Rb	Pab	+						+					500 µl	V16170	13-7
CD5	Rb IgG	SP19	+						+	+				500 µl	GH3652	13-7
CD5	Ms IgG1	UCHT-2	+									+		200 µg	O00810	7
CD5	Ms IgG2a	BL1a	+									+	+	200 µg	O10540	7
CD5	Ms IgG1	LT1	+										IF	1 mg	O22200	7
CD5	Ms IgM	NKI-CD5	+						+			+	IF	500 µl	N64010	13-7
CD5	Ms IgG1	B-B8	+						+			+	IF	500 µl	N64030	13-7
CD5	Ms IgG2a	CRIS-1	+			Mk			+			+	IF	500 µl	N64050	13-7
CD5	Ms IgG1	CD5/54/F6	+						+					500 µl	V06780	13-7
CD5 (T cells)	Ms IgG1	M504507	+											200 µg	P43490	7
CD5 -Biotin	Ms IgG1	UCHT-2	+						+			+		200 µg	O06460	7
CD5 -FITC	Ms IgG1	UCHT-2	+									+		200 µg	O06470	7
CD5 -FITC	Ms IgG2a	BL1a	+									+	+	100 tests	O19170	7
CD5	Ms IgG1	4C7	+						+					500 µl	N63980	13-7
CD5 -PE	Ms IgG1	UCHT-2	+									+		200 µg	O06480	7
CD5 -PE	Ms IgG2a	BL1a	+											100 tests	O22030	7

### CD5

- ◆ Specificity : CD5
- ◆ Catalog number : **N63980**
- ◆ Host and isotype : Mouse IgG1k
- ◆ Species reactivity : Human (rat negative)
- ◆ Applications and suggested dilution :
  - Immunohistochemistry (formalin/paraffin only)
  - 1:40-80 (30min., RT)

#### Key References :

1. Berezowski K; et al. American Journal of Clinical Pathology, 1996 Oct, 106(4):483-6.2. Ferry JA; et al. American Journal of Clinical Pathology, 1996 Jan, 105(1):31-7.



Formalin-fixed, paraffin-embedded human tonsil stained with antibody N63980 using peroxidase-conjugate and AEC chromogen. Note intense cell membrane staining of T cells

# Primary Antibodies & Ags

## Alphabetical Listing

Name	Host - Isotype	Clone	Species Reactivity				Application						Size	Cat.#	Research Area	
			Hu	Ms	Rt	Other	WB	IHC	ICC	EL	FC	IP				Other
CD6	Ms IgG1	6C02	+					+						500 µl	N64480	13-7
CD6	Ms IgG1	SPV-L14	+					+		+		IF		500 µl	N64450	13-7
CD7	Ms IgG2a	8H8.1	+					+		+		IF		200 µg	O10560	7
CD7	Ms IgG2a	LT7	+					+	+					1 mg	O22210	7
CD7	Ms IgG1	7C03	+					+						500 µl	N64740	13-7
CD7	Ms IgG2b	CBC.37	+					+						500 µl	V09050	13-7
CD7	Ms IgG2a	Huly-m2	+							+		Bk,IF		500 µl	N64690	13-7
CD7	Ms IgG1	124.1D1	+					+		+		IF		500 µl	N64710	13-7
CD7	Rb	Pab	+						+					500 µl	GH5490	7
CD7 (T cells and NK cells)	Ms IgG2a	M504509	+											200 µg	P43510	7
CD7 -PE	Ms IgG2a	8H8.1	+											100 tests	O22050	7
CD8	Rb	Pab	+						+					500 µl	V16220	13-7
CD8	Rb IgG	SP16	+						+					500 µl	V17540	7
CD8	Ms IgG1	12.C7					Rb				+			200 µg	N99350	7
CD8	Ms IgG1	LT8	+											1 mg	O22220	7
CD8	Ms IgG1	C8/144B	+						+					500 µl	V10050	13-7
CD8	Ms IgG1	RIV11	+							+		IF		500 µl	N65020	13-7
CD8	Ms IgM	HO30-1.2	+						+		+	IF		500 µl	Q14650	13-7
CD8	Ms IgG2b	4B11	+						+					500 µl	V08800	13-7
CD8 (Suppressor/Cytotoxic T cell)	Ms IgG1	M504511	+						+	+				200 µg	P43530	7
CD8 beta	Ms IgG2a	2ST8.5H7	+						+	+	+			200 µg	O17110	7
CD8 -Biotin	Ms IgG2a	UCHT-4	+							+				200 µg	O06660	7
CD8 -FITC	Ms IgG2a	UCHT-4	+							+				200 µg	O06670	7
CD8 -PE	Ms IgG2a	UCHT-4	+						+	+				200 µg	O14830	7
CD8a	Ms IgG1	143.44	+						+	+		IF		500 µl	N65140	13-7
CD8a (Ly2)	Rt IgG2a	53-6.72		+					+	+	+			500 µg	O14130	7
CD8a (Ly2) -Biotin	Rt IgG2a	53-6.72		+					+	+	+			500 µg	O14120	7
CD8a (Ly2) -FITC	Rt IgG2a	53-6.72		+					+	+	+			500 µg	O14920	7
CD8a (Ly2) -PE	Rt IgG2a	53-6.72		+						+	+	Bk,IF		100 µg	O26650	7
CD9	Ms IgG1	ALB 6	+						+		+			200 µg	O10600	7
CD9	Ms IgG2b	MM2/57	+								+			200 µg	N99380	7
CD9	Ms IgG1	9C01	+						+					500 µl	N65170	13-7
CD9	Ms IgG1	SN4	+						+	+	+			500 µl	Q14770	13-7
CD10	Ms IgG1	SN5c	+						+	+	+			500 µl	Q09970	13-7
CD10	Ms IgG1	FR4.D11	+						+	+		IF		500 µl	N60990	13-7
CD10	Ms IgG1	56C6	+			+			+					500 µl	N61020	13-7
CD10	Ms IgG2b	10C04	+						+	+		IF		500 µl	Q10030	13-7
CD10 Calla	Ms IgG1	SJ25-1B4	+							+				200 µg	O00650	7
CD10 Calla -FITC	Ms IgG1	SJ25-1B4	+							+				200 µg	O05940	7
CD10 Calla, gp 100 kD	Ms IgG1	ALB1	+						+	+				200 µg	O10230	7
CD10 -FITC	Ms IgG2a	ALB2	+							+				100 tests	O18930	7
CD11a	Rt IgG2a	I21/7		+						+	+			500 µg	O07840	7
CD11a	Ms IgG2b	DF1524	+							+		IF		500 µl	N61430	13-7
CD11a	Ms IgG2b	CRIS-3	+						+	+		IF		500 µl	N61450	13-7
CD11a -Biotin	Rt IgG2a	I21/7		+						+	+			500 µg	O17660	7
CD11a -FITC	Rt IgG2a	I21/7		+						+	+			500 µg	O18710	7
CD11a LFA-1, alpha subunit	Ms IgG2a	38	+							+				200 µg	O00670	7
CD11a LFA-1, alpha subunit -Biotin	Ms IgG2a	38	+							+				200 µg	O05990	7
CD11a LFA-1, alpha subunit -FITC	Ms IgG2a	38	+							+				200 µg	O06000	7
CD11a LFA-1, alpha subunit -PE	Ms IgG2a	38	+							+				200 µg	O14660	7
CD11a -PE	Rt IgG2a	I21/7		+						+	+			100 µg	N97120	7
CD11b	Ms IgG1	BEAR-1	+						+	+				200 µg	O10240	7
CD11b	Ms IgG2a	OX-42				+								500 µg	S34500	7
CD11b	Ms IgG1	198					Rb		+	+				200 µg	N98760	7
CD11b	Ms IgG1	LM11	+											1 mg	O22140	7

### Research Area Code

- |   |  |   |   |  |
|---|--|---|---|--|
| 1 Allergens                             | 6 Cardiac Markers and related molecules  | 11 Drugs and resistance                             | 16 Lipides/Apolipo/Lipoproteins             | 20 Neuroscience                        |
| 2 Anglo/Histogenesis                    | 7 CD Markers                             | 12 Enzymes & enzymes inhibitors                     | 17 Membrane channels and transport proteins | 21 Post translational modifications    |
| 3 Apoptosis/cell cycle                  | 8 Cell adhesion                          | 13 Hematopoietic markers                            | 18 Metabolism/Energy pathways               | 22 Signal transduction/Stress response |
| 4 Blood and serum proteins              | 9 Cytokine/Chemokine/Growth factors      | 14 Hormones/Steroids                                | 19 Miscellaneous                            | 23 Structural proteins                 |
| 5 Cancer, Hypoxia and related molecules | 10 DNA Replication/Transcription/Repairs | 15 Infectious agents related molecules & resistance |   | 24 Tags and Markers                    |

# Primary Antibodies & Ags

## Alphabetical Listing

Name	Host - Isotype	Clone	Species Reactivity				Application						Size	Cat.#	Research Area
			Hu	Ms	Rt	Other	WB	IHC	EL	FC	IP	Other			
CD11b / MAC-1	Ms IgG1	M504514	+										200 µg	<b>P43410</b>	7
CD11b / MAC-1	Ms IgG1	44	+							+			200 µg	<b>O00680</b>	7
CD11b / MAC-1	Rt IgG2b	M1/70		+							+		500 µg	<b>O07850</b>	7
CD11b / MAC-1	Rt IgG2b	M1/70.15.1		+								+	500 µg	<b>O15860</b>	7
CD11b / MAC-1 -Biotin	Ms IgG1	44	+									+	200 µg	<b>983880</b>	7
CD11b / MAC-1 -Biotin	Rt IgG2b	M1/70		+								+	500 µg	<b>O17670</b>	7
CD11b / MAC-1 -FITC	Ms IgG1	44	+									+	200 µg	<b>O06010</b>	7
CD11b / MAC-1 -FITC	Rt IgG2b	M1/70		+								+	500 µg	<b>O18720</b>	7
CD11b / MAC-1 -FITC	Ms IgG1	Bear1	+						+				100 tests	<b>O18950</b>	7
CD11b / MAC-1 -PE	Ms IgG1	44	+									+	200 µg	<b>O14670</b>	7
CD11b / MAC-1 -PE	Rt IgG2b	M1/70		+								+	100 µg	<b>N97130</b>	7
CD11c	Ms IgG1	HC1/1	+									+	100 µg	<b>N98770</b>	7
CD11c gp 150/95	Ms IgG1	3.9	+						+		+		200 µg	<b>O00690</b>	7
CD11c gp 150/95 -Biotin	Ms IgG1	3.9	+						+		+		200 µg	<b>O06020</b>	7
CD11c gp 150/95 -FITC	Ms IgG1	3.9	+						+		+		200 µg	<b>O06030</b>	7
CD11c gp 150/95 -PE	Ms IgG1	3.9	+						+		+		200 µg	<b>O14680</b>	7
CD13	Ms IgG1	SJ1D1	+						+		+		200 µg	<b>O10250</b>	7
CD13	Ms IgG1	13C03	+					+	+				<b>500 µl</b>	<b>N61520</b>	13-7
CD13	Ms IgG1	B-F10	+					+				IF	<b>500 µl</b>	<b>N61470</b>	13-7
CD13	Ms IgG2a	3D8	+					+				Bk,IF	<b>500 µl</b>	<b>N61490</b>	13
CD13 -FITC	Ms IgG1	SJ1D1	+								+	+	100 tests	<b>O18960</b>	7
CD13 Myeloid Cells	Ms IgG	22A5	+								+		200 µg	<b>O00700</b>	7
CD13 Myeloid Cells -Biotin	Ms IgG	22A5	+								+		200 µg	<b>O06050</b>	7
CD13 Myeloid Cells -FITC	Ms IgG	22A5	+								+		200 µg	<b>O06060</b>	7
CD13 Myeloid Cells -PE	Ms IgG	22A5	+								+		200 µg	<b>O14690</b>	7
CD14	Ms IgG2a	RM052	+						+		+		200 µg	<b>O15970</b>	7
CD14	Ms IgG2a	14C02	+						+				<b>500 µl</b>	<b>N61600</b>	13-7
CD14	Ms IgG2a	UCHM-1	+								+		<b>500 µl</b>	<b>Q10860</b>	13-7
CD14	Ms IgG1	BA-8	+								+		<b>500 µl</b>	<b>N61570</b>	13-7
CD14 -FITC	Ms IgG2a	RM052	+						+		+		100 tests	<b>O18970</b>	7
CD14 Monocytes	Ms IgG2a	UCHM-1	+								+		200 µg	<b>O00710</b>	7
CD14 Monocytes -Biotin	Ms IgG2a	UCHM-1	+								+		200 µg	<b>O06080</b>	7
CD14 Monocytes -FITC	Ms IgG2a	UCHM-1	+								+		200 µg	<b>O06090</b>	7
CD14 Monocytes -PE	Ms IgG2a	UCHM-1	+								+		200 µg	<b>O14700</b>	7
CD14 -PE	Ms IgG2a	RM052	+						+		+		100 tests	<b>O21950</b>	7
CD15	Ms IgM	80H5	+						+				6 ml	<b>N94180</b>	7
CD15	Ms IgM	80H5	+								+		200 µg	<b>O10260</b>	7
CD15	Ms IgM	MMA	+						+		+		<b>500 µl</b>	<b>Q10950</b>	13-7
CD15	Ms IgM	FR4A5	+						+				<b>500 µl</b>	<b>N61670</b>	13-7
CD15	Ms IgM	15C02	+						+				<b>500 µl</b>	<b>N61700</b>	13-7
CD15 Granulocytes -Biotin	Ms IgM	TG1	+								+		200 µg	<b>O06120</b>	7
CD15 Granulocytes -FITC	Ms IgM	TG1	+								+		200 µg	<b>O06130</b>	7
CD15 Granulocytes -PE	Ms IgM	TG1	+								+		200 µg	<b>O14710</b>	7
CD16	Ms IgG1	3G8	+						+		+		200 µg	<b>O10290</b>	7
CD16	Ms IgG1	LNK16	+										1 mg	<b>O22150</b>	7
CD16	Ms IgG2a	16C02	+						+				<b>500 µl</b>	<b>N61770</b>	13-7
CD16	Ms IgG2a	HUNK2	+						-		+	IF	<b>500 µl</b>	<b>N61740</b>	13-7
CD16 (NK cells)	Ms IgG1	M504517	+										200 µg	<b>P43420</b>	7
CD16 -PE	Ms IgG1	3G8	+						+		+		100 tests	<b>O21960</b>	7
CD16b -FITC	Ms IgM	1D3	+								+		100 tests	<b>O18980</b>	7
CD18	Ms IgG2a	68-5A5	+						+			Bk,IF	<b>500 µl</b>	<b>N61840</b>	13-7
CD18 / LFA-1	Ms IgG1	7E4	+						+		+		200 µg	<b>O10300</b>	7
CD18 / LFA-1	Ms IgG1	MEM-48	+						+		+		100 µg	<b>O08020</b>	7
CD18 / LFA-1 beta	Rt IgG2a	C71/16		+					+		+		500 µg	<b>O07860</b>	7
CD18 / LFA-1 beta -Biotin	Rt IgG2a	C71/16		+					+		+		500 µg	<b>O17680</b>	7

**Species legend** : Bd : Bird, Bv : Bovine, Ck : Chicken or Hen, Ct : Feline, Dg : Canine, Dr : Drosophila, Eq : Equine, F : Fish, Fr : Frog, Ft : Ferret, GP : Guinea Pig, Gi : Goat, Hm : Hamster, Hrs : Horse, Hu : Human, Ko : Kangaroo, M : Mammalian, Mi : Mink, Mk : Monkey, Ms : Mouse, Ne : Nematode, Op : Opossum, Pl : plant, Ql : Quail, Rb : Rabbit, Rt : Rat, Sh : Sheep, Sw : Porcine, Sy Hm : Syrian Hamster, Xe : Xenopus, Ye : Yeast

**Size** : Size indicated in bold means several sizes and formats are available (sample size or bigger size, unpurified neat serum, without azide or BSA, positive control...) : contact us for more detail

**Application legend** : Bk : Blocking, CD : Cell detection, Ch : ChIP, COA : ELISA capture, Db : Dot Blot, DD : Double diffusion, EL : ELISA detection, EM : Electron Microscopy, FCM : Flow Cytometry, FIA : FluoroImmunoAssay, GS : Gel (super)shift, HA : Hemagglutination/Latex agglutination, ICC : ImmunoCytoChemistry, IEP : Immunoelectrophoresis, IF : Immunofluorescence, IHC : ImmunoHistoChemistry, IP : Immunoprecipitation/Immunopurification, ISH : In Situ Hybridization, KA : Kinase assay, LF : Lateral flow, Neph : Nephelometry, Neut : Neutralizing, RIA : RadioImmunoassay, RID : Radial Immunodiffusion, SB : Southern Blot, TIA : Turbidimetry

**Name** : Prefixes as 'alpha', 'D1-', 'Pro-',... are not considered for the alphanumerical sorting, and often included after the main name.

(+) : Expected species cross-reactivities based on immunogen sequence homology \_ Expected application suitability.

# Primary Antibodies & Ags

## Alphabetical Listing

Name	Host - Isotype	Clone	Species Reactivity				Application						Size	Cat.#	Research Area
			Hu	Ms	Rt	Other	WB	IHC	ICC	EL	FC	IP			
CD18 / LFA-1 beta -FITC	Rt IgG2a	C71/16		+				+		+	+		500 µg	O19950	7
CD18 / LFA-1 beta -PE	Rt IgG2a	C71/16		+				+		+	+		100 µg	O00300	7
CD19	Ms IgG1	J4.119	+							+			100 tests	889390	7
CD19	Ms IgG1	J4.119	+					+		+			200 µg	O10310	7
CD19	Ms IgG1	19C02	+					+		+	IF		500 µl	Q11160	13-7
CD19 -FITC	Ms IgG1	J4.119	+							+			100 tests	O19000	7
CD19 -PE	Ms IgG1	J4.119	+							+			100 tests	889400	7
CD19, Pan B Cells	Ms IgG1	SJ25-C1	+							+			200 µg	O00730	7
CD19, Pan B Cells	Ms IgG1	BC-3	+					+		+			1 ml	GG1260	7
CD19, Pan B Cells -Biotin	Ms IgG1	SJ25-C1	+							+			200 µg	441060	7
CD19, Pan B Cells -FITC	Ms IgG1	SJ25-C1	+							+			200 µg	O06150	7
CD19, Pan B Cells -PE	Ms IgG1	SJ25-C1	+							+			200 µg	O14720	7
CD20	Rb	Pab	+					+	+		+		500 µl	V16420	13-7
CD20	Ms IgG2a	Mab	+							+			200 µg	O10360	7
CD20	Ms IgG1	MEM-97	+							+	+		100 µg	AL8810	7
CD20	Ms IgG2a	L26	+					+		+	IF		500 µl	N62050	13-7
CD20	Ms IgG2a	B9E9	+					+		+	+	IF	500 µl	N62000	13-7
CD20	Ms IgG1	93-1B3	+					+		+	IF		500 µl	N62020	13-7
CD20 / Cy	Ms IgM	BC1	+					+					100 µg	N98890	7
CD21	Ms IgG1	LB21	+										1 mg	O13520	7
CD21	Ms IgG2a	21C02	+					+					500 µl	N62110	13-7
CD21	Ms IgG1	FR5A10	+					+		+	IF		500 µl	N62080	13-7
CD21 (Hu B cell)	Ms IgG1	M504520	+										200 µg	P43440	7
CD22	Ms IgG1	RFB-4	+							+			200 µg	O00750	7
CD22 / BL-CAM	Ms IgG1	22C04	+					+					500 µl	N62170	13-7
CD22 -Biotin	Ms IgG1	RFB-4	+							+			200 µg	O06200	7
CD22 -FITC	Ms IgG1	RFB-4	+							+			200 µg	O06210	7
CD22 -FITC	Ms IgG1	SJ10.1H11	+					+		+	+		100 tests	O19030	7
CD22 -PE	Ms IgG1	RFB-4	+							+			200 µg	O14730	7
CD23	Rb IgG	SP23	+					+					500 µl	GH3621	7
CD23	Ms IgG3	Tu1	+					+		+	IF		200 µg	N98900	7
CD23	Ms IgG1	1B12	+					+					500 µl	N62210	13-7
CD23	Rb	Pab	+	+	+	Rb,Bv+	+	+			IF		500 µl	GH6273	13-7
CD23 -FITC	Ms IgG1	9P25	+							+	+		100 tests	O19040	7
CD23 -FITC	Ms IgG1	BU38	+					+					100 tests	N90520	7
CD23 -HRP	Ms IgG1	BU38	+							+	IF		200 µl	N90530	7
CD24	Ms IgG1	ALB9	+										200 µg	O10400	7
CD24	Ms IgG1	SN3	+					+	+	+			500 µl	Q11520	13-7
CD24	Ms IgM	24C02	+					+		+			500 µl	Q11560	13-7
CD24 (Nectadrin)	Rt IgG	79		+				+		+			500 µg	N99550	7
CD24 -PE	Ms IgG1	ALB9	+										100 tests	O21550	7
CD25	Ms IgG2a	B1.49.9	+										200 µg	O10420	7
CD25	Rt IgG2a	33B3.1	+					+		+			200 µg	O10410	7
CD25	Ms IgG2a	B1.49.9	+							+			100 tests	O04410	7
CD25 / IL-2 Receptor a	Ms IgG2b	25C04	+					+					500 µl	N62250	13-7
CD25 / IL-2 Receptor a	Ms IgG1	IL2R.1	+					+		+	IF		500 µl	877041	13-7
CD25 / IL-2 Receptor a	Ms IgG1	143-13	+					+		+	IF,Bk		500 µl	N62300	13-7
CD25 -FITC	Ms IgG2a	B1.49.9	+							+			100 tests	O19060	7
CD25 -PE	Ms IgG2a	B1.49.9	+							+			100 tests	O21990	7
CD26 / DPP IV	Ms IgG2b	202.36	+		+					+	IF		500 µl	N62320	13-7
CD27	Ms IgG1	137B4	+					+					500 µl	S38430	13-7
CD27	Ms IgG3	203.6	+					+		+	IF		500 µl	N62340	13-7
CD28	Hm IgG	37.58		+						+			500 µg	O14080	7
CD28	Ms IgG1	CD28.2	+							+			100 tests	O10010	7
CD28	Ms IgG1	R9/17				Rb				+			200 µg	N98950	7

Immunologicals

A.56

interchim

Research Area Code

- |   |  |   |   |  |
|---|--|---|---|--|
| 1 Allergens                             | 6 Cardiac Markers and related molecules  | 11 Drugs and resistance                             | 16 Lipides/Apolipo/Lipoproteins             | 20 Neuroscience                        |
| 2 Anglo/Histogenese                     | 7 CD Markers                             | 12 Enzymes & enzymes inhibitors                     | 17 Membrane channels and transport proteins | 21 Post translational modifications    |
| 3 Apoptosis/cell cycle                  | 8 Cell adhesion                          | 13 Hematopoietic markers                            | 18 Metabolism/Energy pathways               | 22 Signal transduction/Stress response |
| 4 Blood and serum proteins              | 9 Cytokine/Chemokine/Growth factors      | 14 Hormones/Steroids                                | 19 Miscellaneous                            | 23 Structural proteins                 |
| 5 Cancer, Hypoxia and related molecules | 10 DNA Replication/Transcription/Repairs | 15 Infectious agents related molecules & resistance |   | 24 Tags and Markers                    |

# Primary Antibodies & Ags

## Alphabetical Listing

Name	Host - Isotype	Clone	Species Reactivity				Application						Size	Cat.#	Research Area
			Hu	Ms	Rt	Other	WB	IHC	EL	FC	IP	Other			
CD28 -Biotin	Hm IgG	37.58		+								+	500 µg	O17140	7
CD28 -FITC	Ms IgG1	CD28.2	+									+	100 tests	O20700	7
CD28 -PE	Hm IgG	37.58		+								+	100 µg	N91700	7
CD28 T-lymphocyte	Rt IgG2b	YTH913.12	+					+				+	100 µg	O13900	7
CD29	Ms IgG1	Lia1/2	+									+	200 µg	O18310	7
CD29	Ms IgG1	29C02	+					+				+	500 µl	Q11700	2-13-7
CD29	Ms IgG1	29C03	+					+				+	500 µl	N62390	2-13-7
CD29	Ms IgG1	29C04	+					+				+	500 µl	Q11740	2-13-7
CD29	Ms IgG1	4B7R	+			Sw		+				+	500 µl	845281	2-13-7
CD29 -FITC	Ms IgG2a	K20	+									+	100 tests	O20710	7
CD30	Ms IgG1	HRS4	+					+				+	200 µg	O13400	7
CD30	Ms IgG1	Ber-H2	+					+				+	500 µl	N62580	13-7
CD30 (Reed-Sternberg Cell Marker)	Ms IgG1	15B3	+					+				+	500 µl	V02920	13-7
CD30 (Reed-Sternberg Cell Marker)	Ms IgG1	HRS4	+					+				+	500 µl	V07920	13-7
CD31 / PECAM	Ms IgG1	WM59	+									+	100 µg	O06260	7
CD31 / PECAM	Ms IgG1	HC1/6	+									+	200 µg	734820	7
CD31 / PECAM	Ms IgG2b	VM64	+					+	+			+	1 ml	O04940	7
CD31 / PECAM -FITC	Ms IgG1	5.6E	+									+	100 tests	O20720	7
CD31 / PECAM-1	Ms IgG1	1A10	+					+				+	500 µl	V08710	2-13-7
CD31 / PECAM-1	Ms IgG1	JC/70A	+					-	+			+	500 µl	V09960	2-13-7
CD31 / PECAM-1	Ms IgG1	158-2B3	+					+	+			+	500 µl	798211	2-13-7
CD31 / PECAM-1	Ms IgG1	31C03	+					+				+	500 µl	Q12030	2-13-7
CD32 / CD16	Rt IgG1	YT1.24		+								+	500 µg	O14090	7
CD32 / CD16 -Biotin	Rt IgG1	YT1.24		+								+	500 µg	O17150	7
CD32 / CD16 -FITC	Rt IgG1	YT1.24		+								+	500 µg	O19960	7
CD32 / CD16 -PE	Rt IgG1	YT1.24		+								+	100 µg	N97630	7
CD32 / Fcγ Receptor II	Ms IgG1	7.30	+									+	500 µl	N62660	13-7
CD32 Fc R2 gp40 kDa	Ms IgG2a	2E1	+									+	200 µg	O10440	7
CD33	Rb	Pab										+	100 µg	AW6440	7-8
CD33 -FITC	Ms IgG1	D3HL60.251	+									+	100 tests	O22990	7
CD33 -PE	Ms IgG1	D3HL60.251	+									+	100 tests	O23240	7
CD34	Ms IgG1	Immu-133	+										1 mg	O23220	7
CD34	Ms IgG1	34C02	+									+	500 µl	Q12090	2-13-7
CD34 -PE	Ms IgG1	QBEND10	+										100 tests	O21570	7
CD34 -PE	Ms IgG1	Immu-133	+									+	100 tests	O22660	7
CD34, Type II	Ms IgG1	QBEnd/10	+									+	500 µl	Q12190	2-13-7
CD35	Ms IgG1	J3D3	+									+	200 µg	O20220	7
CD35 / CR1	Ms IgG1	KuN241	+									+	500 µl	N62720	13-7
CD35 / CR1	Ms IgG1	E11	+			Mk						+	500 µl	N62760	13-7
CD35 -FITC	Ms IgG1	E11	+									+	100 tests	O04440	7
CD35 -FITC	Ms IgG1	J3D3	+									+	100 tests	O20730	7
CD36	Ms IgG1	FA6.152	+									+	200 µg	O18330	7
CD36	Ms IgM	SMO	+									+	200 µg	O02630	7
CD36 -FITC	Ms IgG1	FA6.152	+									+	100 tests	O20740	7
CD36 GPIIb / GPIV	Ms IgG2b	1A7	+									+	500 µl	843731	2-13-7
CD36 GPIIb / GPIV	Ms IgG1	1E8	+									+	500 µl	N62790	2-13-7
CD36 GPIIb / GPIV	Ms IgG2a	185-1G2	+									+	500 µl	858801	2-13-7
CD37	Ms IgG2b	IPO-24	+									+	100 µg	O17060	7
CD37	Ms IgG1	CT1	+									+	500 µl	S38470	13-7
CD37	Ms IgG2b	IPO-24	+									+	500 µl	N62830	13-7
CD37 -FITC	Ms IgG1	BL14	+									+	100 tests	O19090	7
CD37 -PE	Ms IgG1	BL14	+									+	100 tests	O22000	7
CD38	Ms IgG1	AT1	+									+	500 µl	N62850	13-7
CD38	Ms IgG3	AT2	+									+	500 µl	N62890	13-7
CD38	Ms IgG1	38C03	+									+	500 µl	N62920	13-7

**Species legend** : Bd : Bird, Bv : Bovine, Ck : Chicken or Hen, Ct : Feline, Dg : Canine, Dr : Drosophila, Eq : Equine, F : Fish, Fr : Frog, Ft : Ferret, GP : Guinea Pig, Gi : Goat, Hm : Hamster, Hrs : Horse, Hu : Human, Ko : Kangaroo, M : Mammalian, Mi : Mink, Mk : Monkey, Ms : Mouse, Ne : Nematode, Op : Opossum, Pl : plant, Ql : Quail, Rb : Rabbit, Rt : Rat, Sh : Sheep, Sw : Porcine, Sy Hm : Syrian Hamster, Xe : Xenopus, Ye : Yeast

**Size** : Size indicated in bold means several sizes and formats are available (sample size or bigger size, unpurified neat serum, without azide or BSA, positive control...) : contact us for more detail

**Application legend** : Bk : Blocking, CD : Cell detection, Ch : ChIP, COA : ELISA capture, Db : Dot Blot, DD : Double diffusion, EL : ELISA detection, EM : Electron Microscopy, FCM : Flow Cytometry, FIA : FluoroImmunoAssay, GS : Gel (super)shift, HA : Hemagglutination/Latex agglutination, ICC : ImmunoCytoChemistry, IEP : Immunoelectrophoresis, IF : Immunofluorescence, IHC : ImmunoHistoChemistry, IP : Immunoprecipitation/Immunopurification, ISH : In Situ Hybridization, KA : Kinase assay, LF : Lateral flow, Neph : Nephelometry, Neut : Neutralizing, RIA : RadioImmunoassay, RID : Radial Immunodiffusion, SB : Southern Blot, TIA : Turbidimetry

**Name** : Prefixes as 'alpha', 'D1-', 'Pro',... are not considered for the alphanumerical sorting, and often included after the main name.

(+) : Expected species cross-reactivities based on immunogen sequence homology \_ Expected application suitability.

# Primary Antibodies & Ags

## Alphabetical Listing

Name	Host - Isotype	Clone	Species Reactivity				Application						Size	Cat.#	Research Area	
			Hu	Ms	Rt	Other	WB	IHC	ICC	EL	FC	IP				Other
CD38	Ms IgG1	38C04	+				+						IF	500 µl	Q12550	13-7
CD38 -FITC	Ms IgG1	T16	+					+						100 tests	O19100	7
CD39	Ms IgG1	AC2	+											200 µg	O10470	7
CD39	Ms IgG2a	22A9	+											500 µl	S38520	13-7
CD40	Rb	Pab	+	+	+			+	+					500 µl	GH6082	7
CD40	Ms IgG1	B-B20	+											200 µg	N99060	7
CD40	Ms IgM	BL-C4	+										IF	1 ml	O16450	7
CD40	Ms IgG2b	40C01	+											500 µl	N63100	13-7
CD40	Ms IgG1	BE-1	+											500 µl	Q12730	13-7
CD40	Ms IgG1	EA-5	+											500 µl	Q12770	13-7
CD40 (B Cells)	Ms IgG1	MAB89	+											200 µg	336490	7
CD40 -FITC	Ms IgG1	HB14	+											500 µl	GG1270	7
CD41	Ms IgG1	41C02	+											500 µl	N63140	2-13-7
CD41, gp11b IIIa	Ms IgG1	M148	+											200 µg	O00770	7
CD41, gp11b IIIa -Biotin	Ms IgG1	M148	+											200 µg	O06320	7
CD41, gp11b IIIa	Ms IgG1	P2	+										IF	200 µg	O18370	7
CD41, gp11b IIIa	Ms IgG1	SZ.22	+											200 µg	O18360	7
CD41, gp11b IIIa -FITC	Ms IgG1	P2	+											100 tests	O19120	7
CD41, gp11b IIIa -FITC	Ms IgG1	SZ.22	+											100 tests	O20750	7
CD41, gp11b/IIIa -FITC	Ms IgG1	M148	+											200 µg	O06310	7
CD41, gp11b/IIIa -PE	Ms IgG1	M148	+											200 µg	O14750	7
CD41a	Ms IgG1	96.2C1	+											500 µl	N63170	2-13-7
CD41a, gp11b IIIa -Biotin	Ms IgG1	P2	+											200 µg	O21420	7
CD42a	Ms IgG1	BL-H6	+											1 ml	O16920	7
CD42a, gp1b-IX	Ms IgG2a	SZ1	+											200 µg	O18380	7
CD42a, gp1b-IX -FITC	Ms IgG2a	SZ1	+											100 tests	O20760	7
CD42b	Ms IgG1	AK2	+										IF	200 µg	O06330	7
CD42b	Ms IgG1	MM2/174	+										IF	200 µg	O02660	7
CD42b	Ms IgG1	PM6/40	+										IF	200 µg	O02670	7
CD42b	Ms IgG1	42C01	+											500 µl	Q12830	13-7
CD42b -FITC	Ms IgG1	SZ2	+											100 tests	O19130	7
CD42b -PE	Ms IgG1	MM2/174	+										IF	100 tests	O13820	7
CD42b, gp1b 170kDa	Ms IgG1	SZ2	+											200 µg	O18390	7
CD42b, Platelet gp1b -PE	Ms IgG1	SZ2	+											100 tests	O20840	7
CD43	Ms IgG1	DF-T1	+											500 µl	N63270	13-7
CD43	Ms IgM	BRA 7G	+										IF	500 µl	140781	13-7
CD43	Ms IgG1	84-3C1	+											500 µl	N63230	13-7
CD43 (T-cells) -PE	Ms IgG1	DFT1	+											100 tests	O13830	7
CD44	Rt IgG2b	IM7		+										500 µg	O07870	7
CD44	Ms IgG1	J.173	+											200 µg	O10500	7
CD44	Ms IgG2a	156-3C11	+											200 µg	N99100	7
CD44 (Ly-24) -Biotin	Rt IgG2b	IM7		+										500 µg	O16650	7
CD44 (Ly-24) -FITC	Rt IgG2b	IM7		+										500 µg	O17690	7
CD44 (Ly-24) -PE	Rt IgG2b	IM7		+										100 µg	N91710	7
CD44 / HCAM	Ms IgG2a	F10-44-2	+											200 µg	N99090	7
CD44 / HCAM	Ms IgG1	A3D8	+										IF	500 µl	289320	8-13-7
CD44 / HCAM	Ms IgG1	5F12	+										IF, Bk	500 µl	N63310	8-13-7
CD44 / HCAM	Ms IgG2a	156-3C11	+				Mk	+	+					500 µl	N63340	8-13-7
CD44 -FITC	Ms IgG1	J.173	+											100 tests	O20770	7
CD44 Std. / HCAM	Ms IgG1	L3D1	+											500 µl	V07600	13-7
CD44, Pgp-1	Ms IgG1	E1/2	+											200 µg	O00780	7
CD44, Pgp-1 alpha -PE	Ms IgG1	E1/2	+											200 µg	O06340	7
CD44, Pgp-1 -Biotin	Ms IgG1	E1/2	+											200 µg	O06350	7
CD44, Pgp-1 -FITC	Ms IgG1	E1/2	+											200 µg	O14760	7
CD44v3	Ms IgG1	VFF-327V3	+											500 µl	S38560	13-7

### Research Area Code

- |   |  |   |   |  |
|---|--|---|---|--|
| 1 Allergens                             | 6 Cardiac Markers and related molecules  | 11 Drugs and resistance                             | 16 Lipides/Apolipo/Lipoproteins             | 20 Neuroscience                        |
| 2 Anglo/Histogenesis                    | 7 CD Markers                             | 12 Enzymes & enzymes inhibitors                     | 17 Membrane channels and transport proteins | 21 Post translational modifications    |
| 3 Apoptosis/cell cycle                  | 8 Cell adhesion                          | 13 Hematopoietic markers                            | 18 Metabolism/Energy pathways               | 22 Signal transduction/Stress response |
| 4 Blood and serum proteins              | 9 Cytokine/Chemokine/Growth factors      | 14 Hormones/Steroids                                | 19 Miscellaneous                            | 23 Structural proteins                 |
| 5 Cancer, Hypoxia and related molecules | 10 DNA Replication/Transcription/Repairs | 15 Infectious agents related molecules & resistance |   | 24 Tags and Markers                    |

# Primary Antibodies & Ags

## Alphabetical Listing

Name	Host - Isotype	Clone	Species Reactivity				Application						Size	Cat.#	Research Area	
			Hu	Ms	Rt	Other	WB	IHC	EL	FC	IP	Other				
CD44v4	Ms IgG1	VFF-11	+					-	+					500 µl	N63390	13-7
CD44v5	Ms IgG1	VFF-8	+					-	+					500 µl	N63430	13-7
CD44v6	Ms IgG1	VFF-7	+					-	+					500 µl	N63470	13-7
CD45	Ms IgG1	L12/201				Rb		+		+	+			200 µg	N99130	7
CD45	Ms IgG2a	RT45	+											1 mg	O22180	7
CD45 (leukocytes)	Ms IgG2a	M504525	+											200 µg	P43470	7
CD45 / LCA	Ms IgG2b	T29/33	+							+				200 µg	O00790	7
CD45 / LCA	Rt IgG2b	13/2.3		+				+		+	+			500 µg	O07880	7
CD45 / LCA -Biotin	Ms IgG2b	T29/33	+					+		+	+			200 µg	O06360	7
CD45 / LCA -Biotin	Rt IgG2b	13/2.3		+				+		+	+			500 µg	O16660	7
CD45 / LCA -FITC	Ms IgG2b	T29/33	+							+				200 µg	O06370	7
CD45 / LCA -FITC	Rt IgG2b	13/2.3		+				+		+	+			500 µg	O17160	7
CD45 / LCA -PE	Ms IgG2b	T29/33	+							+				200 µg	O14770	7
CD45 / LCA -PE	Rt IgG2b	13/2.3		+				+		+	+			100 µg	O26630	7
CD45 / T200 / LCA	Ms IgG1	2B11	+					+		+		IF		500 µl	V09190	13-7
CD45 / T200 / LCA	Ms	Bra55/2	+					+						500 µl	N63500	13-7
CD45 / T200 / LCA	Ms IgG1	cocktail	+					+		+		IF		500 µl	V09990	13-7
CD45 / T200 / LCA	Ms IgG's	cocktail	+					+		+		IF		500 µl	N63560	13-7
CD45 / T200 / LCA	Ms IgG2b	135-4C5	+					+		+		IF		500 µl	N63600	13-7
CD45 / T200 / LCA	Ms IgG1	136-4B5	+					+		+		IF		500 µl	N63630	13-7
CD45 / T200 / LCA	Rt IgG	IBL-5/25		+				+		+		IF		500 µl	N63660	13-7
CD45 -PE	Ms IgG1	BIOD19.2	+							+				100 tests	O22680	7
CD45 RA	Ms IgG1	ALB11	+					+		+				200 µg	O10510	7
CD45, C-term	Rb	Pab	+					+		+				100 µg	GK5590	21-7
CD45R / B220 (Ly5)	Rt IgG2a	RA3-6B2		+						+				500 µg	O07890	7
CD45R / B220 (Ly5) -Biotin	Rt IgG2a	RA3-6B2		+						+				500 µg	O16670	7
CD45R / B220 (Ly5) -FITC	Rt IgG2a	RA3-6B2		+						+				500 µg	O17170	7
CD45R / B220 (Ly5) -PE	Rt IgG2a	RA3-6B2		+						+				100 µg	O26640	7
CD45RA	Ms IgG2b	M504524	+											200 µg	P43480	7
CD45RA	Ms IgG1	LT45RA	+											1 mg	O22190	7
CD45RA	Ms IgG1	4KB5	+					+						500 µl	V07130	13-7
CD45RA	Ms IgG	111-1C5	+			Mk		+		+		IF		500 µl	N63680	13-7
CD45RA	Ms IgG2a	158.4D3	+			Mk		+		+		IF		500 µl	N63720	13-7
CD45RB	Rt IgG2a	16A		+				+		+	+			500 µg	O14110	7
CD45RB	Ms IgG3	DF-B1	+					+		+		IF		500 µl	422091	13-7
CD45RB	Ms IgG1	PD7/26	+					+						500 µl	V07200	13-7
CD45RB	Ms IgG1	BRA-11	+					+		+		IF		500 µl	N63760	13-7
CD45RB -Biotin	Rt IgG2a	16A		+				+		+	+			500 µg	O16680	7
CD45RB -FITC	Rt IgG2a	16A		+				+		+	+			500 µg	O17700	7
CD45RB -PE	Rt IgG2a	16A		+				+		+	+			100 µg	N88340	7
CD45RO	Ms IgG2a	UCHL-1	+					+		+				200 µg	O00800	7
CD45RO	Ms IgG2a	UCHL1	+					+						6 ml	N97420	7
CD45RO	Ms IgG2a	UCHL-1	+			Mk		+		+				500 µl	N63810	13-7
CD45RO	Ms IgG1	OPD4	+					+						500 µl	N63860	13-7
CD45RO -Biotin	Ms IgG2a	UCHL-1	+					+		+				200 µg	O06410	7
CD45RO -FITC	Ms IgG2a	UCHL-1	+					+		+				200 µg	O06420	7
CD45RO -PE	Ms IgG2a	UCHL-1	+					+		+				200 µg	O14780	7
CD45RO -PE	Ms IgG2a	UCHL.1	+											100 tests	O22020	7
CD46	Ms IgG1	J4.48	+							+				200 µg	O10520	7
CD46	Ms IgG2a	169-1-E4.3	+					+		+		IF		500 µl	N63910	13-7
CD46	Ms IgG2a	197.2B1	+			Mk								500 µl	N63890	13-7
CD46 / MCP	Ms IgG1	122-2	+									IF		200 µg	N99150	7
CD46 -FITC	Ms IgG1	122-2	+							+				100 tests	O04520	7
CD47	Ms IgG1	B6H12.2	+							+	+	Bk,IF		500 µl	Q13490	13-7
CD47	Rt IgG2b	m/AP301		+				-		+	+	IF		500 µl	GH3403	13-7

**Species legend :** Bd : Bird, Bv : Bovine, Ck : Chicken or Hen, Ct : Feline, Dg : Canine, Dr : Drosophila, Eq : Equine, F : Fish, Fr : Frog, Ft : Ferret, GP : Guinea Pig, Gi : Goat, Hm : Hamster, Hrs : Horse, Hu : Human, Ko : Kangaroo, M : Mammalian, Mi : Mink, Mk : Monkey, Ms : Mouse, Ne : Nematode, Op : Opossum, Pl : plant, Ql : Quail, Rb : Rabbit, Rt : Rat, Sh : Sheep, Sw : Porcine, Sy Hm : Syrian Hamster, Xe : Xenopus, Ye : Yeast

**Size :** Size indicated in bold means several sizes and formats are available (sample size or bigger size, unpurified neat serum, without azide or BSA, positive control...) : contact us for more detail

**Application legend :** Bk : Blocking, CD : Cell detection, Ch : ChIP, COA : ELISA capture, Db : Dot Blot, DD : Double diffusion, EL : ELISA detection, EM : Electron Microscopy, FCM : Flow Cytometry, FIA : FluoroImmunoAssay, GS : Gel (super)shift, HA : Hemagglutination/Latex agglutination, ICC : ImmunoCytoChemistry, IEP : Immunoelectrophoresis, IF : Immunofluorescence, IHC : ImmunohistoChemistry, IP : Immunoprecipitation/Immunopurification, ISH : In Situ Hybridization, KA : Kinase assay, LF : Lateral flow, Neph : Nephelometry, Neut : Neutralizing, RIA : RadioImmunoassay, RID : Radial Immunodiffusion, SB : Southern Blot, TIA : Turbidimetry

**Name :** Prefixes as 'alpha', 'D1-', 'Pro'-... are not considered for the alphanumerical sorting, and often included after the main name.

(+) : Expected species cross-reactivities based on immunogen sequence homology \_ Expected application suitability.

# Primary Antibodies & Ags

## Alphabetical Listing

Name	Host - Isotype	Clone	Species Reactivity				Application						Size	Cat.#	Research Area
			Hu	Ms	Rt	Other	WB	IHC	EL	FC	IP	Other			
CD47	Ms IgG1	2D3	+										500 µl	Q13450	13-7
CD48	Ms IgG2b	9E5	+					+					500 µl	S38690	13-7
CD48	Ms IgG2a	5-4.8	+					+	+			IF	500 µl	N63950	13-7
CD48	Ms IgG1	156.4H9	+					+	+			IF	500 µl	N63930	13-7
CD48 Leukocytes -FITC	Ms IgG1	J4.57	+							+			100 tests	O20780	7
CD49b	Ms IgG1	Gi9	+						+	+			200 µg	O18410	7
CD49b -FITC	Ms IgG1	Gi9	+						+	+			100 tests	O21580	7
CD49c	Ms IgG1	MIKd2	+					+			+		100 µg	O16000	7
CD49d	Ms IgG1	HP2.1	+							+			200 µg	O18420	7
CD49d -FITC	Ms IgG1	HP2.1	+							+			100 tests	O21590	7
CD49d VLA (LHR)	Ms IgG1	BU49	+					+			+		200 µg	N90560	7
CD49e	Ms IgG2b	SAM1	+					+	+			IF,Neut	100 µg	O06450	7
CD49e -FITC	Ms IgG2b	SAM1	+							+		IF	100 tests	O22700	7
CD49f	Rt IgG2a	GoH3	+					+	+				200 µg	O18430	7
CD49f	Rt IgG2a	GoH3	+					+	+		+		1 ml	GG1280	7
CD49f, alpha-6 subunit	Ms IgG2b	4F10	+					+			+		200 µg	N99170	7
CD50 / ICAM-3	Ms IgG2a	101-1D2	+					+	+			IF	500 µl	N64070	8-13-7
CD50 / ICAM-3	Ms IgG2a	186-2G9	+					+	+			IF	500 µl	N64090	8-13-7
CD51	Ms IgG1	AMF7	+					+	+				200 µg	O18450	7
CD51	Ms IgG1	CJ00	+					+					500 µl	V04270	13-7
CD51 -FITC	Ms IgG1	AMF7	+										100 tests	O22710	7
CD51/CD61	Ms IgG1	23C6	+					+	+	+			200 µg	O02720	7
CD53	Ms IgG2b	63.5A3	+						+			IF	500 µl	N64130	13-7
CD53	Ms IgG2a	161.2	+					+				IF,Bk	500 µl	N64150	13-7
CD54	Ms IgG1	84H10	+					+	+	+		IF	200 µg	O18470	7
CD54 / ICAM-1	Ms IgG1	15.2	+							+			200 µg	O00820	7
CD54 / ICAM-1	Rt IgG2a	BE29G1		+				+	+	+			500 µg	O07900	7
CD54 / ICAM-1	Ms IgG1	54C04	+					-	+				500 µl	N64180	13-7
CD54 / ICAM-1	Ms IgG1	15.2	+					+	+			Bk	500 µl	289981	8-13
CD54 / ICAM-1	Ms IgG2b	W-CAM-1	+					+	+			Bk,IF	500 µl	N64220	8-13
CD54 / ICAM-1 -Biotin	Ms IgG1	15.2	+						+				200 µg	O06500	7
CD54 / ICAM-1 -Biotin	Rt IgG2a	BE29G1		+				+	+	+			500 µg	O17180	7
CD54 / ICAM-1 -FITC	Ms IgG1	15.2	+							+			200 µg	O06510	7
CD54 / ICAM-1 -FITC	Rt IgG2a	BE29G1		+				+	+	+			500 µg	O19970	7
CD54 / ICAM-1 -PE	Rt IgG2a	BE29G1		+				+	+	+			100 µg	N97640	7
CD54 / ICAM-1 -PE	Ms IgG1	15.2	+							+			200 µg	O14790	7
CD55	Ms IgG1	BRIC 216	+						+	+		Bk	200 µg	O06520	7
CD55	Ms IgG1	143-30	+					+	+			IF	200 µg	N99220	7
CD55 / DAF	Ms IgG1	143-30	+					+	+			IF	500 µl	N64240	13-7
CD55 / DAF	Ms IgG1	55C02	+							+		IF	500 µl	Q13900	13-7
CD56 / NCAM	Ms IgG1	NKI-NBL-1	+					+					1 ml	472520	7
CD56 / NCAM	Ms IgG1	123C3	+					+					1 ml	O01490	7
CD56 / NCAM	Rb	Pab	+					+					500 µl	GH5941	8-13-7
CD56 / NCAM -Biotin	Ms IgG1	ERIC-1	+					+		+			200 µg	322750	7
CD56 / NCAM -PE	Ms IgG1	ERIC-1	+					+		+			200 µg	O14800	7
CD56 / NCAM-1	Ms IgG1	ERIC-1	+					+	+				500 µl	N64300	8-13-7
CD56 / NCAM-1	Ms IgG1	56C04	+					+					500 µl	N64260	13-7
CD56 / NCAM-1	Ms IgG1	56C05	+					+					500 µl	Q13980	13-7
CD56 / NCAM-1	Ms IgG1	123C3.D5	+					+				IF	500 µl	O34260	8-13-7
CD57	Ms IgM	VC1.1	+					+	+		+		200 µg	O00830	7
CD57	Ms IgM	HNK-1	+					+		+			500 µl	N64390	13-7
CD57	Ms IgM	NK1	+					+		+			500 µl	N64350	13-7
CD57 -Biotin	Ms IgM	VC1.1	+					+	+		+		200 µg	O07650	7
CD57 -FITC	Ms IgM	VC1.1	+					+	+		+		200 µg	O07660	7
CD57 -PE	Ms IgM	VC1.1	+					+	+		+		200 µg	O16010	7

### Research Area Code

- |   |  |   |   |  |
|---|--|---|---|--|
| 1 Allergens                             | 6 Cardiac Markers and related molecules  | 11 Drugs and resistance                             | 16 Lipides/Apolipo/Lipoproteins             | 20 Neuroscience                        |
| 2 Anglo/Histogenesis                    | 7 CD Markers                             | 12 Enzymes & enzymes inhibitors                     | 17 Membrane channels and transport proteins | 21 Post translational modifications    |
| 3 Apoptosis/cell cycle                  | 8 Cell adhesion                          | 13 Hematopoietic markers                            | 18 Metabolism/Energy pathways               | 22 Signal transduction/Stress response |
| 4 Blood and serum proteins              | 9 Cytokine/Chemokine/Growth factors      | 14 Hormones/Steroids                                | 19 Miscellaneous                            | 23 Structural proteins                 |
| 5 Cancer, Hypoxia and related molecules | 10 DNA Replication/Transcription/Repairs | 15 Infectious agents related molecules & resistance |   | 24 Tags and Markers                    |

# Primary Antibodies & Ags

## Alphabetical Listing

Name	Host - Isotype	Clone	Species Reactivity				Application						Size	Cat.#	Research Area	
			Hu	Ms	Rt	Other	WB	IHC	EL	FC	IP	Other				
CD58	Ms IgG2a	AICD58	+					+		+				200 µg	<b>O18490</b>	7
CD58 -FITC	Ms IgG2a	AICD58	+											100 tests	<b>O19190</b>	7
CD58 -PE	Ms IgG2a	AICD58	+								+			100 tests	<b>O22040</b>	7
CD59	Ms IgG2a	MEM43	+										IF	200 µg	<b>O06540</b>	7
CD59	Ms IgG2b	BRA-10G	+										IF	200 µg	<b>N99270</b>	7
CD59 / MACIF / MIRL	Ms IgG1	BRA-10G	+					+		+	+			<b>500 µl</b>	<b>V10080</b>	13-7
CD59 / MACIF / MIRL	Ms IgM	193-27	+					+		+			IF	<b>500 µl</b>	<b>N64430</b>	13-7
CD61 / GPIIIa	Ms IgG1	61C01	+					+						<b>500 µl</b>	<b>N64520</b>	2-13-7
CD61 / GPIIIa	Ms IgG1	Y2/51	+					+						<b>500 µl</b>	<b>V06920</b>	2-13-7
CD61 -FITC	Ms IgG1	F11	+							+				200 µg	<b>O06570</b>	7
CD61, gp 111a	Ms IgG1	F11	+							+				200 µg	<b>O00840</b>	7
CD61, gp 111a -Biotin	Ms IgG1	F11	+							+				200 µg	<b>O06560</b>	7
CD61, gp 111a -PE	Ms IgG1	F11	+							+				200 µg	<b>O14810</b>	7
CD61, gpIIIa Platelets	Ms IgG1	SZ.21	+					+		+				200 µg	<b>O18500</b>	7
CD62E	Ms IgG1	16G4	+					+						<b>500 µl</b>	<b>V04220</b>	13-7
CD62E	Ms IgG1	1.2B6	+				Sw	+		+			IF	<b>500 µl</b>	<b>N64550</b>	2-8-13-7
CD62E	Rb	Pab	+				Bv,Sh				+		IF	<b>500 µl</b>	<b>N64570</b>	2-8-13-7
CD62L / LECAM-1	Ms IgG2b	FMC46	+											200 µg	<b>O06590</b>	7
CD62L / LECAM-1 -FITC	Ms IgG1	DREG56	+					+	+		+			100 tests	<b>O20800</b>	7
CD62P	Ms IgG1	C34	+					-	+					<b>500 µl</b>	<b>V02970</b>	8-7
CD62P	Ms IgG1	AK-6	+						+					<b>500 µl</b>	<b>V04620</b>	13-7
CD62P / PADGEM, gmp138 -PE	Ms IgG1	CRC81	+								+			500 µl	<b>O17100</b>	7
CD62P / PADGEM, gmp139	Ms IgG1	CRC81	+					+					IF	1 ml	<b>O04980</b>	7
CD62P / PADGEM, gmp140	Ms IgG1	Throm/6(C2)	+							+			IF	1 ml	<b>O21460</b>	7
CD63	Ms IgG1	NKI/C3	+						+					<b>500 µl</b>	<b>N64610</b>	13-7
CD63 -FITC	Ms IgG1	CLBGran/12	+								+		IF	100 tests	<b>O20810</b>	7
CD64	Ms IgG1	M22	+							+	+		IF	250 µg	<b>S34550</b>	7
CD64	Ms IgG1	32.2	+							+	+		IF	250 µg	<b>AM0180</b>	7
CD64 -FITC	Ms IgG1	32.2	+							+	+		IF	1.25 mg	<b>GG1300</b>	7
CD66b (Formerly CD67) -FITC	Ms IgG1	80H3	+								+			100 tests	<b>O19200</b>	7
CD66b, 100kDa	Ms IgG1	80H3	+						+	+				200 µg	<b>O10550</b>	7
CD66ce (NCA / CEA)	Ms IgG1	198	+						+					<b>500 µl</b>	<b>V02610</b>	5-7
CD68	Ms IgM	BL-A/D8	+						+		+			1 ml	<b>142860</b>	7
CD68	Ms IgG1	KP1	+				+ Mk,Ct		+					<b>500 µl</b>	<b>V10020</b>	13-7
CD68 (Macrophage Marker)	Ms IgG3	PG-M1	+						+					<b>500 µl</b>	<b>V05390</b>	13-7
CD69	Ms IgG2b	TP1.55.3	+								+	+		200 µg	<b>O18510</b>	7
CD69	Ms IgG1	CH11	+					-	+					<b>500 µl</b>	<b>S38730</b>	13-7
CD71 / Transferrin Receptor	Ms IgG2a	66-IG10	+						+			+	IF	1 ml	<b>N97150</b>	4
CD71 / Transferrin Receptor	Ms IgG2b	5B11	+						+	+				1 mg	<b>S34580</b>	7
CD71 / Transferrin Receptor	Ms IgG2b	10D2	+						+	+				1 mg	<b>GG1330</b>	7
CD71 / Transferrin Receptor	Ms IgG2b	23D10	+						+	+				1 mg	<b>GG1340</b>	7
CD71 / Transferrin Receptor	Ms IgG2a	13E4	+						+	+				1 mg	<b>GG1320</b>	7
CD71 / Transferrin Receptor	Ms IgG2b	11F5	+						+	+				1 mg	<b>S34600</b>	7
CD71 / Transferrin Receptor	Ms IgG2b	7-1	+						+	+				1 mg	<b>O05240</b>	7
CD71 / Transferrin Receptor	Ms IgG2a	2B6	+						+	+				1 mg	<b>S34590</b>	7
CD71 / Transferrin Receptor	Ms IgG2a	7F8	+						+	+				1 mg	<b>GG1350</b>	7
CD71 / Transferrin Receptor	Ms IgG1	T56/14	+								+			200 µg	<b>O00850</b>	7
CD71 / Transferrin Receptor	Rt IgG2a	R17217.1.4		+					+		+			500 µg	<b>O07910</b>	7
CD71 / Transferrin Receptor	Ms IgG1	YDJ1.2.2	+						+				IF	200 µg	<b>GG1310</b>	7
CD71 / Transferrin Receptor	Ms IgG2b	71C03	+						+					<b>500 µl</b>	<b>N64820</b>	13-7
CD71 / Transferrin Receptor	Ms IgG1	DF1513	+						+				IF	<b>500 µl</b>	<b>N64770</b>	13-7
CD71 / Transferrin Receptor	Ms IgG1	66IG10	+						+				IF	<b>500 µl</b>	<b>N64790</b>	13-7
CD71 / Transferrin Receptor	Ms IgG1	L1B1	+						+				IF	<b>500 µl</b>	<b>V07800</b>	13-7
CD71 / Transferrin Receptor -Biotin	Ms IgG1	T56/14	+							+				200 µg	<b>O06630</b>	7
CD71 / Transferrin Receptor -Biotin	Rt IgG2a	R17217.1.4		+					+		+			500 µg	<b>O16690</b>	7

**Species legend :** Bd : Bird, Bv : Bovine, Ck : Chicken or Hen, Ct : Feline, Dg : Canine, Dr : Drosophila, Eq : Equine, F : Fish, Fr : Frog, Ft : Ferret, GP : Guinea Pig, Gi : Goat, Hm : Hamster, Hrs : Horse, Hu : Human, Ko : Kangaroo, M : Mammalian, Mi : Mink, Mk : Monkey, Ms : Mouse, Ne : Nematode, Op : Opossum, Pl : plant, Ql : Quail, Rb : Rabbit, Rt : Rat, Sh : Sheep, Sw : Porcine, Sy Hm : Syrian Hamster, Xe : Xenopus, Ye : Yeast

**Size :** Size indicated in bold means several sizes and formats are available (sample size or bigger size, unpurified neat serum, without azide or BSA, positive control...) : contact us for more detail

**Application legend :** Bk : Blocking, CD : Cell detection, Ch : ChIP, COA : ELISA capture, Db : Dot Blot, DD : Double diffusion, EL : ELISA detection, EM : Electron Microscopy, FCM : Flow Cytometry, FIA : FluoroImmunoAssay, GS : Gel (super)shift, HA : Hemagglutination/Latex agglutination, ICC : ImmunoCytoChemistry, IEP : Immunoelectrophoresis, IF : Immunofluorescence, IHC : ImmunoHistoChemistry, IP : Immunoprecipitation/Immunopurification, ISH : In Situ Hybridization, KA : Kinase assay, LF : Lateral flow, Neph : Nephelometry, Neut : Neutralizing, RIA : RadioImmunoassay, RID : Radial Immunodiffusion, SB : Southern Blot, TIA : Turbidimetry

**Name :** Prefixes as 'alpha', 'D1-', 'Pro-',... are not considered for the alphanumerical sorting, and often included after the main name.

(+) : Expected species cross-reactivities based on immunogen sequence homology \_ Expected application suitability.

# Primary Antibodies & Ags

## Alphabetical Listing

Name	Host - Isotype	Clone	Species Reactivity				Application						Size	Cat.#	Research Area
			Hu	Ms	Rt	Other	WB	IHC	EL	FC	IP	Other			
CD71 / Transferrin Receptor -FITC	Ms IgG1	T56/14	+									+	200 µg	O06620	7
CD71 / Transferrin Receptor -FITC	Rt IgG2a	R17217.1.4		+					+	+	+		500 µg	O17190	7
CD71 / Transferrin Receptor -FITC	Ms IgG1	YDJ1.2.2	+						+	+			100 tests	O19220	7
CD71 / Transferrin Receptor -PE	Ms IgG1	T56/14	+							+			200 µg	O14820	7
CD71 / Transferrin Receptor -PE	Rt IgG2a	R17217.1.4		+					+	+	+		100 µg	N97140	7
CD72	Ms IgG2b	M42253	+										200 µg	P43520	7
CD72	Ms IgG2b	3F3	+						+	+			1 mg	O16460	7
CD72	Ms IgG1	D748	+						+				500 µl	V04470	13-7
CD74	Ms IgG1	LN2	+			Mk		+	+			IF	500 µl	N64860	13-7
CD77	Rt IgM	38-13	+						+	+			100 tests	O51080	7
CD79A	Rb	Pab	+			Sw,Rb+		+	+			IF	500 µl	V16320	13-7
CD79a / mb-1	Ms IgG1	JCB117	+						+				500 µl	U98810	13-7
CD79a / mb-1	Ms IgG1	HM47/A9	+	+	+	Sw,Rb+		+	+			IF	500 µl	N64940	13-7
CD79a / mb-1 (B-Cell Marker)	Rb IgG	SP18	+						+				500 µl	V17640	13-7
CD79b	Ms IgG1	SN8	+						+	+			500 µl	Q14570	13-7
CD79b -PE	Ms IgG1	CB3-1	+							+			100 tests	O22060	7
CD80	Ms IgG1	MAB104	+						+	+			200 µg	O19560	7
CD80 -FITC	Ms IgG1	MAB104	+						+	+			100 tests	O22720	7
CD81 / TAPA-1	Ms IgG1	81C02	+						+				500 µl	N65050	13-7
CD81 / TAPA-1	Ms IgG1	1.3.3.22	+						+	+		IF	500 µl	N65080	13-7
CD82	Ms IgG2a	5B5	+					-	+				500 µl	V02820	13-7
CD83	Ms IgG2b	HB15A	+						+	+			200 µg	O17120	7
CD84	Ms IgG1	152-1D5	+						+	+		IF	500 µl	N65100	13-7
CD86	Ms IgG1	BU63	+							+			200 µg	N90590	7
CD89	Ms IgG1	A3	+							+			200 µg	O18550	7
CD89 -PE	Ms IgG1	A3	+							+			100 tests	O22080	7
CD90 / Thy-1	Rt IgG	T24/31		+						+			500 µg	864160	7
CD90 / Thy-1	Ms IgG1	F15-42-1-5	+						+				200 µg	474050	7
CD90 / Thy-1	Rt IgG2b	IBL-1		+					+	+		IF	500 µl	N65200	13-7
CD90 / Thy-1	Rt IgG2b	90C02		+						+		IF	500 µl	Q14870	13-7
CD90 / Thy-1	Ms IgG1	90C03	+						+	+		IF	500 µl	Q14810	13-7
CD90 / Thy-1 -Biotin	Rt IgG	T24/31		+						+			500 µg	O07920	7
CD90 / Thy-1 -FITC	Rt IgG	T24/31		+						+			500 µg	O10730	7
CD90 / Thy-1 -FITC	Ms IgG1	F15.42.1.5	+							+			100 tests	O20820	7
CD90 / Thy-1 -PE	Rt IgG	T24/31		+						+			100 µg	N88350	7
CD90 / Thy-1 -PE	Ms IgG1	F15.42.1.5	+							+			100 tests	O22730	7
CD90 / Thy1.2	Ms IgG2b	30-H12		+					+	+		IF	500 µg	N96690	7
CD90 / Thy1.2	Rt IgM	T1-H7		+						+	+		200 µg	AL4200	7
CD90 / Thy1.2 -Biotin	Ms IgG2b	30-H12		+					+	+		IF	500 µg	O07930	7
CD90 / Thy1.2 -FITC	Ms IgG2b	30-H12		+					+	+		IF	500 µg	O10740	7
CD90 / Thy1.2 -PE	Ms IgG2b	30-H12		+					+	+		IF	100 µg	N88360	7
CD94	Ms IgG1	SPM157	+						+			COA	500 µl	GH3272	7
CD94	Ms IgG2a	HP-3B1	+						+	+			200 µg	O18560	7
CD95 / Fas	Ms	DX2	+						+	+	+		250 µg	S52910	3
CD95 / Fas	Ms	50830.11	+						+	+			250 µg	S52920	3
CD95 / Fas	Ms IgM	IPO-4	+							+	+		100 µg	O17070	3-22
CD95 / Fas	Ms IgG1	95C03	+						+				500 µl	N65230	3-13-7
CD95 / Fas	Ms IgG1	95C02	+						+			IF	500 µl	Q14910	3-13-7
CD95 / Fas	Rb	Pab	+						+				500 µl	S43990	3-13-7
CD95 / Fas	Rb	Pab	+						+	+			500 µl	V16370	3
CD97	Ms IgG1	MEM 180	+							+			200 µg	O06710	7
CD98	Ms IgG2a	BU53	+										200 µg	N90610	7
CD98	Ms IgG1	JS-5	+							+			100 tests	O10030	7
CD98	Ms IgM	98C01	+							+		IF	500 µl	Q14950	13-7
CD99 / MIC2	Rb	Pab	+						+	+			500 µl	GH5500	7

Immunologicals

A.62

interchim

Research Area Code

- |   |  |   |   |  |
|---|--|---|---|--|
| 1 Allergens                             | 6 Cardiac Markers and related molecules  | 11 Drugs and resistance                             | 16 Lipides/Apolipo/Lipoproteins             | 20 Neuroscience                        |
| 2 Anglo/Histogenesis                    | 7 CD Markers                             | 12 Enzymes & enzymes inhibitors                     | 17 Membrane channels and transport proteins | 21 Post translational modifications    |
| 3 Apoptosis/cell cycle                  | 8 Cell adhesion                          | 13 Hematopoietic markers                            | 18 Metabolism/Energy pathways               | 22 Signal transduction/Stress response |
| 4 Blood and serum proteins              | 9 Cytokine/Chemokine/Growth factors      | 14 Hormones/Steroids                                | 19 Miscellaneous                            | 23 Structural proteins                 |
| 5 Cancer, Hypoxia and related molecules | 10 DNA Replication/Transcription/Repairs | 15 Infectious agents related molecules & resistance |   | 24 Tags and Markers                    |

# Primary Antibodies & Ags

## Alphabetical Listing

Name	Host - Isotype	Clone	Species Reactivity				Application						Size	Cat.#	Research Area	
			Hu	Ms	Rt	Other	WB	IHC	ICC	EL	FC	IP				Other
CD99 / MIC2	Ms IgG1	O13	+					+						500 µl	S40550	13-5-7
CD99 / MIC2	Ms IgM	HO36-1.1	+		+			+					IF	500 µl	N65260	13-5-7
CD100 / Leukocyte Semaphorin	Ms IgM	133.1G6	+			Mk		+	+				IF	500 µl	N61050	13-7
CD103 (HML-1)	Ms IgG2a	2G5.1	+					+	+	+				200 µg	O18250	7
CD103 (HML-1) -Biotin	Ms IgG2a	2G5.1	+					+	+	+				200 µg	O21380	7
CD103 (HML-1) -FITC	Ms IgG2a	2G5.1	+											100 tests	O22640	7
CD106 / VCAM	Ms IgG1	B-K9	+					-	+	+		IF		500 µl	N61210	13-7
CD105 / Endoglin	Ms IgG1	SN6h	+					+	+	+				500 µl	Q10170	2-13-7
CD105 / Endoglin	Rb	Pab	+							+				500 µl	BG2161	7
CD105 / Endoglin	Ms IgM	8E11	+											200 µg	O02570	7
CD105 / Endoglin	Ms IgG3	1G2	+							+				200 µg	O20210	7
CD105 / Endoglin	Ms IgG1	PN-E2	+					+	+					1 ml	O18830	7
CD106 / VCAM-1	Ms IgG1	1G11	+					+			+	IF		200 µg	O19550	7
CD106 / VCAM-1	Ms IgG1	1.G11B1	+					+	+	+				200 µg	N98740	7
CD106 / VCAM-1	Ms IgG1	1.4C3	+					+	+					200 µg	N98730	7
CD106 / VCAM-1	Ms IgG1	1.4C3	+					+						500 µl	Q10230	2-13-7
CD106 / VCAM-1	Ms IgG1	1G11.B1	+			Sw		+		+				500 µl	N61190	2-8-13-7
CD106 / VCAM-1	Rt IgG1	M/K-2		+				+			+	IF		500 µg	O15810	7
CD106 / VCAM-1-Biotin	Ms IgG1	1G11B1	+						+	+				500 µl	O23030	7
CD115 /c-fms/CSF-1R/M-CSFR	Rt IgG1	2-4A5-4	+	-				+				Bk,IF		500 µl	N61230	9-13-7
CD115 /c-fms/CSF-1R/M-CSFR	Rt IgG2b	3-4A4-E4	+					+				IF		500 µl	N61250	9-13-7
CD115 /c-fms/CSF-1R/M-CSFR	Rt IgG1	7-7A3-17	+					+		+		IF		500 µl	N61270	9-13-7
CD116, GM-CSFR alpha chain	Ms IgG1	SC04	+					+		+	+			200 µg	O20230	7-9
CD117 /c-Kit/SCF-Receptor	Ms IgG1	K69	+					+				IF		500 µl	N61330	9-13-7
CD117 /c-Kit/SCF-Receptor	Ms IgG1	K44.2	+					+		+	+	IF		500 µl	N61350	9-13-7
CD117 /c-Kit/SCF-Receptor	Ms IgG2a	K45	+					+				IF		500 µl	N61370	9-13-7
CD117 /c-Kit/SCF-Receptor	Ms IgG1	cocktail	+					+				IF		500 µl	N61390	13-7
CD117 /c-Kit/SCF-Receptor	Rb	Pab	+					+						500 µl	R30851	13-5-7
CD117 /c-Kit/SCF-Receptor	Rb	Pab	+					+						500 µl	V12070	22-7
CD117 /c-Kit/SCF-Receptor	Rb	Pab	+			Dg		+						500 µl	GH5672	9-7
CD117 -PE	Ms IgG1	95C3	+							+			100 tests	O21540	7	
CD118, Chain 2, beta chain	Ms IgG2a	M99012521	+					+		+	+			50 µg	P45940	9-7
CD118, Chain 2, beta chain	Rb	Pab	+					+	+	+	+			50 µg	P50670	9-7
CD119, Chain 1, alpha chain	Rb	Pab	+					+		+	+			200 µg	P50710	9-7
CD119, Chain 1, alpha chain	Ms IgG1	M99012528	+					+	+	+	+			50 µg	P46030	9-7
CD119, Chain 1, alpha chain	Rt	M99012621		+				+	+	+	+			50 µg	P46020	9-7
CD119, Chain 1, alpha chain	Rb	Pab		+				+	+	+	+			50 µg	P50720	9-7
CD119, Chain 2, beta chain	Rb	Pab	+					+	+	+	+			50 µg	P50730	9-7
CD119, Chain 2, beta chain	Ms IgG1	M99012529	+					+	+	+	+			250 µg	P46040	9-7
CD119, Chain 2, beta chain	Rb	Pab		+				+	+	+	+			50 µg	P50740	9-7
CD120a, TNF-Rec p55	Ms IgG1	MR1-2	+					+		+				1 ml	O16900	7
CD133 / AC133	Ms IgG1	32AT1672.91	+					+		+				100 µg	BC7280	13-7
CD133 / AC133 , C-term	Rb	Pab	+					+		+				100 µg	BC7270	13-7
CD133 / AC133 , N-term	Rb	Pab	+							+				100 µg	BC7260	13-7
CD137 / 4-1BB	Ms IgG1	BBK-2	+								+	IF		500 µl	N61550	13-7
CD138	Rb	Pab	+						+					500 µl	GH5913	7
CD138	Ms IgG1	B-B4	+					+	+	+	+			200 µg	O06070	7
CD138	Ms IgG1	5F7	+					+						500 µl	V04020	13-7
CD138	Ms IgG1	Mi15	+					+	+		+			500 µl	V04920	13-7
CD138	Ms IgG1	B-B4	+					+						500 µl	V04992	13-7
CD141 / Thrombomodulin	Ms IgG1	B-A35	+								+			200 µg	O06100	7
CD141 / Thrombomodulin	Ms IgG1	141C01	+		+			+						500 µl	N61640	2-13
CD147	Ms IgG1	MEM-M6/1	+					+			+	IF		200 µg	O06110	7
CD150 / SLAM	Ms IgG1	IPO-3	+					+	+	+	+			100 µg	968490	7
CD152 / CTLA-4	Ms IgG2a	BNI3	+					+		+				200 µg	O19280	7

**Species legend :** Bd : Bird, Bv : Bovine, Ck : Chicken or Hen, Ct : Feline, Dg : Canine, Dr : Drosophila, Eq : Equine, F : Fish, Fr : Frog, Ft : Ferret, GP : Guinea Pig, Gi : Goat, Hm : Hamster, Hrs : Horse, Hu : Human, Ko : Kangaroo, M : Mammalian, Mi : Mink, Mk : Monkey, Ms : Mouse, Ne : Nematode, Op : Opossum, Pl : plant, Ql : Quail, Rb : Rabbit, Rt : Rat, Sh : Sheep, Sw : Porcine, Sy Hm : Syrian Hamster, Xe : Xenopus, Ye : Yeast

**Size :** Size indicated in bold means several sizes and formats are available (sample size or bigger size, unpurified neat serum, without azide or BSA, positive control...) : contact us for more detail

**Application legend :** Bk : Blocking, CD : Cell detection, Ch : ChIP, COA : ELISA capture, Db : Dot Blot, DD : Double diffusion, EL : ELISA detection, EM : Electron Microscopy, FCM : Flow Cytometry, FIA : FluoroImmunoAssay, GS : Gel (super)shift, HA : Hemagglutination/Latex agglutination, ICC : ImmunoCytoChemistry, IEP : Immunoelectrophoresis, IF : Immunofluorescence, IHC : ImmunoHistoChemistry, IP : Immunoprecipitation/Immunopurification, ISH : In Situ Hybridization, KA : Kinase assay, LF : Lateral flow, Neph : Nephelometry, Neut : Neutralizing, RIA : RadioImmunoassay, RID : Radial Immunodiffusion, SB : Southern Blot, TIA : Turbidimetry

**Name :** Prefixes as 'alpha', 'D1-', 'Pro-',... are not considered for the alphanumerical sorting, and often included after the main name.

(+): Expected species cross-reactivities based on immunogen sequence homology \_ Expected application suitability.

# Primary Antibodies & Ags

## Alphabetical Listing

Name	Host - Isotype	Clone	Species Reactivity				Application						Size	Cat.#	Research Area		
			Hu	Ms	Rt	Other	WB	IHC	EL	FC	IP	Other					
CD155 / PVR (Polio Virus Receptor)	Ms IgG1	D171	+	-	-	Mk	-						+	IF	500 µl	677282	13-7
CD158a, p58.1	Ms IgG1	EB6	+										+	+	200 µg	O10270	7
CD158b, p58.2	Ms IgG1	GL183	+										+	+	200 µg	O10280	7
CD161	Ms IgG1	LT161	+											IF	1 mg	Q32610	7
CD162	Ms IgG1	Mab	+					+	+					Bk	200 µg	O17550	7
CD162	Ms IgG1	Mab	+					+	+						200 µg	O16860	7
CD163	Ms IgG1	MAC2-158	+					+		+	+				250 µg	AM0260	7
CD163	Ms IgG1	R20	+					+		+	+				250 µg	S34510	7
CD163	Ms IgG1	MAC2-48	+					+		+	+				250 µg	AM0200	7
CD163	Ms IgG1	163C01	+						+						500 µl	N61810	13-7
CD165	Ms IgG1	SN2	+					+	+		+				500 µl	Q11060	13-7
CD165	Ms IgG1	SN2a	+					+	+		+				500 µl	Q11100	13-7
CD175 / Tn Antigen	Ms IgGM	HB-Tn1	+						+						500 µl	V05990	5-7
CD175s / Sialosyl Tn Antigen	Ms IgG1	HB STn1	+						+						500 µl	V06040	5-7
CD200 (OX 2 Ag)	Ms IgG1	OX-2				+								+	500 µg	S34850	7
CD231	Ms IgG1	SN1	+					+	+					+	500 µl	Q11440	13-7
CD231	Ms IgG1	SN1a	+					+	+					+	500 µl	Q11480	13-7
CDC2, p34	Rb	Pab	+	+	+			+	+					+	500 µl	GH5551	7
CDC2, phospho (tyr 15)	Rb	Pab	+	+	+	Dr,Xe		+							100 µl	AW7610	3
CDC2L1, C-term	Rb	Pab	+	+		Hm		+	+		+				100 µg	GL3450	21
CDC2L1, N-term	Rb	Pab	+						+	+					100 µg	GL3440	21
CDC2L5, N-term	Rb	Pab	+	+				+	+	+					100 µg	GL3460	21
CDC6	Ms IgG1	DCS-180	+					+					+		500 µl	N65750	3
CDC7 Phosphatase	Ms IgG1	DCS-341	+					+	+				+		500 µl	V09460	3
CDC7L1, C-term	Rb	Pab	+					+	+	+					100 µg	GL3480	21
CDC7L1, N-term	Rb	Pab	+					+		+					100 µg	GL3470	21
CDC14A Phosphatase	Ms IgG1	DCS-291	+					+	+				+		500 µl	V09410	3
CDC25a	Rb	Pab	+					+					+		100 µg	AL0400	3
CDC25a	Rb	Pab	+					+					+		100 µg	AL0410	3
CDC25A	Ms IgG2a	DCS-120	+	+				+	+				+	IF	500 µl	N65310	3
CDC25A	Ms IgG2a	DCS-121	+	+				+	+				+	IF	500 µl	N65350	3
CDC25A	Ms IgG2a	cocktail	+	+				+	+				+	IF	500 µl	N65390	3
CDC25a	Rb	Pab	+										+		400 µl	GP8200	3
CDC25a	Rb	Pab	+										+		400 µl	GP8210	3
CDC25a -Agarose	Rb	Pab	+										+		100 µg	AL2020	10
CDC25a -Agarose	Rb	Pab	+										+		100 µg	AL2030	10-21
CDC25a (to exon 7)	Rb	Pab	+					+					+		100 µl	AW8520	3
CDC25a (to exon 9)	Rb	Pab	+					+					+		100 µl	AW6450	3
CDC25B	Ms IgG1	25B03	+						+				+		500 µl	Q15080	3
CDC25B	Rb	Pab	+					+					+		500 µl	Q15170	3
CDC25C	Ms IgG1	25C07	+					+	+				+	IF	500 µl	Q15230	3
CDC25C	Ms IgG1	25C14	+					+	-				+	IF	500 µl	N65470	3
CDC25C	Ms IgG1	25C15	+					+	-				+	IF	500 µl	N65500	3
CDC25C	Ms IgG1	25C19	+					-	-					IF	500 µl	N65520	3
CDC25C	Ms IgG1	25C193	+	+				-	-					IF	500 µl	N65580	3
CDC34	Rb	Pab	+					+							500 µl	N65610	3
CDC34	Ms IgG1	Mab	+					+					+		100 µl	GP7780	3
CDC34, C-term	Rb	Pab	+					+		+					100 µg	GK7080	21-18
CDC34, N-term	Rb	Pab	+						+	+					100 µg	GK7070	21-18
CDC37	Rb	Pab	+	+				+					+		500 µl	N65640	3
CDC47	Ms IgG1	47DC141	+	+	+	Dg,Xe		+	+				+	IF	500 µl	N65700	3
CDC47	Rb	Pab	+	+				+	-				+		500 µl	N65670	3
CDh1	Ms IgG1	DH01	+					+					+		500 µl	Q15560	3
CDK1 / p34cdc2	Ms IgG2a	A17.1.1	+	+	+	GP,Ck+		+	+				+	KA,IF	500 µl	N65780	3
CDK1 / p34cdc2	Ms IgG2a	POH-1	+			Bv,Mk+		+	-				+		500 µl	N65830	3

Immunologicals

A.64

interchim

### Research Area Code

- |   |  |   |   |  |
|---|--|---|---|--|
| 1 Allergens                             | 6 Cardiac Markers and related molecules  | 11 Drugs and resistance                             | 16 Lipides/Apolipo/Lipoproteins             | 20 Neuroscience                        |
| 2 Anglo/Histogenesis                    | 7 CD Markers                             | 12 Enzymes & enzymes inhibitors                     | 17 Membrane channels and transport proteins | 21 Post translational modifications    |
| 3 Apoptosis/cell cycle                  | 8 Cell adhesion                          | 13 Hematopoietic markers                            | 18 Metabolism/Energy pathways               | 22 Signal transduction/Stress response |
| 4 Blood and serum proteins              | 9 Cytokine/Chemokine/Growth factors      | 14 Hormones/Steroids                                | 19 Miscellaneous                            | 23 Structural proteins                 |
| 5 Cancer, Hypoxia and related molecules | 10 DNA Replication/Transcription/Repairs | 15 Infectious agents related molecules & resistance |   | 24 Tags and Markers                    |



# Primary Antibodies & Ags

## Alphabetical Listing

Name	Host - Isotype	Clone	Species Reactivity				Application						Size	Cat.#	Research Area
			Hu	Ms	Rt	Other	WB	IHC	EL	FC	IP	Other			
CDX4, N-term	Rb	Pab	+										100 µg	GL0390	13
CEA, see CD66e & Carcinoembryonic Ag.	Rb	Pab	+					+	+				500 µl	GH5573	5
CEA / CD66e	Ms IgG1	CE05	+					+	+		+		500 µl	Q16680	5
CEA / CD66e	Ms IgG2a	COL-1	+					+	+		+	IF	500 µl	N66710	5
CEA / CD66e	Rb	Pab	+	+				+	+		+		500 µl	N66670	5
CEA / CD66e	Ms IgG1	C365D3	+					+					500 µl	V02540	5
Ceftiofur	Ms IgG1	CH-2034								+			1 ml	O23380	11
CELSR1	Rb	Pab	+					+					50 µl	FT5120	22
CELSR1	Rb	Pab	+					+					50 µl	FT1950	22
CELSR1	Rb	Pab	+	+				+					50 µl	FT5340	22
CELSR1	Rb	Pab	+					+					50 µl	FT5110	22
CELSR1	Rb	Pab	+					+					50 µl	FT5320	22
CELSR2	Rb	Pab	+	+				+					50 µl	FT2070	22
CELSR2	Rb	Pab	+	+				+					50 µl	FT2080	22
CELSR2	Rb	Pab	+	+	+			+					50 µl	FT2090	22
CELSR2	Rb	Pab	+	+	+			+					50 µl	FT2100	22
CELSR3	Rb	Pab	+	+	+			+					50 µl	FT2960	22
CEM15	Ms IgG1	34AT1147	+					+	+				100 µg	GK2390	10-15
CEM15, C-term	Rb	Pab	+					+	+				100 µg	GK4700	10-15
CEM15, middle region D143	Rb	Pab	+					+	+				100 µg	GK4690	10-15
CEM15, middle region E133	Rb	Pab	+					+	+				100 µg	GK4680	10-15
CEM15, N-term	Rb	Pab	+					+	+				100 µg	GK4670	10-15
CENP-A, <i>Advanced</i> panel	Rb	Pab	+					+	+				1x100µl	BF1260	10
CENP-B, <i>Advanced</i> panel	Rb	Pab	+					+	+				2x100µl	BG1620	10
CENP-C1, <i>Advanced</i> panel	Rb	Pab	+					+	+				2x100µl	GR5410	10
CENP-E, <i>Advanced</i> panel	Rb	Pab	+					+	+				2x100µl	GR4250	10
CENP-F	Rb	Pab	+					+			+	IF	50 µl	AW8790	23-3
CENP-F, <i>Advanced</i> panel	Rb	Pab	+					+	+				3x100µl	GR5840	10
CENP-H, <i>Advanced</i> panel	Rb	Pab	+					+	+				3x100µl	GR5220	10
CENP-J, <i>Advanced</i> panel	Rb	Pab	+					+	+				2x100µl	GR3920	10
Cephalosporin C/Cephapirin	Ms IgG1	CH-2025						+	+				1 ml	O23400	11
C-erb-1	Ms IgG1	C11	+					+					100 µg	O08190	9-20
C-erbB-2 / HER-2 / neu	Ms IgG1	PN2A	+	+				+		+	+	IF	500 µl	N67020	9-20
C-erbB-2 / HER-2 / neu	Ms IgG1	2ERB19	+					+					500 µl	Q17770	9-20
C-erbB-2 / HER-2 / neu	Ms IgG1	cocktail	+					+					500 µl	Q17430	9-20
C-erbB-2 / HER-2 / neu	Ms IgG1	9G6.10	+					+		+	+	IF	500 µl	928611	9-20
C-erbB-2 / HER-2 / neu	Ms IgG1	L87	+					+					500 µl	928621	9-20
C-erbB-2 / HER-2 / neu	Ms IgG1	N12	+					+			-	EM,IF	500 µl	N67080	9-20
C-erbB-2 / HER-2 / neu	Ms IgG1	N24	+	-	-					+		IF	500 µl	N67100	9-20
C-erbB-2 / HER-2 / neu	Ms IgG1	N28	+	-	-					+			500 µl	N67120	9-20
C-erbB-2 / HER-2 / neu	Ms IgG2a	N29									+		500 µl	N67140	9-20
C-erbB-2 / HER-2 / neu	Ms IgG1	e2-4001	+	+	+			+	+		+		500 µl	N67170	9-20
C-erbB-2 / HER-2 / neu	Ms IgG1	B10			+					+	+	IF	500 µl	N67190	9-20
C-erbB-2 / HER-2 / neu	Ms IgG1	cocktail	+								+		500 µl	928631	9-20
C-erbB-2 / HER-2 / neu	Ms IgG1	CB11	+					+					500 µl	N66880	9-20
C-erbB-2 / HER-2 / neu	Ms IgG1	3B5	+	+	+	Mk		+	+		+		500 µl	N66920	9-20
C-erbB-2 / HER-2 / neu	Ms IgG1	L26	+					-	-				500 µl	N66940	9-20
C-erbB-2 / HER-2 / neu	Ms IgG1	cocktail	+	+				+	+		+		500 µl	N66970	9-20
C-erbB-2 / HER-2 / neu	Rb	Pab	+					+			+		500 µl	Q17510	9-20
C-erbB-2 / HER-2 / neu	Rb	Pab	+	+	+	Mk		+	+		+		500 µl	AA6811	9-20
C-erbB-2 / HER-2 / neu	Rb IgG	SP3	+					+					500 µl	V16950	9-20
C-erbB-2 / HER-2 / neu	Rt IgG2a	ICR12	+					+					500 µl	V17740	9-20
C-erbB-2 / HER-2 / neu (21N)	Rb	Pab	+	+	+	Mk		+	+		+		500 µl	N66810	9-20
C-erb-3 / HER-3	Rb	Pab	+					+	+				500 µl	GH5702	9-20
C-erbB-3 / HER-3	Ms IgG1	RTJ.2	+		+	Bv		-	+				500 µl	N67230	9-20

Immunologicals

A.66

interchim

### Research Area Code

- |   |  |   |   |  |
|---|--|---|---|--|
| 1 Allergens                             | 6 Cardiac Markers and related molecules  | 11 Drugs and resistance                             | 16 Lipides/Apolipo/Lipoproteins             | 20 Neuroscience                        |
| 2 Anglo/Histogenesis                    | 7 CD Markers                             | 12 Enzymes & enzymes inhibitors                     | 17 Membrane channels and transport proteins | 21 Post translational modifications    |
| 3 Apoptosis/cell cycle                  | 8 Cell adhesion                          | 13 Hematopoietic markers                            | 18 Metabolism/Energy pathways               | 22 Signal transduction/Stress response |
| 4 Blood and serum proteins              | 9 Cytokine/Chemokine/Growth factors      | 14 Hormones/Steroids                                | 19 Miscellaneous                            | 23 Structural proteins                 |
| 5 Cancer, Hypoxia and related molecules | 10 DNA Replication/Transcription/Repairs | 15 Infectious agents related molecules & resistance |   | 24 Tags and Markers                    |

# Primary Antibodies & Ags

## Alphabetical Listing

Name	Host - Isotype	Clone	Species Reactivity				Application						Size	Cat.#	Research Area	
			Hu	Ms	Rt	Other	WB	IHC	ICC	EL	FC	IP				Other
C-erbB-3 / HER-3	Ms IgG2a	2F12	+	+	+	Bv	+							500 µl	N67300	9-20
C-erbB-3 / HER-3	Ms IgG2a	H3.90.6	+				-			+	+	IF		500 µl	N67320	9-20
C-erbB-3 / HER-3	Ms IgG1	H3.105.5	+	+			-			+	+	IF		500 µl	N67340	9-20
C-erbB-3 / HER-3	Ms IgG1	2B5	+	+	+		+				+			500 µl	N67370	9-20
C-erbB-3 / HER-3	Ms IgG1	2C3	+	+	+		+				+			500 µl	N67400	9-20
C-erbB-3 / HER-3	Ms IgG1	SGP1	+				-	+		+				500 µl	N67420	9-20
C-erbB-3 / HER-3	Rb	Pab	+				-	-			+			500 µl	N67460	9-20
C-erbB-3 / HER-3	Rb	Pab	+				-	+			+			500 µl	N67250	9-20
C-erbB-4 / HER-4	Rb	Pab	+				-	+			+			500 µl	AK7201	9-20
C-erbB-4 / HER-4	Ms IgG1	H4.77.16	+	+	+		-			+	+			500 µl	759040	9-20
C-erbB-4 / HER-4	Ms IgG2a	H4.72.8	+				-			+				500 µl	759070	9-20
C-erbB-4 / HER-4	Ms IgG2b	HFR-1	+	+			+							500 µl	N67510	9-20
C-erbB-4 / HER-4	Rb	Pab	+	+	+		+							500 µl	N67490	9-20
Ceruloplasmin	Rb	Pab	+				+		+					100 µl	I66010	18-4
Ceruloplasmin	Gt	Pab	+				+		+					100 µg	GS9230	18-4
Ceruloplasmin	Gt	Pab	+				+		+					1 mg	AL1170	4
Ceruloplasmin	Gt	Pab	+									IEP,DD	2 ml	Q02080	4	
Ceruloplasmin	Sh	Pab	+									RID,DD+	1 ml	O26450	19	
C-Ets-1	Rb	Pab	+				+							100 µl	GS2120	3
C-Fos	Rb	Pab	+				+	+						500 µl	Q18223	3
C-Fos	Rb	Pab	+	+			+							100 µl	GS1970	3
C-Fos	Rb	Pab	+	+	+		+	-			+			500 µl	Q18230	5
C-Fos, <i>Nushift</i>	Rb	Pab	+	+								GS		100 µl	GS1800	3
C-FMS, see CD115																
CFTR	Ms IgG1	MM13-4	+						+			IF		500 µl	Q20240	23
CFTR	Ms IgG1	L12B4	+	+	+				+			+	IF	500 µl	Q20290	23
CFTR	Ms IgG1	M3A7	+	+	+				+	+		+	IF	500 µl	Q20330	23
cGKI beta, C-term	Rb	Pab	+	+			+	+	+					100 µg	GL6310	22-21
cGKII, C-term	Rb	Pab	+				+		+					100 µg	GL6320	22-21
CHAK1, C-term	Rb	Pab	+				+		+					100 µg	GL6890	17-21
CHAK1, N-term	Rb	Pab	+				+	+	+					100 µg	GL6880	17-21
CHAK2, C-term	Rb	Pab	+				+		+					100 µg	GL6900	17-21
CHAK2, middle region	Rb	Pab	+				+		+					100 µg	GL6910	17-21
Chemokine C-C Receptor 1	Rb	Pab	+	+			+							50 µl	FS9270	22-9
Chemokine C-C Receptor 2	Rb	Pab	+				+							50 µl	FT1900	22-9
Chemokine C-C Receptor 2	Rb	Pab	+				+							50 µl	FT1910	22-9
Chemokine C-C Receptor 3	Rb	Pab	+				+							50 µl	FS9680	22-9
Chemokine C-C Receptor 3	Rb	Pab	+	+			+							50 µl	FS9690	22-9
Chemokine C-C Receptor 6	Rb	Pab	+				+							50 µl	FT3450	22-9
Chemokine C-C Receptor 6	Rb	Pab	+				+							50 µl	FT3420	22-9
Chemokine C-C Receptor 7	Rb	Pab	+				+							50 µl	FT4310	22-9
Chemokine C-C Receptor 7	Rb	Pab	+	+	+		+							50 µl	FT6340	22-9
Chemokine C-C Receptor 8	Rb	Pab	+				+							50 µl	FT3770	22-9
Chemokine C-C Receptor 9	Rb	Pab	+				+							50 µl	FT6620	22-9
Chemokine C-C Receptor 9	Rb	Pab	+	+	+		+							50 µl	FT6630	22-9
Chemokine C-C Receptor-Like 1	Rb	Pab	+	+			+							50 µl	FS9740	22-9
Chemokine C-C Receptor-Like 1	Rb	Pab	+		+		+							50 µl	FS9750	22-9
Chemokine C-C Receptor-Like 2	Rb	Pab	+				+							50 µl	FS8990	22-9
Chemokine C-C Receptor-Like 2	Rb	Pab	+				+							50 µl	FS9000	22-9
Chemokine CC-1, hemofiltrate	Rb	Pab	+				+		+			Neut		50 µg	AR4790	9
Chemokine CC-1, hemofiltrate -Biotin	Rb	Pab	+				+		+					25 µg	AR2890	9
Chemokine CC-1/3 (aa. 1-16)	Rb	Pab	+				+		+			RIA		20 µl	GG3910	9
Chemokine CC-1/3 (aa. 21-35)	Rb	Pab	+				+		+					20 µl	GG3920	9
Chemokine CC-1/3 (aa. 44-55)	Rb	Pab	+				+		+					20 µl	GG3930	9
Chemokine CC-1/3 (aa. 62-74)	Rb	Pab	+				+		+					20 µl	GG3900	9

**Species legend :** Bd : Bird, Bv : Bovine, Ck : Chicken or Hen, Ct : Feline, Dg : Canine, Dr : Drosophila, Eq : Equine, F : Fish, Fr : Frog, Ft : Ferret, GP : Guinea Pig, Gt : Goat, Hm : Hamster, Hrs : Horse, Hu : Human, Ko : Kangaroo, M : Mammalian, Mi : Mink, Mk : Monkey, Ms : Mouse, Ne : Nematode, Op : Opossum, Pl : plant, Ql : Quail, Rb : Rabbit, Rt : Rat, Sh : Sheep, Sw : Porcine, Sy Hm : Syrian Hamster, Xe : Xenopus, Ye : Yeast

**Size :** Size indicated in bold means several sizes and formats are available (sample size or bigger size, unpurified neat serum, without azide or BSA, positive control...) : contact us for more detail

**Application legend :** Bk : Blocking, CD : Cell detection, Ch : ChIP, COA : ELISA capture, Db : Dot Blot, DD : Double diffusion, EL : ELISA detection, EM : Electron Microscopy, FCM : Flow Cytometry, FIA : FluoroImmunoAssay, GS : Gel (super)shift, HA : Hemagglutination/Latex agglutination, ICC : ImmunoCytoChemistry, IEP : Immunoelectrophoresis, IF : Immunofluorescence, IHC : ImmunoHistoChemistry, IP : Immunoprecipitation/Immunopurification, ISH : In Situ Hybridization, KA : Kinase assay, LF : Lateral flow, Neph : Nephelometry, Neut : Neutralizing, RIA : RadioImmunoassay, RID : Radial Immunodiffusion, SB : Southern Blot, TIA : Turbidimetry

**Name :** Prefixes as 'alpha', 'D1-', 'Pro',... are not considered for the alphanumerical sorting, and often included after the main name.

(+): Expected species cross-reactivities based on immunogen sequence homology \_ Expected application suitability.

# Primary Antibodies & Ags

## Alphabetical Listing

Name	Host - Isotype	Clone	Species Reactivity				Application						Size	Cat.#	Research Area
			Hu	Ms	Rt	Other	WB	IHC	EL	FC	IP	Other			
Chemokine CC-1/3 (aa. 8-15)	Rb	Pab	+					+					20 µl	GG3940	9
Chemokine CC-2 (aa. 18-31)	Rb	Pab	+					+					20 µl	GG3950	9
Chemokine CC-2 (aa. 34-49)	Rb	Pab	+								RIA		20 µl	GG3960	9
Chemokine CC-2 (aa. 78-92)	Rb	Pab	+					+					20 µl	GG3970	9
Chemokine-Like Receptor 1	Rb	Pab	+						+				50 µl	FT4560	22-9
Chemokine-Like Receptor 1	Rb	Pab	+						+				50 µl	FT4550	22-9
Chk 1	Gt	Pab	+					+					100 µl	AW6470	5-10-21-22
Chk 1, phospho (ser 317)	Rb	Pab	+					+					100 µl	AW6460	5-10-21-22
Chk1	Gt	Pab	+					+					100 µg	AL0630	5-10-21-22
Chk1	Rb	Pab	+					+			+		100 µg	GR5050	5-10-21-22
Chk1	Gt	Pab	+					+			+		100 µg	GR5550	5-10-21-22
Chk1	Ms IgG2b	DCS-300	+					+					500 µl	S39410	5-10-21-22
Chk1	Gt	Pab	+					+			+		100 µl	AW4460	5-10-21-22
Chk1, C-term	Rb	Pab	+					+	+	+			100 µg	GL3200	5-10-21-22
Chk1, phospho Ser317 (BL229)	Rb	Pab	+					+					100 µg	AL0640	5-10-21-22
Chk2	Ms IgG1	2CHK01	+					+			+	IF	500 µl	Q18290	5-10-21-22
Chk2	Ms IgG2a	#4	+								+	IF	500 µl	S38580	5-10-21-22
Chk2	Ms IgG1	#7	+					+				IF	500 µl	S38620	5-10-21-22
Chk2	Ms IgG2a	DCS-270	+					+	+				500 µl	S39460	5-10-21-22
Chk2	Ms IgG2a	DCS-273	+					+					500 µl	V09260	5-10-21-22
Chk2	Ms IgG1	DCS-350	+					+					500 µl	V09330	5-10-21-22
Chk2, <i>Advanced</i> panel	Rb	Pab	+							+			4x100µl	GR3490	5-10-21-22
Chk2, C-term	Rb	Pab	+					+	+	+			100 µg	GL3260	5-10-21-22
Chlamydia	Rb	Pab					+						1 mg	U71810	15
Chlamydia	GP	Pab								+		COA,IF	1 ml	N92660	15
Chlamydia	Rb	Pab						+	+				1 ml	N92670	15
Chlamydia pneumoniae	Ms IgG2	M73066				+		+	+	+			200 µg	P43540	15
Chlamydia pneumoniae	Ms IgG2a	165								+		IF	100 µg	N95900	15
Chlamydia pneumoniae	Ms IgG2a	161						+	+	+		IF	100 µg	N95910	15
Chlamydia species	Ms IgG2b	164								+		IF	100 µg	N94870	15
Chlamydia trachomatis	Ms IgG2a	M4020311				+		+	+				1 mg	P43550	15
Chlamydia trachomatis	Gt	Pab				+		+	+	+			1 mg	P49080	15
Chlamydia trachomatis, LPS -FITC	Ms IgG	M9980309				+		+					100 µg	P43560	15
Chlamydia trachomatis -FITC	Ms IgG2	163											100 µg	O02050	15
Chlamydia trachomatis -FITC	Gt	Pab				+		+					1 ml	U72460	15
Chlamydia trachomatis -FITC	Gt	Pab				+		+					1 ml	U72470	15
Chlamydia trachomatis -FITC	Rb	Pab				+		+					1 ml	U72450	15
Chlamydia trachomatis -HRP	Gt	Pab				+		+	+	+			1 ml	P42330	15
Chlamydia trachomatis, EB	Gt	Pab								+		IF	1 ml	E93150	15
Chlamydia trachomatis, EB	Rb	Pab								+		IF	1 ml	N88830	15
Chlamydia trachomatis, EB -Biotin	Gt	Pab								+		IF	1 ml	GG0320	15
Chlamydia trachomatis, EB -Biotin	Rb	Pab								+		IF	1 ml	N91110	15
Chlamydia trachomatis, EB -FITC	Gt	Pab								+		IF	1 ml	N91120	15
Chlamydia trachomatis, EB -FITC	Rb	Pab								+		IF	1 ml	N91130	15
Chlamydia trachomatis, EB -HRP	Gt	Pab								+		IF	1 ml	N91140	15
Chlamydia trachomatis, EB -HRP	Rb	Pab								+		IF	1 ml	N94620	15
Chlamydia trachomatis, LPS	Ms IgG2	163								+		IF	100 µg	N94860	15
Chlamydia trachomatis, MOMP	Ms IgG2a	M211015				+							1 mg	P43570	15
Chlamydia trachomatis, MOMP	Gt	Pab				+		+					1 mg	P49090	15
Chlamydia trachomatis, MOMP	Gt	Pab										IF	1 ml	O26690	15
Chlamydia trachomatis, MOMP	Ms IgG3	103								+			1 ml	O10900	15
Chlamydia trachomatis, MOMP	Ms IgG2a	135											1 ml	O10910	15
Chlamydia trachomatis, MOMP	Ms IgG2a	156											1 ml	O10920	15
Chlamydia trachomatis, MOMP	Ms IgG3	115											1 ml	O10880	15
Chlamydia trachomatis, MOMP	Ms IgG2a	130											1 ml	O10890	15

Immunologicals

A.68

interchim

### Research Area Code

- |   |  |   |   |  |
|---|--|---|---|--|
| 1 Allergens                             | 6 Cardiac Markers and related molecules  | 11 Drugs and resistance                             | 16 Lipides/Apolipo/Lipoproteins             | 20 Neuroscience                        |
| 2 Anglo/Histogenesis                    | 7 CD Markers                             | 12 Enzymes & enzymes inhibitors                     | 17 Membrane channels and transport proteins | 21 Post translational modifications    |
| 3 Apoptosis/cell cycle                  | 8 Cell adhesion                          | 13 Hematopoietic markers                            | 18 Metabolism/Energy pathways               | 22 Signal transduction/Stress response |
| 4 Blood and serum proteins              | 9 Cytokine/Chemokine/Growth factors      | 14 Hormones/Steroids                                | 19 Miscellaneous                            | 23 Structural proteins                 |
| 5 Cancer, Hypoxia and related molecules | 10 DNA Replication/Transcription/Repairs | 15 Infectious agents related molecules & resistance |   | 24 Tags and Markers                    |

# Primary Antibodies & Ags

## Alphabetical Listing

Name	Host - Isotype	Clone	Species Reactivity				Application						Size	Cat.#	Research Area	
			Hu	Ms	Rt	Other	WB	IHC	EL	FC	IP	Other				
Chlamydia trachomatis, MOMP	Ms IgG2a	BIOD166											IF	100 µg	<b>N62650</b>	15
Chlamydia trachomatis, MOMP	Ms IgG2	165										+	IF	100 µg	<b>N94850</b>	15
Chlamydia trachomatis, MOMP -Biotin	Gt	Pab											IF	1 ml	<b>N89670</b>	15
Chlamydia trachomatis, MOMP -FITC	Gt	Pab											IF	1 ml	<b>N89680</b>	15
Chlamydia trachomatis, MOMP -FITC	Ms IgG2	165										+	IF	100 µg	<b>O02040</b>	15
Chlamydia trachomatis, MOMP -HRP	Gt	Pab											IF	1 ml	<b>978811</b>	15
Chlamydia trachomatis, MOMP -HRP	Gt	Pab					+		+	+	+			1 ml	<b>P42320</b>	15
Chloramphenicol	Ms IgG2b	BDI222												1 mg	<b>AL7890</b>	11
Chloride channel 1	Rb	Pab	+	+	+	Dg		+		+				<b>100 µg</b>	<b>I08020</b>	17
Chloride channel 1	Rb	Pab	(+)	(+)	+			+		+				<b>100 µg</b>	<b>I27620</b>	17
Chloride channel 2	Rb	Pab	(+)		+	Rb		+		+				<b>100 µg</b>	<b>I29700</b>	17
Chloride channel 3	Rb	Pab	+	+	+	Rb,Fr		+		+				<b>100 µg</b>	<b>I29440</b>	17
Chloride channel 4	Rb	Pab	+	+	+			+		+				<b>100 µg</b>	<b>U13860</b>	17
Chloride channel 5	Rb	Pab	+		+			+		+				<b>100 µg</b>	<b>I27850</b>	17
Chloride channel 6	Rb	Pab	+	+	+			+		+				<b>100 µg</b>	<b>I28350</b>	17
Chloride channel 7	Rb	Pab	(+)	+	+			+		+				<b>100 µg</b>	<b>I28450</b>	17
Chloride channel 7	Rb	Pab	+	(+)	(+)			+		+				<b>100 µg</b>	<b>E23800</b>	17
Chloride channel K1/2	Rb	Pab	(+)		+			+		+				<b>100 µg</b>	<b>I35180</b>	17
Chlorpyrifos	Rb	Pab										+		1 ml	<b>BI8770</b>	11
Cholecystokinin (26-33) (CCK-8)	Rb	Pab	+					+		+				<b>500 µl</b>	<b>V15003</b>	14-20
Cholecystokinin (CCK-8)	Rb	Pab	+							+				<b>500 µl</b>	<b>V15010</b>	14-20
Cholecystokinin Receptor B	Rb	Pab	+							+				<b>50 µl</b>	<b>FS9400</b>	14-20
Cholecystokinin Receptor A (180-195)	Rb	Pab	+											<b>20 µl</b>	<b>GG3870</b>	14-20
Cholecystokinin Receptor A (197-210)	Rb	Pab	+							+				<b>20 µl</b>	<b>BM0850</b>	14-20
Cholecystokinin Receptor B	Rb	Pab	+							+				<b>100 µl</b>	<b>U63531</b>	14-20
Cholecystokinin Receptor B (191-204)	Rb	Pab	+							+				<b>20 µl</b>	<b>GG3880</b>	14-20
Cholera toxin	Ms IgG1	M99081022					+		+	+	+			<b>100 µg</b>	<b>P43580</b>	15
Cholera toxin	Rb	Pab					+			+				1 mg	<b>P49110</b>	15
Cholera toxin	Ms IgG1	190								+				<b>100 µg</b>	<b>N95920</b>	15
Cholera toxin	Ms IgG1	3D11								+				1 mg	<b>N86770</b>	15
Cholera toxin, beta subunit	Rb	Pab								+		+		1 ml	<b>M45940</b>	15
Cholesterol Oxidase	Gt	Pab							+			IEP		<b>50 mg</b>	<b>AM0350</b>	12
Choline Oxidase	Gt	Pab								+		IEP		<b>50 mg</b>	<b>O14580</b>	12
Chromogranin A	Rb	Pab	+		+	Sw,Rb+		+						<b>500 µl</b>	<b>V15960</b>	20
Chromogranin A	Rb IgG	SP12	+					+						<b>500 µl</b>	<b>V17350</b>	20
Chromogranin A	Ms	LK2H10	+		+	Sw,Rb+		+	+					<b>500 µl</b>	<b>N67740</b>	5-20
Chromogranin A	Ms IgG1	PHE5	+			Mk		+				IF		<b>500 µl</b>	<b>N67770</b>	5-20
Chromogranin A	Ms IgG1	cocktail	+			Mk		+						<b>500 µl</b>	<b>N67800</b>	5-20
Chymotrypsin	Rb	Pab	+							+				1 ml	<b>P49130</b>	12
Chymotrypsin	Ms IgG3	602								+		+		1 mg	<b>828060</b>	12
Chymotrypsin	Ms IgG3	601	+							+		+		1 mg	<b>O10930</b>	12
CIDE-3	Rb	Pab	+	(+)				+						<b>100 µl</b>	<b>GP7490</b>	3-5
CIDE-A	Rb	Pab			+			+						<b>500 µl</b>	<b>V11410</b>	19
CIDE-A	Rb	Pab	+					+						<b>500 µl</b>	<b>V13890</b>	3
CIDE-B	Rb	Pab			+			+						<b>500 µl</b>	<b>V13960</b>	3
CIITA	Rb	Pab						+				+		<b>100 µg</b>	<b>P49140</b>	19
Ciliary Neurotrophic Factor	Rb	Pab			+					+				<b>100 µg</b>	<b>O12230</b>	20
Ciliary Factor	Rb	Pab	+					+		+		Neut		<b>50 µg</b>	<b>AR4510</b>	9
Ciliary Factor -Biotin	Rb	Pab	+					+		+				<b>25 µg</b>	<b>AR2610</b>	9
Ciliary Factor -Biotin	Rb	Pab			+			+		+				<b>25 µg</b>	<b>AR4190</b>	9
Ciprofloxacin, see Enrofloxacin																
CIS	Rb	Pab	+	+				+						<b>100 µg</b>	<b>GP7340</b>	9-22
CITED1	Rb	Pab	+							+				<b>500 µl</b>	<b>GH5524</b>	10
CITED2	Ms IgG1	JA22	+	+				+						<b>100 µl</b>	<b>AW5620</b>	10
C-Jun	Rb	Pab	+	+				+						<b>100 µl</b>	<b>GS2080</b>	3

**Species legend :** Bd : Bird, Bv : Bovine, Ck : Chicken or Hen, Ct : Feline, Dg : Canine, Dr : Drosophila, Eq : Equine, F : Fish, Fr : Frog, Ft : Ferret, GP : Guinea Pig, Gt : Goat, Hm : Hamster, Hrs : Horse, Hu : Human, Ko : Kangaroo, M : Mammalian, Mi : Mink, Mk : Monkey, Ms : Mouse, Ne : Nematode, Op : Opossum, Pl : plant, Ql : Quail, Rb : Rabbit, Rt : Rat, Sh : Sheep, Sw : Porcine, Sy Hm : Syrian Hamster, Xe : Xenopus, Ye : Yeast

**Size :** Size indicated in bold means several sizes and formats are available (sample size or bigger size, unpurified neat serum, without azide or BSA, positive control...) : contact us for more detail

**Application legend :** Bk : Blocking, CD : Cell detection, Ch : ChIP, COA : ELISA capture, Db : Dot Blot, DD : Double diffusion, EL : ELISA detection, EM : Electron Microscopy, FCM : Flow Cytometry, FIA : FluoroImmunoAssay, GS : Gel (super)shift, HA : Hemagglutination/Latex agglutination, ICC : ImmunoCytoChemistry, IEP : Immunoelectrophoresis, IF : Immunofluorescence, IHC : ImmunoHistoChemistry, IP : Immunoprecipitation/Immunopurification, ISH : In Situ Hybridization, KA : Kinase assay, LF : Lateral flow, Neph : Nephelometry, Neut : Neutralizing, RIA : RadioImmunoassay, RID : Radial Immunodiffusion, SB : Southern Blot, TIA : Turbidimetry

**Name :** Prefixes as 'alpha', 'D1-', 'Pro-',... are not considered for the alphanumerical sorting, and often included after the main name.

(+): Expected species cross-reactivities based on immunogen sequence homology \_ Expected application suitability.

# Primary Antibodies & Ags

## Alphabetical Listing

Name	Host - Isotype	Clone	Species				Reactivity				Application						Size	Cat.#	Research Area	
			Hu	Ms	Rt	Other	WB	IHC	EL	FC	IP	Other	WB	IHC	EL	FC				IP
C-Jun	Rb	Pab	+	+														500 µl	Q18490	5
C-Jun, <i>Nushift</i>	Rb	Pab	+	+														100 µg	GS2800	3
CK1a, C-term	Rb	Pab	+															100 µg	GL3190	22-21
CK1d, C-term	Rb	Pab	+															100 µg	GL3210	22-21
CK1e, C-term	Rb	Pab	+															100 µg	GL3220	22-21
CK1g1, C-term	Rb	Pab	+															100 µg	GL3230	22-21
CK1g2, C-term	Rb	Pab	+															100 µg	GL3240	22-21
CK1g3, C-term	Rb	Pab	+															100 µg	GL3250	22-21
CKII alpha	Rb	Pab	+															100 µl	BA2450	5-21-12
CKII alpha	Rb	Pab	+															100 µl	BA2451	5-21-12
CKII alpha	Rb	Pab	+															100 µl	BA2452	5-21-12
CKII alpha	Rb	Pab	+															100 µg	GR4780	10-22-21
CKII alpha	Rb	Pab	+															100 µg	GR5970	10-22-21
CKII alpha	Rb	Pab	+															100 µg	AY6940	10-22-21
CKII alpha	Rb	Pab	+															100 µg	GR4220	10-22-21
CKII alpha (prime)	Rb	Pab	+															100 µl	BA2453	5-21-12
C-Kit, see CD117																				
CLAC-P, NC2-1 region	Rb	Pab	+	+														100 µg	GP7910	20
CLAC-P, NC2-2 region	Rb	Pab	+	+														100 µg	GP7860	20
CLAN	Rb	Pab	+															100 µg	AW6480	3-9
cIAP-1	Rb	Pab	+	+														50 µg	Q67910	3
cIAP-2	Rb	Pab	+	+														75 µg	Q67900	3
Claspin	Rb	Pab	+															100 µl	AW8540	5-10
Claspin	Rb	Pab	+															100 µl	AW8530	5-10
Claspin	Rb	Pab	+															100 µl	AW5370	5-10
Claspin	Rb	Pab	+															100 µg	AL0780	5-10
Claspin	Rb	Pab	+															100 µg	AL0790	5-10
Claspin	Rb	Pab	+															100 µg	AL0800	5-10
Clathrin	Ms IgM	CHC5.9	+															100 µg	O19360	23
Clathrin	Ms IgG2b	CON.1	+															500 µl	Q18550	23
Clathrin	Ms IgG1	TD.1	+															500 µl	Q18590	23
Claudin 1	Rb	Pab	+	+														500 µl	V12260	17-8
Claudin 1	Rb	Pab	+	+														500 µl	GH5951	17-8
Claudin 2	Rb	Pab	+	+														500 µl	GH6002	17-8
Claudin 3	Rb	Pab	+	+														500 µl	GH5562	17-8
Claudin 4	Rb	Pab	+	+														500 µl	GH5980	17-8
Claudin 5	Rb	Pab	+	+														500 µl	GH6061	17-8
Claudin 16, see Paracellin-1																				
CLK1, N-term	Rb	Pab	+															100 µg	GL3630	22-21
CLK2, N-term	Rb	Pab	+															100 µg	GL3640	22-21
CLK3, N-term	Rb	Pab	+	+														100 µg	GL3650	22-21
CLK4, N-term	Rb	Pab	+	+														100 µg	GL3660	22-21
Clock	Rb	Pab	+	(+)	(+)	(+)												100 µg	I31710	10
Clock	Rb	Pab	(+)	+														100 µg	I30510	10
Clock	Rb	Pab																100 µg	I80140	10
Clock	Rb	Pab	(+)															100 µl	AW9030	10
Clonidine	Rb	Pab																500 µl	P49160	11
Clostridium botulinum, Type A	Rb	Pab																0.3 mg	GG3850	15
Clostridium botulinum, Type A	Rb	Pab																1 mg	BL9950	15
Clostridium botulinum, Type A	Rb	Pab																1 mg	BL9951	15
Clostridium botulinum, Type A	Rb	Pab																1 mg	BL9952	15
Clostridium botulinum, Type B	Rb	Pab																1 mg	BL9940	15
Clostridium Botulinum, Type D Toxoid	Ms IgG1	M01102810																1 mg	U68170	15
Clostridium Botulinum, Type D Toxoid	Ms IgG1	KB21																1 mg	O01500	15
Clostridium Botulinum, Type D Toxoid	Ms IgG1	KB22																1 mg	N78450	15

Immunologicals

A.70

interchim

### Research Area Code

- |   |  |   |   |  |
|---|--|---|---|--|
| 1 Allergens                             | 6 Cardiac Markers and related molecules  | 11 Drugs and resistance                             | 16 Lipides/Apolipo/Lipoproteins             | 20 Neuroscience                        |
| 2 Anglo/Histogenesis                    | 7 CD Markers                             | 12 Enzymes & enzymes inhibitors                     | 17 Membrane channels and transport proteins | 21 Post translational modifications    |
| 3 Apoptosis/cell cycle                  | 8 Cell adhesion                          | 13 Hematopoietic markers                            | 18 Metabolism/Energy pathways               | 22 Signal transduction/Stress response |
| 4 Blood and serum proteins              | 9 Cytokine/Chemokine/Growth factors      | 14 Hormones/Steroids                                | 19 Miscellaneous                            | 23 Structural proteins                 |
| 5 Cancer, Hypoxia and related molecules | 10 DNA Replication/Transcription/Repairs | 15 Infectious agents related molecules & resistance |   | 24 Tags and Markers                    |

# Primary Antibodies & Ags

## Alphabetical Listing

Name	Host - Isotype	Clone	Species Reactivity				Application						Size	Cat.#	Research Area	
			Hu	Ms	Rt	Other	WB	IHC	EL	FC	IP	Other				
Clostridium botulinum, Type D Toxoid	Ms IgG1	KB23														
Clostridium botulinum, Type E	Rb	Pab														
Clostridium botulinum, Type E	Rb	Pab														
Clostridium botulinum, Type E Toxoid	Ms IgG1	BE3														
Clostridium botulinum, Type E Toxoid	Ms IgG1	BE2														
Clostridium difficile	Rb	Pab														
Clostridium difficile Toxin A	Rb	Pab														
Clostridium difficile Toxin A	Rb	Pab														
Clostridium difficile, Toxin A	Gt	Pab														
Clostridium difficile, Toxin A	Gt	Pab														
Clostridium difficile, Toxin A	Ms IgG2a	PCG4														
Clostridium difficile, Toxin A	Ms IgG2a	PCG4														
Clostridium difficile, Toxin B	Ms IgG1	5A8-E11														
Clostridium difficile, Toxin B	Ms IgG1	5A8-E11														
Clostridium species	Rb	Pab														
C-Maf	Rb	Pab														
C-Myb	Rb	Pab														
C-Myb / v-myb	Ms IgG2a	4E3														
C-Myb, Sumoylation site	Rb	Pab														
C-Myc	Ms	Mab														
C-Myc	Ck	Pab														
C-Myc	Gt	Pab														
C-Myc	Rb	Pab														
C-Myc	Ck	Pab														
C-Myc	Gt	Pab														
C-Myc	Rb	Pab														
C-Myc	Sh	Pab														
C-Myc	Rb	Pab														
C-Myc	Rb	Pab														
C-Myc	Ms IgG1	9E11														
C-Myc	Ms IgG1	67P05														
C-Myc	Ms IgG2a	9E11														
C-Myc	Ms	C-8														
C-Myc	Rb	Pab														
C-Myc	Ck	Pab														
C-Myc	Gt	Pab														
C-Myc	Rb	Pab														
C-Myc	Ck	Pab														
C-Myc	Gt	Pab														
C-Myc	Rb	Pab														
C-Myc	Ms IgG1	9E10.3														
C-myc (aa. 408-438)	Ms IgG1	9E10														
C-Myc -Agarose	Gt	Pab														
C-Myc -Agarose	Gt	Pab														
C-Myc -Alkaline Phosphatase	Ms	Mab														
C-Myc epitope	Rb	Pab														
C-Myc epitope	Ck	Pab														
C-Myc epitope	Rb	Pab														
C-Myc epitope -HRP	Rb	Pab														
C-Myc -FITC	Gt	Pab														
C-Myc -FITC	Gt	Pab														
C-Myc -HRP	Gt	Pab														
C-Myc -HRP	Rb	Pab														
C-Myc -HRP	Gt	Pab														
C-Myc -HRP	Rb	Pab														

**Species legend :** Bd : Bird, Bv : Bovine, Ck : Chicken or Hen, Ct : Feline, Dg : Canine, Dr : Drosophila, Eq : Equine, F : Fish, Fr : Frog, Ft : Ferret, GP : Guinea Pig, Gt : Goat, Hm : Hamster, Hrs : Horse, Hu : Human, Ko : Kangaroo, M : Mammalian, Mi : Mink, Mk : Monkey, Ms : Mouse, Ne : Nematode, Op : Opossum, Pl : plant, Ql : Quail, Rb : Rabbit, Rt : Rat, Sh : Sheep, Sw : Porcine, Sy Hm : Syrian Hamster, Xe : Xenopus, Ye : Yeast

**Size :** Size indicated in bold means several sizes and formats are available (sample size or bigger size, unpurified neat serum, without azide or BSA, positive control...) : contact us for more detail

**Application legend :** Bk : Blocking, CD : Cell detection, Ch : ChIP, COA : ELISA capture, Db : Dot Blot, DD : Double diffusion, EL : ELISA detection, EM : Electron Microscopy, FCM : Flow Cytometry, FIA : FluoroImmunoAssay, GS : Gel (super)shift, HA : Hemagglutination/Latex agglutination, ICC : ImmunoCytoChemistry, IEP : Immunoelectrophoresis, IF : Immunofluorescence, IHC : ImmunoHistoChemistry, IP : Immunoprecipitation/Immunopurification, ISH : In Situ Hybridization, KA : Kinase assay, LF : Lateral flow, Neph : Nephelometry, Neut : Neutralizing, RIA : RadioImmunoassay, RID : Radial Immunodiffusion, SB : Southern Blot, TIA : Turbidimetry

**Name :** Prefixes as 'alpha', 'D1-', 'Pro'-... are not considered for the alphanumerical sorting, and often included after the main name.

(+): Expected species cross-reactivities based on immunogen sequence homology \_ Expected application suitability.

# Primary Antibodies & Ags

## Alphabetical Listing

Name	Host - Isotype	Clone	Species Reactivity				Application						Size	Cat.#	Research Area	
			Hu	Ms	Rt	Other	WB	IHC ICC	EL	FC	IP	Other				
C-Myc peptide	Gt	Pab						+	+					100 µg	S35720	24-3
C-Myc peptide	Ck	Pab						+	+					100 µg	S35710	24-3
C-Myc peptide	Rb	Pab						+	+	+		+	IF	100 µg	S35700	24-3
C-Myc protein	Rb	Mab	+					+	+					100 µg	GS9280	24
C-Myc Tag	Ms IgG1	9E10						+	+					100 µg	GK2260	24
CNK, C-term	Rb	Pab	+					+	+					100 µg	GL6770	22-21
CNPase	Ms IgG1	11-5B	+	+	+	Sw,Rb+		+	+				IF	500 µl	N68030	20
CNTF	Rb	Pab				+		+	+				Neut	50 µg	AR6140	9
CoAA	Rb	Pab	+					+						100 µg	GR4540	10
Cocaine	Rb	Pab				+			+					1 ml	U71820	11
Cocaine Amphetamine Rel. Transcript	Rb	Pab		+	+			+	+					100 µg	F96300	11
Cocaine Amphetamine Rel. Transcript	Ck	Pab		+	+			+	+					100 µl	I53680	11
Cocaine-KLH	Gt	Pab				+			+					1 ml	P49170	11
Cocaine-KLH	Sh	Pab				+			+					1 ml	871320	11
Cohesin, Scc1-subunit	Ms IgG1	Mab	+					+						100 µl	GP7840	3
COL1A1, C-term	Rb	Pab	+						+					100 µg	GL0160	23-2
Collagen Type I	Rb	Pab				Bv			+			IF,RIA	500 µl	O14140	23	
Collagen Type I	Rb	Pab				Ck		+	+			IF	500 µl	O16210	23	
Collagen Type I	Rb	Pab						+	+	+				250 µg	P61520	23
Collagen Type I	Ms IgG1	BDI314	+					+	+			Db	100 µg	O09920	23	
Collagen Type I	Gt	Pab	+					+	+			Db	200 µg	O14850	23	
Collagen Type I	Rb	Pab	+					+				IF,RIA	500 µl	O14150	23	
Collagen Type I	Rb	Pab			+				+			IF,RIA	500 µl	O16220	23	
Collagen Type I	Rb	Pab			+				+			IF,RIA	500 µl	523210	23	
Collagen Type I	Rb	Pab	+					+	+				500 µg	O19980	23	
Collagen Type I	Rb	Pab				F			+			IF,RIA	500 µl	O18730	23	
Collagen Type I -Biotin	Gt	Pab	+					+	+			Db	200 µg	O20910	23	
Collagen Type I,II,III	Ms IgM	MC1-HA	+					+	+				1 ml	O09350	23	
Collagen Type II	Rb	Pab				Ck			+			IF,RIA	500 µl	O16230	23	
Collagen Type II	Rb	Pab			+			+	+			IF,RIA	500 µl	O16240	23	
Collagen Type II	Rb	Pab				Bv			+			IF,RIA	500 µl	O14160	23	
Collagen Type II	Rb	Pab							+				250 µg	P61530	23	
Collagen Type II	Gt	Pab				Bv		+	+			Db	200 µg	846440	23	
Collagen Type II	Rb	Pab			+				+			IF,RIA	500 µl	O16250	23	
Collagen Type II	Rb	Pab	+						+			IF,RIA	500 µl	O14170	23	
Collagen Type II	Rb	Pab	+					+	+	+			500 µg	O19990	23	
Collagen Type II	Ms IgG2a	5B2.5	+	+		Ck		+	-			IF	500 µl	N68070	23	
Collagen Type II	Ms IgG2a	2B1.5	+	+	+	Bv,Ck		+	+		+	IF	500 µl	280581	23	
Collagen Type II	Ms IgG1	6B3	+	+		Ck		+	+			IF	500 µg	842231	23	
Collagen Type II -Biotin	Gt	Pab				Bv		+	+			Db	200 µg	O20920	23	
Collagen Type III	Rb	Pab	+						+			IF,RIA	500 µl	O14190	23	
Collagen Type III	Rb	Pab				Ck			+			IF,RIA	500 µl	O16260	23	
Collagen Type III	Rb	Pab				Bv			+			IF,RIA	500 µl	O14180	23	
Collagen Type III	Rb	Pab						+	+	+			250 µg	P61540	23	
Collagen Type III	Ms IgG1	BDI343	+					+	+				100 µl	N96440	23	
Collagen Type III	Ms IgM	MC3-HA	+					+	+			RIA,Db	1 ml	O09360	23	
Collagen Type III	Gt	Pab	+					+	+			Db	200 µg	O14860	23	
Collagen Type III	Rb	Pab			+			+	+			RIA	500 µl	O16270	23	
Collagen Type III	Rb	Pab	+					+	+	+			500 µg	O20000	23	
Collagen Type III -Biotin	Gt	Pab	+					+	+			Db	200 µg	O20930	23	
Collagen Type III, pro-	Rb	Pab	+						+			IF,RIA	500 µl	O14230	23	
Collagen Type IV	Rb	Pab	+						+			IF,RIA	500 µl	O14210	23	
Collagen Type IV	Rb	Pab			+			+	+			IF,RIA	500 µl	O18100	23	
Collagen Type IV	Rb	Pab						+	+	+			250 µg	P61550	23	
Collagen Type IV	Ms IgM	MC4-HA	+					+	+				1 ml	O16870	23	

Research Area Code

- |   |  |   |   |  |
|---|--|---|---|--|
| 1 Allergens                             | 6 Cardiac Markers and related molecules  | 11 Drugs and resistance                             | 16 Lipides/Apolipo/Lipoproteins             | 20 Neuroscience                        |
| 2 Anglo/Histogenesis                    | 7 CD Markers                             | 12 Enzymes & enzymes inhibitors                     | 17 Membrane channels and transport proteins | 21 Post translational modifications    |
| 3 Apoptosis/cell cycle                  | 8 Cell adhesion                          | 13 Hematopoietic markers                            | 18 Metabolism/Energy pathways               | 22 Signal transduction/Stress response |
| 4 Blood and serum proteins              | 9 Cytokine/Chemokine/Growth factors      | 14 Hormones/Steroids                                | 19 Miscellaneous                            | 23 Structural proteins                 |
| 5 Cancer, Hypoxia and related molecules | 10 DNA Replication/Transcription/Repairs | 15 Infectious agents related molecules & resistance |   | 24 Tags and Markers                    |

# Primary Antibodies & Ags

## Alphabetical Listing

Name	Host - Isotype	Clone	Species Reactivity				Application						Size	Cat.#	Research Area	
			Hu	Ms	Rt	Other	WB	IHC	EL	FC	IP	Other				
Collagen Type IV	Ms IgG2b	1042	+					+	+	+				1 ml	<b>O16950</b>	23
Collagen Type IV	Gt	Pab	+			Bv		+	+				Db	200 µg	<b>O14870</b>	23
Collagen Type IV	Rb	Pab	+					+	+	+				500 µg	<b>796691</b>	23
Collagen Type IV	Rb	Pab				Bv		+	+				IF	500 µl	<b>O14200</b>	23
Collagen Type IV	Ms IgG1	PHM-12	+					+						<b>500 µl</b>	<b>N68110</b>	23
Collagen Type IV	Ms IgG1	CIV22	+			Bv		+						<b>500 µl</b>	<b>N68140</b>	23
Collagen Type IV	Ms IgG1	cocktail	+					+						<b>500 µl</b>	<b>N68180</b>	23
Collagen Type IV -Biotin	Gt	Pab	+			Bv		+	+				Db	200 µg	<b>O20940</b>	23
Collagen Type V	Rb	Pab												250 µg	<b>P61560</b>	23
Collagen Type V	Ms IgG2a	1E2-E4	+					+	+	+				100 µg	<b>N87300</b>	23
Collagen Type V	Ms IgM	MC5-HA	+							+				1 ml	<b>O09380</b>	23
Collagen Type V	Gt	Pab	+			Bv		+	+				Db	200 µg	<b>O14880</b>	23
Collagen Type V	Rb	Pab			+					+			IF,RIA	500 µl	<b>O16290</b>	23
Collagen Type V	Rb	Pab	+							+			IF,RIA	500 µl	<b>O14220</b>	23
Collagen Type V	Rb	Pab	+					+	+	+				500 µg	<b>O20010</b>	23
Collagen Type V	Rb	Pab				Ck		+		+			IF,RIA	500 µl	<b>O16280</b>	23
Collagen Type V -Biotin	Gt	Pab	+			Bv		+	+				Db	200 µg	<b>O20950</b>	23
Collagen Type VI	Rb	Pab						+	+	+				250 µg	<b>P61570</b>	23
Collagen Type VI	Gt	Pab	+			Bv		+	+				Db	200 µg	<b>O14890</b>	23
Collagen Type VI	Rb	Pab	+					+	+	+				500 µg	<b>O20020</b>	23
Collagen Type VI -Biotin	Gt	Pab	+			Bv		+	+				Db	200 µg	<b>O20960</b>	23
Collagen Type VII	Ms IgG1	LH7.2	+					+						200 µg	<b>N96540</b>	23
Collagen Type VII	Ms IgG1	LH7.2	+			+		+					EM,IF	<b>500 µl</b>	<b>N68270</b>	23
Collagen Type IX	Rb	Pab				Ck				+			IF	500 µl	<b>O18740</b>	23
Collagen Type IX	Ms IgG1	2C2	-	-		Ck,QI		+					EM,IF	<b>500 µl</b>	<b>N68210</b>	23
Collagen Type IX	Ms IgG1	4D6	-	-		Ck,QI		+					EM,IF	<b>500 µl</b>	<b>N68230</b>	23
Collagen Type X	Ms IgG1	X-AC9				Ck		+					IF	<b>500 µl</b>	<b>N68290</b>	23
Complement C1	Sh	Pab	+										IEP,DD	1 ml	<b>820940</b>	4
Complement C1Q	Rb	Pab	+							+				1 ml	<b>P48850</b>	4
Complement C1q	Sh	Pab	+										RID,DD	1 ml	<b>N89690</b>	4
Complement C1q -FITC	Sh	Pab	+						+					1 ml	<b>N90810</b>	4
Complement C1q protein	Gt	Pab	+					+		+				100 µl	<b>B63740</b>	4
Complement C1r	Sh	Pab	+										IEP	1 ml	<b>N89700</b>	4
Complement C3	Gt	Pab				Dg							IEP,DD	2 ml	<b>909090</b>	4
Complement C3	Gt	Pab				Dg		+		+				1 mg	<b>864060</b>	4
Complement C3	Gt	Pab			+								IEP,DD	2 ml	<b>966150</b>	4
Complement C3	Gt	Pab	+											1 ml	<b>P48860</b>	4
Complement C3	Gt	Pab	+										Neph	10 ml	<b>O23780</b>	4
Complement C3	Gt	Pab	+										TIA	10 ml	<b>S36510</b>	4
Complement C3 -FITC	Gt	Pab				GP							IF	1 ml	<b>N89710</b>	4
Complement C3 -FITC	Gt	Pab				Dg		+						1 mg	<b>367920</b>	4
Complement C3 -HRP	Gt	Pab				Dg		+		+				1 mg	<b>Q00270</b>	4
Complement C3a	Ms IgG2b	H13	+					+						50 µg	<b>O19510</b>	4
Complement C3b	Ms IgG1	H11	+					+	+					50 µg	<b>O19520</b>	4
Complement C3c	Sh	Pab	+	+	+	Rb,GP+							RID,DD+	1 ml	<b>O25950</b>	4
Complement C3c -FITC	Sh	Pab	+					+					IEP	1 ml	<b>O26460</b>	4
Complement C3d	Sh	Pab	+										RID,DD+	1 ml	<b>N97970</b>	4
Complement C4	Gt	Pab	+											1 ml	<b>P48870</b>	4
Complement C4	Sh	Pab	+	+	+	GP,Sw+		+					RID,DD+	1 ml	<b>O25960</b>	4
Complement C4	Gt	Pab	+										Neph	10 ml	<b>O23790</b>	4
Complement C4	Gt	Pab	+										Neph	10 ml	<b>GG0350</b>	4
Complement C4	Gt	Pab	+										TIA	10 ml	<b>S36520</b>	4
Complement C4 -FITC	Sh	Pab	+					+	+	+			IF	1 ml	<b>O25970</b>	4
Complement C5	Sh	Pab	+										RID,DD+	1 ml	<b>N89750</b>	4
Complement C5a Receptor 1	Rb	Pab	+					+						50 µl	<b>FT3780</b>	22

**Species legend** : Bd : Bird, Bv : Bovine, Ck : Chicken or Hen, Ct : Feline, Dg : Canine, Dr : Drosophila, Eq : Equine, F : Fish, Fr : Frog, Ft : Ferret, GP : Guinea Pig, Gt : Goat, Hm : Hamster, Hrs : Horse, Hu : Human, Ko : Kangaroo, M : Mammalian, Mi : Mink, Mk : Monkey, Ms : Mouse, Ne : Nematode, Op : Opossum, Pl : plant, Ql : Quail, Rb : Rabbit, Rt : Rat, Sh : Sheep, Sw : Porcine, Sy Hm : Syrian Hamster, Xe : Xenopus, Ye : Yeast

**Size** : Size indicated in bold means several sizes and formats are available (sample size or bigger size, unpurified neat serum, without azide or BSA, positive control...) : contact us for more detail

**Application legend** : Bk : Blocking, CD : Cell detection, Ch : ChIP, COA : ELISA capture, Db : Dot Blot, DD : Double diffusion, EL : ELISA detection, EM : Electron Microscopy, FCM : Flow Cytometry, FIA : FluoroImmunoAssay, GS : Gel (super)shift, HA : Hemagglutination/Latex agglutination, ICC : ImmunoCytoChemistry, IEP : Immunoelectrophoresis, IF : Immunofluorescence, IHC : ImmunoHistoChemistry, IP : Immunoprecipitation/Immunopurification, ISH : In Situ Hybridization, KA : Kinase assay, LF : Lateral flow, Neph : Nephelometry, Neut : Neutralizing, RIA : RadioImmunoassay, RID : Radial Immunodiffusion, SB : Southern Blot, TIA : Turbidimetry

**Name** : Prefixes as 'alpha', 'D1-', 'Pro-',... are not considered for the alphanumerical sorting, and often included after the main name.

(+) : Expected species cross-reactivities based on immunogen sequence homology \_ Expected application suitability.

# Primary Antibodies & Ags

## Alphabetical Listing

Name	Host - Isotype	Clone	Species				Reactivity				Application						Size	Cat.#	Research Area
			Hu	Ms	Rt	Other	WB	IHC	EL	FC	IP	Other							
Complement C5b	Ms IgG1	HC5b.1	+							+	+	+					50 µg	O19530	4
Complement C6	Sh	Pab	+														RID,DD+ 1 ml	N89760	4
Complement C7	Sh	Pab	+							+	+						1 ml	N90790	4
Complement C8	Sh	Pab	+				Bv,Gt										RID,DD+ 1 ml	N89770	4
Complement C9	Sh	Pab	+														RID,DD+ 1 ml	N89780	4
Connexin 26	Rb	Pab	(+)	+	+	(Sh)				+	+	+					100 µg	H37100	8-17
Connexin 30.3	Rb	Pab		+	+					+	+						100 µg	I75120	8-17
Connexin 31	Rb	Pab		+						+	+	+					100 µg	H53210	8-17
Connexin 31.1	Rb	Pab		+	+					+	+	+					100 µg	H46400	8-17
Connexin 32	Rb	Pab	+	+	+					+	+						100 µg	H35600	8-17
Connexin 32	Rb	Pab	(+)	+	(+)					+	+						100 µg	H49530	8-17
Connexin 32	Ms IgG1	Mab	+	+	+					+	+						100 µg	C88620	8-17
Connexin 33	Rb	Pab					+			+	+						100 µg	928840	8-17
Connexin 37	Rb	Pab	(+)	+	(+)					+	+						100 µg	D33180	8-17
Connexin 37	Rb	Pab					+			+	+						100 µg	H39030	8-17
Connexin 40	Rb	Pab		+	+					+	+						100 µg	GS9290	8-17
Connexin 40	Rb	Pab	(+)	+	(+)					+	+						100 µg	Q95950	8-17
Connexin 43	Rb	Pab	(+)	+	+	Bv,(Ck)				+	+						100 µg	H55660	8-17
Connexin 43	Rb	Pab	(+)	+	(+)	(Sh,Ck)				+	+						100 µg	H62720	8-17
Connexin 43	Ms IgG1	Mab	+	+	+	Bv,Hm				+	+						100 µg	C93740	8-17
Connexin 43	Rb	Pab	+	+	+					+							500 µl	829892	8-17
Connexin 45	Rb	Pab	+	+		Dg,Ck				+	+						100 µg	F82680	8-17
Connexin 45	Rb	Pab	+	(+)		Dg				+	+						100 µg	H56470	8-17
Connexin 46	Rb	Pab			+					+	+						100 µg	H14050	8-17
Connexin 50	Rb	Pab		+	+					+	+						100 µg	H04510	8-17
Copper Transporter Receptor 1	Rb	Pab	+							-	+						100 µl	BC4120	5
Core-Binding Factor alpha	Rb	Pab	+	+	+					+	+						100 µg	T93120	10
Core-Binding Factor alpha 1	Rb	Pab	+	+	+	(Ck)				+	+						100 µl	GS9300	10
Core-Binding Factor alpha 2	Rb	Pab	+							+	+						100 µl	GS9310	10
Core-Binding Factor alpha 3	Rb	Pab	+	(+)	(+)					+	+						100 µl	GS9320	10
CoREST	Rb	Pab	+	(+)						+							100 µl	GP7280	
CoREST	Rb	Pab	+							+							100 µg	GR5830	10
Coronavirus	Ms IgG1	5A4				Bv				+			HA				1 mg	GG1130	15
Corticosterone-3	Rb	Pab									+						1,000 tb	P49190	14-20
Corticotropin Releasing factor	Ms IgG1	4H9	+		+												100 µg	585430	14
Corticotropin Releasing factor	Ms IgG1	5D5	+								+						1 mg	N96830	14
Corticotropin Releasing factor	Ms IgG1	4H9	+								+						1 mg	N96820	14
Cortisol	Gt	Pab															1 ml	U71800	14
Cortisol	Ms IgG2b	9301									+			RIA			1 mg	O01530	14
Cortisol	Ms IgG	BD1410															1 mg	T83750	14
Cortisol	Ms IgG2a	XM210									+						1 mg	AL7960	14
Cortisol	Ms IgG3	CORT-2									+						1 mg	BA2570	14
Cortisol	Ms IgG1	CORT-1									+						1 mg	BA2580	14
Cortisol Binding Globulin	Rb	Pab	+								+						1000 tests	P49200	14
Cortisol-3	Ms IgG2b	M94144															1 mg	P43600	14
Cortisol-3	Rb	Pab											RIA,COA				1 ml	P49210	14
COT, C-term	Rb	Pab	+							+	+	+					100 µg	GL6110	21
Cotinine	Rb	Pab															1 mg	P49221	11
Cotinine	Rb	Pab															1 mg	P49222	11
Cotinine	Ms IgG	BD1445									+			IEP			1 mg	R73340	11
COUP-TFII, nuclear receptor	Rb	Pab	+	+	+					+							50 µl	GG4880	10
C-Peptide	Ms IgG1	M607239															1 mg	P43270	14
C-Peptide	GP	Pab	+														1,000 tb	P48820	14
C-Peptide	Rb	Pab	+														1 mg	U72790	14
C-peptide	Rb	Pab	+											RIA			20 µl	U63630	14

Immunologicals

A.74

interchim

### Research Area Code

- |   |  |   |   |  |
|---|--|---|---|--|
| 1 Allergens                             | 6 Cardiac Markers and related molecules  | 11 Drugs and resistance                             | 16 Lipides/Apolipo/Lipoproteins             | 20 Neuroscience                        |
| 2 Anglo/Histogenesis                    | 7 CD Markers                             | 12 Enzymes & enzymes inhibitors                     | 17 Membrane channels and transport proteins | 21 Post translational modifications    |
| 3 Apoptosis/cell cycle                  | 8 Cell adhesion                          | 13 Hematopoietic markers                            | 18 Metabolism/Energy pathways               | 22 Signal transduction/Stress response |
| 4 Blood and serum proteins              | 9 Cytokine/Chemokine/Growth factors      | 14 Hormones/Steroids                                | 19 Miscellaneous                            | 23 Structural proteins                 |
| 5 Cancer, Hypoxia and related molecules | 10 DNA Replication/Transcription/Repairs | 15 Infectious agents related molecules & resistance |   | 24 Tags and Markers                    |

# Primary Antibodies & Ags

## Alphabetical Listing

Name	Host - Isotype	Clone	Species Reactivity				Application						Size	Cat.#	Research Area		
			Hu	Ms	Rt	Other	WB	IHC	EL	FC	IP	Other					
C-peptide (Proinsulin)	Ms IgG1	C-PEP-01	+									+		RIA	1 mg	O08870	14
C-peptide (Proinsulin)	Ms IgG1	4H8	+											RIA	1 mg	S34430	14
C-Peptide-KLH	Gt	Pab	+						+	+					1 ml	P48830	14
CPT1A, C-term	Rb	Pab	+												100 µg	GK9590	21
CPT1A, N-term	Rb	Pab	+												100 µg	GK9580	21
CPT1B, C-term	Rb	Pab	+							+	+				100 µg	GK9620	21
CPT1B, N-term	Rb	Pab	+								+	+			100 µg	GK9770	21
CPT2, C-term	Rb	Pab	+												100 µg	GK9610	21
CPT2, N-term	Rb	Pab	+												100 µg	GK9600	21
C-Reactive Protein	Gt	Pab	+	(+)	(+)				+	+					100 µg	GS9340	6
C-Reactive Protein	Ms IgG1	Mab	+						+	+					100 µg	GS9350	6
C-Reactive Protein	Rb	Pab				+			+	+					100 µg	GS9360	6
C-Reactive Protein	Gt	Pab	(+)	(+)	+				+	+					100 µg	GS9370	6
C-Reactive Protein	Gt	Pab	(+)	(+)		Dg			+	+					100 µg	GS9380	6
C-Reactive Protein	Ck	Pab					Rb		+	+					100 µg	GS9390	6
C-Reactive Protein	Gt	Pab			+				+	+					100 µg	GS9400	6
C-Reactive Protein	Rb	Pab			+				+	+					100 µg	GS9410	6
C-Reactive Protein	Ms IgG2a	Mab	+	+					+	+					100 µg	GS9420	6
C-Reactive Protein	Ms	Mab	+			Pg			+	+					100 µg	GS9330	6
C-Reactive Protein	Gt	Pab	+						+	+					1 mg	Q02100	6
C-Reactive Protein	Gt	Pab	+									IEP,DD		2 ml	Q02090	6	
C-Reactive Protein	Gt	Pab				Dg						IEP,DD		1 ml	S36720	6	
C-Reactive Protein	Gt	Pab				Dg			+	+				100 µg	S36910	6	
C-Reactive Protein	Ms IgG2a	M701288	+											1 mg	P43280	6	
C-Reactive Protein	Gt	Pab	+											5 ml	P48840	4	
C-Reactive Protein	Gt	Pab	+											2 mg	P61470	4	
C-Reactive Protein	Ms IgG2a	9502	+											1 mg	N92550	6	
C-Reactive Protein	Ms IgG2a	9501	+											1 mg	N92540	6	
C-Reactive Protein	Gt	Pab	+									IEP		10 ml	GG0300	6	
C-Reactive Protein	Gt	Pab	+									Neph		10 ml	O23770	6	
C-Reactive Protein	Gt	Pab	+									TIA		10 ml	N87470	6	
C-Reactive Protein	Gt	Pab	+											10 ml	L66040	6	
C-Reactive Protein	Ms IgG1	40/228	+											1 mg	GG1380	6	
C-Reactive Protein	Ms IgG1	C3	+											1 mg	O01400	6	
C-Reactive Protein	Ms IgG1	C4							+	+				1 mg	O01410	6	
C-Reactive Protein	Ms IgG2a	C5	+											1 mg	O01430	6	
C-Reactive Protein	Ms IgG1	C7	+											1 mg	O01440	6	
C-Reactive Protein	Ms IgG2a	C6	+											1 mg	O01450	6	
C-Reactive Protein	Ms IgG2b	C1	+							+				1 mg	O01460	6	
C-Reactive Protein	Ms IgG1	C2	+											1 mg	O01470	6	
C-Reactive Protein -Biotin	Ms IgG2a	C6	+											1 mg	AL8140	6	
C-Reactive Protein -FITC	Gt	Pab	+									+		1 mg	S36800	6	
C-Reactive Protein -HRP	Gt	Pab	+	(+)	(+)				+	+				100 µg	GS9430	6	
C-Reactive Protein -HRP	Gt	Pab	+	(+)	(+)				+	+				100 µg	GS9440	6	
C-Reactive Protein -HRP	Rb	Pab				+			+	+				100 µg	GS9450	6	
C-Reactive Protein -HRP	Gt	Pab	(+)	(+)	+				+	+				100 µg	GS9460	6	
C-Reactive Protein -HRP	Gt	Pab					Dg		+	+				100 µg	GS9470	6	
C-Reactive Protein -HRP	Ck	Pab					Rb		+	+				100 µg	GS9480	6	
C-Reactive Protein -HRP	Gt	Pab	+						+	+				1 mg	S36880	6	
CR1, see CD 35																	
Crab, allergenic protein	Rb	Pab											+	<b>1 mg</b>	BI8610	1	
Creatine Kinase, BB Isoenzyme	Ms IgG1	M52212	+											1 mg	P43610	6-12	
Creatine Kinase, BB Isoenzyme	Gt	Pab	+											1 ml	P49240	6-12	
Creatine Kinase, BB Isoenzyme	Rb	Pab	+									+		1 ml	P49230	6-12	
Creatine Kinase, BB Isoenzyme	Rb	Pab	+						+	+			+	1 mg	P61580	6-12	

**Species legend** : Bd : Bird, Bv : Bovine, Ck : Chicken or Hen, Ct : Feline, Dg : Canine, Dr : Drosophila, Eq : Equine, F : Fish, Fr : Frog, Ft : Ferret, GP : Guinea Pig, Gt : Goat, Hm : Hamster, Hrs : Horse, Hu : Human, Ko : Kangaroo, M : Mammalian, Mi : Mink, Mk : Monkey, Ms : Mouse, Ne : Nematode, Op : Opossum, Pl : plant, Ql : Quail, Rb : Rabbit, Rt : Rat, Sh : Sheep, Sw : Porcine, Sy Hm : Syrian Hamster, Xe : Xenopus, Ye : Yeast

**Size** : Size indicated in bold means several sizes and formats are available (sample size or bigger size, unpurified neat serum, without azide or BSA, positive control...) : contact us for more detail

**Application legend** : Bk : Blocking, CD : Cell detection, Ch : ChIP, COA : ELISA capture, Db : Dot Blot, DD : Double diffusion, EL : ELISA detection, EM : Electron Microscopy, FCM : Flow Cytometry, FIA : FluoroImmunoAssay, GS : Gel (super)shift, HA : Hemagglutination/Latex agglutination, ICC : ImmunoCytoChemistry, IEP : Immunoelectrophoresis, IF : Immunofluorescence, IHC : ImmunoHistoChemistry, IP : Immunoprecipitation/Immunopurification, ISH : In Situ Hybridization, KA : Kinase assay, LF : Lateral flow, Neph : Nephelometry, Neut : Neutralizing, RIA : RadioImmunoassay, RID : Radial Immunodiffusion, SB : Southern Blot, TIA : Turbidimetry

**Name** : Prefixes as 'alpha', 'D1-', 'Pro-',... are not considered for the alphanumerical sorting, and often included after the main name.

(+) : Expected species cross-reactivities based on immunogen sequence homology \_ Expected application suitability.

# Primary Antibodies & Ags

## Alphabetical Listing

Name	Host - Isotype	Clone	Species Reactivity				Application						Size	Cat.#	Research Area
			Hu	Ms	Rt	Other	WB	IHC	ICC	EL	FC	IP			
Creatine Kinase, MB Isoenzyme	Ms IgG1	BDI937	+									+	1 mg	O21480	6-12
Creatine Kinase, MB Isoenzyme	Ms IgG	CK-7G2	+									+	1 mg	Q23350	6-12
Creatine Kinase, MB Isoenzyme	Ms IgG	CK-10	+									+	1 mg	Q22750	6-12
Creatine Kinase, MB Isoenzyme	Ms IgG1	M9910207	+									+	1 mg	P43620	6-12
Creatine Kinase, MM Isoenzyme	Gt	Pab	+									+	1 ml	O26470	6-12
Creatine Kinase, MM Isoenzyme	Gt	Pab	+									+	1 mg	474421	6-12
Creatine Kinase, MM Isoenzyme	Gt	Pab	+									+	500 µg	474420	6-12
Creatine Kinase, MM Isoenzyme	Ms IgG2b	M52211	+										1 mg	P43630	6-12
Creatine Kinase, MM Isoenzyme	Gt	Pab	+									+	1 ml	921630	6-12
Creatine Kinase, MM Isoenzyme	Gt	Pab	+										1 mg	P61590	6-12
Creatine Kinase, MM Isoenzyme	Rb	Pab	+									+	1 ml	P49260	6-12
Creatine Transporter	Rb	Pab	+		(+)	(Rb,Bv)						+	100 µg	E98050	17
Creatinine Phosphokinase	Rb	Pab	+									+	1 ml	GG3980	6
Creatinine Phosphokinase, BB dimer	Ms IgG1	a2	+									+	200 µg	GG1370	6
CREB	Ms IgG1	82B514	+									+	100 µg	GS2110	10-22
CREB	Rb	Pab	+	+	+							+	500 µl	V13580	10-22
CREB, phospho (ser 121)	Rb	Pab	+	+								+	100 µl	GP7660	10-22
CREB-1	Rb	Pab	+		+							+	100 µl	GS1950	10-22
CREB-1, <i>Nushift</i>	Rb	Pab	+		+							GS	17 Rxns	GS0940	10-22
CREB-1, p43	Rb	Pab	+									+	100 µl	P49270	10-22
CREB-1, p43	Rb	Pab	+									+	100 µl	S35840	10-22
CREB-Binding Protein	Ms	Mab	+									+	100 µg	GS9490	10-22
CREB-Binding Protein	Rb	Pab	+									+	100 µl	Q61602	10-22
CREB-Binding Protein	Ms	AC238	+		+							+	500 µl	N68310	10-22
CREB-Binding Protein	Rb	Pab	+									+	100 µl	Q61601	10-22
CREB-Binding Protein	Rb	Pab	+									+	100 µg	GR4000	22-10
CREB-Binding Protein	Rb	Pab	+									+	100 µg	GR4730	22-10
C-Rel, <i>Nushift</i>	Rb	Pab	+									GS	100 µg	GS1900	22
CRHR2	Rb	Pab	+									+	50 µl	FT3480	20-22-14
CRHR2	Rb	Pab	+									+	50 µl	FT3490	20-22-14
CRHR2	Rb	Pab	+									+	50 µl	FT4460	20-22-14
CRHR2	Rb	Pab	+									+	50 µl	FT4900	20-22-14
CRK7	Rb	Pab	+									+	50 µl	FT6030	21-12
CRK7, C-term	Rb	Pab	+									+	100 µg	GL3680	21-12
CRK7, N-term	Rb	Pab	+	+								+	100 µg	GL3670	21-12
CROC1A, C-term	Rb	Pab	+									+	100 µg	GK8010	21-18
CROC1A, N-term	Rb	Pab	+									+	100 µg	GK8000	21-18
CRTR-1	Rb	Pab	+									+	100 µg	AW6510	10
Cryptochrome	Rb	Pab				Dr						+	100 µg	I77180	10
Cryptochrome 1	Rb	Pab	(+)	+		(Mk)						+	100 µg	H61090	10
Cryptochrome 1, C-term	Rb	Pab	+									+	100 µg	GL0410	10
Cryptochrome 2	Rb	Pab		+								+	100 µg	I89160	10
Cryptochrome 2, C-term	Rb	Pab	+									+	100 µg	GL0420	10
Cryptococcus neoformans	Ms IgG2b	CSFi										+	500 µl	N68350	15
Cryptosporidium parvum	Ms IgG3	M99081023	+			+						+	100 µg	P43640	15
Cryptosporidium parvum	Gt	Pab										+	1 ml	GG0310	15
Cryptosporidium parvum	Ms IgG1	BDI370										+	100 µg	GG1390	15
Cryptosporidium parvum	Ms IgG3	107										+	100 µg	N94890	15
Cryptosporidium parvum, 15kDa	Ms IgG2b	2B3											500 µl	495130	15
Cryptosporidium parvum, 50kDa	Ms IgM	2D7											500 µl	495050	15
CSF-1R, see CD115															
CSF1R, C-term	Rb	Pab	+									+	100 µg	GL3970	21
CSF1R, N-term	Rb	Pab	+									+	100 µg	GL3960	21
CSK Binding Protein	Ms IgG2b	PAG-C1	+	+	+	Bv						+	100 µg	GG1400	21
CSK, C-term	Rb	Pab	+									+	100 µg	GL4940	21

### Research Area Code

- |   |  |   |   |  |
|---|--|---|---|--|
| 1 Allergens                             | 6 Cardiac Markers and related molecules  | 11 Drugs and resistance                             | 16 Lipides/Apolipo/Lipoproteins             | 20 Neuroscience                        |
| 2 Angio/Histogenesis                    | 7 CD Markers                             | 12 Enzymes & enzymes inhibitors                     | 17 Membrane channels and transport proteins | 21 Post translational modifications    |
| 3 Apoptosis/cell cycle                  | 8 Cell adhesion                          | 13 Hematopoietic markers                            | 18 Metabolism/Energy pathways               | 22 Signal transduction/Stress response |
| 4 Blood and serum proteins              | 9 Cytokine/Chemokine/Growth factors      | 14 Hormones/Steroids                                | 19 Miscellaneous                            | 23 Structural proteins                 |
| 5 Cancer, Hypoxia and related molecules | 10 DNA Replication/Transcription/Repairs | 15 Infectious agents related molecules & resistance |   | 24 Tags and Markers                    |

# Primary Antibodies & Ags

## Alphabetical Listing

Name	Host - Isotype	Clone	Species Reactivity				Application						Size	Cat.#	Research Area	
			Hu	Ms	Rt	Other	WB	IHC	ICC	EL	FC	IP				Other
CSN1	Rb	Pab	+					+						100 µg	GR3590	22-10
CSN1	Rb	Pab	+					+						100 µl	AZ5980	22-10
CSN2	Rb	Pab	+					+						100 µl	AZ5990	22-10
CSN2	Rb	Pab	+					+						100 µl	AZ5991	22-10
CSN2	Rb	Pab	+					+						100 µg	GR6000	22-10
CSN2	Rb	Pab	+					+						100 µg	GR6040	22-10
CSN3	Rb	Pab	+					+						100 µl	AZ6000	22-10
CSN3	Rb	Pab	+					+						100 µg	GR5860	22-10
CSN3	Rb	Pab	+					+						100 µg	GR4330	22-10
CSN4	Rb	Pab	+					+						100 µg	BB0820	22-10
CSN5	Rb	Pab	+					+						100 µg	GR4400	22-10
CSN7b	Rb	Pab	+					+						100 µg	GR3390	22-10
CSN7b	Rb	Pab	+					+						100 µg	GR4530	22-10
CSN7b	Rb	Pab	+	(+)				+						100 µl	GP7570	22-10
CSNK2A1, middle region	Rb	Pab	+	+				+	+	+				100 µg	GL8210	21
CSNK2A2, C-term	Rb	Pab	+	+			Hm	+	+	+				100 µg	GL7950	21
C-Src	Rb	Pab	+	+	+			-					+	500 µl	Q19150	5
C-Src	Rb	Pab	+				Fr	-					+	500 µl	S44330	5
CTLA-4, see CD152																
CTLA-4	Rb	Pab		+				+	+				Neut	50 µg	AR5740	9
CTLA-4 -Biotin	Rb	Pab		+				+	+					25 µg	AR3790	9
Cu2+ oxidized LDL	Rb	Pab	+					+	+					20 µl	U63710	9
CUG-BP1	Ms IgG1	Mab	+	+	+		Sw,Bv+	+					IF	100 µl	AW5630	16-17
CUGBP1 protein	Ms	Mab	+	+	+			+	+					100 µg	GS9500	10
CUGBP2/ NAPOR	Rb	Pab	+	+	+			+	+					100 µg	GS9510	10
Cullin-1	Rb	Pab	+	+				+	+			+		500 µl	806721	3
Cullin-1	Rb	Pab	+	+				+	+			+		500 µl	S43260	3
Cullin-2	Rb	Pab	+	+				+	+					500 µl	N68420	3
Cullin-2	Rb	Pab	+	+				+	+			+		500 µl	S43190	3
Cullin-3	Rb	Pab	+	+				+				+		500 µl	S46160	3
Cullin-7	Rb	Pab	+					+				+		100 µg	GR5460	10
Cullin-7	Rb	Pab	+									+		100 µg	GR5630	10
cvHSP (aa. 150-166)	Rb	Pab	+					+	+					200 µg	GG3990	22
cvHSP (aa. 52-77)	Rb	Pab	+					+	+					200 µg	GG4000	22
CX3CR1, extracellular loop V28	Rb	Pab	+					+						100 µg	AL9020	9
CX3CR1, N-term. V28	Rb	Pab	+					+			+			100 µg	AL9030	9
CXC Chemokine Receptor 3	Rb	Pab	+					+						50 µl	FS9620	22-9
CXC Chemokine Receptor 4	Rb	Pab	+	+	+			+						50 µl	FS9630	22-9
CXC Chemokine Receptor 4	Rb	Pab	+	+	+			+						50 µl	FS9650	22-9
CXC Chemokine Receptor 5	Rb	Pab	+	+				+						50 µl	FS9670	22-9
CXC Chemokine Receptor 5	Rb	Pab	+	+				+						50 µl	FS9660	22-9
CXCL16	Rb	Pab	+					+	+				Neut	50 µg	AR4520	9
CXCL16	Gt	Pab		+				+	+				Neut	50 µg	AR5750	9
CXCL16 -Biotin	Rb	Pab	+					+	+					25 µg	AR2630	9
CXCL16 -Biotin	Gt	Pab		+				+	+					25 µg	AR3800	9
CXCR4 / Fusin	Ms IgG1	B-T17	+							+				200 µg	O08230	9
CXCR4 / Fusin	Ms IgG2a	12G5	+				Mk			+			Bk	500 µl	S38370	3
CXCR4 / Fusin	Rb	Pab	+	+			Mk	+		+				500 µl	S47390	3
CXCR4, extracellular loop	Rb	Pab	+					+						100 µg	AL9070	9
CXCR4, N-term	Rb	Pab	+					+	+			+		100 µg	AL9080	9
Cyclic AMP	Rb	Pab								+				1,000 tb	P49290	20-22
Cyclic AMP	Rb	Pab	+										RIA	20 µl	GG3860	3-22
Cyclic AMP	Sh	Pab	+							+		+	RIA	200 µl	O17570	3-22
Cyclic GMP	Sh	Pab						+						2 ml	AK2590	10
Cyclic GMP	Rb	Pab						+	+					1,000 tb	P49300	20-22

**Species legend** : Bd : Bird, Bv : Bovine, Ck : Chicken or Hen, Ct : Feline, Dg : Canine, Dr : Drosophila, Eq : Equine, F : Fish, Fr : Frog, Ft : Ferret, GP : Guinea Pig, Gt : Goat, Hm : Hamster, Hrs : Horse, Hu : Human, Ko : Kangaroo, M : Mammalian, Mi : Mink, Mk : Monkey, Ms : Mouse, Ne : Nematode, Op : Opossum, Pl : plant, Ql : Quail, Rb : Rabbit, Rt : Rat, Sh : Sheep, Sw : Porcine, Sy Hm : Syrian Hamster, Xe : Xenopus, Ye : Yeast

**Size** : Size indicated in bold means several sizes and formats are available (sample size or bigger size, unpurified neat serum, without azide or BSA, positive control...) : contact us for more detail

**Application legend** : Bk : Blocking, CD : Cell detection, Ch : ChIP, COA : ELISA capture, Db : Dot Blot, DD : Double diffusion, EL : ELISA detection, EM : Electron Microscopy, FCM : Flow Cytometry, FIA : FluoroImmunoAssay, GS : Gel (super)shift, HA : Hemagglutination/Latex agglutination, ICC : ImmunoCytoChemistry, IEP : Immunoelectrophoresis, IF : Immunofluorescence, IHC : ImmunoHistoChemistry, IP : Immunoprecipitation/Immunopurification, ISH : In Situ Hybridization, KA : Kinase assay, LF : Lateral flow, Neph : Nephelometry, Neut : Neutralizing, RIA : RadioImmunoassay, RID : Radial Immunodiffusion, SB : Southern Blot, TIA : Turbidimetry

**Name** : Prefixes as 'alpha', 'D1-', 'Pro-',... are not considered for the alphanumerical sorting, and often included after the main name.

(+) : Expected species cross-reactivities based on immunogen sequence homology \_ Expected application suitability.

# Primary Antibodies & Ags

## Alphabetical Listing

Name	Host - Isotype	Clone	Species Reactivity				Application						Size	Cat.#	Research Area	
			Hu	Ms	Rt	Other	WB	IHC	ICC	EL	FC	IP				Other
Cyclic GMP	Rb	Pab	+										20 µl	GG3890	3-22	
Cyclic GMP	Sh	Pab	+							+		+	RIA	200 µl	O17580	3-22
Cyclic Nucleotide Channel 1	Rb	Pab	(+)	(+)	+	(+)	+	+					100 µg	I83270	17	
Cyclic Nucleotide Gated Channel 1	Rb	Pab	+							Sw,(Bv)	+	+		100 µg	I80840	17
Cyclic Nucleotide Gated Channel 2	Rb	Pab	+							(Bv)	+	+		100 µg	I85680	17
Cyclic Nucleotide Gated Channel 2	Rb	Pab	+							(+)	+	(Rb)	+	100 µg	I85760	17
Cyclic Nucleotide Gated Channel 3	Rb	Pab	+								+	(Ck,Bv)	+	100 µg	I80780	17
Cyclic Nucleotide Gated Channel 3	Rb	Pab	+							(+)	+		+	100 µg	I87370	17
Cyclic Nucleotide Gated Channel 4	Rb	Pab	+								+		+	100 µg	E19110	17
Cyclin A	Rb	Pab	+	+	+		+	+					100 µl	U71830	3-22	
Cyclin A	Rb	Pab	+	+	+		+				+		500 µl	N68520	3-22	
Cyclin A	Ms IgG1	C160	+				+	+					100 µl	GS2100	3-22	
Cyclin A	Rb	Pab	+				+	+					100 µl	O02060	3-22	
Cyclin A	Ms IgG1	CYA06	+				+	+				+	500 µl	N68560	3-22	
Cyclin A	Ms IgG2a	E23	+	+	+	Bv					+		500 µl	954971	3-22	
Cyclin A	Ms IgG1	E72	+	+	+	Bv,Mi						KA	500 µl	N68470	3-22	
Cyclin A	Ms IgE	BF683	+	-	-						+	+	KA,GS	500 µl	N68490	3-22
Cyclin A	Rb	Pab	+	+	+		+	+				+	500 µl	S45480	3-22	
Cyclin A, <i>Nushift</i>	Ms IgG1	C160	+										GS	17 Rxns	GS0950	3-22
Cyclin B1	Rb	Pab	+	+	+		+	+					100 µl	P49310	3-22	
Cyclin B1	Rb	Pab	+	+	+		+						500 µl	N68625	3-22	
Cyclin B1	Ms IgG1	GNS1	+				+	+					100 µl	GS1830	3-22	
Cyclin B1	Rb	Pab	+				+	+					100 µl	O02070	3-22	
Cyclin B1	Ms IgG1	V152	+	+	+	Hm	+	+		+	-		500 µl	881171	3-22	
Cyclin B1	Ms IgG1	GNS1	+	+		Hm	+			+	+	IF	500 µl	N68650	3-22	
Cyclin B1	Ms IgG2a	GNS11	+	+	+	Hm	+				+	IF	500 µl	N68670	3-22	
Cyclin B1	Rb	Pab	+	+	+		+	+			+		500 µl	N68620	3-22	
Cyclin C	Rb	Pab	+	+	+	Dg	+				+	IF,KA	500 µl	N68710	3-22	
Cyclin cdc2, p34	Rb	Pab	+				+	+	+				100 µl	O02080	3-22	
Cyclin cdk2	Rb	Pab	+				+	+	+				100 µl	O02090	3-22	
Cyclin cdk4, p34	Rb	Pab	+				+	+					100 µl	O02100	3-22	
Cyclin cdk5, p31	Rb	Pab	+				+	+					100 µl	O02110	3-22	
Cyclin D1	Rb	Pab	+	+	+		+	+					100 µl	U71840	3-22	
Cyclin D1	Ms IgG2a	DCS-6	+				+	+			+	+	50 µg	362300	3-22	
Cyclin D1	Rb	Pab	+				+	+					100 µl	O02120	3-22	
Cyclin D1 / bcl-1	Ms IgG2a	P2D11F11	+				+						500 µl	V04320	3-22	
Cyclin D1 / bcl-1	Ms IgG2a	DCS-6	+	+	+	Dg,Mk	+	-		+	+	IF,Bk	500 µl	290060	3-22	
Cyclin D1 / bcl-1	Ms IgG2a	DCS-11	+	+	+							KA	500 µl	205111	3-22	
Cyclin D1 / bcl-1	Rb	Pab	+	+	+		+			+		IF,KA	500 µl	775421	3-22	
Cyclin D1 / bcl-1	Rb	Pab	+	+	+		+	+			+	IF	500 µl	Q19580	3-22	
Cyclin D1 / bcl-1	Rb	Pab	+	+	+		+	+			+		500 µl	Q19574	3-22	
Cyclin D1 / bcl-1	Rb IgG	SP4	+	+	+		+	+					500 µl	V17000	3-22	
Cyclin D2	Ms IgG2a	DCS-3.1	+				+	+			+	IF	5 ml	GG1410	3-22	

A.78

### Cyclin D1 / bcl-1 / PRAD-1

- ◆ Specificity : Cyclin D1 / bcl-1 / PRAD-1
- ◆ Catalog number : **V17000**
- ◆ Host and isotype : Rabbit MONOCLONAL IgG (see p. A240)
- ◆ Species reactivity : Human, Mouse, Rat
- ◆ Applications and suggested dilution :
  - Immunohistology (formalin/paraffin) 1:100 (10min., RT)
  - can be used in Western blot

**Key References :**

Cheuk W, et al., Consistent Immunostaining for Cyclin D1 can be achieved on a routine basis using a newly available rabbit monoclonal antibody. *Am JSurg Pathol* June 2004 Vol 28 (6) 801-7



Western blot analysis of Cyclin D1 using antibody V17000.



Formalin-fixed, paraffin-embedded human mantle cell lymphoma stained with antibody V17000 using peroxidase-conjugate and DAB. Note nuclear staining of tumor cells.

# Primary Antibodies & Ags

## Alphabetical Listing

Name	Host - Isotype	Clone	Species Reactivity				Application						Size	Cat.#	Research Area		
			Hu	Ms	Rt	Other	WB	IHC	EL	FC	IP	Other					
Cyclin D2	Ms IgG2a	DCS-3.1	+	+	+		+					+	+	Bk,IF	500 µl	N68790	3-22
Cyclin D2	Ms IgG2b	DCS-5.2	+	+	+			+	-			+		IF,KA	500 µl	N68810	3-22
Cyclin D2	Ms IgG2a	cocktail	+	+	+			+	-			+		IF,KA	500 µl	863021	3-22
Cyclin D3	Ms IgG1	DCS-22	+	+	+	Mk		+	+			+	+	IF	500 µl	N68850	3-22
Cyclin D3	Ms IgG1	DCS-28.1	+		+			+					+	KA	500 µl	N68890	3-22
Cyclin D3	Rb	Pab	+	+	+			+					+	IF,KA	500 µl	N68910	3-22
Cyclin E	Rb	Pab	+	+	+			+		+					100 µl	P49320	3-22
Cyclin E	Rb	Pab	+	+				+							500 µl	836185	3-22
Cyclin E	Rb	Pab	+					+		+					100 µl	O02130	3-22
Cyclin E	Ms IgG2a	CYE05	+					+				+			500 µl	N69060	3-22
Cyclin E	Ms IgG1	HE12	+					+	+			+	-	IF	500 µl	N68970	3-22
Cyclin E	Ms IgGeb	HE67	+									+		IF	500 µl	N69010	3-22
Cyclin E	Ms IgG2b	HE172	+	-	-							+		(GS)	500 µl	N69030	3-22
Cyclin E	Rb	Pab	+	+				+				+		IF,KA	500 µl	N68940	3-22
Cyclin E1	Rb	Pab	+					+							100 µg	AW6520	3-22
Cyclin E2	Rb	Pab	+					+						IF	500 µl	N69090	3-22
Cyclin E2	Rb	Pab	+					+							100 µg	AW6530	3-22
Cyclin G	Ms IgG2b	11C8	+						+						500 µl	V08410	3-22
Cyclin T1	Rb	Pab	+					+	+	+					100 µl	O02140	3-22
Cyclooxygenase 1	Rb	Pab	+					+		+					100 µl	GS9520	12-18
Cyclooxygenase 1	Gt	Pab	+					+		+					100 µg	I74280	12-18
Cyclooxygenase 1	Ms IgG1	Mab	+					+		+					100 µg	C98610	12-18
Cyclooxygenase 1	Ms	Mab	+	+	+	Sh		+		+					100 µg	GS9530	12-18
Cyclooxygenase 1	Ms IgG1	M01010923	+							+					1 mg	U68130	5
Cyclooxygenase 2	Rb	Pab	+	+	+			+	+				+		500 µl	I28872	12
Cyclooxygenase 2	Rb	Pab	+	+	+			+		+					100 µg	I28870	12-18
Cyclooxygenase 2	Gt	Pab	+		+			+		+					100 µg	E73910	12-18
Cyclooxygenase 2	Ms IgG1	Mab	+	+				+		+					100 µg	GS9540	12-18
Cyclooxygenase 2	Ms IgG1	M9909232			+					+					100 µg	P43670	19
Cyclooxygenase 3	Rb IgG	SP21	+	+	+			+	+			+			500 µl	GH3182	12
Cyclooxygenase 3	Rb	Pab	+		+	Dg		+		+					100 µg	GS9550	12-18
Cyclooxygenase 3	Rb	Pab	+			Dg		+		+					100 µg	GS9560	12-18
Cyclosporin A	Ms IgG1	M6032524						+		+					1 mg	P43650	19
Cyclosporin A	Ms IgG1	CS22.22													1 mg	O16960	11
Cylicin I	Ms IgM	Cal-144	+					+	+						5 ml	GG0920	23
Cysteinyl Leukotriene Receptor 1	Rb	Pab	+	+				+							50 µl	FS9550	22-20
Cysteinyl Leukotriene Receptor 1	Rb	Pab	+	+	+			+							50 µl	FS9560	22-20
Cysteinyl Leukotriene Receptor 2	Rb	Pab	+					+		+					50 µl	FT3230	22-20
Cytochrome B, duodenal	Rb	Pab		+				+		+					100 µg	I08950	3-17
Cytochrome C	Ms IgG1	6H2.B4	+	+	+			-				+	IF		500 µl	Q20410	3
Cytochrome C	Ms IgG2b	7H8.2C12	+	+	+	Dg,Dr+		+	+			-			500 µl	Q20450	3
Cytochrome C	Ms IgG2a	CTC03	+			Bv,Dg+		-		+	+	+			500 µl	Q20490	3
Cytochrome C	Ms IgG1	CTC04	+			Bv,Dg+		-		+	+	+			500 µl	Q20530	3
Cytochrome C	Sh	Pab	+	+	+	Rb,Dg		+	+	+		+			100 µl	GS9590	3-18
Cytochrome C	Rb	Pab		+	+	Bv		+		+					100 µl	GS9600	3-18
Cytochrome C	Ms IgG1	Mab	+			Hrs		+		+					100 µl	GS9610	3-18
Cytochrome C	Ms	4CYTC21	+	+	+	Bv,Sw		+							100 µg	Q70310	3
Cytochrome P450 (2B1)	Ms IgG	BDI520			+			+		+					10 Blots	GG3150	12
Cytochrome P450 (2B1,2B2)	Ms IgG	BDI002			+			+		+					10 Blots	GG3160	12
Cytochrome P450 (2C11)	Ms IgG	BDI030			+			+		+					10 Blots	GG3170	12
Cytochrome P450 (2E1)	Ms IgG	1.98.1			+			+							10 Blots	GG3180	12
Cytochrome P450 (3A1)	Ms IgG	2.13.1			+			+							10 Blots	GG3190	12
Cytochrome P450, CYP1B1	Rb	Pab	+					+		+					100 µg	GS9570	18
Cytochrome P450, CYP26A1	Rb	Pab	+	+				+		+					100 µg	GS9580	18
Cytochrome P450, CYP26A1	Rb	Pab	+	+				+		+					100 µg	BI7800	18
Cytokeratin	Ms IgG1	KL1	+					+							6 ml	N90470	23
Cytokeratin	Ms IgG1	KL1	+					+							1 ml	O02830	23
Cytokeratin	GP	Pab	+					+	+						100 µl	GG0490	23
Cytokeratin 1-8	Ms IgG1	Ks1-8	+					+				IF			50 µg	O16610	23
Cytokeratin 1,10	Ms IgG1	LH1	+					+	+						200 µg	S34240	23
Cytokeratin 3,12	Ms IgG1	AE5	+					+	+						200 µg	O16040	23
Cytokeratin 4	Ms IgG1	6B10	+					+							500 µl	N74880	23
Cytokeratin 4-6,8,10,13,18	Ms IgG1	C11	+					+							200 µg	O08270	23
Cytokeratin 5	Ms IgG1	XM26	+					+							500 µl	V09830	23

# Primary Antibodies & Ags

## Alphabetical Listing

Name	Host - Isotype	Clone	Species				Reactivity				Application						Size	Cat.#	Research Area	
			Hu	Ms	Rt	Other	WB	IHC	EL	FC	IP	Other	WB	IHC	EL	FC				IP
Cytokeratin 5,6	Ms IgG1	D5/16 B4	+							+								500 µl	V05690	23
Cytokeratin 5,6,18	Ms IgG1	LP34	+		+	Bv				+								500 µl	N74910	23
Cytokeratin 5,8	Ms IgG1	C22	+							+	+							50 µg	GG1460	23
Cytokeratin 5,8	Ms IgG1	RCK102	+							+	+					IF		1 ml	O16980	23
Cytokeratin 5,8	Ms IgG1	C50	+							+	+							100 µg	AL8780	23
Cytokeratin 5,8	Ms IgG1	C-50	+							+						IF		500 µl	N74930	23
Cytokeratin 6	Ms IgG2a	LHK6B	+	+						+								500 µl	N74970	23
Cytokeratin 7	Ms IgM	LdS68	+															200 µg	O08290	23
Cytokeratin 7	Ms IgG1	OV-TL 12/30	+							+								500 µl	Q28920	23
Cytokeratin 7	Ms IgG1	K72.7	+							+								500 µl	N75010	23
Cytokeratin 7	Ms IgG1	C68	+							+								500 µl	V10580	23
Cytokeratin 7, 54kD	Ms IgG1	OVTL12/30	+															1 ml	O01280	23
Cytokeratin 7,8	Ms IgG1	K72.7+TS1	+							+								500 µl	S40260	23
Cytokeratin 8	Rb	Pab	+							+	+							500 µl	BD8211	23
Cytokeratin 8	Ms IgG1	LP3K	+							+						IF		200 µg	O08300	23
Cytokeratin 8	Ms IgG1	K8.8	+							+					+			500 µl	Q29000	23
Cytokeratin 8	Ms IgM	34BH11	+				Mk,Rb			+								500 µl	N75100	23
Cytokeratin 8	Ms IgG1	M20	+							+								500 µl	N75060	23
Cytokeratin 8	Ms IgG1	TS1	+		-					+					+			500 µl	N75130	23
Cytokeratin 8, phospho (ser 431)	Ms	2D6	+							+					+			500 µl	U98930	23
Cytokeratin 8, phospho (ser 431)	Ms IgG1	5B3	+	+						+	+				+	IF		500 µl	U98860	23
Cytokeratin 8, phospho (ser 73)	Ms IgG2a	LJ4	+	+						+					+	IF		500 µl	U98980	23
Cytokeratin 8,18	Ms IgG1	5D3	+							+	+				+	IF		100 tests	GG1470	23
Cytokeratin 8,18	Ms IgG1	TS1+DC10	+							+								500 µl	S40320	23
Cytokeratin 8,18	Ms IgG2a	5D3	+							+								500 µl	N75180	23
Cytokeratin 10	Ms IgG1	DE-K10	+							+	+							1 ml	BM0240	23
Cytokeratin 10	Ms IgG1	LHP1	+		+	Sw				+						IF		500 µl	N74310	23
Cytokeratin 10	Ms IgG1	DE-K10	+		+	Dg,Ct				+	+					IF		500 µl	N74330	23
Cytokeratin 10, 57kD	Ms IgG1	RKSE60	+		+	Bv				+	+							1 ml	O16970	23
Cytokeratin 10/13	Ms IgG2a	DE-K13	+		+	Ct				+						IF		500 µl	N74370	23
Cytokeratin 13	Ms IgG2a	1C7	+							+								500 µl	N74410	23
Cytokeratin 13	Ms IgG2b	2D7	+							+								500 µl	N74440	23
Cytokeratin 13	Ms	1C7+2D7	+							+								500 µl	N74480	23
Cytokeratin 14	Rb	Pab	+							+	+							500 µl	GH5620	23
Cytokeratin 14	Ms IgG3	LL002	+							+	+							200 µg	174820	23
Cytokeratin 14	Ms IgG3	LL002	+		+					+	+							500 µl	N74510	23
Cytokeratin 15	Ms IgG2a	LHK15	+	+	+	Bv				+						IF		500 µl	N74550	23
Cytokeratin 16	Ms IgG1	LL025	+							+						IF		500 µl	N74590	23
Cytokeratin 17	Ms IgG2b	Ks17.E3	+		+					+	+							5 ml	GG1420	23
Cytokeratin 17	Ms IgG2b	E3	+		+					+						IF		500 µl	N74640	23
Cytokeratin 18	Ms IgG1	Ks 18.5	+							+	+	+						5 ml	GG1430	23
Cytokeratin 18	Ms IgG1	Ks18.27	+			Bv				+	+	+						50 µg	BM0260	23
Cytokeratin 18	Ms IgG1	Ks18.04	+							+						IF		50 µg	O33640	23
Cytokeratin 18	Ms IgG1	DC10	+							+	+					IF		500 µl	N74670	23
Cytokeratin 18	Ms IgG1	L2A1	+							+	+				+	IF		500 µl	V07480	23
Cytokeratin 18	Ms IgG1	DA-7	+							+								500 µl	N74710	23
Cytokeratin 18	Ms IgG	C-04	+							+								500 µl	V10520	23
Cytokeratin 18, phospho (ser 33)	Ms IgG1	IB4	+	+						+	+				+			500 µl	U99050	23
Cytokeratin 19	Rb	Pab	+							+	+					IF		500 µl	GH6132	23
Cytokeratin 19	Ms IgG1	BA17	+															500 µg	N96850	23
Cytokeratin 19	Ms IgG2b	KS19.2	+		+	Bv,F				+	+							50 µg	O20480	23
Cytokeratin 19	Ms IgG1	RCK108	+							+	+							1 ml	GG1440	23
Cytokeratin 19	Ms IgG2a	Ks19.1	+							+	+	+						50 µg	174910	23
Cytokeratin 19	Ms IgG1	RCK108	+							+	+							500 µl	GH3220	23
Cytokeratin 19	Ms IgG2a	A53-B	+							+	+					IF		500 µl	N74750	23

Immunologicals

A.80

interchim

### Research Area Code

- |   |  |   |   |  |
|---|--|---|---|--|
| 1 Allergens                             | 6 Cardiac Markers and related molecules  | 11 Drugs and resistance                             | 16 Lipides/Apolipo/Lipoproteins             | 20 Neuroscience                        |
| 2 Anglo/Histogenesis                    | 7 CD Markers                             | 12 Enzymes & enzymes inhibitors                     | 17 Membrane channels and transport proteins | 21 Post translational modifications    |
| 3 Apoptosis/cell cycle                  | 8 Cell adhesion                          | 13 Hematopoietic markers                            | 18 Metabolism/Energy pathways               | 22 Signal transduction/Stress response |
| 4 Blood and serum proteins              | 9 Cytokine/Chemokine/Growth factors      | 14 Hormones/Steroids                                | 19 Miscellaneous                            | 23 Structural proteins                 |
| 5 Cancer, Hypoxia and related molecules | 10 DNA Replication/Transcription/Repairs | 15 Infectious agents related molecules & resistance |   | 24 Tags and Markers                    |

# Primary Antibodies & Ags

## Alphabetical Listing

Name	Host - Isotype	Clone	Species Reactivity				Application						Size	Cat.#	Research Area
			Hu	Ms	Rt	Other	WB	IHC	ICC	EL	FC	IP			
Cytokeratin 19	Ms IgG1	BA17	+				+	+					500 µl	U99473	22
Cytokeratin 20	Ms IgG1	IT-Ks20.10	+		+	Sw		+	+	+			50 µg	GG1450	23
Cytokeratin 20	Ms IgG2a	Ks20.8	+	+				+	+				500 µl	N74840	23
Cytokeratin 20	Ms IgG1	Q2	+					+	+				500 µl	V07660	23
Cytokeratin 20	Ms IgG1	Q6	+					+	+		+		500 µl	V07730	23
Cytokeratin Type I	Ms IgG1	AE1	+	+	+	Bv,Mk+		+	+				200 µg	GG1480	23
Cytokeratin, HMW	Ms IgG1	SP116	+	+	+	Bv,Mk+		+	+		IF		500 µl	GH4182	23
Cytokeratin, HMW	Ms IgG1	34bE12	+			Mk,Hrs+		+			IF		500 µl	Q29110	23
Cytokeratin, HMW	Ms IgG1	AE3	+	+	+	Bv,Mk+		+			IF		500 µl	N75210	23
Cytokeratin, HMW	Ms IgG1	DE-SQ	+	+				+			IF		500 µl	N75250	23
Cytokeratin, LMW	Ms IgG1	SP115	+	+	+	Bv,Mk+		+	+		IF		500 µl	GH4520	23
Cytokeratin, LMW	Ms IgG1	AE1	+	+	+	Bv,Mk+		+			IF		500 µl	N75290	23
Cytokeratin, Multi	Ms IgG1	C-11	+	+	+	Bv,Fr		+			IF		500 µl	N75330	23
Cytokeratin, Pan	Ms IgG1	80	+					+	+		IF		1 ml	O04990	23
Cytokeratin, Pan	Ms IgG1	AE1/AE3	+	+	+	Bv,Mk+		+			IF		500 µl	N75350	23
Cytokeratin, Pan	Ms IgG's	cocktail	+					+			IF		500 µl	N75390	23
Cytokeratin, Pan	Ms IgG1	Lu-5	+	+		Bv,Ck+		+			IF		500 µl	N75450	23
Cytomegalovirus	Ms IgG1	M131603						+					200 µg	P43690	15
Cytomegalovirus	Gt	Pab							+				1 mg	P49340	15
Cytomegalovirus	GP	Pab								+			1 ml	N92690	15
Cytomegalovirus	Rb	Pab								+			1 ml	823310	15
Cytomegalovirus	Gt	Pab						+	+		IF		1 ml	O26700	15
Cytomegalovirus	Ms IgG1	BM 219							+	+		IF	1 ml	N97520	15
Cytomegalovirus	Ms IgG1	083								+		IF	100 µg	N94920	15
Cytomegalovirus	Ms IgG	981						+				IF	100 µg	N94910	15
Cytomegalovirus -Biotin	Gt	Pab						+	+			IF	1 ml	960660	15
Cytomegalovirus -FITC	Gt	Pab											1 ml	N89790	15
Cytomegalovirus -FITC	Ms IgG1	083								+		IF	100 µg	994770	15
Cytomegalovirus -FITC	Gt	Pab							+				1 ml	U72480	15
Cytomegalovirus -HRP	Gt	Pab						+	+	+			1 ml	U72490	15
Cytomegalovirus -HRP	Gt	Pab						+	+				1 ml	N92700	15
Cytomegalovirus, 66kD	Ms IgG1	881						+	+		Neut,IF		100 µg	N94930	15
Cytomegalovirus, 66kD LA	Ms IgG1	871						+	+		Neut,IF		100 µg	N94940	15
Cytomegalovirus, 70kD	Ms IgG1	084						+			IF		100 µg	378380	15
Cytomegalovirus, EA	Ms IgG2a	B2						+	+				1 mg	O01540	15
Cytomegalovirus, gB	Ms IgG1	1M13	+					+	+		IF		100 µg	AR0510	15
Cytomegalovirus, Glycoprotein B	Ms IgG	680							+		IF		100 µg	N95950	15
Cytomegalovirus, Glycoprotein B	Ms IgG1	1-M-12						+	+	+			100 µg	969370	15
Cytomegalovirus, gp gH	Ms IgG1	861						+	+		Neut,IF		100 µg	N94950	15
Cytomegalovirus, IE pp65	Ms IgG1	1L11	+					+	+		IF		100 µg	AR0530	15
Cytomegalovirus, IE pp72	Ms IgG2a	1K10	+					+	+		IF		100 µg	AR0520	15
Cytomegalovirus, IEA	Ms IgG2a	1-K-10						+	+	+			100 µg	N98270	15
Cytomegalovirus, IEA	Ms IgG1	1-L-11						+	+	+			100 µg	N98260	15
Cytomegalovirus, SLA	Ms IgG	680											100 µg	N95940	15
Cytomegalovirus, SLA	Ms IgG	780						+	+		IF		100 µg	N95930	15
Cytosine, 5-Methyl	Sh	Pab						+	+		+		250 µg	AM0270	19
Cytosine, 5-methyl	Sh	Pab						+			+		250 µg	P49350	19
Cytotoxic Eff. T Cells	Ms IgG1	C1.7	+								+		200 µg	O18570	3-22
Cytovillin, see ezrin															

### D

D4-GDI	Rb	Pab	+					+	+				500 µl	S47091	3
D4-GDI	Ms IgG1	97A1015	+					+			+		100 µg	GS2190	3
D4-GDI	Rb	Pab	+			Bv		+	+				500 µl	S47100	3
Dab1	Rb	Pab		+				+	+		+	IF	100 µl	S35850	20

**Species legend :** Bd : Bird, Bv : Bovine, Ck : Chicken or Hen, Ct : Feline, Dg : Canine, Dr : Drosophila, Eq : Equine, F : Fish, Fr : Frog, Ft : Ferret, GP : Guinea Pig, Gt : Goat, Hm : Hamster, Hrs : Horse, Hu : Human, Ko : Kangaroo, M : Mammalian, Mi : Mink, Mk : Monkey, Ms : Mouse, Ne : Nematode, Op : Opossum, Pl : plant, Ql : Quail, Rb : Rabbit, Rt : Rat, Sh : Sheep, Sw : Porcine, Sy Hm : Syrian Hamster, Xe : Xenopus, Ye : Yeast

**Size :** Size indicated in bold means several sizes and formats are available (sample size or bigger size, unpurified neat serum, without azide or BSA, positive control...) : contact us for more detail

**Application legend :** Bk : Blocking, CD : Cell detection, Ch : ChIP, COA : ELISA capture, Db : Dot Blot, DD : Double diffusion, EL : ELISA detection, EM : Electron Microscopy, FCM : Flow Cytometry, FIA : FluoroImmunoAssay, GS : Gel (super)shift, HA : Hemagglutination/Latex agglutination, ICC : ImmunoCytoChemistry, IEP : Immunoelectrophoresis, IF : Immunofluorescence, IHC : ImmunoHistoChemistry, IP : Immunoprecipitation/Immunopurification, ISH : In Situ Hybridization, KA : Kinase assay, LF : Lateral flow, Neph : Nephelometry, Neut : Neutralizing, RIA : RadioImmunoassay, RID : Radial Immunodiffusion, SB : Southern Blot, TIA : Turbidimetry

**Name :** Prefixes as 'alpha', 'D1-', 'Pro-',... are not considered for the alphanumerical sorting, and often included after the main name.

(+) : Expected species cross-reactivities based on immunogen sequence homology \_ Expected application suitability.