

Primary Antibodies & Ags

Alphabetical Listing

Name	Host - Isotype	Clone	Species Reactivity				Application						Size	Cat.#	Research Area	
			Hu	Ms	Rt	Other	WB	IHC	ICC	EL	FC	IP				Other
Ornithine Decarboxylase	Ms IgG1	MP16-2	+	+	+		+	+						500 µl	N79910	12
OSTC, C-term	Rb	Pab	+						+					100 µg	GK6080	17-23-5
OSTC, N-term	Rb	Pab	+						+					100 µg	GK6070	17-23-5
Osteocalcin	Ms IgG1	OC1	+			Bv	+	+	+					100 µg	O32780	14
Osteocalcin (aa. 1-22)	Rb	Pab	+						+			RIA		20 µl	L62810	14
Osteo-Inductive Factor (aa. 108-122)	Rb	Pab	+						+					20 µl	M73850	14
Osteo-Inductive Factor (aa. 187-198)	Rb	Pab	+						+					20 µl	M74040	14
Osteonectin	Rb	Pab	+						+					20 µl	L62880	14
Osteonectin	Ms IgG1	OST1	+					+	+	+				500 µg	N91010	14
Osteonectin	Ms IgG1	N50	+					+	+	+		RIA		100 µg	N88370	14
Osteonectin (aa. 272-286)	Rb	Pab	+						+					20 µl	L62820	14
Osteopontin	Rb	Pab	+			Sw,Dg	+	+						500 µl	GH5903	14
Osteopontin (aa. 130-145)	Rb	Pab	+					+	+					20 µl	N29780	14
Osteopontin (aa. 25-40)	Rb	Pab	+					+						20 µl	N09660	14
Osteoprotegerin	Ms IgG1	98A1071	+					+						100 µg	GS1660	5
Ovalbumin	Rb	Pab							+			IEP		2 ml	O25420	4
Ovalbumin	Rb	Pab				Ck			+					50 mg	576680	4
Ovalbumin Chicken	Rb	Pab				Ck						IEP,DD		2 ml	Q00190	4
Ovalbumin -HRP	Rb	Pab							+			IEP		20 mg	N97350	4
Oxazepam	Sh	Pab				+								1 mg	P59930	11
Ox-Fibrinogen, insoluble	Rb	Pab	+						+					20 µl	U63830	23
Ox-Fibrinogen, soluble	Rb	Pab	+						+					20 µl	U63800	23
Ox-Fibrinogen, total	Rb	Pab	+					+	+					20 µl	U63540	23
Oxycodone	Rb	Pab												1 mg	BA2590	11
Oxyntomodulin	Rb	Pab	+	+	+	+		+	+					100 µg	GU9460	18
Oxyphenbutazone	Rb	Pab					+					+		1 ml	P59940	11
Oxytocin	Rb	Pab	+	+	+	Rb,E.Coli	+	+	+					100 µl	P59950	20
Oxytocin	Rb	Pab	+	+	+	+	+	+	+					100 µg	H82350	14-20
Oxytocin Receptor	Rb	Pab			(+)	(Sh)	+	+						100 µg	D50310	17
Oxytocin Receptor	Rb	Pab	+						+					50 µl	FT2620	14-22
Oxytocin Receptor	Rb	Pab	+	+	+				+					50 µl	FT2600	14-22
P																
p/CIP/p300	Rb	Pab			+				+	+				100 µg	GU9470	3
p/CIP/p300	Rb	Pab			+				+	+				100 µg	GU9480	3
P1GF dimer, see VEGF																
P2Y12 Platelet ADP Receptor	Rb	Pab	+						+					50 µl	FT3670	22-20
P2Y12 Platelet ADP Receptor	Rb	Pab	+						+					50 µl	FS9940	22-20
P2Y9 / LPA4/GPR23	Rb	Pab	+	+					+					50 µl	FT6400	22-16
P2Y9 / LPA4/GPR23	Rb	Pab	+	+					+					50 µl	FT1890	22-16
p13	Ms IgG1	BM3	+						+		+			100 µg	AL8800	6
p14ARF	Rb	Pab	+						+	+				500 µl	N80121	10-3-5
p14ARF	Ms IgG1	14P03	+						+			+	IF	500 µl	Q35460	10-3-5
p14ARF	Ms IgG1	14P02	+						+			+	IF	500 µl	N80150	10-3-5
p14ARF	Rb	Pab	+						+	+			+	500 µl	N80120	10-3-5
p14ARF	Rb	Pab	+						+	+			IF	500 µl	S45650	10-3-5
p14ARF	Rb	Pab	+						+				IF	100 µl	AW5350	10-3-5
p14ARF	Rb	Pab	+						+					100 µl	AW7520	10-3-5
p14ARF	Rb	Pab	+						+					100 µl	AW7522	10-3-5
p14ARF	Rb	Pab	+						+					100 µg	GR4150	10-3-5
p14ARF	Rb	Pab	+						+					100 µg	GR3360	10-3-5
p15INK4b	Ms IgG1	15P06	+			Dg	+	+				+	IF	500 µl	N80260	3
p15INK4b	Ms IgG1	DCS-114	+						-	-		+	IF	500 µl	N80170	3
p15INK4b	Ms IgG1	GF9	+						-	-		+	IF	500 µl	N80230	3
p15INK4b	Rb	Pab	+						-	-		+	IF	500 µl	N80190	3

Research Area Code

- | | | | | |
|---|--|---|---|--|
| 1 Allergens | 6 Cardiac Markers and related molecules | 11 Drugs and resistance | 16 Lipides/Apolipo/Lipoproteins | 20 Neuroscience |
| 2 Angio/Histogenesis | 7 CD Markers | 12 Enzymes & enzymes inhibitors | 17 Membrane channels and transport proteins | 21 Post translational modifications |
| 3 Apoptosis/cell cycle | 8 Cell adhesion | 13 Hematopoietic markers | 18 Metabolism/Energy pathways | 22 Signal transduction/Stress response |
| 4 Blood and serum proteins | 9 Cytokine/Chemokine/Growth factors | 14 Hormones/Steroids | 19 Miscellaneous | 23 Structural proteins |
| 5 Cancer, Hypoxia and related molecules | 10 DNA Replication/Transcription/Repairs | 15 Infectious agents related molecules & resistance | | 24 Tags and Markers |

Primary Antibodies & Ags

Alphabetical Listing

Name	Host - Isotype	Clone	Species				Reactivity				Application					Size	Cat.#	Research Area	
			Hu	Ms	Rt	Other	Hu	Ms	Rt	Other	WB	IHC	ICC	EL	FC				IP
p15INK4b	Rb	Pab		+	+				+						+	IF,KA	500 µl	N80210	3
p16	Rb	Pab	+						+	+							100 µl	P59960	3
p16INK4a	Ms IgG2a	JC8	+	+					-	+							500 µl	S41190	3
p16INK4a	Ms IgG2a	16P07	+	+					-	+				+	IF		500 µl	N80440	3
p16INK4a	Ms IgG1	DCS-50.1/A7	+						+	-				+	IF		500 µl	085152	3
p16INK4a	Ms IgG1	ZJ11	+						+	-				+	IF,KA		500 µl	N80320	3
p16INK4a	Ms IgG1	16P04	+	+			Dg		+	+				+	IF		500 µl	N80380	3
p16INK4a	Ms IgG1	JC4	+						-	-				+	IF		500 µl	N80420	3
p16INK4a	Rb	Pab	+						+					+	IF,KA		500 µl	N80350	3
p16INK4a	Rb	Pab	+						+								500 µl	V12950	14
p18INK4c	Ms IgG1	18P118	+	+					+	+				+	IF		500 µl	N80590	3
p18INK4c	Rb	Pab	+	+					+					+	IF,KA		500 µl	N80540	3
p18INK4c	Rb	Pab	+	+					-	-				+	IF,KA		500 µl	N80560	3
p19ARF	Rb	Pab		+					+								500 µl	V14400	3
p19INK4d	Ms IgG1	DCS-100	+						-					+	IF		500 µl	N80640	3
p19INK4d	Rb	Pab		+	+				-					+	KA		500 µl	N80660	3
p19Sklp1	Rb	Pab	+	+					+					+			500 µl	N80710	3
p21WAF1	Rb	Pab		+	+				-	+				+	KA		500 µl	885321	3
p21WAF1	Ms IgG2a	DCS-60.2	+						-	+				-	+	IF	500 µl	423250	3
p21WAF1	Ms IgG1	HZ52	+	+	+		Bv		+					+			500 µl	775401	3
p21WAF1	Ms IgG1	HJ21	+	+					+	-				-	-	IF	500 µl	N80840	3
p21WAF1	Ms IgG2b	CP68	+						-	-				+	IF		500 µl	N80740	3
p21WAF1	Ms IgG2b	CP74	+	+					+	+				+	+		500 µl	N80770	3
p21WAF1	Rb	Pab	+	+					-					+	KA		500 µl	N80860	3
p21WAF1	Rb	Pab	+	+					-					-	KA		500 µl	N80880	3
p27	Rb	Pab	+						+		+			+			100 µl	P59970	3
p27Kip1	Ms IgG2a	1B4	+						+								500 µl	V08900	3
p27Kip1	Rb	Pab		+					+					+	KA		500 µl	N80910	3
p27Kip1	Rb	Pab	+	+	+				+	+				+			500 µl	V16730	3
p27Kip1	Ms IgG1	DCS-72.F6	+	+	+		Dg		+	+				+	+	IF	500 µl	224221	3
p27Kip1	Ms IgG1	HBB6	+						+					+	+	IF	500 µl	N80970	3
p31, see Cyclin cdk5																			
p34, see Cyclin cdc2																			
p34cdc2, see CDK1																			
p34cdc2 Ser/Thr Kinase	Ms IgG2a	17	+						+	+				+			250 µg	O07820	21
p34cdc2 Ser/Thr Kinase -Biotin	Ms IgG2a	17	+						+	+				+			250 µg	O14020	21
p34cdc2 Ser/Thr Kinase -FITC	Ms IgG2a	17	+						+	+				+			250 µg	O14030	21
p35nck5a	Ms IgG2b	ES19	+											+	KA		500 µl	N81070	3
p38 beta, C-term	Rb	Pab	+						+	+	+						100 µg	GL3400	22-21-12
p38 delta, C-term	Rb	Pab	+	+	+		Mk		+	+							100 µg	GL3410	22-21-12
p38 gamma, C-term	Rb	Pab	+						+	+							100 µg	GL3420	22-21-12
p38, C-term	Rb	Pab	+						+	+							100 µg	GL3850	22-21-12
p38, N-term	Rb	Pab	+						+	+							100 µg	GL3390	22-21-12
p40MO15, see CDK7																			
P42IP4	Ms IgG1	P421					Sw		+	+							100 µg	S33700	20
p43, see CREB-1																			
p53	Rb IgG	SP5	+						+	+							500 µl	V17050	3-5-10
p53	Rb	Pab	+	+					+								100 µl	GS1190	3-5-10
p53	Ms IgG2a	Mab	+						+	+					IF		100 µg	C84510	3-5-10
P53	Ms IgG1	Mab	+	+	+				+	+					IF		100 µg	C82740	3-5-10
p53	Ms IgG1	PAb 240	+	+	+		Sw,Bv+		+	+				+	+		500 µl	138162	3-5-10
p53	Ms IgG1	PAb 1801	+						+	+				+	+		500 µl	387060	3-5-10
p53	Ms IgG2a	BP53-12	+						+	+				+			500 µl	N81150	3-5-10
p53	Ms IgG1	PAb 122	+	+	+		Hm,Mk		+	+				+	+	IF	500 µl	085261	3-5-10
p53	Ms IgG2b	DO-7	+				Bv,Mk		+	+				+	+	IF	500 µl	N81190	3-5-10

Species legend : Bd : Bird, Bv : Bovine, Ck : Chicken or Hen, Ct : Feline, Dg : Canine, Dr : Drosophila, Eq : Equine, F : Fish, Fr : Frog, Ft : Ferret, GP : Guinea Pig, Gi : Goat, Hm : Hamster, Hrs : Horse, Hu : Human, Ko : Kangaroo, M : Mammalian, Mi : Mink, Mk : Monkey, Ms : Mouse, Ne : Nematode, Op : Opossum, Pl : plant, Ql : Quail, Rb : Rabbit, Rt : Rat, Sh : Sheep, Sw : Porcine, Sy Hm : Syrian Hamster, Xe : Xenopus, Ye : Yeast

Size : Size indicated in bold means several sizes and formats are available (sample size or bigger size, unpurified neat serum, without azide or BSA, positive control...) : contact us for more detail

Application legend : Bk : Blocking, CD : Cell detection, Ch : ChIP, COA : ELISA capture, Db : Dot Blot, DD : Double diffusion, EL : ELISA detection, EM : Electron Microscopy, FCM : Flow Cytometry, FIA : FluoroImmunoAssay, GS : Gel (super)shift, HA : Hemagglutination/Latex agglutination, ICC : ImmunoCytoChemistry, IEP : Immunoelectrophoresis, IF : Immunofluorescence, IHC : ImmunoHistoChemistry, IP : Immunoprecipitation/Immunopurification, ISH : In Situ Hybridization, KA : Kinase assay, LF : Lateral flow, Neph : Nephelometry, Neut : Neutralizing, RIA : RadiolImmunoassay, RID : Radial Immunodiffusion, SB : Southern Blot, TIA : Turbidimetry

Name : Prefixes as 'alpha', 'D1-', 'Pro-',... are not considered for the alphanumerical sorting, and often included after the main name.

(+) : Expected species cross-reactivities based on immunogen sequence homology _ Expected application suitability.

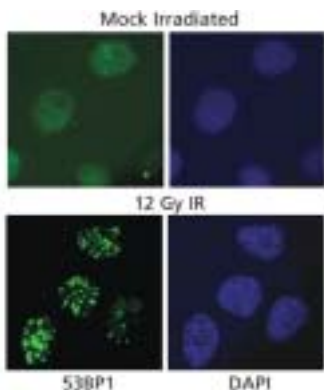
Primary Antibodies & Ags

Alphabetical Listing

Name	Host - Isotype	Clone	Species Reactivity				Application						Size	Cat.#	Research Area
			Hu	Ms	Rt	Other	WB	IHC	ICC	EL	FC	IP			
p53	Ms IgG2a	DO-1	+			Bv,Mk	+	+		+	+	IF,GS	500 µl	165840	3-5-10
p53	Ms IgG1	PAb 246	+	+		Hm	-				+		500 µl	N81250	3-5-10
p53	Ms	cocktail	+				+	+			+		500 µl	N81280	3-5-10
p53	Rb	Pab	+	+	+		+	+					500 µl	V16060	3-5-10
p53	Ms IgG2a	DO-2	+				+	+					500 µl	V01670	3-5-10
p53	Ms IgG1	DO-11	+				+						500 µl	V01750	3-5-10
p53	Ms IgG1	DO-12	+				+						500 µl	V01830	3-5-10
p53	Ms IgG1	DO-13	+				+						500 µl	V01910	3-5-10
p53	Ms IgG1	DO-14	+				+						500 µl	V01990	3-5-10
p53	Ms IgG1	ICA.9	+				+	+					500 µl	V02070	3-5-10
p53	Rb	Pab	+				+						500 µl	V14930	3-5-10
p53	Rb	Pab	+				+				+		100 µg	GR4020	3-5-10
p53	Rb	Pab	+				+				+		100 µg	GR5130	3-5-10
p53	Rb	Pab	+				+				+		100 µg	GR3440	3-5-10
p53 Binding Protein 1	Rb	Pab	+	+			+	+					100 µg	GR4840	10
p53 Binding Protein 1	Rb	Pab	+	+			+	+					100 µg	GR4630	10
p53 binding protein 1	Rb	Pab	+				+	+					100 µl	AW8720	10
p53 binding protein 1	Rb	Pab	+				+	+					100 µl	AW8710	10
p53 Binding Protein 1	Rb	Pab	+	+			+	+					100 µl	BB7350	10
p53 Oncogene	Ms IgG1	PAb240	+				+						200 µg	N96640	5
p53, acetylated (K-320)	Rb	Pab	+				+		+				100 µl	H80800	22-10-3-21
p53, acetylated (K-373)	Rb	Pab	+				+		+				100 µl	GS8110	22-10-3-21
p53, AcK317	Rb	Pab	+	+			+						50 µl	FX6680	3-5-10
p53, AcK379	Rb	Pab	+	+			+						50 µl	BD2790	3-5-10
p53, AcK382	Rb	Pab	+				+						50 µl	FX6670	3-5-10
P53, C-term	Ms IgG2b	PAb 122	+								+		200 µg	O08560	3-5-10
p53, <i>Nushift</i>	Rb	Pab	+	+	+							GS	17 Rxns	GS0690	3-5-10
p53, phospho (Ser 392)	Ms IgG1	Mab	+	+			+		+				100 µg	C84400	3-5-10
p53, phosphorylated	Rb	Pab	+			Mk	+						100 µl	AW7750	3-5-10-21
p53, phosphorylated	Ms IgG1	FP3-2	+				+	+					500 µl	V03020	3-5-10-21
P53, Sumoylation site	Rb	Pab	+						+				100 µg	BK9260	21-3-5-10
p53, total	Rb	Pab	+	+			+				+		100 µl	BC2690	3-5-10
p53, Wild Type	Ms IgG1	PAb 246		+									200 µg	N96660	3-5-10
p57	Ms IgG2b	57P06	+	+			-	+			+		500 µl	N81340	3
p57	Ms IgG1	57P05	+				+	-					500 µl	954961	3
p57	Ms IgG2b	KP39	+	+			-	+			+		500 µl	N81380	3
p57 + C1832	Rb	Pab	+	+		Bv	-	+					500 µl	S48120	3
p58.1, see CD158a															
p58.2, see CD158b															
p63	Ms IgG2a	Mab	+	+	+		+	+				IF	100 µg	C87000	3-5
p63	Ms IgG1	87C553	+				+						100 µg	GS1510	10-5
p63 (p53 Family Member)	Ms IgG2a	4A4	+	+	+		+	+			+	IF	500 µl	Q36930	3-5
p63 (p53 Family Member)	Ms IgG2a	63P02	+	+	+		+	+			+	IF	500 µl	Q36990	3-5
p63 (p53 Family Member)	Ms IgG1	63P03	+				+	-			+	IF	500 µl	Q37050	3-5

A.178

p53 binding protein 1 (53BP1)



- ◆ Specificity : p53 binding protein 1 (53BP1)
- ◆ Catalog number : **AW8720**
- ◆ Host and isotype : Rabbit IgG
- ◆ Species reactivity : Human (and mouse in IHC)
- ◆ Applications and suggested dilution :
 - Western blot* 1:1000 to 1:10000 (chemilum.)
 - *a band at ~220 kD is seen on SDS-PAGE
 - Immunocytochemistry (IF) 1:100 to 1:500

Detection of IR induced foci of 53BP1 by ICC, using AW9720. Samples : Proliferating U2OS cells exposed to 12 Gy of IR or mock irradiated.

Primary Antibodies & Ags

Alphabetical Listing

Name	Host - Isotype	Clone	Species				Reactivity				Application						Size	Cat.#	Research Area		
			Hu	Ms	Rt	Other	WB	IHC	EL	FC	IP	Other	WB	IHC	EL	FC				IP	Other
p63 (p53 Family Member)	Ms IgG2a	4A4+63P02	+	+	+					+	+					+	IF	500 µl	N81410	3-5	
p70S6	Rb	Pab								+								100 µl	AW7540	22-21-12	
P70S6k	Rb	Pab								+								100 µg	GR4750	22-21-12	
p70S6K, C-term	Rb	Pab											+					100 µg	GL2360	22-21-12	
p70S6Kbeta, C-term	Rb	Pab								+			+					100 µg	GL6400	22-21-12	
p72Syk	Ms IgG1	SYK-01	+	+	+					+	+				+			100 µg	GG2650	21	
p73	Ms IgG1	5B429								+								100 µg	GS2470	10-3-5	
p73	Rb	Pab								+					+			100 µg	GR5400	10-3-5	
p73	Rb	Pab								+								500 µl	S46260	10-3-5	
p73	Rb	Pab								+								500 µl	S46300	10-3-5	
p73	Rb	Pab								+	(+)					+		100 µl	GP7960	10-3-5	
p73 alpha	Rb	Pab								+	(+)	(Mk)			+	+		100 µg	E60060	10-3-5	
p73 alpha	Ms IgG1	ER-13								+			Mk		+		IF,GS	500 µl	N81450	10-3-5	
p73 alpha/beta	Rb	Pab								+	(+)		Mk		+	+		100 µg	D35980	10-3-5	
p73 alpha/beta	Ms IgG1	ER-15								+			Mk		+		IF,GS	500 µl	N81470	10-3-5	
p73 alpha/beta	Ms IgG1	GC-15								+			Mk		+		IF,GS	500 µl	N81490	10-3-5	
p73 alpha/beta	Ms IgG1	cocktail								+			Mk		+		IF,GS	500 µl	N81520	10-3-5	
p73 beta	Ms	Mab								+			Mk,Hm		+		+	100 µg	C79140	10-3-5	
p73 beta	Rb	Pab								+					+			100 µg	D32150	10-3-5	
p73 delta N	Ms IgG1	38C674								+					+			100 µg	GS1170	10-3-5	
p80, see ALK																					
p81, see Ezrin																					
p95 /NBS1	Ms IgG1	Mab								+							+	100 µl	AW5230	10-3	
p95 /NBS1	Ms	Mab								+							+	100 µl	AW5220	10-3	
p95VAV	Ms IgG1	VAV-30								+	+						+	IF	500 µl	N81540	10-3
p100	Ms IgG1	Mab								+					+			100 µg	GK2350	10	
p100	Ms IgG1	Mab								+					+			100 µg	GK2360	10	
p100	Rb	Pab								+					+			100 µg	GK6550	10	
p107	Ms IgG1	SD9								+	+							100 µl	GS2000	10-5	
p107	Ms IgG1	SD2								+							GS	500 µl	N79950	3	
p107	Ms IgG1	SD9								+	+	+	Mk				GS	500 µl	N79970	3	
p107	Ms IgG1	SD15								+	+		Mk				GS	500 µl	N79990	3	
p107	Rb	Pab								+	+	+						500 µl	Q35240	3	
p107, <i>Nushift</i>	Ms IgG1	SD9								+	+						GS	17 Rxns	GS0480	10-5	
p130	Ms IgG1	130P211								-	-				+	IF		500 µl	863011	3	
p130	Ms IgG1	130P215								+	+				+	IF		500 µl	N80030	3	
p130cas	Ms IgG1	CAS-14								+	+				+			500 µl	N80070	23	
p170 / MDR-1	Ms IgG1	265/F4								+	+		Hm		+	IF		500 µl	N80480	11	
p170 / MDR-1	Ms IgG1	F4								+	+		Hm		+	IF		500 µl	900561	11	
p170 / p-Glycoprotein / MDR	Ms IgG2a	5B12								+								500 µl	V04820	11	
p170 / p-Glycoprotein / MDR	Ms IgG2a	C494								+								500 µl	V06090	11	
p300	Ms	Mab								+					+			100 µg	GU9490	10-5	
p300	Rb	Pab								+					+			100 µg	GU9500	10-5	
p300	Ms IgG1	NM11								+								100 µl	GS1590	10-5	
p300	Rb	Pab								+						+		100 µl	Q61611	10-5	
p300	Rb	Pab								+						+		100 µl	Q61612	10-5	
p300	Rb	Pab								+						+		100 µg	GR5890	10-5	
p300	Rb	Pab								+						+		100 µg	GR5480	10-5	
p300	Ms IgG2b	NM11								+	+	+	Mk,Mi		-	+	IF	500 µl	N81000	10-5	
p300	Ms IgG1	AC26								+							+	500 µl	N81050	10-5	
PACAP	Rb	Pab								+	(+)	(+)			+			100 µg	AN0680	12-20	
PACAP Receptor Type 1	Rb	Pab								+					+			50 µl	GG4990	14-22	
PACAP Receptor Type 1	Rb	Pab								+	+	+			+			50 µl	FT6610	14-22	
PACAP related protein	Rb	Pab								+			(+)		+	+		100 µg	GU9520	12-20	
PACAP related protein	Rb	Pab								+					+	+		100 µg	GU9510	12-20	
PACSN1, middle region	Rb	Pab								+	+				+	+		100 µg	GL7360	22-21	
PACSN1, N-term	Rb	Pab								+	+				+	+		100 µg	GL7350	22-21	
PACSN2, C-term	Rb	Pab								+	+				+	+		100 µg	GL7370	22-21	
PACSN2, middle region	Rb	Pab								+					+	+		100 µg	GL7380	22-21	
PACSN3, middle region	Rb	Pab								+	+				+	+		100 µg	GL7400	22-21	
PACSN3, N-term	Rb	Pab								+	+				+	+		100 µg	GL7390	22-21	
PADGEM, see CD62p																					
PAEL Receptor (GPR37)	Rb	Pab								+	+	+			+			50 µl	FS9420	22	
PAEL Receptor (GPR37)	Rb	Pab								+					+			50 µl	GG5060	22	

Primary Antibodies & Ags

Alphabetical Listing

Name	Host - Isotype	Clone	Species				Reactivity				Application						Size	Cat.#	Research Area	
			Hu	Ms	Rt	Other	WB	IHC	EL	FC	IP	Other	WB	IHC	EL	FC				IP
Paf1	Rb	Pab	+							+								100 µg	GR3870	24-23-10
Paf1	Rb	Pab	+							+								100 µg	GR5110	24-23-10
PAK1, N-term	Rb	Pab	+								+	+						100 µg	GL5820	22-21-12
PAK2, N-term	Rb	Pab	+								+	+						100 µg	GL5830	22-21-12
PAK3, N-term	Rb	Pab	+								+	+						100 µg	GL5840	22-21-12
PAK4	Rb	Pab	+								+				+			100 µg	GR5870	22-21
PAK4, N-term	Rb	Pab	+	+							+	+	+					100 µg	GL5850	22-21-12
PAK5	Rb	Pab	+								+							50 µl	GG4930	22-21-12
PAK5	Rb	Pab	+								+	+						100 µg	BC4500	22-21-12
PAK6	Rb	Pab	+								+	+			+			100 µg	GL5860	22-21-12
PAK6	Rb	Pab	+				Bv				+				+			100 µl	AW9220	22-21-12
Pancreatic Amylase	Ms	Mab	+								+	+						1 mg	GU9530	12
Pancreatic Amylase	Ms	Mab	+								+	+						1 mg	GU9540	12
Pancreatic Na-Bicarbonate Transp. 1	Rb	Pab	+	+	+		Rb				+	+						100 µg	I55250	17
Pancreatic Polypeptide	Rb	Pab		+							+	+						100 µg	GU9550	14
Pancreatic Polypeptide	Rb	Pab																200 µl	P60040	14
Pancreatic Polypeptide	Rb	Pab	+									+						500 µl	Q37340	14
Papain	Rb	Pab									+							2 ml	AK2260	19
Papain	Rb	Pab									+	+						1 mg	AK2300	19
Papain (Carica papaya)	Gt	Pab										+		+				50 mg	N91910	12
Papain (Carica papaya)	Gt	Pab										+						2 ml	O25850	12
Papain (Carica papaya) -HRP	Gt	Pab										+			IEP			20 mg	N97780	12
Papilloma Virus 6	Ms IgG1	M8011532																200 µg	P46690	15
Papilloma Virus 11	Ms IgG1	M8011533																200 µg	P46630	15
Papilloma Virus 16	Ms IgG1	M8011535																200 µg	P46650	15
Papilloma Virus 18	Ms IgG1	M8011541																200 µg	P46670	15
PAPK	Rb	Pab		+							+							100 µl	GP7150	21-3
PAPP-A	Ms IgG2b	M998311	+									+						1 mg	P46910	14
PAPP-A	Ms IgG2b	10E1	+									+						1 mg	S34460	14
PAPP-A	Ms IgG2b	10E2	+									+						1 mg	S34480	14
PAPP-A	Ms IgG2a	4G11	+									+						1 mg	GG2700	14
PAPP-A	Ms IgG2b	5H9	+									+						1 mg	S34470	14
PAPP-A	Ms IgG2a	10A5	+									+						1 mg	GG2660	14
PAPP-A	Ms IgG2a	18A10	+								+							1 mg	GG2680	14
PAPP-A	Ms IgG2a	3C8	+									+						1 mg	GG2690	14
PAPP-A	Ms IgG2a	10H9	+									+						1 mg	GG2670	14
PAPSS1, C-term	Rb	Pab	+								+	+						100 µg	GL7420	18-12
PAPSS1, N-term	Rb	Pab	+								+	+						100 µg	GL7410	18-12
PAPSS2, C-term	Rb	Pab	+								+	+						100 µg	GL7440	18-12
PAPSS2, N-term	Rb	Pab	+								+	+						100 µg	GL7430	18-12
PAR 4	Rb	Pab									+							100 µg	AW7550	10-3-5
PAR polymer	Rb	Mab									+	+	v					100 µl	401191	3
PAR polymer	Rb	Pab									+							100 µl	Q68980	3
Paracellin-1 / Claudin-16	Rb	Pab	+								+	+						100 µg	GU9560	8
Parafibromin	Rb	Pab	+								+			+				100 µg	GR5670	10-23-5
Parafibromin	Rb	Pab	+								+			+				100 µg	GR5720	10-23-5
Parainfluenza -Biotin	Gt	Pab										+						1 ml	N90190	15
Parainfluenza Type 1	Gt	Pab										+						1 ml	O26820	15
Parainfluenza Type 1	Ms IgG2b	BID02										+			IF			100 µg	N95410	15
Parainfluenza Type 1 -Biotin	Gt	Pab										+						1 ml	N90180	15
Parainfluenza Type 1 -FITC	Ms IgG2	1231																100 µg	O02390	15
Parainfluenza Type 1 -HRP	Gt	Pab										+			IF			1 ml	N93550	15
Parainfluenza Type 2	Ms IgG2a	1241													IF			100 µg	N95430	15
Parainfluenza Type 2	Ms IgG2a	BDI121													IF			100 µg	AL8830	15
Parainfluenza Type 2	Ms IgG2a	PIV21										+			IF			100 µg	S34800	15

Research Area Code

- | | | | | |
|---|--|---|---|--|
| 1 Allergens | 6 Cardiac Markers and related molecules | 11 Drugs and resistance | 16 Lipides/Apolipo/Lipoproteins | 20 Neuroscience |
| 2 Anglo/Histogenesis | 7 CD Markers | 12 Enzymes & enzymes inhibitors | 17 Membrane channels and transport proteins | 21 Post translational modifications |
| 3 Apoptosis/cell cycle | 8 Cell adhesion | 13 Hematopoietic markers | 18 Metabolism/Energy pathways | 22 Signal transduction/Stress response |
| 4 Blood and serum proteins | 9 Cytokine/Chemokine/Growth factors | 14 Hormones/Steroids | 19 Miscellaneous | 23 Structural proteins |
| 5 Cancer, Hypoxia and related molecules | 10 DNA Replication/Transcription/Repairs | 15 Infectious agents related molecules & resistance | | 24 Tags and Markers |

Primary Antibodies & Ags

Alphabetical Listing

Name	Host - Isotype	Clone	Species Reactivity				Application						Size	Cat.#	Research Area	
			Hu	Ms	Rt	Other	WB	IHC	EL	FC	IP	Other				
Parainfluenza Type 2 -FITC	Ms IgG2a	1241											100 µg	O02400	15	
Parainfluenza Type 2&3	Gt	Pab										+	IF	1 ml	379840	15
Parainfluenza Type 2&3 -FITC	Gt	Pab											1 ml	N90200	15	
Parainfluenza Type 2&3 -HRP	Gt	Pab										+	IF	1 ml	N93560	15
Parainfluenza Virus Type 1	Ms IgG2a/k	M4090917										+	1 mg	P46730	15	
Parainfluenza Virus Type 1	Gt	Pab										+	1 mg	P60060	15	
Parainfluenza Virus Type 2	Ms IgG	M2110190										+	1 mg	P46710	15	
Parainfluenza Virus Type 2&3	Gt	Pab										+	1 mg	P60070	15	
Parainfluenza Virus Type 3	Ms IgG	M0301307										+	1 mg	P46720	15	
Parathyroid horm. rel. pept. (107-111)	Rb	Pab	+									+	20 µl	N29820	14	
Parathyroid horm. rel. pept. (1-30)	Rb	Pab	+										RIA	20 µl	L63180	14
Parathyroid Hormone	Rb	Pab	+			Bv						+	RIA	500 µl	P60150	14
Parathyroid Hormone	Gt	Pab	+										RIA	1 ml	U72050	14
Parathyroid Hormone	Rb	Pab	+										RIA	1 ml	U72090	14
Parathyroid Hormone	Gt	Pab	+			Bv							RIA	100 µl	P60160	14
Parathyroid Hormone	Gt	Pab	+			Bv						+	100 µl	U72060	14	
Parathyroid Hormone	Gt	Pab	+			Bv						+	100 µl	U72070	14	
Parathyroid Hormone	Rb	Pab	+									+	100 µl	P60190	14	
Parathyroid Hormone	Ms IgG1	OP-4	+									+	500 µl	V04170	14	
Parathyroid Hormone	Rb	Pab	+	+								+	500 µl	GH5294	14	
Parathyroid Hormone	Rt IgG2a	PTH01	+									+	500 µl	Q37400	14	
Parathyroid Hormone (aa. 1-34)	Ms IgG1	OP-4	+									+	1 mg	P57180	14	
Parathyroid Hormone (aa. 15-25)	Ms IgG1	B1/70	+										RIA	10 µg	L46780	14
Parathyroid Hormone (aa. 15-25)	Ms IgG1	A1/70	+										RIA	10 µg	U62940	14
Parathyroid Hormone (aa. 44-68)	Ms IgG	M01081	+									+	1 mg	P46740	14	
Parathyroid Hormone (aa. 53-68)	Ms IgG1	D1.1	+									+	10 µg	U62950	14	
Parathyroid Hormone (aa. 53-84)	Ms IgG1	D1.5	+									+	10 µg	U62930	14	
Parathyroid Hormone Receptor 1	Rb	Pab	+									+	50 µl	FT6090	14-22	
Parathyroid Hormone Receptor 2	Rb	Pab	+									+	50 µl	FT2640	14-22	
Parathyroid Hormone Receptor 2	Rb	Pab	+									+	50 µl	FT2650	14-22	
Parathyroid Hormone Receptor Type 1	Ms IgG1	3D1.1	+									+	500 µl	Q37420	14	
Parathyroid Hormone, C-term	Gt	Pab	+			Bv							RIA	100 µl	P60100	14
Parathyroid Hormone, C-term	Rb	Pab	+			Bv							RIA	100 µl	P60110	14
Parathyroid Hormone, C-term	Gt	Pab										+	RIA	500 µg	P61900	14
Parathyroid Hormone, C-term	Ms IgG1	M01102410	+									+	1 mg	P46750	14	
Parathyroid Hormone, Intact	Gt	Pab	+			Bv							RIA	100 µl	P60120	14
Parathyroid Hormone, Intact	Rb	Pab	+			Bv							RIA	100 µl	P60170	14
Parathyroid Hormone, N-term	Gt	Pab	+										RIA	1 ml	P60130	14
Parathyroid Hormone, N-term	Rb	Pab	+										RIA	100 µl	P60140	14
Parathyroid Hormone, N-term	Gt	Pab	+									+	500 µg	P61910	14	
Parathyroid Hormone, N-term	Ms IgG1	M01102409	+									+	1 mg	P46760	14	
PARC / H7-AP1	Rb	Pab	+									+	100 µg	GR5800	10	
Parkin	Rb	Pab	+									+	100 µg	U59640	18-20	
Parkin	Rb	Pab	+	+	+							+	500 µl	BF2671	20	
Parkin isoform-2 protein	Gt	Pab	+									+	100 µg	GU9570	18-20	
Parkin, N-term	Gt	Pab	+									+	200 µl	S35300	20	
Parkin, N-term peptide	Gt	Pab	+									+	100 µl	P60200	20	
PARP	Ms IgG1	Mab	+	+	+	Hm,Mk+	+	+	+				100 µg	AW5930	3-10	
PARP	Ms IgG1	Mab	+	+	+	Hm,Mk	+	+	+				50 µl	AW5920	3-10	
PARP	Rb	Pab	+	+	+	Bv	+	+					100 µl	AW9230	3-10	
PARP	Ms	C2-10	+	+	+	Mk,Hm	+	+					50 µg	Q68990	3	
PARP	Rb	Pab	+	+	+		+	+					500 µl	S43930	3	
PARP	Rb	Pab	+	+	+		+	+					500 µl	S43924	3	
PARP	Ms IgG1	PAR01	+	+	+	Hm,Xe+	+						500 µl	N81570	3	
PARP	Ms IgG1	A6.4.12	+	+	+	Hm,Xe+	+	+					500 µl	V09752	3	

Species legend : Bd : Bird, Bv : Bovine, Ck : Chicken or Hen, Ct : Feline, Dg : Canine, Dr : Drosophila, Eq : Equine, F : Fish, Fr : Frog, Ft : Ferret, GP : Guinea Pig, Gt : Goat, Hm : Hamster, Hrs : Horse, Hu : Human, Ko : Kangaroo, M : Mammalian, Mi : Mink, Mk : Monkey, Ms : Mouse, Ne : Nematode, Op : Opossum, Pl : plant, Ql : Quail, Rb : Rabbit, Rt : Rat, Sh : Sheep, Sw : Porcine, Sy Hm : Syrian Hamster, Xe : Xenopus, Ye : Yeast

Size : Size indicated in bold means several sizes and formats are available (sample size or bigger size, unpurified neat serum, without azide or BSA, positive control...) : contact us for more detail

Application legend : Bk : Blocking, CD : Cell detection, Ch : ChIP, COA : ELISA capture, Db : Dot Blot, DD : Double diffusion, EL : ELISA detection, EM : Electron Microscopy, FCM : Flow Cytometry, FIA : FluoroImmunoAssay, GS : Gel (super)shift, HA : Hemagglutination/Latex agglutination, ICC : ImmunoCytoChemistry, IEP : Immunoelectrophoresis, IF : Immunofluorescence, IHC : ImmunoHistoChemistry, IP : Immunoprecipitation/Immunopurification, ISH : In Situ Hybridization, KA : Kinase assay, LF : Lateral flow, Neph : Nephelometry, Neut : Neutralizing, RIA : RadiolImmunoassay, RID : Radial Immunodiffusion, SB : Southern Blot, TIA : Turbidimetry

Name : Prefixes as 'alpha', 'D1-', 'Pro-',... are not considered for the alphanumerical sorting, and often included after the main name.

(+) : Expected species cross-reactivities based on immunogen sequence homology _ Expected application suitability.

Primary Antibodies & Ags

Alphabetical Listing

Name	Host - Isotype	Clone	Species				Reactivity	Application							Size	Cat.#	Research Area	
			Hu	Ms	Rt	Other		WB	IHC	ICC	EL	FC	IP	Other				
PARP	Rb	Pab	+	+	+	Bv	+									500 µl	V12530	22
PARP 2	Rb	Pab	+				+									100 µl	AW7560	3-10
Parvalbumin	Ms IgG1	Mab	+	+	+	Ct,Dg+	+	+	+							100 µl	C79600	17
Parvovirus	Ms IgG2a	M01102913					Dg			+						1 mg	U71740	15
Parvovirus, B19	Ms IgG	BIOD810	+					+	+				IF			100 µg	U63070	15
Patched 1	Rb	Pab	+	+				+								100 µg	AW7840	22
Patched 2	Rb	Pab	+	+				+								100 µg	AW7850	22
pATF-2	Ms IgG1	103C411	+					+								100 µg	GS2240	10
Pax-3, <i>Nushift</i>	Rb	Pab	+	+									GS			100 µl	GS1850	10
Pax-5	Rb	Pab	+	+	+			+	+							500 µl	GH5865	10
Pax-5	Rb	Pab	+					+								100 µl	GS1840	10
Pax-5, <i>Nushift</i>	Rb	Pab	+										GS			17 Rxns	GS0650	10
Paxillin	Ms IgG1	5H11	+	+				+	+			+	IF			500 µl	N81610	23
Paxillin, <i>Advanced</i> panel	Rb	Pab	+							+						2x100µl	GR3980	22
Paxillin, phospho Ser 178 (BL854)	Rb	Pab		+				+								100 µg	GR5490	22
PBP, middle region	Rb	Pab	+	+				+	+	+						100 µg	GL7460	22-21
PBP, N-term	Rb	Pab	+	+				+	+	+						100 µg	GL7450	22-21
PBR	Rb	Pab	+	+	+			+	+							100 µl	Q70290	3
Pbx-1	Rb	Pab	+					+								100 µl	GS1610	10
PCK1, C-term	Rb	Pab	+	+				+	+	+						100 µg	GL7480	18-21-12
PCK1, N-term	Rb	Pab	+	+				+	+	+						100 µg	GL7470	18-21-12
PCK2, C-term	Rb	Pab	+					+	+	+						100 µg	GL7500	18-21-12
PCK2, N-term	Rb	Pab	+					+	+	+						100 µg	GL7490	18-21-12
PCNA	Rb	Pab	+					+	+							500 µl	GH6232	3
PCNA	Ms IgG2a	PC10	+	+	+	Ye		+	+		+	+				500 µl	362461	3
PCNA	Rb	Pab	+					+				+				100 µg	GR6180	10
PCNA	Rb	Pab	+					+				+				100 µg	GR6200	10
PCPTP1, N-term	Rb	Pab	+									+				100 µg	GL8680	22-21-12-20
pCREB	Ms IgG1	116C632.3	+					+								100 µg	GS2680	22
PCTAIRE2	Ms IgG1	PC1	+					+								500 µl	N81680	3
PCTAIRE2	Ms IgG1	PC2	+					+								500 µl	N81700	3
PCTK1, C-term	Rb	Pab	+					+	+	+						100 µg	GL3860	22-21-12
PCTK2, N-term	Rb	Pab	+					+	+	+						100 µg	GL3870	22-21-12
PCTK3, N-term	Rb	Pab	+					+	+	+						100 µg	GL3880	22-21-12
PDAP1, C-term	Rb	Pab	+					+	+							100 µg	GL1650	22
PDGF	Rb	Pab	+	+				+	+				IF			500 µl	GH6094	9
PDGF Receptor	Sh	Pab						+								250 µg	P60290	9
PDGF Receptor	Sh	Pab	+					+	+			+				250 µg	O15770	9
PDGFA, N-term	Rb	Pab	+					+	+							100 µg	GK6030	9
PDGF-AA	Rb	Pab														500 µg	U72110	9
PDGF-AA	Rb	Pab	+					+	+				Neut			100 µg	O13200	9
PDGF-AA	Rb	Pab	+					+	+				Neut			50 µg	AR5450	9
PDGF-AA -Biotin	Rb	Pab	+					+	+							25 µg	AR3510	9
PDGFB, C-term	Rb	Pab	+					+	+							100 µg	GK6040	9
PDGF-BB	Rb	Pab	+					+	+				Neut			100 µg	O13210	9
PDGF-BB	Rb	Pab	+					+	+				Neut			50 µg	AR5460	9
PDGF-BB -Biotin	Rb	Pab	+					+	+							25 µg	AR3520	9
PDGFC, N-term	Rb	Pab	+							+						100 µg	GK6050	9
PDGFR alpha	Rb	Pab	+	+				+	+			+				500 µl	BF1971	9
PDGFR alpha	Rb	Pab	+	+	+			+								500 µl	V13010	9-22
PDGFR beta	Rb	Pab	+	+				+								500 µl	BF1961	9
PDGFR beta	Rb	Pab	+	+				+								500 µl	V13090	9-22
PDGFRA, C-term	Rb	Pab	+					+	+							100 µg	GL4550	22-21-12
PDGFRB, C-term L1089	Rb	Pab	+					+	+							100 µg	GL4570	22-21-12
PDGFRB, C-term P1028	Rb	Pab	+									+				100 µg	GL4580	22-21-12

Research Area Code

- | | | | | |
|---|--|---|---|--|
| 1 Allergens | 6 Cardiac Markers and related molecules | 11 Drugs and resistance | 16 Lipides/Apolipo/Lipoproteins | 20 Neuroscience |
| 2 Anglo/Histogenesis | 7 CD Markers | 12 Enzymes & enzymes inhibitors | 17 Membrane channels and transport proteins | 21 Post translational modifications |
| 3 Apoptosis/cell cycle | 8 Cell adhesion | 13 Hematopoietic markers | 18 Metabolism/Energy pathways | 22 Signal transduction/Stress response |
| 4 Blood and serum proteins | 9 Cytokine/Chemokine/Growth factors | 14 Hormones/Steroids | 19 Miscellaneous | 23 Structural proteins |
| 5 Cancer, Hypoxia and related molecules | 10 DNA Replication/Transcription/Repairs | 15 Infectious agents related molecules & resistance | | 24 Tags and Markers |

Primary Antibodies & Ags

Alphabetical Listing

Name	Host - Isotype	Clone	Species Reactivity				Application						Size	Cat.#	Research Area
			Hu	Ms	Rt	Other	WB	IHC	EL	FC	IP	Other			
PDGFRB, N-term	Rb	Pab	+					+	+				100 µg	GL4560	22-21-12
PDGFRL, C-term	Rb	Pab	+					+	+				100 µg	GL4590	22
PDK-1	Rb	Pab						+	+				100 µg	AL9000	23
PDK1, N-term	Rb	Pab	+	+				+	+				100 µg	GL2370	18-21-12
PDK2, C-term	Rb	Pab	+					+	+	+			100 µg	GL2380	18-21-12
PDK3, N-term	Rb	Pab	+	+				+	+				100 µg	GL2390	18-21-12
PDK4, C-term	Rb	Pab	+	+				+	+				100 µg	GL2400	18-21-12
PDPK1, C-term	Rb	Pab	+	+				+	+	+			100 µg	GL2420	18-21-12
PDPK1, N-term	Rb	Pab	+					+	+	+			100 µg	GL2410	18-21-12
Pds1	Ms IgG2a	DCS-280	+					+	+				500 µl	S39340	
PDX1, C-term	Rb	Pab	+							+			100 µg	GK6460	18-12
PDX1, N-term	Rb	Pab	+					+	+				100 µg	GK6450	18-12
PECAM, see CD31															
PELP1 / MNAR	Rb	Pab	+					+					100 µg	GR5300	10
PELP1 / MNAR	Rb	Pab	+					+					100 µl	GP7220	10
PEN2	Rb	Pab	+					+			+		100 µl	BD9310	18-22-20
PEN2, C-term	Rb	Pab	+							+			100 µg	GL1730	18-22-20
PEN2, middle region	Rb	Pab	+							+			100 µg	GL1720	18-22-20
PEN2, N-term	Rb	Pab	+							+			100 µg	GL1710	18-22-20
Penicillin	Ms IgG1	M191324					+						1 mg	P46770	11-15
Penicillin	Ms IgG1	Pen9									+		1 mg	O08860	11-15
Penicillin	Ms IgG1	704											1 mg	N93570	11-15
Penicillin & Derivatives	Ms IgG1	CH-2011									+		1 ml	472710	11-15
Penicillinase	Rb	Pab									+		1 ml	P60220	12-15
Penicillinase	Rb	Pab								+		IEP	50 mg	N91920	12-15
Penicillinase	Rb	Pab								+		IEP	2 ml	O25430	12-15
Penicillinase -HRP	Rb	Pab								+		IEP	20 mg	N97790	12-15
Pentraxin 3	Rb	Pab	(+)	+				+	+				100 µg	GU9580	6
Pentraxin 3	Gt	Pab	+					+	+				100 µg	GU9590	6
PEP Carboxylase	Rb	Pab								+			50 mg	O02500	12
PEP Carboxylase	Rb	Pab								+		IEP	2 ml	O26590	12
PEP Carboxylase -HRP	Rb	Pab								+		IEP	20 mg	O05910	12
Pepsin, Pig Stomach	Gt	Pab					Sw			+		IEP	50 mg	N91930	12
Pepsin, Pig Stomach	Gt	Pab					Sw			+	+		2 ml	O25440	12
Pepsin, Pig Stomach -HRP	Gt	Pab					Sw			+		IEP	20 mg	N98470	12
Pepsinogen II	Sh	Pab	+					+				DD	1 ml	N98720	12
Peptide Histidine-Methionine	Rb	Pab	+					+	+				100 µg	GU9600	17
Per1	Ck	Pab	(+)	+				+	+				100 µl	E89830	6
Per1, human C-term peptide	Rb	Pab	+	+				+	+	+			100 µg	E84470	6
Per1, mouse Internal peptide	Rb	Pab	(+)	+				+	+	+			100 µg	G03320	6
Per1, drosophila	Ck	Pab					Dr	+	+				100 µl	D13420	10
Per2	Rb	Pab	+	(+)				+					100 µl	AW8980	6
Per2, C-term	Rb	Pab	+					+	+				100 µg	U12290	6
Per2, N-term	Gt	Pab	+					+	+				100 µg	I08120	6
Per3, C-term	Rb	Pab	+					+	+				100 µg	I54360	6
Per3, C-term	Rb	Pab	+					+	+				100 µg	E96960	6
Perforin	Ms IgG2b	dG9	+					-	+	+		IF	500 µl	N81740	3
Perforin	Ms IgG1	5B10	+							+			500 µl	V06480	3
Peripherin	Ms IgG1	8G2	+	+	+	M		+	+				500 µl	AW5940	23-20
Peripherin	Ms IgG1	7C5				Ck+		+	+				200 µl	AW5941	23-20
Peripherin	Rb	Pab	+	+	+	M		+				IF	50 µl	AW7580	23-20
Peripherin Per-56	Rb	Pab	(+)	+				+	+				50 µl	AZ6090	23-20
Peripherin Per-61	Rb	Pab	(+)	+				+	+				50 µl	AZ6080	23-20
PERK, C-term	Rb	Pab	+					+	+				100 µg	GL6920	18-21-12
Peropsin	Rb	Pab	+					+					50 µl	FS9060	22

Species legend : Bd : Bird, Bv : Bovine, Ck : Chicken or Hen, Ct : Feline, Dg : Canine, Dr : Drosophila, Eq : Equine, F : Fish, Fr : Frog, Ft : Ferret, GP : Guinea Pig, Gt : Goat, Hm : Hamster, Hrs : Horse, Hu : Human, Ko : Kangaroo, M : Mammalian, Mi : Mink, Mk : Monkey, Ms : Mouse, Ne : Nematode, Op : Opossum, Pl : plant, Ql : Quail, Rb : Rabbit, Rt : Rat, Sh : Sheep, Sw : Porcine, Sy Hm : Syrian Hamster, Xe : Xenopus, Ye : Yeast

Size : Size indicated in bold means several sizes and formats are available (sample size or bigger size, unpurified neat serum, without azide or BSA, positive control...) : contact us for more detail

Application legend : Bk : Blocking, CD : Cell detection, Ch : ChIP, COA : ELISA capture, Db : Dot Blot, DD : Double diffusion, EL : ELISA detection, EM : Electron Microscopy, FCM : Flow Cytometry, FIA : FluoroImmunoAssay, GS : Gel (super)shift, HA : Hemagglutination/Latex agglutination, ICC : ImmunoCytoChemistry, IEP : Immunoelectrophoresis, IF : Immunofluorescence, IHC : ImmunoHistoChemistry, IP : Immunoprecipitation/Immunopurification, ISH : In Situ Hybridization, KA : Kinase assay, LF : Lateral flow, Neph : Nephelometry, Neut : Neutralizing, RIA : RadioImmunoassay, RID : Radial Immunodiffusion, SB : Southern Blot, TIA : Turbidimetry

Name : Prefixes as 'alpha', 'D1-', 'Pro'-... are not considered for the alphanumerical sorting, and often included after the main name.

(+) : Expected species cross-reactivities based on immunogen sequence homology _ Expected application suitability.

Primary Antibodies & Ags

Alphabetical Listing

Name	Host - Isotype	Clone	Species Reactivity				Application						Size	Cat.#	Research Area		
			Hu	Ms	Rt	Other	WB	IHC	ICC	EL	FC	IP				Other	
PERP	Rb	Pab		+	(+)					+					100 µg	AW7590	3
Pescadillo	Rb	Pab		+						+	+				100 µg	AL0970	19
Pescadillo	Rb	Pab		+									-	IF	100 µl	AW8680	19
PF-4	Rb	Pab		+										Neut	50 µg	AR5470	9
PF-4 -Biotin	Rb	Pab		+											25 µg	AR3530	9
PFKFB1, N-term	Rb	Pab		+	+										100 µg	GL8260	18-21-12
PFKFB2, C-term	Rb	Pab		+											100 µg	GL8250	18-21-12
PFKFB2, middle region	Rb	Pab		+											100 µg	GL8270	18-21-12
PFKFB2, N-term	Rb	Pab		+											100 µg	GL8240	18-21-12
PFKFB3, C-term	Rb	Pab		+	+										100 µg	GL8230	18-21-12
PFKFB3, N-term	Rb	Pab		+	+										100 µg	GL8220	18-21-12-5
PFKFB4, middle region	Rb	Pab		+	+										100 µg	GL8380	18-21-12-5
PFKL, C-term	Rb	Pab		+											100 µg	GL8060	18-21-12
PFKL, N-term	Rb	Pab		+											100 µg	GL8050	18-21-12
PFKM, C-term	Rb	Pab		+											100 µg	GL8080	18-21-12
PFKM, N-term	Rb	Pab		+											100 µg	GL8070	18-21-12
PFKP, C-term	Rb	Pab		+											100 µg	GL8040	18-21-12
PFKP, N-term	Rb	Pab		+											100 µg	GL8030	18-21-12
PFTK1, N-term	Rb	Pab		+											100 µg	GL3890	22-21-12-20
PFM1, see PRDM4																	
PFM2, see PRDM5																	
PFM3, see PRDM6																	
PFM5, see PRDM8																	
PFM11, see PRDM14																	
PGC-1, <i>Advanced</i> panel	Rb	Pab		+											2x100µl	GR5140	10
P-Glycoprotein, see p170																	
P-Glycoprotein	Ms IgG2a	UIC2		+											100 tests	O23250	5
P-Glycoprotein -PE	Ms IgG2a	UIC2		+										IF	100 tests	S33490	5
PGP-1, see CD44																	
PGP 9.5	Ms IgG2a	13C4		+	+	GP									200 µl	GG2710	20
PGP 9.5	Ms IgG1	31A3		+	+										200 µl	GG2720	20
PGP9.5	Rb	Pab		+											500 µl	GH5920	20
PHAS-I	Rb	Pab		+	+	+									500 µl	S47800	22
PHAS-II	Rb	Pab		+											500 µl	GH5432	22
PHD1	Rb	Pab		+	+										100 µg	AL6590	10
PHD2	Rb	Pab		+											100 µg	AL6600	10
PHD3	Rb	Pab		+	+										100 µg	AL6610	10
PHD4	Rb	Pab		+											100 µg	GR4010	10
Phencyclidine	Ms IgG1k	M9903239					+								1 mg	P46790	11
Phencyclidine	Gt	Pab					+								1 ml	P60240	11
Phencyclidine (PCP)	Ms IgG1	BDI970													1 mg	U63500	11
Phencyclidine -Colloidal Gold	Ms	M009082					+								10 ml	P42220	11
Phenobarbital	Ms IgG1	M4020510					+								1 mg	P46840	11
Phenobarbital	Rb	Pab					+								1 ml	P60250	11
Phenobarbital	Ms IgG1	F1#2G7A7													1 mg	N93580	11
Phenobarbital	Ms IgG1	F1#4A11B62													1 mg	N93590	11
Phenobarbital	Ms IgG1	F1#6A3G2													1 mg	N93600	11
Phenobarbital	Ms IgG1	404													1 ml	O11660	11
Phenobarbital	Ms IgG1	401													1 ml	O11670	11
Phenobarbital	Ms IgG1	402													1 ml	O11680	11
Phenobarbital	Ms IgG1	403													1 ml	O11690	11
Phenobarbital	Ms IgG1	405													1 ml	O11700	11
Phenobarbital (KLH)	Gt	Pab					+								1 ml	P60260	11
Phenytoin, see Dilantin																	
Phenytoin	Ms IgG1	302													1 ml	O11710	11

Research Area Code

- | | | | | |
|---|--|---|---|--|
| 1 Allergens | 6 Cardiac Markers and related molecules | 11 Drugs and resistance | 16 Lipides/Apolipo/Lipoproteins | 20 Neuroscience |
| 2 Anglo/Histogenesis | 7 CD Markers | 12 Enzymes & enzymes inhibitors | 17 Membrane channels and transport proteins | 21 Post translational modifications |
| 3 Apoptosis/cell cycle | 8 Cell adhesion | 13 Hematopoietic markers | 18 Metabolism/Energy pathways | 22 Signal transduction/Stress response |
| 4 Blood and serum proteins | 9 Cytokine/Chemokine/Growth factors | 14 Hormones/Steroids | 19 Miscellaneous | 23 Structural proteins |
| 5 Cancer, Hypoxia and related molecules | 10 DNA Replication/Transcription/Repairs | 15 Infectious agents related molecules & resistance | | 24 Tags and Markers |

Primary Antibodies & Ags

Alphabetical Listing

Name	Host - Isotype	Clone	Species Reactivity				Application					Size	Cat.#	Research Area
			Hu	Ms	Rt	Other	WB	IHC ICC	EL	FC	IP			
Phenytoin	Ms IgG1	303										1 mg	O13630	11
Phenytoin	Ms IgG1	304										1 mg	O13640	11
Phenytoin	Ms IgG1	305										1 mg	O13650	11
Phenytoin	Ms IgG1	301										1 mg	O13660	11
Phenytoin	Ms IgG1	302										1 mg	O13670	11
Phenytoin	Ms IgG1	303										1 ml	O11720	11
Phenytoin	Ms IgG1	304										1 ml	O11730	11
Phenytoin	Ms IgG1	305										1 ml	O11740	11
Phenytoin	Ms IgG1	301									+	1 ml	O11750	11
Phenytoin (Dilantin)	Ms IgG1	M26081				+						1 mg	P46870	11
PHEX	Rb	Pab	(+)	(+)	+		+	+				100 µg	E91550	18-20
PHF-2	Rb	Pab	+				+					100 µg	AW7600	20
PHF-9 (FANC-L), <i>Boot Camp</i>	Rb	Pab	(+)		(+)							3x100µl	GP7690	10-19
PHKG1, middle region	Rb	Pab	+				+	+	+			100 µg	GL2940	18-21-12
PHKG2, middle region	Rb	Pab	+					+	+			100 µg	GL2960	18-21-12
PHKG2, N-term	Rb	Pab	+	+			+	+	+			100 µg	GL2950	18-21-12
PHO1, N-term	Rb	Pab	+				+	+				100 µg	GK4730	12-3
PHO3, C-term	Rb	Pab	+				+	+				100 µg	GK4720	12-3
Phospho, pan	Ms IgG1	SPM101						+				500 µl	GH3250	21
Phospholipid transfer protein	Rb	Pab	(+)	(+)			+	+				200 µl	AW9250	16-17
Phosphoserine	Rb	Pab					+	+				100 µl	GU9620	21
Phosphoserine	Ms	Mab					+	+				100 µl	GU9630	21
Phosphoserine	Ms IgG1	BDI270					+	+	+			100 µg	AA0620	21
Phosphoserine	Ms IgM	BDI430					+	+	+			100 µg	AA0640	21
Phosphoserine	Ms IgM	BDI440					+	+	+			100 µg	AA0630	21
Phosphoserine	Ms IgM	BDI604					+	+	+			100 µg	AA0600	21
Phosphoserine	Ms IgM	BDI810					+	+	+			100 µg	AA0610	21
Phosphoserine	Ms IgM	BDI904					+	+	+			100 µg	AA0650	21
Phosphoserine, Set of 6 Mabs	Ms	SETSER					+	+	+			1 set	AL7330	21
Phosphothreonine	Ms IgG1	BDI101					+	+	+			100 µg	AA0570	21
Phosphothreonine	Ms IgM	BDI141					+	+	+			100 µg	AA0590	21
Phosphothreonine	Ms IgG1	BDI341					+	+	+			100 µg	AA0560	21
Phosphothreonine	Ms IgG1	18F6					+	+				100 µl	BM0340	21
Phosphothreonine	Rb	Pab					+	+				100 µl	GU9650	21
Phosphothreonine, Set of 3 Mabs	Ms	SETTHR					+	+	+			1 set	AL7310	21
Phosphotyrosine	Rb	Pab					+	+				100 µl	GU9640	21
Phosphotyrosine	Ms IgG1	SPM102					+					500 µl	BL8701	21
Phosphotyrosine	Ms IgG2b	PY20					+	+				250 µg	O07790	21
Phosphotyrosine	Ms IgG1	BDI230					+	+	+	+		100 µg	U95170	21
Phosphotyrosine	Ms IgG1	BDI460					+	+	+			100 µg	AA0540	21
Phosphotyrosine	Ms IgG1	BDI820					+	+	+			100 µg	AA0550	21
Phosphotyrosine	Ms IgG1	BDI890					+	+	+			100 µg	U95160	21
Phosphotyrosine	Ms IgG1	13F9					+	+				100 µl	U63690	21
Phosphotyrosine	Ms IgG2b	PY20					+	+		+	IF	500 µl	983682	21
Phosphotyrosine -Biotin	Ms IgG2b	PY20					+	+				250 µg	O13980	21
Phosphotyrosine -Biotin	Ms IgG1	BDI820					+	+	+			100 µg	AL8760	21
Phosphotyrosine -FITC	Ms IgG2b	PY20					+	+				250 µg	O13990	21
Phosphotyrosine, Set of 4 Mabs	Ms	SETTYR					+	+	+			1 set	AL7320	21
Photoreceptor-specific nuclear receptor	Rb	Pab	+	+				+				50 µl	FT5440	10
Photoreceptor-specific nuclear receptor	Rb	Pab	+	+				+				50 µl	FT5450	10
PI3K	Ms IgG1	8-2D-4D	+	+	+		+				IF	500 µl	N81820	22-21-12
PI3K	Rb	Pab	+		+	Mk	+					500 µl	S47340	22-21-12
PI3K	Rb	Pab	+	+	+	Bv,Hm+	+					500 µl	S47850	22-21-12
PI3KC2A, N-term	Rb	Pab	+	+			+	+				100 µg	GL6410	22-16-12-5
PI3KC2B, N-term	Rb	Pab	+				+	+				100 µg	GL6420	22-16-12-5

Species legend : Bd : Bird, Bv : Bovine, Ck : Chicken or Hen, Ct : Feline, Dg : Canine, Dr : Drosophila, Eq : Equine, F : Fish, Fr : Frog, Ft : Ferret, GP : Guinea Pig, Gi : Goat, Hm : Hamster, Hrs : Horse, Hu : Human, Ko : Kangaroo, M : Mammalian, Mi : Mink, Mk : Monkey, Ms : Mouse, Ne : Nematode, Op : Opossum, Pl : plant, Ql : Quail, Rb : Rabbit, Rt : Rat, Sh : Sheep, Sw : Porcine, Sy Hm : Syrian Hamster, Xe : Xenopus, Ye : Yeast

Size : Size indicated in bold means several sizes and formats are available (sample size or bigger size, unpurified neat serum, without azide or BSA, positive control...) : contact us for more detail

Application legend : Bk : Blocking, CD : Cell detection, Ch : ChIP, COA : ELISA capture, Db : Dot Blot, DD : Double diffusion, EL : ELISA detection, EM : Electron Microscopy, FCM : Flow Cytometry, FIA : FluoroImmunoAssay, GS : Gel (super)shift, HA : Hemagglutination/Latex agglutination, ICC : ImmunoCytoChemistry, IEP : Immunoelectrophoresis, IF : Immunofluorescence, IHC : ImmunoHistoChemistry, IP : Immunoprecipitation/Immunopurification, ISH : In Situ Hybridization, KA : Kinase assay, LF : Lateral flow, Neph : Nephelometry, Neut : Neutralizing, RIA : RadioImmunoassay, RID : Radial Immunodiffusion, SB : Southern Blot, TIA : Turbidimetry

Name : Prefixes as 'alpha', 'D1-', 'Pro'-... are not considered for the alphanumerical sorting, and often included after the main name.

(+) : Expected species cross-reactivities based on immunogen sequence homology _ Expected application suitability.

Primary Antibodies & Ags

Alphabetical Listing

Name	Host - Isotype	Clone	Species Reactivity				Application							Size	Cat.#	Research Area
			Hu	Ms	Rt	Other	WB	IHC	EL	FC	IP	Other				
PI3KC2G, C-term	Rb	Pab	+					+	+					100 µg	GL6440	22-16-12-5
PI3KC2G, N-term	Rb	Pab	+					+	+					100 µg	GL6430	22-16-12-5
PI3KC3, C-term	Rb	Pab	+					+	+					100 µg	GL6460	22-16-12-5
PI3KC3, N-term	Rb	Pab	+					+	+	+				100 µg	GL6450	22-16-12-5
PI3KCA, C-term	Rb	Pab	+					+	+	+				100 µg	GL6480	22-16-12-5
PI3KCA, N-term	Rb	Pab	+					+	+					100 µg	GL6470	22-16-12-5
PI3KCB, C-term	Rb	Pab	+					+	+					100 µg	GL6500	22-16-12-5
PI3KCB, N-term	Rb	Pab	+					+	+					100 µg	GL6490	22-16-12-5
PI3KCD, C-term	Rb	Pab	+					+	+	+				100 µg	GL6510	22-16-12-5
PI3KCG, C-term	Rb	Pab	+					+	+					100 µg	GL6530	22-16-12-5
PI3KCG, N-term	Rb	Pab	+	+				+	+	+				100 µg	GL6520	22-16-12-5
PI3KR1, N-term	Rb	Pab	+					+	+	+				100 µg	GL6540	22-16-12
PI3KR2, C-term	Rb	Pab	+					+	+	+				100 µg	GL6560	22-16-12
PI3KR2, N-term	Rb	Pab	+					+	+					100 µg	GL6550	22-16-12
PI3KR3, C-term	Rb	Pab	+	+				+	+					100 µg	GL6570	22-16-12
PI3KR4, C-term	Rb	Pab	+					+	+	+				100 µg	GL6590	22-16-12
PI3KR4, N-term	Rb	Pab	+					+	+	+				100 µg	GL6580	22-16-12
PI4K II beta, C-term	Rb	Pab	+					+	+	+				100 µg	GL6660	22-16-12
PI4K II beta, N-term	Rb	Pab	+					+	+	+				100 µg	GL6650	22-16-12
PI4K II, N-term	Rb	Pab	+					+	+	+				100 µg	GL6640	22-16-12
PI4KCA, C-term	Rb	Pab	+					+	+					100 µg	GL6610	22-16-12
PI4KCA, N-term	Rb	Pab	+					+	+	+				100 µg	GL6600	22-16-12
PI4KCB, C-term	Rb	Pab	+					+	+					100 µg	GL6630	22-16-12
PI4KCB, N-term	Rb	Pab	+					+	+	+				100 µg	GL6620	22-16-12
PI5K, C-term	Rb	Pab	+					+	+	+				100 µg	GL6670	22-16-12
PIAS1, C-term	Rb	Pab	+					+	+	+				100 µg	GK4030	10
PIAS1, N-term	Rb	Pab	+					+	+	+				100 µg	GK4020	10
PIAS3, C-term	Rb	Pab	+					+	+	+				100 µg	GK4050	10
PIAS3, N-term	Rb	Pab	+					+	+	+				100 µg	GK4040	10
PIASny, middle region	Rb	Pab	+					+	+					100 µg	GK4220	10-21
PIASny, N-term	Rb	Pab	+					+	+						GK4210	10-21
PIASx1, N-term	Rb	Pab	+					+	+	+				100 µg	GK4080	10-21
PIASx1/2, C-term	Rb	Pab	+					+	+	+				100 µg	GK4070	10-21
PIASx1/2, N-term	Rb	Pab	+					+	+	+				100 µg	GK4060	10-21
PIASy1, C-term	Rb	Pab	+					+	+	+				100 µg	GK4100	10-21
PIASy1, N-term	Rb	Pab	+					+	+	+				100 µg	GK4090	10-21
PIASz, N-term	Rb	Pab	+					+	+	+				100 µg	GK4110	10-21
PIASz1, C-term	Rb	Pab	+					+	+	+				100 µg	GK4120	10-21
Pichia pastoris	Rb	Pab						+					IF	1 ml	U63980	15
PIM1	Rb	Pab	+					+				+		100 µg	BI0030	22-21-12
PIM1, C-term	Rb	Pab	+					+	+	+				100 µg	GL5870	22-21-12
PIM2, C-term	Rb	Pab	+					+	+	+				100 µg	GL5880	22-21-12
PIMT	Rb	Pab						+						100 µg	AW7770	22-21-12
PIP5K1A, N-term	Rb	Pab	+					+	+					100 µg	GL6680	22-16-12
PIP5K1B, N-term	Rb	Pab	+					+	+	+				100 µg	GL6690	22-16-12
PIP5K1G, C-term	Rb	Pab	+					+	+	+				100 µg	GL6710	22-16-12
PIP5K1G, N-term	Rb	Pab	+					+	+	+				100 µg	GL6700	22-16-12
PIP5K2A, C-term	Rb	Pab	+					+	+	+				100 µg	GL6730	22-16-12
PIP5K2A, N-term	Rb	Pab	+	+				+	+	+				100 µg	GL6720	22-16-12
PIP5K2B, C-term	Rb	Pab	+					+	+	+				100 µg	GL6750	22-16-12
PIP5K2B, N-term	Rb	Pab	+					+	+					100 µg	GL6740	22-16-12
PIP5K2G, C-term	Rb	Pab	+					+	+	+				100 µg	GL6760	22-16-12
Pirh2	Rb	Pab	+	+				+						100 µg	BB3930	10
Pirimiphos	Rb	Pab								+				1 ml	BI8750	11
Pirimiphos	Ck	Pab								+				1 ml	BI8760	11

Immunologicals

A.186

interchim

Research Area Code

- | | | | | |
|---|--|---|---|--|
| 1 Allergens | 6 Cardiac Markers and related molecules | 11 Drugs and resistance | 16 Lipides/Apolipo/Lipoproteins | 20 Neuroscience |
| 2 Anglo/Histogenesis | 7 CD Markers | 12 Enzymes & enzymes inhibitors | 17 Membrane channels and transport proteins | 21 Post translational modifications |
| 3 Apoptosis/cell cycle | 8 Cell adhesion | 13 Hematopoietic markers | 18 Metabolism/Energy pathways | 22 Signal transduction/Stress response |
| 4 Blood and serum proteins | 9 Cytokine/Chemokine/Growth factors | 14 Hormones/Steroids | 19 Miscellaneous | 23 Structural proteins |
| 5 Cancer, Hypoxia and related molecules | 10 DNA Replication/Transcription/Repairs | 15 Infectious agents related molecules & resistance | | 24 Tags and Markers |

Primary Antibodies & Ags

Alphabetical Listing

Name	Host - Isotype	Clone	Species Reactivity				Application						Size	Cat.#	Research Area	
			Hu	Ms	Rt	Other	WB	IHC	ICC	EL	FC	IP				Other
Pit-1	Rb	Pab		+				+	+					100 µg	E83650	17
Pit-1	Rb	Pab	+		+			+						100 µl	GS1790	10
Pit-1, <i>Nushift</i>	Rb	Pab	+	+	+								GS	17 Rxns	GS0900	10
Pit-21	Rb	Pab	+	(+)	+	Hm		+	+					100 µg	E96600	17
PJA, middle region	Rb	Pab	+					+	+					100 µg	GK6830	18-21-12
PKA, catalytic subunit	Ms IgG2a	4B12	+						+					1 mg	GG2740	3-22-21-12
PKA, catalytic subunit	Ms IgG2b	1G3	+						+					1 mg	GG2730	3-22-21-12
PKA, phosphopeptide substrate	Ms IgG1	BDI251	+						+					100 µg	AL8680	3-22-21-12
PKA/C alpha/beta, N-term	Rb	Pab	+	+				+	+	+				100 µg	GL2120	22-21-12
PKA/C gamma, N-term	Rb	Pab	+					+	+					100 µg	GL2130	22-21-12
PKB, C-term	Ms IgG1	BDI048	+					+	+					100 µg	AL8640	3-22-21-12
PKB, dephospho-Ser 473	Ms IgG1	BDI111	+					+	+					100 µg	AL8670	3-22-21-12
PKB, pS 473	Ms IgG1	BDI610	+					+	+					100 µg	AL8750	3-22-21-12
PKC	Ms IgG2a	MC5	+					+	+					250 µg	O07800	3-22-21-12
PKC alpha, C-term	Rb	Pab	+					+	+	+				100 µg	GL2140	22-21-12
PKC beta1/2, C-term	Rb	Pab	+					+	+	+				100 µg	GL2150	22-21-12
PKC beta2, C-term	Rb	Pab	+	+	+	Mk		+	+	+				100 µg	GL2160	22-21-12
PKC -Biotin	Ms IgG2a	MC5	+					+	+					250 µg	O14000	22-21-12
PKC delta, N-term	Rb	Pab	+					+	+	+				100 µg	GL2170	22-21-12
PKC epsilon	Rb	Pab	+	+	+			+						500 µl	GH5784	22-21-12
PKC epsilon, N-term	Rb	Pab	+					+	+	+				100 µg	GL2180	22-21-12
PKC eta, N-term	Rb	Pab	+					+	+	+				100 µg	GL2190	22-21-12
PKC -FITC	Ms IgG2a	MC5	+	+	+	Bv		+	+				Bk	250 µg	O14010	22-21-12
PKC gamma, C-term	Rb	Pab	+	+				+	+	+				100 µg	GL2200	22-21-12
PKC iota, N-term	Rb	Pab	+					+	+	+				100 µg	GL2210	22-21-12
PKC mu, C-term	Rb	Pab	+					+	+	+				100 µg	GL2230	22-21-12
PKC mu, N-term	Rb	Pab	+					+	+	+				100 µg	GL2220	22-21-12
PKC nu	Rb	Pab	+					+	+	+				100 µg	GL2240	22-21-12
PKC nu, C-term	Rb	Pab	+	+				+	+	+				100 µg	GL2250	22-21-12
PKC theta, C-term	Rb	Pab	+					+	+	+				100 µg	GL2260	22-21-12
PKC zeta, N-term	Rb	Pab	+					+	+	+				100 µg	GL2270	22-21-12
PKC-D2, C-term	Rb	Pab	+	+				+	+	+				100 µg	GL5210	22-21-12
PKC-D2, middle region	Rb	Pab	+					+	+					100 µg	GL5200	22-21-12
PKD2	Rb	Pab	+					+						100 µg	AW7570	22-21-12
PKD2 (BL843)	Rb	Pab	+					+						100 µg	GR3420	22-21-12
PKD2, C-term	Rb	Pab	+					+	+	+				100 µg	GL5890	22-21-12
PKG, phosphopeptide substrate	Ms IgG1	BDI017	+						+					100 µg	AL8630	22-21-12
PKLR, C-term	Rb	Pab	+	+				+	+	+				100 µg	GL2440	21-12
PKLR, N-term	Rb	Pab	+	+				+	+	+				100 µg	GL2430	21-12
PKM2, C-term	Rb	Pab	+					+	+	+				100 µg	GL2450	18-21-12-15
PKN beta, C-term	Rb	Pab	+					+	+	+				100 µg	GL5900	22-21-12
PKN, C-term	Rb	Pab	+					+	+	+				100 µg	GL5930	22-21-12
PKN, N-term	Rb	Pab	+					+	+	+				100 µg	GL5910	22-21-12
PKR1, N-term	Rb	Pab	+					+	+	+				100 µg	GL7510	22-21-12
PKR2, N-term	Rb	Pab	+					+	+	+				100 µg	GL7520	22-21-12
Plakoglobin	Ms IgG2b	PG5.1	+	+	+	Bv,Ck+		+	+			+	IF	50 µg	O16640	3-22
Plakophilin 1	Ms IgG1	PP1-5C2	+					+	+	+				5 ml	GG2750	3-22
Plakophilin 2 (2a + 2b)	Ms IgG1	Mixed	+					+	+					5 ml	GG2760	3-22
PLAP	Rb	Pab	+					+						500 µl	V16010	12-24-5
PLAP	Ms IgG2a	8B6.18	+						+					500 µl	N81840	12-24-5
PLAP	Ms IgG2a	H7	+					-		+				500 µl	N81860	12-24-5
PLAP	Ms IgG1	8A9	+					+						500 µl	N81890	12-24-5
PLAP	Ms IgG1	PL05	+					+	-		+			500 µl	Q37680	12-24-5
Plasma Cell Marker	Ms IgG1	LIV3G11	+			Bv		+						500 µl	N81920	13

Species legend : Bd : Bird, Bv : Bovine, Ck : Chicken or Hen, Ct : Feline, Dg : Canine, Dr : Drosophila, Eq : Equine, F : Fish, Fr : Frog, Ft : Ferret, GP : Guinea Pig, Gi : Goat, Hm : Hamster, Hrs : Horse, Hu : Human, Ko : Kangaroo, M : Mammalian, Mi : Mink, Mk : Monkey, Ms : Mouse, Ne : Nematode, Op : Opossum, Pl : plant, Ql : Quail, Rb : Rabbit, Rt : Rat, Sh : Sheep, Sw : Porcine, Sy Hm : Syrian Hamster, Xe : Xenopus, Ye : Yeast

Size : Size indicated in bold means several sizes and formats are available (sample size or bigger size, unpurified neat serum, without azide or BSA, positive control...) : contact us for more detail

Application legend : Bk : Blocking, CD : Cell detection, Ch : ChIP, COA : ELISA capture, Db : Dot Blot, DD : Double diffusion, EL : ELISA detection, EM : Electron Microscopy, FCM : Flow Cytometry, FIA : FluoroImmunoAssay, GS : Gel (super)shift, HA : Hemagglutination/Latex agglutination, ICC : ImmunoCytoChemistry, IEP : Immunoelectrophoresis, IF : Immunofluorescence, IHC : ImmunoHistoChemistry, IP : Immunoprecipitation/Immunopurification, ISH : In Situ Hybridization, KA : Kinase assay, LF : Lateral flow, Neph : Nephelometry, Neut : Neutralizing, RIA : RadioImmunoassay, RID : Radial Immunodiffusion, SB : Southern Blot, TIA : Turbidimetry

Name : Prefixes as 'alpha', 'D1-', 'Pro',... are not considered for the alphanumerical sorting, and often included after the main name.

(+) : Expected species cross-reactivities based on immunogen sequence homology _ Expected application suitability.

Primary Antibodies & Ags

Alphabetical Listing

Name	Host - Isotype	Clone	Species Reactivity				Application						Size	Cat.#	Research Area	
			Hu	Ms	Rt	Other	WB	IHC	ICC	EL	FC	IP				Other
Plasma Membrane Ca-ATPase	Rb	Pab	+	+	+								Bk	100 µg	D11800	12
Plasma Membrane Ca-ATPase	Ms IgG2a	Mab	+	+	+	+	+	+	+					100 µl	B28340	12
Plasminogen	Rb	Pab												1 ml	P60280	2-4
Plasminogen	Ms IgG2b	4D2	+					+	+					1 mg	O09750	2-4
Plasminogen	Ms IgG1	5H3	+					+	+					1 mg	O09760	2-4
Plasminogen	Ms IgG2a	9E7	+					+	+					1 mg	O09770	2-4
Plasminogen	Gt	Pab	+					+	+		+			1 mg	O25770	2-4
Plasminogen	Sh	Pab			+			+	+					1 mg	AL8200	2-4
Plasminogen	Ms IgG1	PA	+										RIA	1 mg	O09780	2-4
Plasminogen	Ms IgG1	HPG	+					+	+					500 µg	AL5850	2-4
Plasminogen	Ms IgG1	8F11	+					+	+					1 mg	GG2780	2-4
Plasminogen	Ms IgG1	8E7	+					+	+					1 mg	GG2770	2-4
Plasminogen	Ms IgG1	SBF1	+					+						500 µl	N81970	2-4
Plasminogen Activator Inhibitor 1	Rb	Pab	+					+	+	+				1 mg	BM0360	2
Plasminogen Activator Inhibitor 1	Ms IgG	3A120	+					+						1 mg	BM0370	2
Plasminogen Activator Inhibitor 1	Ms IgG	3E529	+							+				1 mg	BM0380	2
Plasminogen Activator Inhibitor 2	Ms IgG2a	M5082321	+											500 µg	P46900	2
Plasminogen protein	Ms IgG1k	Mab	+					+	+					100 µg	GU9660	2-4
Plasminogen/Angiostatin	Ms IgG1	K4	+					+	+					500 µg	AL7240	2-4
Plasminogen/Angiostatin	Ms IgM	K1-3	+					+	+					500 µg	AL6920	2-4
Plasminogen/Angiostatin	Ms IgG1	K1-4	+					+	+					500 µg	AL7230	2-4
Plasmodium falciparum	Ms IgG1	BDI400						+	+			Db,LF		1 mg	Q54550	15
Plasmodium falciparum	Ms IgM	BDI504						+	+			Db,LL		1 mg	Q54610	15
Plasmodium falciparum (Malaria)	Ms IgG1	M02022021						+	+					1 mg	U71700	15
Plasmodium vivax (Malaria)	Rb	Pab							+					1 ml	P60500	15
Platelet Activating Receptor Homolog	Rb	Pab	+						+					50 µl	FS9230	22
Platelet Activating Receptor Homolog	Rb	Pab	+	+					+					50 µl	FS9220	22
Platelet Factor IV	Rb	Pab	+					+	+			Neut		100 µg	O13220	4
PLAU, C-term	Rb	Pab	+					+	+					100 µg	GL8510	18-4-12
PLAU, N-term	Rb	Pab	+	+				+	+	+				100 µg	GL8500	18-4-12
PLAUR, C-term	Rb	Pab	+					+	+					100 µg	GL8410	22-4-12
PLAUR, middle region	Rb	Pab	+					+	+					100 µg	GL8420	22-4-12
PLC gamma 1	Rb	Pab	+		+	Bv		+			+			500 µl	S47440	22
PLIC1, middle region	Rb	Pab	+					+	+	+				100 µg	GK8320	18-21-12
PLIC1, N-term	Rb	Pab	+	+				+	+	+				100 µg	GK8310	18-21-12
PLK, C-term	Rb	Pab	+					+	+	+				100 µg	GL5920	22-21-12
PLK1	Rb	Pab	+					+			+			100 µg	GR5990	22-21-10
PLK1	Rb	Pab	+					+	+		+			100 µg	GR4810	22-21-10
PLK1	Rb	Pab	+					+			+			100 µg	GR5960	22-21-10
PLM	Ms IgG1	Mab	+					+	+					100 µg	GK2370	17
PML Gene Product	Ms IgG1	PG-M3	+					+						500 µl	V05070	5
PML, Sumoylation site	Rb	Pab	+					+	+					100 µg	GK9240	17-21-5
PML, Sumoylation site	Rb	Pab	+					+	+					100 µg	GK9250	17-21-5
PMP22	Rb	Pab	+					+						500 µl	GH5823	20
PMP-22	Ms IgM	PMP-22	+					+	+					500 µl	Q37770	20
PMS2	Rb	Pab	+					+			+			400 µl	GP8320	10
PMS2	Rb	Pab	+					+			+			100 µg	AL0430	10
PMS2 -Agarose	Rb	Pab	+					+			+			100 µg	AL2050	10
PNCK, C-term	Rb	Pab	+					+	+					100 µg	GL2640	22-21-12
Pneumadin	Rb	Pab	+											20 µl	GG4190	19
Pneumocystis carinii	Ms IgG1	092												100 µg	N95440	15
Pneumocystis carinii	Ms IgM	3F6							+					500 µl	Q37820	15
Pneumocystis carinii -FITC	Ms IgG1	092						+	+			RIA		100 µg	O02410	15
PNK1	Rb	Pab	+								+			100 µg	GR3480	22-21-10
PNK1	Rb	Pab	+					+						100 µg	GR3470	22-21-10
PNK1	Rb	Pab	+					+						100 µg	GR5660	22-21-10
Podocalyxin	Rb	Pab	+	(+)	(+)			+	+					100 µg	GU9670	8
Podocalyxin	Gt	Pab	+					+	+					100 µg	GU9680	8
Podocalyxin	Gt	Pab			+			+	+	+				100 µg	GU9690	8
Podocin	Rb	Pab	+	+	(+)			+	+					100 µg	AZ3450	22
Poliovirus 1	Ms IgG1	BDI015										IF		100 µl	GG2810	15
Poliovirus 2	Ms IgG2a	BDI750										IF		100 µl	GG2820	15
Poliovirus 3	Ms IgG2a	BDI027										IF		100 µl	GG2830	15
Poly-ADP-ribose	Ms IgG3k	Mab						+	+					100 µg	GU9700	21

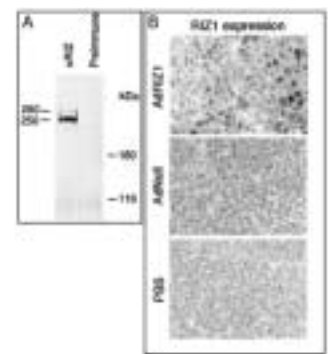
Name	Host - Isotype	Clone	Species Reactivity				Application						Size	Cat.#	Research Area	
			Hu	Ms	Rt	Other	WB	IHC	ICC	EL	FC	IP				Other
Polymerase beta	Ms	61	+				+							100 µg	FX8130	3
Post Meiotic Segregation Increased 2	Rb	Pab	+			(Ye)	+					+		100 µl	AW7780	3
PP2A-A	Rb	Pab	+											100 µl	N87320	20
PP2A-C	Rb	Pab	+					+	+					100 µl	N87340	20
PPAR alpha	Rb	Pab	+					+						100 µl	GS1770	22
PPAR gamma	Rb	Pab	+					+						100 µg	GS2630	22
PPAR gamma, <i>Nushift</i>	Rb	Pab	+	+								GS		17 Rxns	GS0770	22
PPM1D / WIP1	Ms	Mab	+					+	+				+	100 µl	AK2120	3
PPT1, C-term	Rb	Pab	+					+	+	+				100 µg	GK9740	18-12
PPT1, N-term	Rb	Pab	+	+				+	+	+				100 µg	GK9730	18-12
PPT2, C-term	Rb	Pab	+							+				100 µg	GK9760	18-12
PPT2, N-term	Rb	Pab	+					+	+					100 µg	GK9750	
PR/SET07, C-term	Rb	Pab	+					+	+	+				100 µg	GK3380	
PR/SET07, N-term	Rb	Pab	+	+				+	+	+				100 µg	GK3370	
PR3 (Proteinase 3)	Ms IgG1	MCPR3-2	+					+					IF	500 µl	Q37840	19
PRAC	Rb	Pab						+						100 µg	AW7790	5
PRDM1 / BLIMP1	Rb	Pab	+					+	+					100 µg	GK3520	10
PRDM2	Ms IgG1	33AT1045	+					+	+					100 µg	GK2470	10
PRDM2	Rb	Pab	+					+	+	+				100 µg	GK3550	10
PRDM2	Rb	Pab	+					+	+	+	+			100 µg	GK3540	10-5
PRDM2, N-term	Rb	Pab	+					+	+	+				100 µg	GK3530	10-5
PRDM3	Ms IgG1	Mab	+					+	+					100 µg	GK2450	10
PRDM3 / (MDS1/EV11)	Rb	Pab	+					+	+	+	+			100 µg	GK3560	10
PRDM4 / PFM1	Rb	Pab	+					+	+	+				100 µg	GK3570	10
PRDM5 / PFM2	Rb	Pab	+					+	+					100 µg	GK3580	10
PRDM6 / PFM3	Rb	Pab	+					+	+					100 µg	GK3590	10
PRDM8 / PFM5	Rb	Pab	+					+	+					100 µg	GK3600	10
PRDM9, C-term	Rb	Pab	+					+	+	+				100 µg	GK3610	10
PRDM10	Ms IgG1	Mab	+					+	+					100 µg	GK2460	10
PRDM10, N-term	Rb	Pab	+					+	+					100 µg	GK3620	10
PRDM11, C-term	Rb	Pab	+					+	+	+				100 µg	GK3640	10
PRDM11, N-term	Rb	Pab	+					+	+	+				100 µg	GK3630	10
PRDM12	Ms IgG1	Mab	+					+	+					100 µg	GK2480	10
PRDM12, N-term	Rb	Pab	+					+	+					100 µg	GK3650	10
PRDM13, C-term	Rb	Pab	+					+	+	+				100 µg	GK3670	10
PRDM13, N-term	Rb	Pab	+					+	+					100 µg	GK3660	10
PRDM14 / PFM11, C-term	Rb	Pab	+					+	+					100 µg	GK3690	10
PRDM14 / PFM11, N-term	Rb	Pab	+					+	+	+				100 µg	GK3680	10
PRDM15, C-term	Rb	Pab	+					+	+	+				100 µg	GK3710	10
PRDM15, N-term	Rb	Pab	+					+	+	+				100 µg	GK3700	10
PRDM16, N-term	Rb	Pab	+					+	+	+				100 µg	GK3720	10-5
PRDM17, N-term	Rb	Pab	+					+	+					100 µg	GK3730	10
Pre B-Cells	Rt IgG2a	BP-1		+				+		+	+			500 µg	O07940	7

PRDM2 (RIZ1)

- ◆ Specificity : PRDM2 (RIZ1)
- ◆ Catalog number : **GK3540**
- ◆ Host and isotype : Rabbit IgG
- ◆ Species reactivity : Human, Mouse and Rat
- ◆ Applications and suggested dilution :
 - ELISA 1:1 000
 - Western blotting 1:100~500
 - Immunoprecipitation 1µg/100µg cell lysate

Key References :

1. Muraosa, Y., et al., Eur. J. Biochem. 235(3):471-479 (1996).
 2. Buyse, I.M., et al., Proc. Natl. Acad. Sci. U.S.A. 92(10):4467-4471 (1995).
- Product Citations:** 1. Huang S. Nat Rev Cancer. 2002, 2(6):469-76.



A) Rat B50 brain tumor cell extracts were immunoprecipitated with RIZ1 antibody (cat# GK3540) or preimmune (ref.9).
 B) Immunohistochemical analysis of RIZ1 in adenovirus-transduced tumor cells. Established HCT116 xenograft tumors at day 2 after infection of AdRIZ1, Adnull, or buffer alone were processed for AdRIZ1 in situ detection (TUNEL) analysis (ref.10).

Primary Antibodies & Ags

Alphabetical Listing

Name	Host - Isotype	Clone	Species Reactivity				Application						Size	Cat.#	Research Area
			Hu	Ms	Rt	Other	WB	IHC	EL	FC	IP	Other			
Pre B-Cells -Biotin	Rt IgG2a	BP-1		+				+		+	+		500 µg	O17200	7
Pre B-Cells -FITC	Rt IgG2a	BP-1		+				+		+	+		500 µg	O20050	7
Pre B-Cells -PE	Rt IgG2a	BP-1		+				+		+	+		100 µg	N97660	7
Preadipocyte factor-1	Rb	Pab	+			(+)		+		+			100 µg	E78420	5
Preadipocyte factor-1	Rb	Pab	(+)	+	(+)	(Bv)		+		+			100 µg	U23320	5
Prealbumin	Gt	Pab											10 ml	P60310	4
Prealbumin	Gt	Pab		+									10 ml	N88330	4
Pregnanolone-3a Glucuronide	Ms IgG2b	M63259											0.5 ml	P46930	14
Pregnenolone	Rb	Pab											1000 tb	P60320	14
Pregnenolone-3, 17-OH	Rb	Pab											1000 tb	P60330	14
Pregnenolone-3, 17-OH	Sh	Pab											1000 tb	P60340	14
Prekallikrein, heavy chain	Ms IgG1	901	+					+		+			200 µg	O22130	12-5
Prepro Orexin A	Rb	Pab			+			+		+			100 µg	GU9710	20-22
Presenilin 1	Rb	Pab	+	+	+	Xe		+		+			100 µg	H32420	20-22
Presenilin 1	Rt	Mab	+	+	+			+		+			100 µl	C81320	20-22
Presenilin 1	Gt	Pab	+			+		+		+			100 µl	E81100	20-22
Presenilin 1	Rb	Pab	+					+		+			500 µl	GH5790	20-22
Presenilin 1 peptide	Gt	Pab	+					+		+	+		100 µl	P60350	20
Presenilin 1, N term	Gt	Pab	+					+		+	+		200 µl	S35310	20
Presenilin 2	Rb	Pab	+	+	+			+		+			100 µg	H64160	20-22
Presenilin 2 peptide	Gt	Pab	+					+		+	+		100 µl	P60360	20
Presenilin 2, N term	Gt	Pab	+					+		+			200 µl	S35320	20
Presenilin-1	Rb	Pab	+					+				+	100 µl	GG4200	20
Primidone	Gt	Pab				+							1 ml	P60380	11
Prion Protein	Ms IgG2a	WD3C7				Bv		+	+	+			1 mg	GG2840	20
Prion Protein	Ms IgG1	7D9						+	+	+			100 µl	U62840	20
Prion Protein	Ms IgG1	BD1115				Sh,Ct		+	+	+			100 µg	AL8520	20
Prion Protein (aa. 109-112)	Ms IgG2a	3F4						+	+	+		+	100 µl	U57610	20
Prion Protein (aa. 109-112) -Biotin	Ms IgG2a	3F4						+	+	+		+	100 µl	U57611	20
Prion PrP27-30, N-term	Gt	Pab	+					+	+	+			100 µl	P60390	20
Prion PrP27-30, N-term	Gt	Pab	+					+	+	+			200 µl	S35330	20
PRK2, C-term	Rb	Pab	+					+	+	+			100 µg	GL5940	22-21-12
PRKAB1, N-term	Rb	Pab	+	+				+	+	+			100 µg	GL2460	22-21-12
PRKAB2, N-term	Rb	Pab	+	+				+	+	+			100 µg	GL2470	22-21-12
PRKACB, N-term	Rb	Pab	+					+	+	+			100 µg	GL2480	22-21-12
PRKACB, N-term	Rb	Pab	+					+	+				100 µg	GL2490	22-21-12
PRKAG1, middle region	Rb	Pab	+	+				+	+	+			100 µg	GL2500	22-21-12
PRKAG2, N-term	Rb	Pab	+					+	+	+			100 µg	GL2510	18-21-12
PRKAG3, middle region	Rb	Pab	+	+				+	+	+			100 µg	GL2520	18-21-12
PRKAR1B, N-term	Rb	Pab	+	+				+	+	+			100 µg	GL2530	22-21-12
PRKAR2B, N-term	Rb	Pab	+	+				+	+				100 µg	GL2540	22-21-12
PRKDC, C-term	Rb	Pab	+					+	+				100 µg	GL2560	22-21-12
PRKDC, middle region	Rb	Pab	+					+	+				100 µg	GL2570	22-21-12
PRKDC, N-term	Rb	Pab	+					+	+				100 µg	GL2550	22-21-12
PRKR, C-term	Rb	Pab	+	+				+	+	+			100 µg	GL8340	22-21-12
PRKR, N-term	Rb	Pab	+	+				+	+	+			100 µg	GL8330	22-21-12
PRKWNK3, C-term	Rb	Pab	+					+	+				100 µg	GL2590	22-21-12
PRKWNK3, N-term	Rb	Pab	+					+	+				100 µg	GL2580	22-21-12
PRKWNK4, C-term	Rb	Pab	+					+	+				100 µg	GL2600	22-21-12
PRKWNK4, middle region	Rb	Pab	+					+	+				100 µg	GL2610	22-21-12
PRKX, C-term	Rb	Pab	+	+				+	+				100 µg	GL5950	22-21-12
PRMT1, C-term	Rb	Pab	+					+	+	+			100 µg	GK2600	18-21-12
PRMT1, N-term	Rb	Pab	+					+	+				100 µg	GK2590	18-21-12
PRMT2, N-term	Rb	Pab	+					+	+	+			100 µg	GK2610	18-21-12
PRMT2, C-term	Rb	Pab	+					+	+				100 µg	GK2620	18-21-12
PRMT3, N-term	Rb	Pab	+					+	+				100 µg	GK2630	18-21-12
PRMT3, C-term	Rb	Pab	+					+	+	+			100 µg	GK2640	18-21-12
PRMT4, C-term	Rb	Pab	+					+	+				100 µg	GK2650	18-21-12
PRMT5, N-term	Rb	Pab	+					+	+				100 µg	GK2660	18-21-12
PRMT5, C-term	Rb	Pab	+					+	+	+			100 µg	GK2670	18-21-12
Procainamide	Ms IgG1	M31013				+				+			1 mg	P46940	11
Procainamide	Gt	Pab				+							1 ml	U72080	11
Procainamide	Ms IgG1	704											1 ml	O11760	11
Procainamide	Ms IgG1	701											1 mg	O15360	11

Name	Host - Isotype	Clone	Species Reactivity				Application						Size	Cat.#	Research Area	
			Hu	Ms	Rt	Other	WB	IHC	EL	FC	IP	Other				
Procainamide	Ms IgG1	703												1 mg	O15370	11
Procainamide	Ms IgG1	703												1 ml	O11770	11
Procainamide	Ms IgG2a	708												1 ml	O11780	11
Procainamide	Ms IgG2b	706												1 ml	O11790	11
Procainamide	Ms IgG2b	706									+			1 mg	Q45050	11
Procainamide	Ms IgG2a	709									+			1 ml	O11800	11
Procainamide	Ms IgG2a	707									+			1 ml	O11810	11
Procainamide, N-Acetyl	Ms IgG1	M210311					+							1 mg	P46560	11
Procalcitonin	Ms IgG2a	42		+							+	+		1 mg	GG2990	14
Procalcitonin	Ms IgG2a	44D9		+							+	+		1 mg	BM0180	14
Procalcitonin	Ms IgG1	38F11		+							+	+		1 mg	GG2980	14
Procalcitonin/Calcitonin	Ms IgG1	13G11		+							+	+		1 mg	BM0730	14
Procalcitonin/Calcitonin	Ms IgG1	24B2		+							+	+		1 mg	GG3010	14
Procalcitonin/Calcitonin	Ms IgG1	14A2		+							+	+		1 mg	GG3020	14
Procalcitonin/Calcitonin	Ms IgG2b	16B5		+							+	+		1 mg	GG3030	14
Procalcitonin/Calcitonin	Ms IgG2a	13B9		+							+	+		1 mg	GG3000	14
Procalcitonin/Katacalcin	Ms IgG1	22A11		+							+	+		1 mg	GG3060	14
Procalcitonin/Katacalcin	Ms IgG1	14C12		+							+	+		1 mg	GG3040	14
Procalcitonin/Katacalcin	Ms IgG1	18B7		+							+	+		1 mg	GG3050	14
Profilin	Rb	Pab	+	+	+	Ck,Sw	+				-			100 µl	837931	23-19
Progesterone	Rb	Pab												1000 tb	P60410	14
Progesterone	Ms IgG1	018-48360		+							+			1 mg	P58860	14
Progesterone	Ms IgG1	2030									+		RIA	1 mg	N93640	14
Progesterone	Ms IgG2b	HPR0-2									+			1 mg	GG3070	14
Progesterone	Ms IgG2b	XM207									+			1 mg	AL7940	14
Progesterone	Ms IgG1	4P01									+		RIA	500 µl	N82030	14
Progesterone Receptor	Rb IgG	SP2		+							+	+		500 µl	V16900	14
Progesterone Receptor	Ms IgG2a	PR10A9										+		6 ml	O23020	14
Progesterone Receptor	Ms IgG2a	PR10A9		+								+		1 ml	O24390	14
Progesterone Receptor	Ms IgG2b	hPRa 1		+	-	-	Mk,Rb	+	+		+	+	IF	500 µl	N82060	14
Progesterone Receptor	Ms IgG1	hPRa 2		+			Bv,Ck+	+	+		+	+	IF	500 µl	N82130	14
Progesterone Receptor	Ms IgG1	hPRa 3		+			Mk,Hrs	+	+		+	+	IF	500 µl	N82170	14
Progesterone Receptor	Ms IgG1	hPRa 5		+	+	+	Sw,Mk	+	+		+	+	IF	500 µl	N82250	14
Progesterone Receptor	Ms IgG2b	hPRa 6		+			Bv,Ck+	+			+	+	IF	500 µl	N82290	14
Progesterone Receptor	Ms IgG1	hPRa 7		+	+	+	Mk	+	+		+	+	IF	500 µl	N82320	14
Progesterone Receptor	Ms IgG1	cocktail		+			Sw,Hrs+	+	+		+	+	IF	500 µl	900491	14
Progesterone Receptor	Ms IgG1	1A6		+							+			500 µl	N82390	14
Progesterone Receptor	Rb	Pab		+	+	+					+	+		500 µl	S43740	14
Progesterone Receptor	Rb	Pab		+							+	+		500 µl	V16630	14
Progesterone Receptor	Ms IgG1	PgR636		+							+			500 µl	V09100	14
Progesterone Receptor, phospho	Ms IgG1	1154		+							+	+	GS	500 µl	Q38150	14
Progesterone Receptor, phospho	Ms IgG1	608		+							+	-	GS	500 µl	Q38190	14
Progesterone Receptor, phospho(S190)	Ms IgG1	1154		+							+			100 µl	AW5240	22-14

Progesterone Receptor

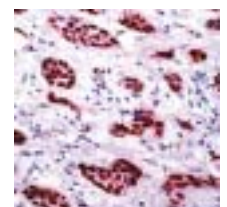
- ◆ Specificity : Progesterone Receptor
- ◆ Catalog number : **V16900**
- ◆ Host and isotype : Rabbit MONOCLONAL IgG,
Clone SP2 (see p. A240)
- ◆ Species reactivity : Human
- ◆ Applications and suggested dilution :
 - Immunohistology (formalin/paraffin)
 - 1:400 (10min., RT)
 - (1:100 with no pretreatment)
 - Western blotting
 - 1:25

Key References

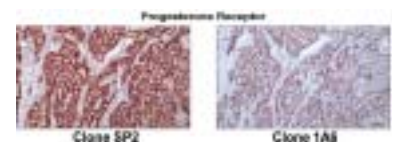
1. Novel rabbit monoclonal antibody to progesterone receptor (Clone SP2): No heat pretreatment but effective on paraffinembedded tissue. Huang Z., et al. (Submitted) Applied Immunohistochemistry and Molecular Morphology. 2. Cano, G., et. al. Estimation of Hormone Receptor Status in fine-Needle Aspirates and Paraffin-



Western blot analysis on Human Cells-30, using antibody V16900, clone SP2.



Formalin-fixed, paraffin-embedded human breast carcinoma stained with antibody V16900 using peroxidase-conjugate and AEC. Note nuclear staining of tumor cells.



Comparison with mouse monoclonal

Primary Antibodies & Ags

Alphabetical Listing

Name	Host - Isotype	Clone	Species Reactivity				Application						Size	Cat.#	Research Area		
			Hu	Ms	Rt	Other	WB	IHC	EL	FC	IP	Other					
Progesterone Receptor, phospho(S294)	Ms IgG1	608		+						+					100 µl	AW5250	22-14
Progesterone, 17-alpha-OH	Ms IgG3	HPRO-1									+				1 mg	GG0850	14
Progesterone, 17-alpha-OH	Ms IgG2b	HPRO-3									+				1 mg	GG0860	14
Progesterone-11	Ms IgG1	M642609													1 mg	P46950	14
Progesterone-3	Ms IgG1	M492711													1 mg	P46970	14
Progesterone-3, 17-OH	Rb	Pab													1000 tb	680150	14
Progesterone-3, 17-OH	Sh	Pab													2000 tb	P60430	14
Progesterone-7, 17-OH	Rb	Pab									+				1000 tb	P60440	14
Prohibitin	Ms IgG1	II-14-10	+	+	+	Sw,Ck	+	+				+	IF		500 µl	957701	3
Prohibitin	Rb	Pab	+	+	+	Sw,Ck	+	+				+	GS		500 µl	903830	3
Proinsulin	Ms IgG1	M32237	+							+	+	+			1 mg	P46980	14
Proinsulin	Ms IgG1	1G4	+			Bv,Sw				+					1 mg	O07170	14
Proinsulin	Ms IgG1	1D6	+								+		RIA		1 mg	S34490	14
Proinsulin	Ms IgG1	3A1	+							+	+		RIA		1 mg	O07180	14
Proinsulin	Ms IgG1	1G4	+							+					500 µl	V08560	14
Prokineticin Receptor 1	Rb	Pab		+											50 µl	FT3030	22-9
Prokineticin Receptor 2	Rb	Pab		+											50 µl	FT3020	22-9
Prokineticin Receptor 2	Rb	Pab		+											50 µl	FT3040	22-9
Prolactin	Rb	Pab		+											1 ml	P60450	14
Prolactin	Ms IgG1	M94192		+											1 mg	P47000	14
Prolactin	Gt	Pab		+								+			1 mg	P61920	14
Prolactin	Rb	Pab		+								+			1 mg	P61930	14
Prolactin	Gt	Pab		+											1 ml	P60460	14
Prolactin	Ms IgG1	SP108		+							+				500 µl	GH3762	14
Prolactin	Rb	Pab		+						+	+				1 mg	O18190	14
Prolactin	Ms IgG1	ME.122		+									EIA		1 mg	N89100	14
Prolactin	Ms IgG1	ME.121		+											1 mg	N89110	14
Prolactin	Ms IgG1	1135/21			+										200 µg	GG3200	14
Prolactin	Ms IgG2a	4404		+									RIA		1 mg	N93710	14
Prolactin	Ms IgG1	090-18111		+											1 mg	N46320	14
Prolactin	Ms IgG1	090-10145		+											1 mg	N46250	14
Prolactin	Ms IgG1	090-11710		+											1 mg	N46260	14
Prolactin	Ms IgG1	PRL02		+							+	+			500 µl	Q38380	14
Prolactin	Ms IgG1	PRL03		+							+	+			500 µl	Q38440	14
Prolactin -HRP	Ms	M94192		+											500 µg	P42230	14
Prolactin Receptor	Ms IgG1	B6.2		+							+	+			500 µl	Q38490	14
Prolactin Releasing Hormone Receptor	Rb	Pab		+	+	+									50 µl	FS8980	14-22
Prolactin Releasing Hormone Receptor	Rb	Pab		+	+	+									50 µl	FT3850	14-22
Proliferating Cell Nuclear Ag	Ms IgG2a	PC10		+									+		200 µg	O04890	3-22
Proliferating Cell Nuclear Ag	Ms IgG1	131-11964		+									+		100 µg	N94070	3-22
Proliferating Cell Nuclear Ag -Biotin	Ms IgG2a	PC10		+									+		200 µg	O10700	3-22
Proliferating Cell Nuclear Ag -FITC	Ms IgG2a	PC10		+									+		200 µg	O10710	3-22
Proline transporter	Rb	Pab		+	+						+	+			100 µg	E59370	17
Prolyl Hydroxylase 4	Rb	Pab		+	+						+	+			100 µg	GU9720	12
Propoxyphene	Ms IgG1	M01101621			+		+								1 mg	U71720	11
Propoxyphene	Rb	Pab										+			1 mg	U72100	11
Prostacyclin Receptor	Rb	Pab		+									+		50 µl	FT4480	14-22
Prostaglandin D2 Receptor	Rb	Pab		+									+		50 µl	FT4620	14-22
Prostaglandin D2 Receptor	Rb	Pab		+									+		50 µl	FT4920	14-22
Prostaglandin D2 Receptor	Rb	Pab		+									+		50 µl	FT6230	14-22
Prostaglandin D2 Receptor	Rb	Pab		+									+		50 µl	BC7400	14-22
Prostaglandin E Receptor 1	Rb	Pab			+	+					+	+			100 µg	H80370	9-22
Prostaglandin E Receptor 2	Rb	Pab			(+)	(+)	+	(Rb)			+	+			100 µg	I08040	9-22
Prostaglandin E Receptor 2	Rb	Pab			+			(Rb)			+	+			100 µg	D92710	9-22
Prostaglandin E Receptor 3	Rb	Pab				+					+	+			100 µg	H83100	9-22

Research Area Code

- | | | | | |
|---|--|---|---|--|
| 1 Allergens | 6 Cardiac Markers and related molecules | 11 Drugs and resistance | 16 Lipides/Apolipo/Lipoproteins | 20 Neuroscience |
| 2 Anglo/Histogenesis | 7 CD Markers | 12 Enzymes & enzymes inhibitors | 17 Membrane channels and transport proteins | 21 Post translational modifications |
| 3 Apoptosis/cell cycle | 8 Cell adhesion | 13 Hematopoietic markers | 18 Metabolism/Energy pathways | 22 Signal transduction/Stress response |
| 4 Blood and serum proteins | 9 Cytokine/Chemokine/Growth factors | 14 Hormones/Steroids | 19 Miscellaneous | 23 Structural proteins |
| 5 Cancer, Hypoxia and related molecules | 10 DNA Replication/Transcription/Repairs | 15 Infectious agents related molecules & resistance | | 24 Tags and Markers |

Primary Antibodies & Ags

Alphabetical Listing

Name	Host - Isotype	Clone	Species Reactivity				Application						Size	Cat.#	Research Area	
			Hu	Ms	Rt	Other	WB	IHC	ICC	EL	FC	IP				Other
Prostaglandin E Receptor 3	Rb	Pab	+		(+)		+	+						100 µg	H86730	9-22
Prostaglandin E Receptor 4	Rb	Pab	+	(+)	(+)		+	+						100 µg	I03370	9-22
Prostaglandin E Receptor 4	Rb	Pab	+	(+)	(+)	(+)	+	+						100 µg	H82490	9-22
Prostaglandin E Receptor EP2	Rb	Pab	+					+						50 µl		14-22
Prostaglandin E Receptor EP2	Rb	Pab	+	+	+			+						50 µl	FT6650	14-22
Prostaglandin E Receptor EP4	Rb	Pab	+					+						50 µl	FT3830	14-22
Prostaglandin E Receptor EP4	Rb	Pab	+					+						50 µl	FT3820	14-22
Prostaglandin E Receptor EP4	Rb	Pab	+	+	+			+						50 µl	FT3810	14-22
Prostaglandin E2 Receptor EP3	Rb	Pab	+					+						50 µl	FT6660	14-22
Prostaglandin F2 alpha Receptor	Rb	Pab			+			+	+					100 µg	GU9730	9-22
Prostaglandin F2 alpha Receptor	Rb	Pab	+	+	+			+						50 µl	FS8890	14-22
Prostaglandin F2 alpha Receptor	Rb	Pab	+	+	+			+						50 µl	FS8880	14-22
Prostaglandin F2 alpha Receptor	Rb	Pab	+	+	+			+						50 µl	FT5670	14-22
Prostaglandin Transporter	Rb	Pab			+			+	+					100 µg	I27520	9-17
Prostate Acid Phosphatase	Ms IgG2a	502			+									1 mg	N93770	5
Prostate Apoptosis Response-4	Rb	Pab	+	+	+			+	+					500 µl	GH5595	3
Prostate Mucin Antigen	Ms IgG1	BDI134	+					+					IF	500 µg	GG2790	5
Prostate Mucin Antigen	Ms IgG3	BDI183	+					+					IF	500 µg	GG2800	5
Prostate Secretory Protein	Ms IgG1	BDI248	+					+	+					500 µg	GG3120	5
Prostate Secretory Protein	Ms IgG1	BDI841	+					+	+					500 µg	GG3130	5
Prostate Specific Acid Phosphatase	Ms IgG1	PASE/4LJ	+		+	Dg,Rb		+					IF	500 µl	N82760	12-5
Prostate Specific Acid Phosphatase	Rb	Pab	+					+						500 µl	N82820	12-5
Prostate Specific Antigen	Rb	Pab	+					+	+					1 mg	GU9750	5
Prostate Specific Antigen	Ms	Mab	+					+	+					1 mg	GU9740	5
Prostate Specific Antigen	Ms IgG1	M612152	+						+					1 mg	P47050	5
Prostate Specific Antigen	Gt	Pab	+						+					1 ml	P60490	5
Prostate Specific Antigen	Gt	Pab	+						+					1 mg	P61950	5
Prostate Specific Antigen	Rb	Pab	+											1 ml	P60480	5
Prostate Specific Antigen	Gt	Pab	+											1 mg	O07190	5
Prostate Specific Antigen	Gt	Pab	+											1 ml	586380	5
Prostate Specific Antigen	Rb	Pab	+						+					1 ml	665890	5
Prostate Specific Antigen	Ms IgG1	131-14234	+					+						1 mg	N93780	5
Prostate Specific Antigen	Ms IgG1	PA05	+					+						500 µl	Q38630	5
Prostate Specific Antigen	Ms IgG1	cocktail	+					+						500 µl	Q38680	5
Prostate Specific Antigen	Ms IgG1	ER-PR8	+					+	+					500 µl	N82600	5
Prostate Specific Antigen	Rb	Pab	+					+						500 µl	N82730	5
Prostate Specific Antigen -HRP	Ms	M605109											+	500 µg	P42240	5
Prostate Specific Antigen, free	Ms IgG1	M612165	+										+	1 mg	P47100	5
Prostate Specific Antigen, free	Ms IgG1	PS1	+										+	1 mg	S33510	5
Prostate Specific Antigen, free	Ms IgG2a	8A6	+										+	1 mg	S33500	5
Prostate Specific Antigen, free	Ms IgG2a	981	+										COA	1 mg	N87140	5
Prostate Specific Antigen, total	Rb	Pab	+											1 mg	858592	5
Prostate Specific Antigen, total	Ms IgG1	10	+										COA	1 mg	N87110	5
Prostate Specific Antigen, total	Ms IgG1	PS6	+										+	1 mg	U67970	5
Prostate Specific Antigen, total	Ms IgG2a	2H9	+										+	1 mg	S33540	5
Prostate Specific Antigen, total	Ms IgG1	PS2	+										+	1 mg	S33530	5
Prostate Specific Antigen, total	Ms IgG2a	5A6	+										+	1 mg	S33520	5
Prostate Specific Antigen, total	Ms IgG1	5G6	+										+	1 mg	U67960	5
Prostate Specific Antigen, total	Ms IgG1	017	+											1 mg	N87060	5
Prostate Specific Antigen, total	Ms IgG2a	140	+											1 mg	N87070	5
Prostate Specific Antigen, total	Ms IgG1	906	+										COA	1 mg	N87100	5
Prostate Specific Antigen, total -HRP	Ms IgG1	PS2	+											1 mg	BM0790	5
Prostate Specific Antigen, total -HRP	Ms IgG2a	5A6	+										+	1 mg	GG3100	5
Prostate Specific Antigen, total -HRP	Ms IgG1	906	+										+	1 ml	GG3110	5
Prostate Specific Antigen/ACT complex	Ms IgG1	M612151	+										COA	1 mg	P47110	5

Species legend : Bd : Bird, Bv : Bovine, Ck : Chicken or Hen, Ct : Feline, Dg : Canine, Dr : Drosophila, Eq : Equine, F : Fish, Fr : Frog, Ft : Ferret, GP : Guinea Pig, Gt : Goat, Hm : Hamster, Hrs : Horse, Hu : Human, Ko : Kangaroo, M : Mammalian, Mi : Mink, Mk : Monkey, Ms : Mouse, Ne : Nematode, Op : Opossum, Pl : plant, Ql : Quail, Rb : Rabbit, Rt : Rat, Sh : Sheep, Sw : Porcine, Sy Hm : Syrian Hamster, Xe : Xenopus, Ye : Yeast

Size : Size indicated in bold means several sizes and formats are available (sample size or bigger size, unpurified neat serum, without azide or BSA, positive control...) : contact us for more detail

Application legend : Bk : Blocking, CD : Cell detection, Ch : ChIP, COA : ELISA capture, Db : Dot Blot, DD : Double diffusion, EL : ELISA detection, EM : Electron Microscopy, FCM : Flow Cytometry, FIA : FluoroImmunoAssay, GS : Gel (super)shift, HA : Hemagglutination/Latex agglutination, ICC : ImmunoCytoChemistry, IEP : Immunoelectrophoresis, IF : Immunofluorescence, IHC : ImmunoHistoChemistry, IP : Immunoprecipitation/Immunopurification, ISH : In Situ Hybridization, KA : Kinase assay, LF : Lateral flow, Neph : Nephelometry, Neut : Neutralizing, RIA : RadioImmunoassay, RID : Radial Immunodiffusion, SB : Southern Blot, TIA : Turbidimetry

Name : Prefixes as 'alpha', 'D1-', 'Pro-',... are not considered for the alphanumerical sorting, and often included after the main name.

(+): Expected species cross-reactivities based on immunogen sequence homology _ Expected application suitability.

Primary Antibodies & Ags

Alphabetical Listing

Name	Host - Isotype	Clone	Species				Reactivity							Application	Size	Cat.#	Research Area	
			Hu	Ms	Rt	Other	WB	IHC	EL	FC	IP	Other						
Prostate Specific Membrane Antigen	Ms IgG2b	Y/PSMA1	+												IF	500 µg	S33970	5
Prostate-Specific GPCR	Rb	Pab	+													50 µl	BC8870	20-22
Prostate-Specific GPCR	Rb	Pab	+													50 µl	BC8871	20-22
Prostatic Acid Phosphatase	Ms IgG1	M01010921	+													1 mg	U71730	5
Prostatic Acid Phosphatase	Gt	Pab	+													1 ml	P60520	4-5
Prostatic Acid Phosphatase	Rb	Pab														1 ml	P60510	4-5
Prostatic Acid Phosphatase	Ms IgG1	501	+													1 mg	N93730	5
Prostatic Acid Phosphatase	Ms IgG1	505	+													1 mg	N93750	5
Prostatic Acid Phosphatase	Ms IgG1	503	+													1 mg	N93760	5
Prostein	Rb	Pab	+													100 µg	AW7810	5
Prostein, C-Term & N-Term	Rb	Pab	+													100 µg	Q64320	5
Proteasome 26S, p27 subunit	Ms IgG1	P27(26S-104)	+													5 ml	GG0880	18-23
Proteasome 26S, p32 subunit	Ms IgG1	P32(26S-161)	+													5 ml	GG0890	18-23
Protein A	Gt	Pab														1 ml	P60530	19
Protein A	Ck															1 mg	P60540	19
Protein A	Rb	Pab	+	+												50 µl	FT1670	22
Protein A	Rb	Pab	+	+												50 µl	FT1650	22
Protein A	Rb	Pab	+	+												50 µl	FT1660	22
Protein A	Ck	Pab														1 mg	GG0060	22
Protein C	Hrs	Pab	+													1 mg	O24870	4
Protein C	Gt	Pab	+													1 mg	O24880	4
Protein C	Ms IgG2b	BDI540	+													500 µg	O20880	4
Protein G	Ck	Pab														1 mg	GG0070	22
Protein G	Rb	Pab	+													50 mg	N97380	22
Protein G	Rb	Pab														2 ml	N88600	22
Protein G -FITC	Rb	Pab														20 mg	N97360	22
Protein G -HRP	Rb	Pab														20 mg	O08160	22
Protein Gene Product 9.5	Ms IgG2b	10A1	+													500 µl	V03620	20
Protein Gene Product 9.5	Rb	Pab	+				Bv									500 µl	V15380	20
Protein Kinase C	Ms IgG2a	MC5	+	+	+		Bv									500 µl	S40510	22
Protein Kinase Cγ	Ms IgG1	M410285	+	+	+											100 µg	P47120	22
Protein Kinase Type II	Ms IgG2a	RS30	+													1 mg	O09790	3-22
Protein Phosphatase MGC1136	Rb	Pab	+	+												50 µl	FT5750	21-12
Protein Phosphatase MGC1136	Rb	Pab	+	+												50 µl	FT5740	21-12
Protein S	Gt	Pab	+													1 mg	O24890	4
Protein Tyrosine Phosphatase alpha	Rb	Pab	+	+	+											50 µl	FT5760	21-12
Protein Tyrosine Phosphatase alpha	Rb	Pab	+	+	+											50 µl	FT5770	21-12
Protein Tyrosine Phosphatase epsilon	Rb	Pab	+	+	+											50 µl	FT5800	21-12
Protein Tyrosine Phosphatase epsilon	Rb	Pab	+	+	+											50 µl	FT5780	21-12
Protein Tyrosine Phosphatase epsilon	Rb	Pab	+													50 µl	FT5790	21-12
Protein Z	Sh	Pab	+													RID,DD+ 1 ml	O05200	4
Proteinase 3	Ms IgG2a	M01102819	+													1 mg	U71750	12
Proteinase Inhibitor 9	Ms IgG1	PI9-17	+													1 ml	GG3090	12
Proteinase-Activated Receptor 2	Rb	Pab	+													50 µl	BC3500	22-21-12
Proteinase-Activated Receptor 2	Rb	Pab	+	+	+											50 µl	FT2660	22-21-12
Proteinase-Activated Receptor 3	Rb	Pab	+													50 µl	FT2730	22-21-12
Proteinase-Activated Receptor 4	Rb	Pab	+													50 µl	FS9520	22-21-12
Proteinase-Activated Receptor 4	Rb	Pab	+	+												50 µl	FS9510	22-21-12
Proteinase-Activated Receptor 4	Rb	Pab	+	+												50 µl	FS9500	22-21-12
Proteinase-Activated Receptor 4	Rb	Pab	+	+	+											50 µl	FS9490	22-21-12
Prothrombin	Sh	Pab	+													DD,IEP+ 1 ml	N94270	4
Prothrombin	Donkey	Pab	+													1 mg	O24900	4
Prothrombin	Sh	Pab	+													1 mg	O26600	4
Prothrombin	Sh	Pab		+												1 mg	AL8210	4
Prothrombin	Ms IgG2a	2A	+													500 µg	N91020	4

Research Area Code

- | | | | | |
|---|--|---|---|--|
| 1 Allergens | 6 Cardiac Markers and related molecules | 11 Drugs and resistance | 16 Lipides/Apolipo/Lipoproteins | 20 Neuroscience |
| 2 Anglo/Histogenesis | 7 CD Markers | 12 Enzymes & enzymes inhibitors | 17 Membrane channels and transport proteins | 21 Post translational modifications |
| 3 Apoptosis/cell cycle | 8 Cell adhesion | 13 Hematopoietic markers | 18 Metabolism/Energy pathways | 22 Signal transduction/Stress response |
| 4 Blood and serum proteins | 9 Cytokine/Chemokine/Growth factors | 14 Hormones/Steroids | 19 Miscellaneous | 23 Structural proteins |
| 5 Cancer, Hypoxia and related molecules | 10 DNA Replication/Transcription/Repairs | 15 Infectious agents related molecules & resistance | | 24 Tags and Markers |

Primary Antibodies & Ags

Alphabetical Listing

Name	Host - Isotype	Clone	Species Reactivity				Application						Size	Cat.#	Research Area		
			Hu	Ms	Rt	Other	WB	IHC	EL	FC	IP	Other					
Prothymosin alpha (101-109)	Rb	Pab	+								+			20 µl	U63570	14	
Prothymosin alpha (75-109)	Rb	Pab	+								+			20 µl	U63780	14	
PROX1, C-term	Rb	Pab	+								+			100 µg	GK6480	10-3-	
PROX1, N-term	Rb	Pab	+							+	+			100 µg	GK6470	10-3-	
Proximal sequence element 1/Ku Prot.	Ms IgG2b	N3H10	+							+				200 µg	O14500	3-22	
Proximal sequence element 1/Ku Prot.	Ms IgG1	N9C1	+							+				200 µg	O14510	3-22	
PRP19 / PSO4	Rb	Pab	+							+		+		100 µg	GR5280	10	
PRP19 / PSO4	Rb	Pab	+							+				100 µg	GR3510	10	
PRP4, C-term	Rb	Pab	+							+	+	+		100 µg	BG5010	10-22-12	
PRP4, N-term	Rb	Pab	+							+	+			100 µg	GL3900	10-22-12	
PRPK, middle region	Rb	Pab	+	+						+	+	+		100 µg	GL7530	21-12-19	
pS2	Ms IgG1	pS2.1	+							+				500 µl	N82530	14	
pS2	Ms IgG1	GE 2	+							+		+		500 µl	N82570	14	
PSA, see Prostate Specific Antigen																	
PSA	Rb	Pab	+							+	+			500 µl	AW7822	5	
PSCA	Rb	Pab	+							+				500 µl	GH5660	5	
PSDR1	Rb	Pab	+							+	+			100 µg	Q64310	5	
PSDR1	Rb	Pab	+							+				100 µg	AW7830	5	
PSEN1, C-term	Rb	Pab	+							+	+			100 µg	GL1380	22-20	
PSEN2, N-term	Rb	Pab	+							+	+			100 µg	GL1390	22-20	
Pseudomonas aeruginosa	GP	Pab									+		HA	3 mg	Q43790	15	
Pseudomonas aeruginosa	GP	Pab									+		HA	1 ml	N93790	15	
Pseudomonas mallei	Ms IgG1	M0232521								+	+			1 mg	U71710	15	
Pseudomonas mallei	Ms IgG1	3D11								+	+			1 mg	O03990	15	
PSKH1, N-term	Rb	Pab	+	+						+	+	+		100 µg	GL2970	22-21-12	
PSKH2, middle region	Rb	Pab	+	+						+	+	+		100 µg	GL2980	22-21-12	
PSMD4, C-term	Rb	Pab	+							+	+	+		100 µg	GK6840	18-21-12	
PSN1, C-term	Rb	Pab	+							+				100 µg	GL1790	22-20	
PSN1/2	Rb	Pab	+							+				100 µg	GL1800	22-20	
PSN2, C-term	Rb	Pab	+							+				100 µg	GL1820	22-20	
PSN2/1, C-term	Rb	Pab	+							+				100 µg	GL1810	22-20	
PSO4, see PRP19																	
PTEN	Sh	Pab	+							+				250 µg	P60580	5	
PTEN	Rb	Pab	+							+				500 µl	N82882	5	
PTEN	Ms IgG2a	10P01	+							-		+		500 µl	N82850	5	
PTEN	Ms IgG1	10P03	+	+						+			+	IF	500 µl	Q38920	5
PTEN	Ms IgM	17-A	+							+				500 µl	S40240	5	
PTEN	Rb	Pab	+	+	+					+	+	+		500 µl	N82880	5	
PTEN	Rb	Pab	+	+	+					+				500 µl	S46940	5	
PTEN	Rb	Pab	+	(+)		(Xe)				+				100 µl	GP7630	5	
PTEN	Ms IgG1	28H6	+							+				500 µl	V05120	5	
PTEN	Rb	Pab	+							+				100 µg	GR3840	22-21	
PTK6, N-term	Rb	Pab	+							+	+			100 µg	GL5080	22-12-5	
PTK7, N-term	Rb	Pab	+							+	+			100 µg	GL5090	22-12-8-5	
PTP alpha, N-term	Rb	Pab	+							+	+			100 µg	GL8700	22-21-12	
PTP beta, C-term	Rb	Pab	+							+				100 µg	GL8710	22-21-12	
PTP delta, C-term	Rb	Pab	+							+				100 µg	GL8730	22-21-12	
PTP epsilon, C-term	Rb	Pab	+							+				100 µg	GL8740	22-21-12	
PTP gamma, middle region	Rb	Pab	+							+	+			100 µg	GL8720	22-21-12	
PTP kappa, N-term	Rb	Pab	+							+				100 µg	GL8750	22-21-12	
PTP lambda, N-term	Rb	Pab	+							+				100 µg	GL8760	22-21-12	
PTP mu, N-term	Rb	Pab	+							+				100 µg	GL8770	22-21-12	
PTP rho, N-term	Rb	Pab	+							+				100 µg	GL8780	22-21-12	
PTP sigma, C-term	Rb	Pab	+							+				100 µg	GL8790	22-21-12	
PTP zeta, middle region	Rb	Pab	+							+				100 µg	GL8800	22-21-12	

Species legend : Bd : Bird, Bv : Bovine, Ck : Chicken or Hen, Ct : Feline, Dg : Canine, Dr : Drosophila, Eq : Equine, F : Fish, Fr : Frog, Ft : Ferret, GP : Guinea Pig, Gi : Goat, Hm : Hamster, Hrs : Horse, Hu : Human, Ko : Kangaroo, M : Mammalian, Mi : Mink, Mk : Monkey, Ms : Mouse, Ne : Nematode, Op : Opossum, Pl : plant, Ql : Quail, Rb : Rabbit, Rt : Rat, Sh : Sheep, Sw : Porcine, Sy Hm : Syrian Hamster, Xe : Xenopus, Ye : Yeast

Size : Size indicated in bold means several sizes and formats are available (sample size or bigger size, unpurified neat serum, without azide or BSA, positive control...) : contact us for more detail

Application legend : Bk : Blocking, CD : Cell detection, Ch : ChIP, COA : ELISA capture, Db : Dot Blot, DD : Double diffusion, EL : ELISA detection, EM : Electron Microscopy, FCM : Flow Cytometry, FIA : FluoroImmunoAssay, GS : Gel (super)shift, HA : Hemagglutination/Latex agglutination, ICC : ImmunoCytoChemistry, IEP : Immunoelectrophoresis, IF : Immunofluorescence, IHC : ImmunoHistoChemistry, IP : Immunoprecipitation/Immunopurification, ISH : In Situ Hybridization, KA : Kinase assay, LF : Lateral flow, Neph : Nephelometry, Neut : Neutralizing, RIA : RadiolImmunoassay, RID : Radial Immunodiffusion, SB : Southern Blot, TIA : Turbidimetry

Name : Prefixes as 'alpha', 'D1-', 'Pro-',... are not considered for the alphanumerical sorting, and often included after the main name.

(+) : Expected species cross-reactivities based on immunogen sequence homology _ Expected application suitability.

Primary Antibodies & Ags

Alphabetical Listing

Name	Host - Isotype	Clone	Species Reactivity				Application						Size	Cat.#	Research Area
			Hu	Ms	Rt	Other	WB	IHC	EL	FC	IP	Other			
PTP1B, C-term C324	Rb	Pab	+							+			100 µg	GL8690	22-21-12
PTPBAS, C-term	Rb	Pab	+							+			100 µg	GL8810	22-21-12
PTPD1, middle region	Rb	Pab	+							+			100 µg	GL8820	22-21-12
PTPD2, N-term	Rb	Pab	+							+			100 µg	GL8830	22-21-12
PTPH1, middle region	Rb	Pab	+							+	+		100 µg	GL8840	22-21-12
PTPIA2, N-term	Rb	Pab	+							+	+		100 µg	GL8860	22-21-12
PTPIA2beta, N-term	Rb	Pab	+							+	+		100 µg	GL8850	22-21-12
Pum2	Rb	Pab	+	+						+		+	100 µg	GR5020	22
PUMA	Rb	Pab								+			100 µg	AW7860	3
PUMA, BH3 Domain	Rb	Pab	+							+	+		100 µg	GK4550	3
PUMA-alpha	Rb	Pab	+	+	+					+	+		100 µg	GU9760	3
PUMA-alpha	Rb	Pab	+	(+)	(+)					+	+		100 µg	GU9770	3
Pumilio 1	Gt	Pab	+	+						+		+	100 µg	AL0690	22
Pumilio 1	Gt	Pab	+	(+)	(Dr)					+			100 µl	AW9480	22
Pumilio 2	Rb	Pab	+	+						+		+	100 µl	BA2480	22
Purinergic Receptor P2Y1	Rb	Pab	+	+	+					+			50 µl	FT3790	22-20
Purinergic Receptor P2Y1	Rb	Pab	+	+	+					+			50 µl	FT3730	22-20
Purinergic Receptor P2Y1	Rb	Pab	+							+			50 µl	FT3800	22-20
Purinergic Receptor P2Y5	Rb	Pab	+	+						+			50 µl	GG4960	22-20
Purinergic Receptor P2Y5	Rb	Pab	+	+						+			50 µl	GG4961	22-20
Purinergic Receptor P2Y6	Rb	Pab	+		+					+			50 µl	FT6410	22-20
Purinergic Receptor P2Y6	Rb	Pab	+	+	+					+			50 µl	FT2940	22-20
Purinergic Receptor P2Y8	Rb	Pab	+							+			50 µl	FT1960	22
Purinergic Receptor P2Y8	Rb	Pab	+							+			50 µl	FT1970	22
Purinergic Receptor P2Y8	Rb	Pab	+							+			50 µl	GG4650	22
Purinergic Receptor P2Y10	Rb	Pab	+							+			50 µl	FT6360	22-20
Purinergic Receptor P2Y10	Rb	Pab	+	+						+			50 µl	FT6350	22-20
Purinergic Receptor P2Y10	Rb	Pab	+							+			50 µl	FT6370	22-20
Purinergic Receptor P2Y11	Rb	Pab	+							+			50 µl	FT6380	22-20
Purinergic Receptor P2Y11	Rb	Pab	+							+			50 µl	FT6390	22-20
Putative Neurotransmitter Receptor	Rb	Pab	+	+						+			50 µl	FT3100	22
Putative Neurotransmitter Receptor	Rb	Pab	+	+						+			50 µl	FT3080	22
PVR (PolioVirus Receptor), see CD155															
PVR, C-term	Rb	Pab	+							+			100 µg	GL1670	22-8-17-5
PVRL1, C-term	Rb	Pab	+							+			100 µg	GL1660	8
PXF, C-term	Rb	Pab	+							+	+		100 µg	GK9130	22-21
PXF, N-term	Rb	Pab	+	+						+	+	+	100 µg	GK9120	22-21
PXR	Rb	Pab	+							+			100 µl	GS2770	22
Pyrimidinergic Receptor P2Y4	Rb	Pab	+							+			50 µl	FT4910	22-20
Pyruvate Kinase	Gt	Pab				Rb				+	+	IEP	50 mg	N91940	12
Pyruvate Kinase	Gt	Pab				Rb				+	+		2 ml	O25480	12
Pyruvate Kinase -HRP	Gt	Pab				Rb				+	+	IEP	20 mg	N98480	12

Q

A.196

QKI	Rb	Pab	+	(+)	(Xe)					+			100 µl	GP7430	19
QKI	Rb	Pab	+	(+)	(Xe)					+			100 µl	GP7440	19
QKI	Rb	Pab	+							+			100 µg	GR5010	19
QKI	Rb	Pab	+							+			100 µg	GR3830	19
Quinidine	Ms IgG1k	M310119					+						1 mg	P47130	11
Quinidine	Ms IgG1	502									+		1 ml	O11820	11
Quinidine	Ms IgG2b	501									+		1 mg	O11830	11
Quinidine	Ms IgG2b	501									+		1 ml	O11840	11
Quinidine	Ms IgG1	504									+		1 ml	O11850	11
Quinidine	Ms IgG1	502									+		1 mg	O11860	11
Quinidine	Ms IgG1	504									+		1 mg	O11870	11

Research Area Code

- | | | | | |
|---|--|---|---|--|
| 1 Allergens | 6 Cardiac Markers and related molecules | 11 Drugs and resistance | 16 Lipides/Apolipo/Lipoproteins | 20 Neuroscience |
| 2 Anglo/Histogenesis | 7 CD Markers | 12 Enzymes & enzymes inhibitors | 17 Membrane channels and transport proteins | 21 Post translational modifications |
| 3 Apoptosis/cell cycle | 8 Cell adhesion | 13 Hematopoietic markers | 18 Metabolism/Energy pathways | 22 Signal transduction/Stress response |
| 4 Blood and serum proteins | 9 Cytokine/Chemokine/Growth factors | 14 Hormones/Steroids | 19 Miscellaneous | 23 Structural proteins |
| 5 Cancer, Hypoxia and related molecules | 10 DNA Replication/Transcription/Repairs | 15 Infectious agents related molecules & resistance | | 24 Tags and Markers |